

Port Developments & Expansions

January 2024



Introduction to AD Ports Group

AD Ports Group is a vertically integrated trade enabler, providing strategic access to the UAE, one of the Middle East's fastest-growing economies, and turning Abu Dhabi into a trade hub to serve the world. The company's five business Clusters – Economic Cities & Free Zones, Ports, Maritime, Logistics and Digital – make up a resilient trade community bonded by strong partnerships which generate stable performance and consistent growth



Publicly listed on Abu Dhabi Securities Exchange since 2022



Majority owned by Government of Abu Dhabi via ADQ



Ports



Industrial Zones



Maritime



Logistics



Digital

Vertically integrated business model

S&P Global

A+ Affirmed (Outlook Stable)

FitchRatings

A+ Affirmed (Outlook Stable)

Rating underpinned by business profile and importance to Abu Dhabi



Supported by long-term contracts and partnerships

A PORTFOLIO OF INTEGRATED BUSINESSES ENABLING GLOBAL TRADE

DIGITAL

بوابة المقطع
MAGTA GATEWAY

atip
ADVANCED TRADE
INTEGRATED PLATFORM

margo
hub

TTEK
www.ttekglobal.com

Providing technologically advanced, innovative solutions for maritime, trade and logistics to aid integrated digital global trade.

ECONOMIC CITIES & FREE ZONES

مجموعة كيزاد
KEZAD GROUP

كيزاد
KEZAD

كيزاد للمجمعات
KEZAD COMMUNITIES

كيزاد لإدارة الأصول
KEZAD ASSETS
MANAGEMENT

KEZAD Group's vital infrastructure and services span 12 economic zones covering a total area of 550km² and including more than 40 staff accommodation complexes under its subsidiary KEZAD Communities.

LOGISTICS

noatum

موانئ أبوظبي للخدمات اللوجستية
AD PORTS LOGISTICS

ميكو
MICCO

Global supply chain partner of choice delivering holistic, fully-integrated, and technologically innovative logistics solutions that drive competitive value for its customers.

MARITIME

مجموعة سفين
SAFEEN GROUP

أبوظبي البحرية
ABU DHABI MARITIME

OFCO
OFFSHORE INTERNATIONAL

ديفتيك
DIVETECH

سفين انفكتس
SAFEEN INVICTUS

Global
Feeder
Shipping

Transmar

السفين
SAFEEN
SURVEY & SUBSEA

Providing maritime & port services, transshipment, feeder, offshore and onshore logistics, in addition to maritime training and regulating Abu Dhabi's waterways.

PORTS

موانئ أبوظبي
ABU DHABI PORTS

ميناء خليفة
KHALIFA PORT

ميناء زايد
ZAYED PORT

ميناء مصفح
MUSAFFAH PORT

AMP

مرافئ الفجيرة
FUJAIRAH TERMINALS

KARACHI GATEWAY TERMINAL

محطة أبوظبي للسفن السياحية
ABU DHABI CRUISE TERMINAL

شاطئ صير بني ياس للسفن السياحية
SIR BANI YAS CRUISE BEACH

مرافئ أبوظبي
ABU DHABI TERMINALS

CMA TERMINALS
KHALIFA PORT

autoterminal
KHALIFA PORT

COSCO
SHIPPING

TCI

Owner and operator of a number of ports and terminals facilitating trade and logistics, alongside cruise terminals boosting regional tourism.

OUR GROUP AT A GLANCE



30+

Ports & Terminals

30,000+

Vessels / year

9.2m

TEU capacity

550 sqkm

Industrial zones
total area

200+

Vessels operated
container, liquid and
bulk vessels

1.3m unit

Ro-Ro
managed

43,000 t

Air freight

747,000sqm

logistics
storage

1,900+

Companies across
17
sectors

104m

Digital transactions

A THREE-STAGE GROWTH STRATEGY WITH CLEAR OUTCOMES AND OBJECTIVES

01

Consolidate position in
Abu Dhabi and the UAE

03

Expand globally to
become a leading
logistics and trade
services player

02

Focused regional
expansion



**SCALE AND
GEOGRAPHIC REACH**



**FOCUSED PORTFOLIO
DIVERSIFICATION**



**VERTICAL
INTEGRATION**



**INNOVATION &
TECHNOLOGY**



PORTS CLUSTER



BUILDING CAPACITY ACROSS THE UAE

Lesser Tunb

Greater Tunb



Abu
Musa

Community Ports

- Supporting the oil and gas sector
- Serving the local communities
- Offering an effective transportation system
- Supporting the fishing industry

Zayed Port

Abu Dhabi's main port for 40 years
21 berths
5.3km² in size
143,000m² of warehousing and cold storage

Khalifa Port

One of the world's fastest growing ports
Deepwater port – 18.5m
Container, Bulk & GC & Ro-Ro terminals
Significant expansion ongoing

Fujairah Terminals

35-year concession with Port of Fujairah
Substantial investment
720,000 TEU capacity a year
vessels of up to 9,000 TEU

Nahwa (UAE)

Delma Port

Sir Bani Yas
Cruise Beach

Shahama Port

Sila Port

Mugharraḡ
Port

Al Mirfa Port

Musaffah
Port

Linked to Musaffah Channel
Draft of 8m & several quays

Catering to offshore Oil & Gas
Expansion underway

PORTS CLUSTERS INVESTMENTS - COLLABORATIONS & PARTNERSHIPS



CMA – CGM Group

- 35 Year concession
- Phase 1 will be ready in 2024
- Phase 1 quay 800m
- 1.8 Million TEU capacity.



Aqaba Development Corporation

- Establishment of a state-of-the-art cruise terminal at Marsa Zayed in Aqaba



Arabian Chemical Terminal (ACTAD)

- 30 Year concession with a Phase 1 capacity of 100,000 CBM



Egyptian Group for Multipurpose Terminals

- MOU to develop and Operate Multipurpose Terminal in Safaga Port



Global Hubs

- AED 4 Billion investment by MSC
- AED 1.1 Billion investment by COSCO



CSP Abu Dhabi Terminal

Khalifa Port

Abu Dhabi Terminals / Khalifa Port...

Abu Dhabi Terminals / مرافق ابوظبي

Khalifa Port Administration Office...

Khalifa Port

ACT CHEMICAL TERMINAL

Nass Site Office Hatch

EGA AT Power Plant Work Shop

EMAL, FABTECH Coating site office

GHANADIAH

Khatoon Restaurant / مطعم خاتون - ابوظبي

ERC EGA Al-Taweelah

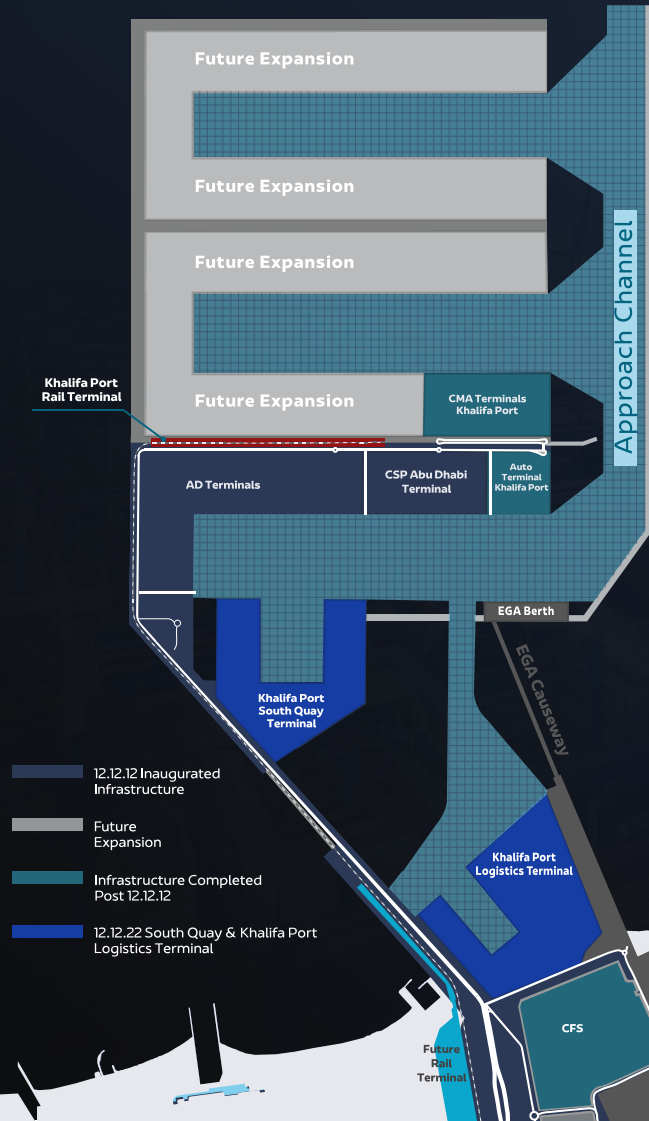
Emirates Global Aluminium HQ Building

Gulf Extrusions Abu Dhabi

Khalifa Port



KHALIFA PORT INTERGRATED DEVELOPMENT



Ranked 5th container port globally in 2022



15 m TEUs container capacity by 2030



25 m Tonnes general cargo capacity by 2024



55% Of the UAE's total industrial area



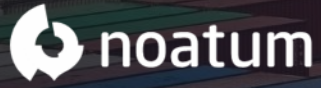
Multimodal Connectivity Air, Road, Sea and Rail

   **Khalifa Port is home to 3 of the top 5 global shipping lines**



MAJOR SHAREHOLDINGS & ACQUISITIONS

100%



70%



100%



22.32%



80%



10%



One of the region's largest holding companies with a broad portfolio of major enterprises spanning key sectors.



PORT DEVELOPMENTS & INTERNATIONAL EXPANSION



- **Terminals:** 16 Terminals in 2 countries
- **Maritime:** presence in 70 ports in 5 countries
- **Logistics:** 91 offices in 24 countries



- 4 main offices in Dubai (HQ), Singapore, Malaysia and Mumbai



- Presence in 10 ports in 6 countries

KGTL

- Karachi Gateway Terminal



200+ offices worldwide

40+ countries

9,800+ employees 30+ ports

90+ countries connections

200+ vessels owned and operated

KGTL



قطاع الموانئ
PORTS



PART OF
AD PORTS GROUP



KGTL EXPANSION



Quay Length

Additional 200m Quay Length
Total Quay length – **800m**



Addition of Equipment (Phase I)

2 Additional Advance STSs
6 Additional Advance RTGs



Deep Draft

Dredging to achieve **14.5m to 15m draft**



Terminal Capacity

Increase Terminal capacity upto **1 million TEUs**



New Turning Basin

Develop new turning basin to handle 355m LOA Vessels

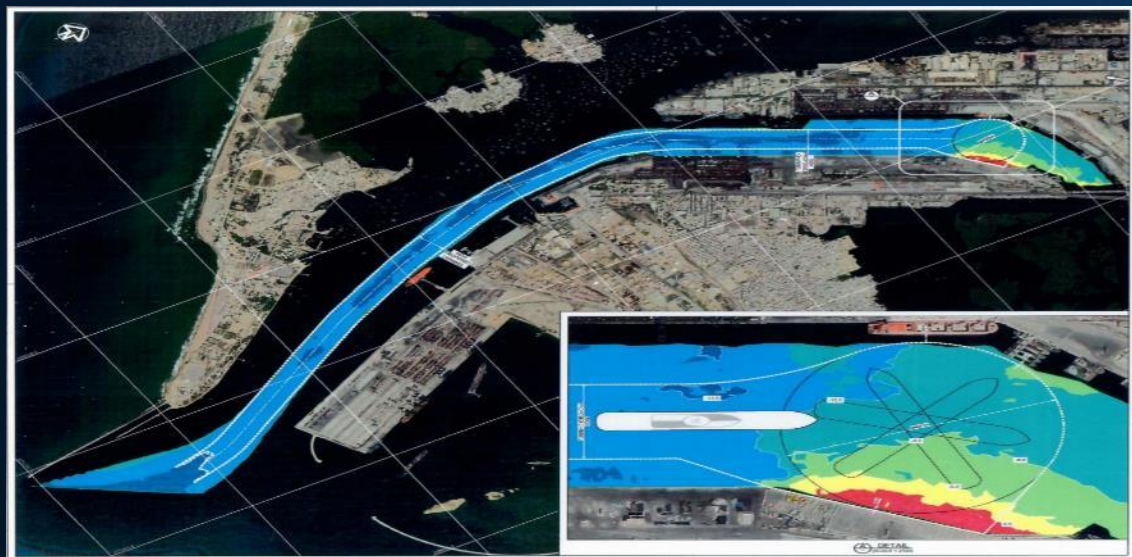
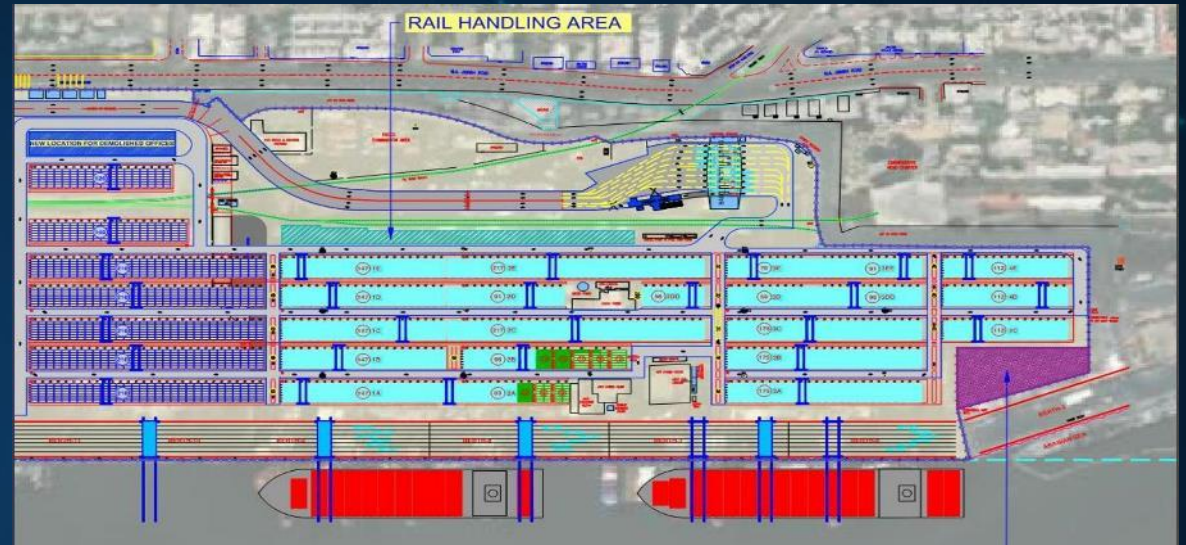
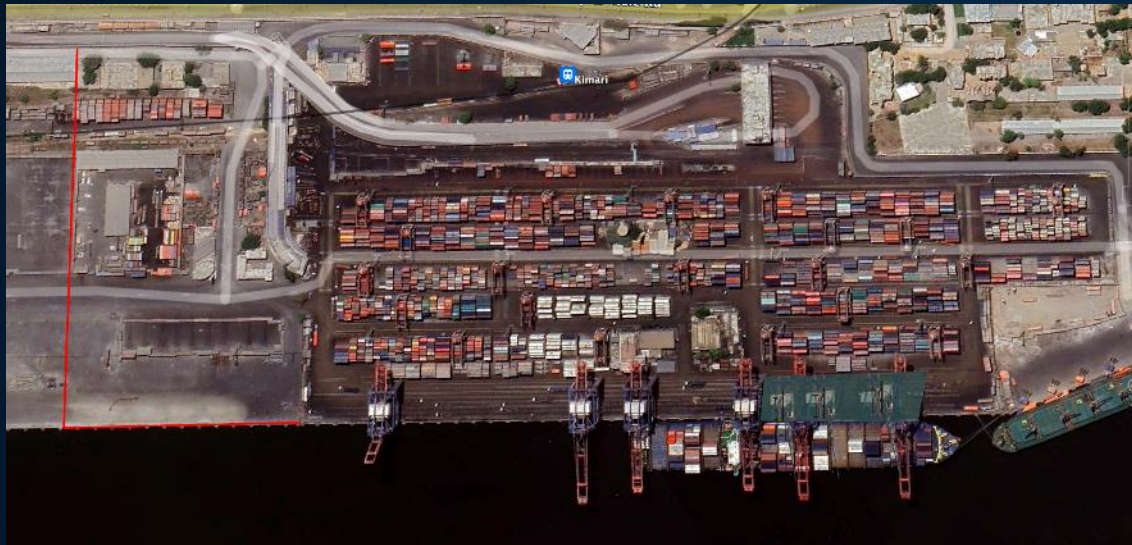


Area

Increase of Terminal supporting area by **70,000 sqm** additional.

Total terminal covered area 2.8 Hectare

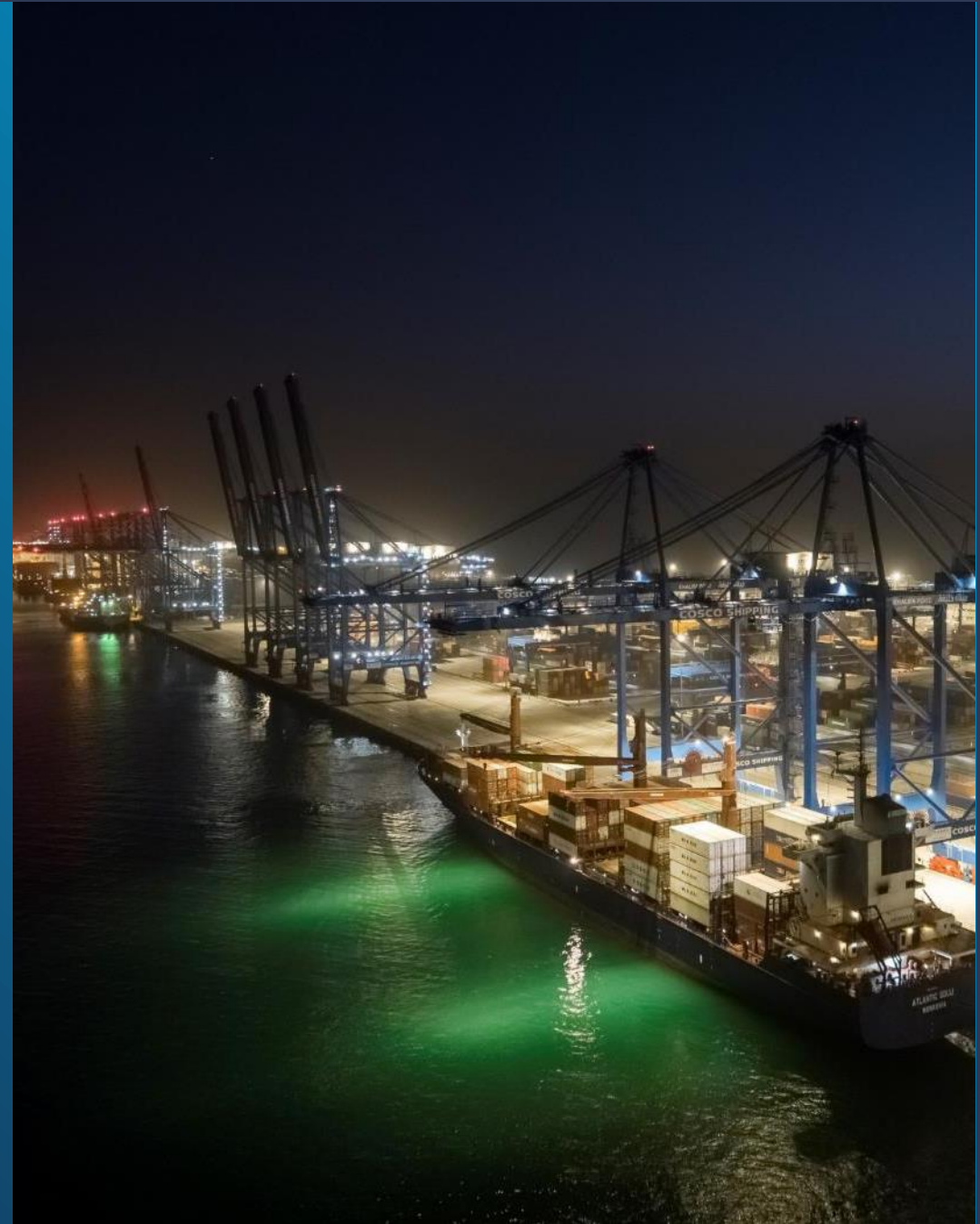
KGTL EXPANSION



ETS

The Engineering and Technical Services Unit provides technical and project management support for the engineering, construction and facility management of all built assets within AD Ports Group.

- Offer **strategic** and **cohesive** perspectives for all stakeholders
- **Enable** growth by engineering **value** and **sustainable** solutions
- **Realise** revenue by driving **safe** and **on time** delivery
- Create **value** by maintaining our assets **intelligently**



FULL LIFECYCLE PROJECT DELIVERY

In-house Expertise Across all Sectors



Marine Projects

- Dredging and reclamation
- Quay wall construction
- Marine structures and jetties
- Container and General Cargo Terminals
- Breakwaters and revetments
- Pontoons and marinas



Infrastructure Projects

- Roads and highway structures
- Utilities and services
- Power distribution
- Sewage and water treatment



Building Projects

- Industrial Buildings
- Offices
- Terminal Buildings
- Office refurbishments





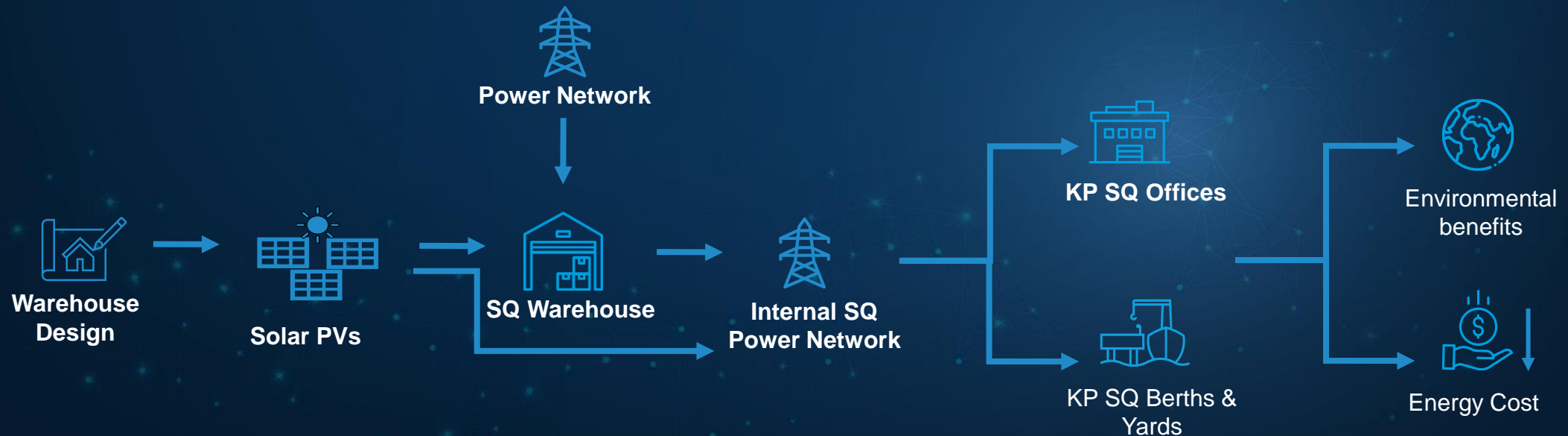
**What we
build today**

**defines our
tomorrow**

#BuildingTheTransition

NET ZERO BUILDING

A net zero building is simply a building that has no net carbon emissions during its construction and operation. Emissions are reduced and what's leftover is balanced by renewable energy or carbon offsets.





Project Highlight

Shamal Net Zero Building

Overview

Net Zero design completed for the admin building and registered with **EDGE** for certification review in 2023. The project is on track to achieve **net-zero** certification and Estidama **3-Pearl**, with the following features:

- 850 KW Renewable Energy System
- High Performance Building Envelope and Glazing
- Efficient Air Conditioning System
- Building Management System with sensors
- 11 EV Charging Stations

Awards

The Engineering and Technical Services (ETS) department won the Net Zero Building of the Year at the 2022 MENA Green Building Awards:

- ✓ AD Port Group's first net-positive energy building project
- ✓ One of the first net-positive energy buildings in the UAE
- ✓ One of the first net zero carbon projects in the MENA region

Environmental Benefits

- **31,321 Metric Tonnes** of CO2e savings over the project lifecycle
- **3,945 homes' energy use** for one year
- **517,895 tree seedlings grown** for 10 years.

These savings mainly stem from the solar PV system, sustainable materials utilized on the concrete blocks, building structures and pavements.





Biodiversity Conservation Initiated and Planned Projects

Coral Relocation Monitoring

In 2020, we successfully relocated healthy corals to the environmental breakwater near Ras Ghanada to protect them from the development footprint of Khalifa Port.
In 2021, we collaborated with a local university to monitor the relocated corals over a 2-year period. A best practice manual is due to be published for coral relocation



Eco-Mattress & Eco Sewalls

The use of ecological mattresses and eco sewalls have been deployed within our marinas to compensate for the loss of habitat and nourish marine ecosystems



Spiny-tailed Lizard Relocation

In collaboration with the Environment Agency Abu Dhabi, we have commenced a two-year relocation project for spiny-tailed lizards, which the IUCN list classifies as vulnerable due to their declining population. The lizards will be relocated to a dedicated conservation area to compensate for the loss of habitat



Mammal Migration Study

The Group is undertaking a mammal migration study to monitor fauna transiting within navigational areas, aiming to understand behavior of such species and avoid collisions



Thank you

adportsgroup.com

[@adportsgroup](https://www.instagram.com/adportsgroup)