



**STRONG PARTNERS.  
TOUGH TRUCKS.™**

**HYSTER - L'INNOVATION AU SERVICE DE LA PERFORMANCE**  
*HYSTER, INNOVATION SERVING THE PORT HANDLING PERFORMANCE*

➤ Régis DANIGO – Big Trucks Sales Manager French speaking Africa



## ► Régis DANIGO

Big Truck Manager – France & French Speaking Africa

**Office:** +33 (0)1 60 43 58 87

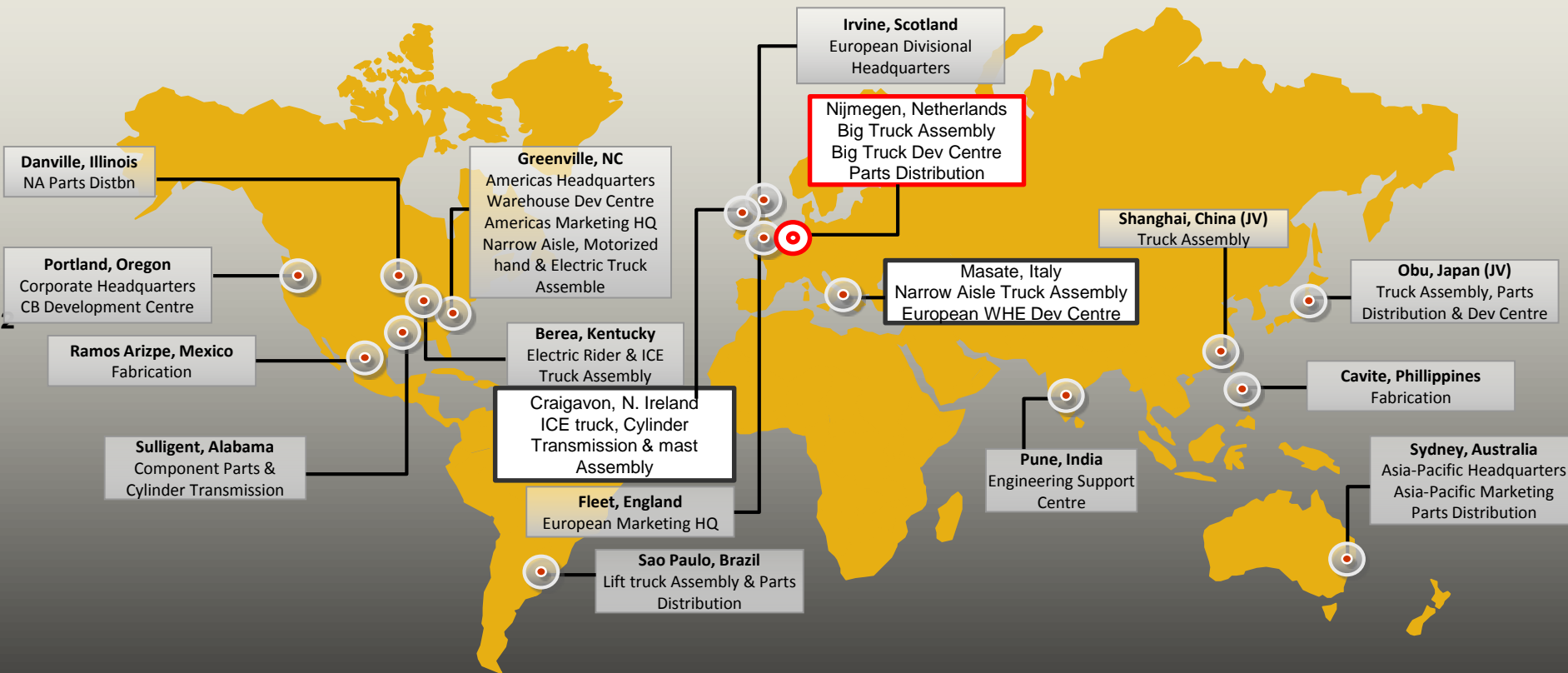
**Mobile:** +33 (0)6 37 01 63 80

**email:** [regis.danigo@hyster-yale.com](mailto:regis.danigo@hyster-yale.com)



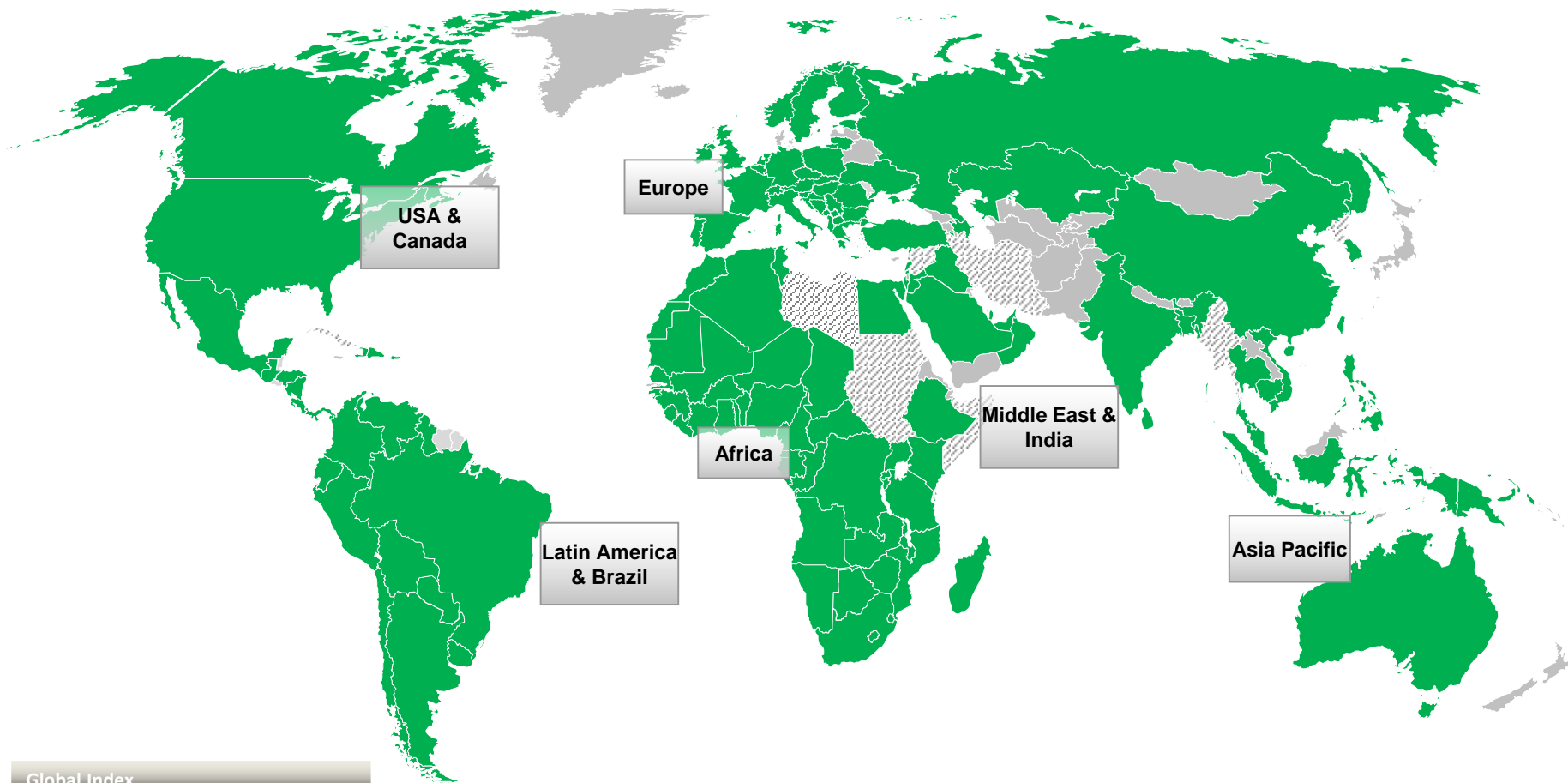
# LES USINES DANS LE MONDE

## WORLDWIDE FACTORIES



# COUVERTURE MONDIALE

GLOBAL SERVICE COVERAGE



### Global Index

Grey	Direct Coverage
Green	Dealer Coverage



# RESEAU MONDIAL HYSTER

HYSTER GLOBAL DEALER NETWORK



**+ de 700 agences à travers le monde... plus de 1,000 commerciaux... plus de 7,000 techniciens.**

***Over 700 global dealer locations... more than 1,000 application consultants... over 7,000 service technicians***



# LA GAMME HYSTER

HYSTER PRODUCT RANGE



## Electric CB



3 wheel Electric

4 wheel Electric

## ICE CB



Internal  
Combustion  
Engine

## Big Trucks



Empty Container  
Handlers

Reach Stackers

## Warehouse Equipment



Reach Trucks



Stackers



Very Narrow  
Aisle Trucks



Pallet Trucks



Order Pickers



Forklifts



Laden Container  
Handlers

# LA SOLUTION HYSTER DE MANUTENTION DE CONTAINERS

HYSTER CONTAINER HANDLING SOLUTIONS



## > Chariots porte-containers vides ou pleins

*Laden or Empty Containers handlers*

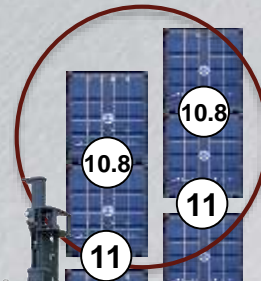
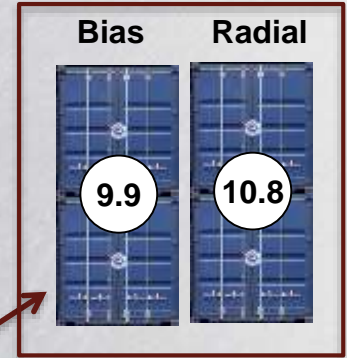


# CHARIOT UNIQUE : CAPACITE - 11 TONNES – 2 REEFERS

EC UNIQUE : 2 REEFERS – CAPACITY : 11 TONS



H11XM-ECD8



6+1	7+1	6	7
9'6"	8'6"	9'6"	8'6"





# NOUVEAU REACH STACKER HYSTER : TIER IIIA

NEW TIER III RS



TIER IIIA



TIER IV



# SPECIAL ENGINEERING

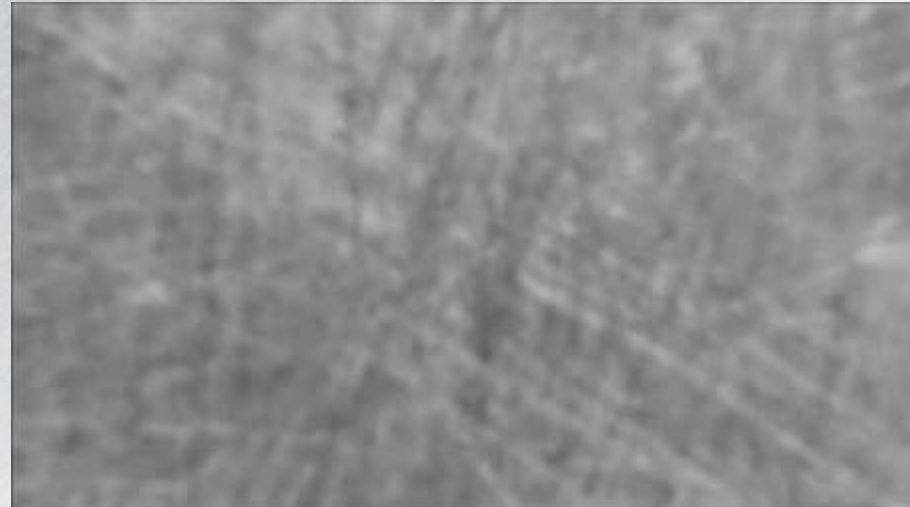
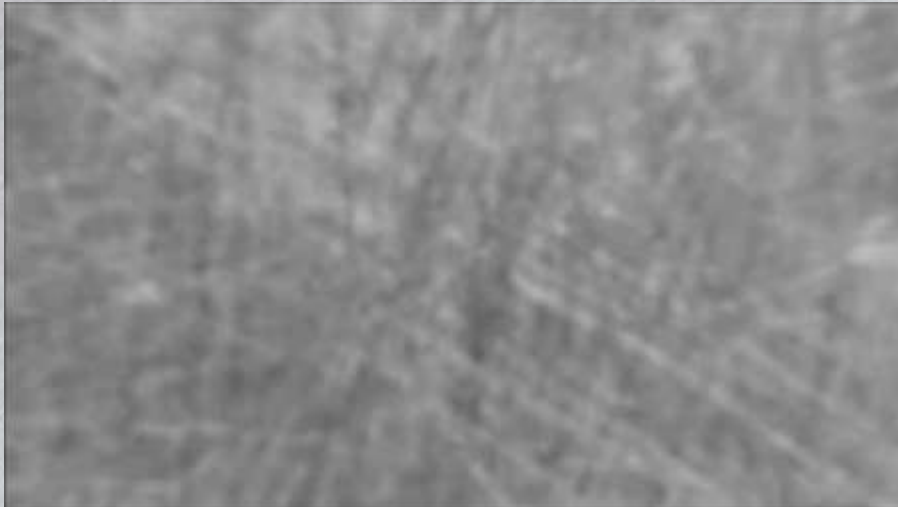


## CHALLENGE

Reduce overall truck weight  
to lower truck into ship's hull

## CHALLENGE

Perform multiple activities  
with one ReachStacker



## ➤ Reparation de containers

*Container repair*



## › Double Graissage centralisé

*Twin greasing system*



# PRODUITS SPECIAUX

## SPECIAL PRODUCTS



# SYSTÈME HYSTER TRACKER

## Caractéristiques: (*Features*)

- 1. Surveillance du chariot via le portail Web**  
*Truck monitoring via web portal*
- 2. Horamètre et suivi de l'utilisation à distance**  
*Remote hour meter/usage tracking*
- 3. Suivi des codes d'anomalie**  
*Fault code tracking*
- 4. Détection des chocs**  
*Impact sensing*
- 5. Coût d'exploitation**  
*Cost of operation*
- 6. Suivi de la maintenance préventive**  
*PM tracker*
- 7. Contrôle d'accès par opérateur (par carte)**  
*Acces control by operator (swipe card)*
- 8. Coupure en cas de chariot inoccupé et/ou de non-utilisation**  
*Unattended and/or No operation truck shutdown*





**MERCI POUR VOTRE ATTENTION**

➤ Régis DANIGO – Big Trucks Sales Manager