

MAGNA[®]
TYRES
Always.





Impact of Tyres & Current trends in the Industry.



Port & Terminal facts.

800+:

Active sea and inland ports globally.

Management's goal:

Minimize operational costs & efficient use of assets.

Equipments:

Port handling equipment are most important assets for any operators.

Operational Costs:

Spare parts & tyres are the biggest operational costs of any terminal..

Materials:

All materials at ports are handled by equipment with tyres.



Potential Developments in Tire Technology:

- **Smart Tyres:**

Tires will become more intelligent.

- **Increased durability:**

Focus more on developing long-lasting and more durable tire materials.

- **Energy Efficient:**

Low rolling resistance

- **Sustainable Materials:**

Sustainable and eco friendly materials in tire manufacturing. Bio-based materials or recycled tire components.

- **Airless Tyres:**

Airless or puncture-proof tyres for safety and reduce downtime.

- **Tread designs:**

Tread designs and compounds for various environment.



3 R of environment:

○ Reduce

We must reduce our consumption first and foremost by using specific purpose-built tires which last longer to reduce waste.

○ Reuse

When we reduce, as much as we can also add value by reusing. Quality tires always come with an option for regrooving and retreading which enhance casing life by reusing.

○ Recycle

Tyre is nonperishable causing hazards to mother nature so proper recycling to be assured at user level by recycling.



Important aspect to improve on operations.

- Proper selection.
- Maintain- Proper inflation/ Physical inspection/External debris.
- Proper maintainance- Tyre cost, Fuel cost, Wear and Tear cost- Saving on operational cost.
- Overall operation cost should be cheap, not the tyre itself.
- Periodical training.
- Purpose built, operation specific tyres for port operation- Magna Tyres.



How to eliminate this side wall crack?

- Illustrated damage is a common problem in all port operation.
- Lot of tread rubber left but still tyre can't be used as side wall weakens due to atmospheric conditions.
- For reasons and solutions - seek assistance from Team Magna.





Who are we?





Brand Values.



Flexible:

We have the power to make quick decisions and we deliver fast.



Human:

We are a family owned company which focus on tyres, but especially on the people that order and use them.



Focus:

Producing (large) tyres is our core business. It's our passion and we know all about it.



Value for money:

We offer similar quality as tier 1 brands, but for a lower price.



Why Magna Tyres?

- Four decades of experience in the compounding industry
- It's the compound that makes the difference!
- Largest 2nd-tier supplier of OTR tyres
- Partnerships with leading distributors & OEM
- European technology
- Collaborating with us, is like being one of us
- We are always on, no matter what
- Easy to do business with
- This independence and culture enables us to make quick decisions and keep our promises





Global Footprint.

Europe

- Magna Tyres Headquarters
- Magna Tyres Germany
- Magna Tyres Poland
- Magna Tyres Czech
- Industra Ltd.

North America

- Magna Tyres Canada
- Magna Tyres USA

South America

- Magna Tyres Chile

Africa

- Magna Tyres South Africa

Middle East

- Magna Tyres Middle East & Africa

Asia & Ocea

- Magna Tyres Korea
- Magna Tyres Asia
- Magna Tyres Technical Service
- Magna Tyres Singapore
- Magna Tyres India
- Fennell Tyres International





Magna Tyres Middle East & Africa.

- Magna supports more than 44 port terminals in the region.
- We are a single source for tyre with a complete port range, from sea to shore.
- **A few of our leading port operations:**



- Trusted by country owned terminals.
- Magna Tyres recommends the right tyres for specific operations and equipment.
- We offer regular inspection of tyres using modern devices and report to management.



Magna presence in global port map:





Trusted by OEM.

VOLVO **LIEBHERR** **ROKBAK** **SENEBOGEN**

KONECRANES  **KALMAR**  **TEREX**  **TERBERG**

 **FUCHS**
A TEREX BRAND

Goldhofer

HOUCON 

DUTCH LANKA TRAILERS

buisca
CARGO SOLUTIONS

KAMAG

 **VENIERI**

 **GAUSSIN**
MANUBISTIQUE

BELL

TLD
LOCAL SUPPORT, TOTAL COMMITMENT

COLMAR

 **MANTSINEN**

**BOAT
LIFT**

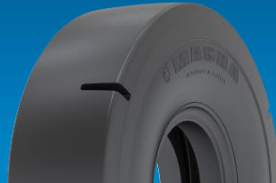


Port & Terminal



MB01 IND-3 /IND-4

16.00-25 18.00-33
21.00-25 21.00-35



MB01S IND-4

18.00-25



MB02 IND-3 /IND-4

11.00-20 18.00-25
12.00-24 18.00-33
14.00-24



MB800

5.00-8 8.25-15 300-15
6.00-9 28x9-15 12.00-20
6.50-10 250-15 12.00-20
7.00-12



MB300 IND-3

14.00-24



MB300+ IND-3

14.00-24



M-TERMINAL

280/75R22.5
310/80R22.5



M-STRADDLE IND-3

16.00R25



M-STRADDLE+ IND-3

16.00R25
480/95R25



M-STACKER IND-4

18.00-25



M-STACKER+ IND-4

18.00-25



MR800+

9.00R20 14.00R24
10.00R20 16.00R25
11.00R20 18.00R25
12.00R20 18.00R33
12.00R24



Always.