



**Ports & Infrastructure Developments
In African Ports
To Improve Service Delivery At Ports**



The Target



To Improve Service Delivery



The Basic Questions are

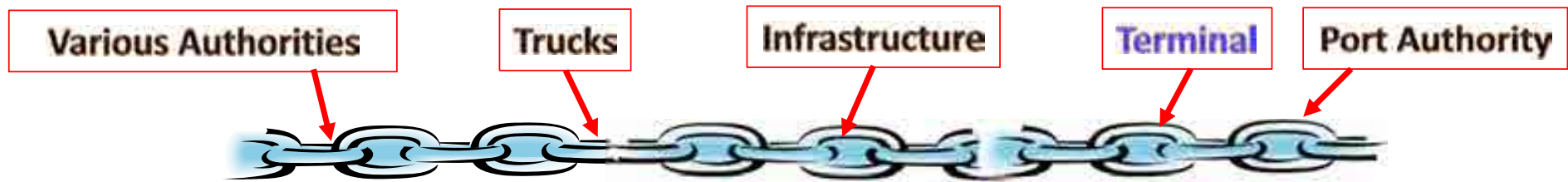
- 1. Is there any connections between Port Infrastructure Development with the main Target to Improve Service Delivery ?***
- 2. Is the function of the Port the only component to ensure an improved Service Delivery?***
- 3. In case the Infrastructure is Developed, does it ensure that The Service Delivery is Improved?***

*You can have the most sophisticated Port
With the most developed Infrastructure*

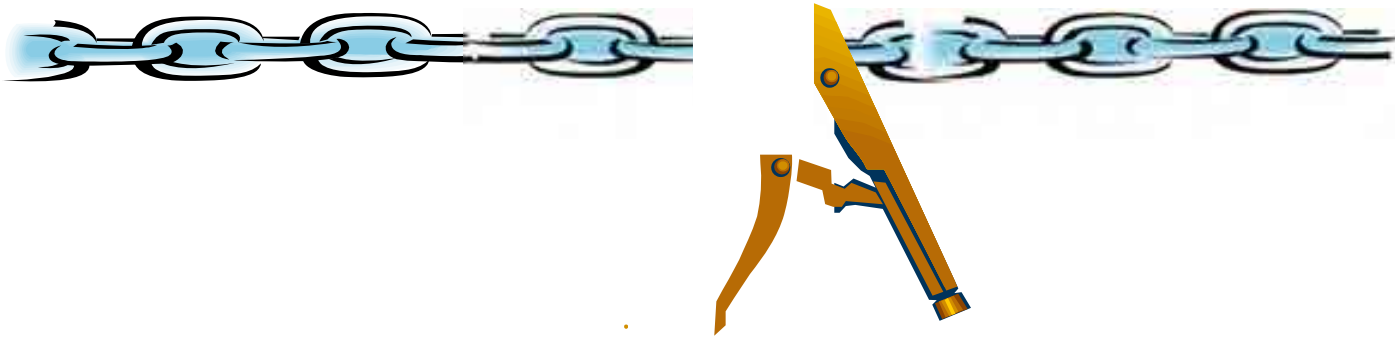


Does it Ensure an Improved Service Delivery ?

The Chain Process



The Process Chain



The Main Players in the Process

Port Authority 

Terminal 

Infrastructure 

Trucks 

Various Authorities 

Port Authority



Controlling Ports Gates



Maintain the Ports



Terminal



Sufficient Cargo Handling Equipment

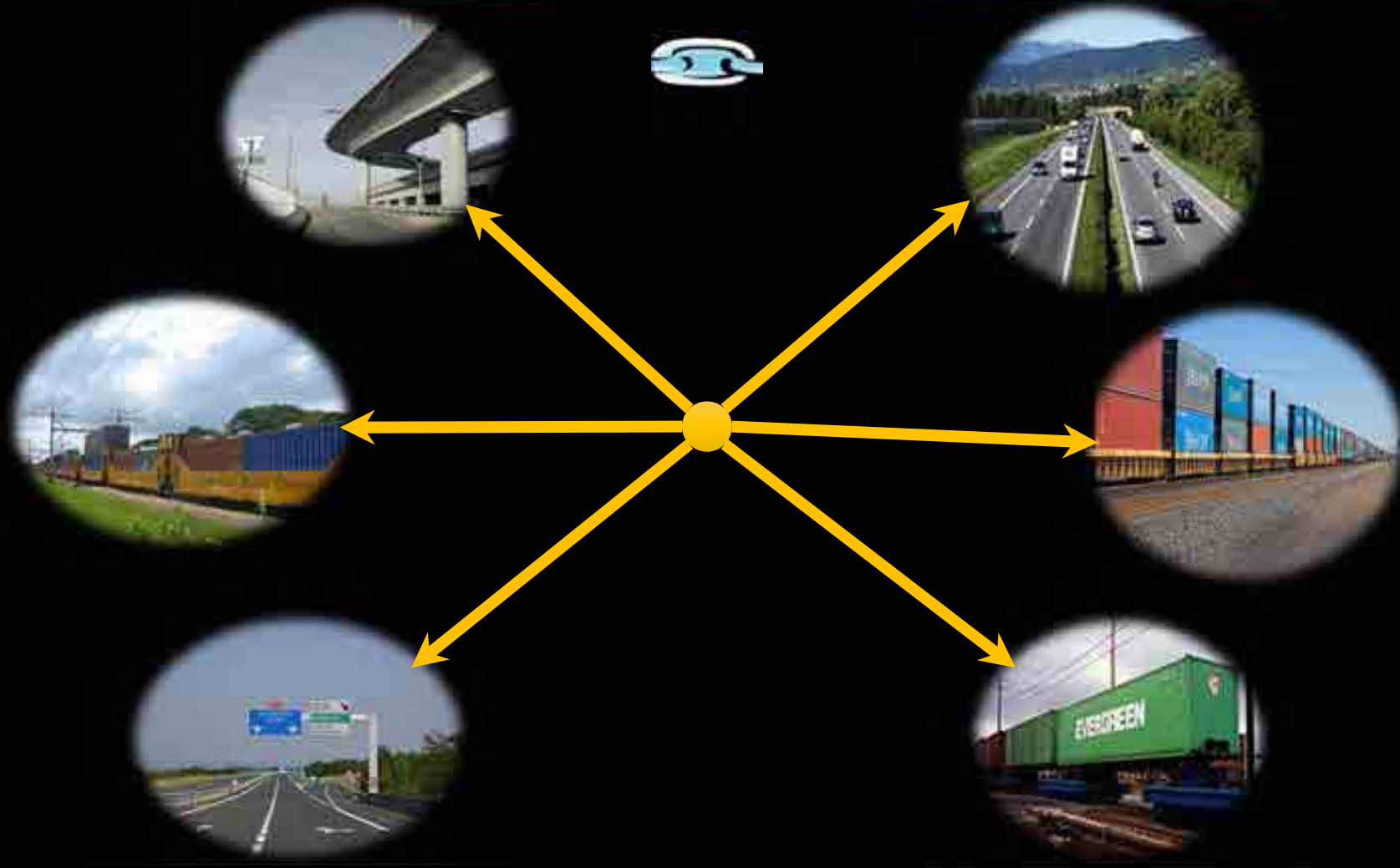
Internal Wide Roads



Modern TOS

Computerized Gate

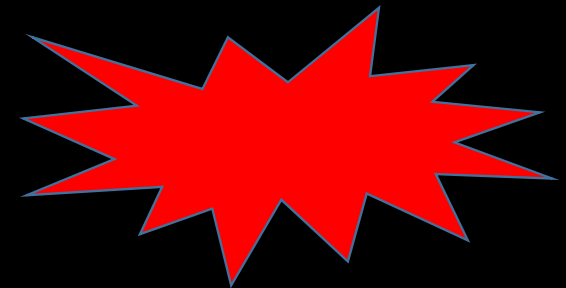
Good Infrastructure



Bad Infrastructure



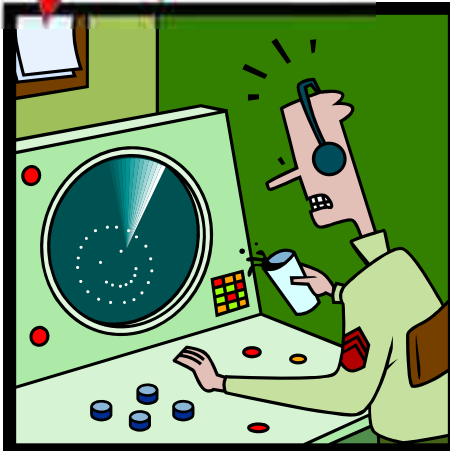
Bad Infrastructure



Trucks



Various Authorities



Should Operate 24/7

The Chain Process



***The Target can be achieved only
With full Cooperation
Of all
Partners in Process***



The Target



To Improve Service Delivery





Thanks for your Attention

CMA CGM