



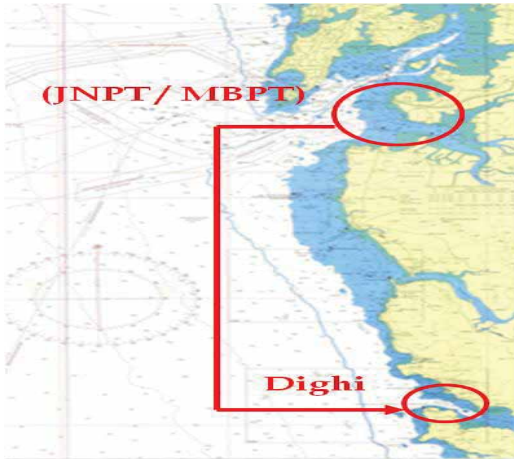
DIGHI PORT LIMITED  
We handle your cargo with care

# CONTENTS



- Port Overview
- Master Plan
- Potential Hinterland
- Customers
- Economic Importance of Dighi Port
- Dighi Port - A Pictorial Snapshot

# DIGHI PORT LIMITED – PORT OVERVIEW



## Concession & Infrastructure

- 50 year concession agreement with Maharashtra Maritime Board (MMB), Government of Maharashtra (GoM) till 2052
- All weather port
  - Phase 1 - 5 berths
  - 2 Operational ; 3 under construction
  - Draught- 12.5 meter at chart datum
  - Ability to handle 30 mn MT of cargo capacity in Phase 1
- ~1,600 acres of land located at the port

## Connectivity

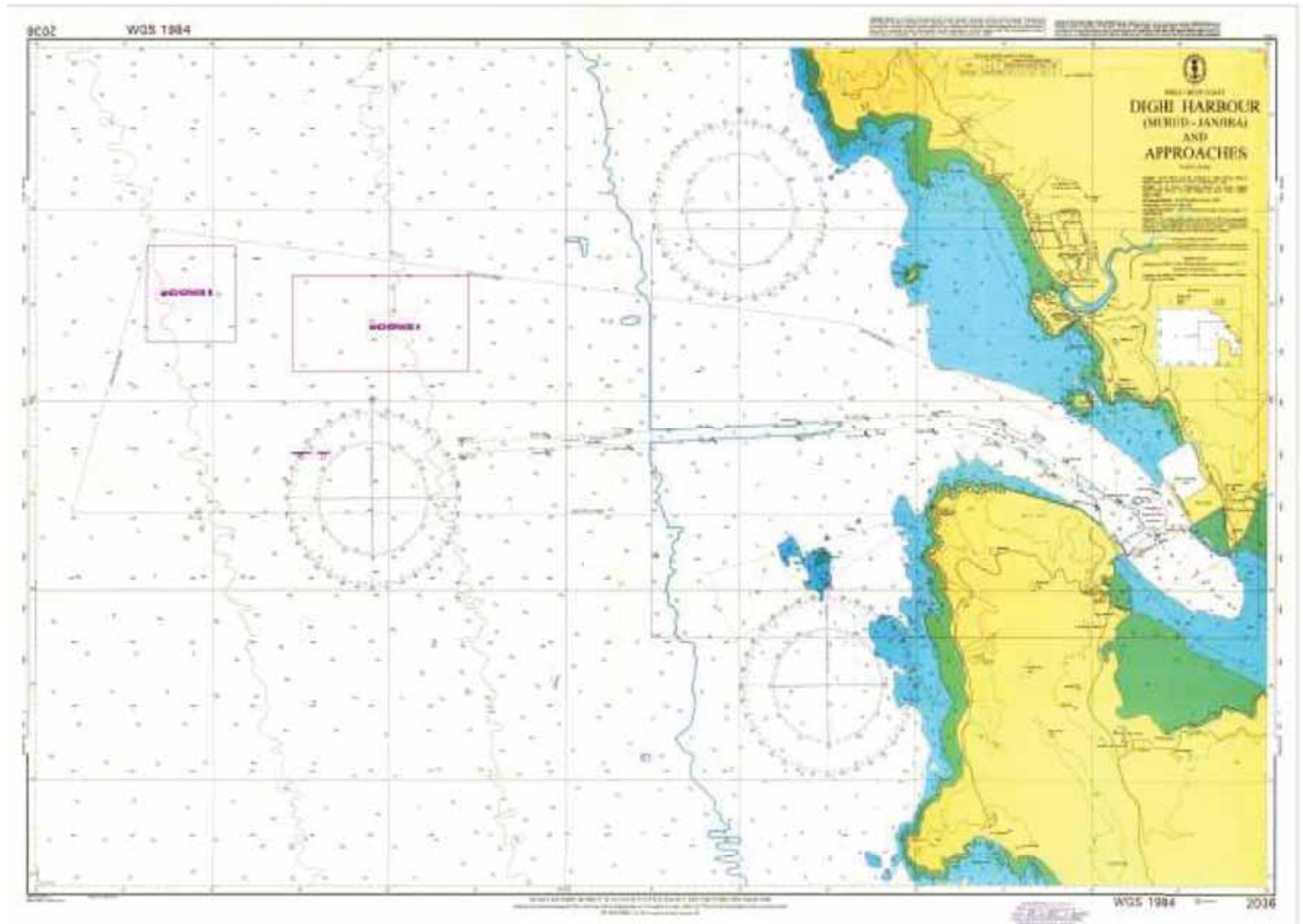
- Rail Connectivity
  - Connect to Roha 35 kms from Agardanda
  - Roha – Junction of Central & Konkan Railway
- Road – Connect to NH 17 by State Highways
  - Agardanda – SH 96 & SH 92
  - Dighi – SH 97 & SH 98
- Airport – Mumbai

## Location

- Well connected to north, north western and upper southern hinterland
- Ports in the west coast contribute to 60% of total cargo and growing @ 12 % CAGR
- ~ 42 nautical miles from ports in and around Mumbai
- Close to the main maritime trade routes linking Europe & Middle East with Asia

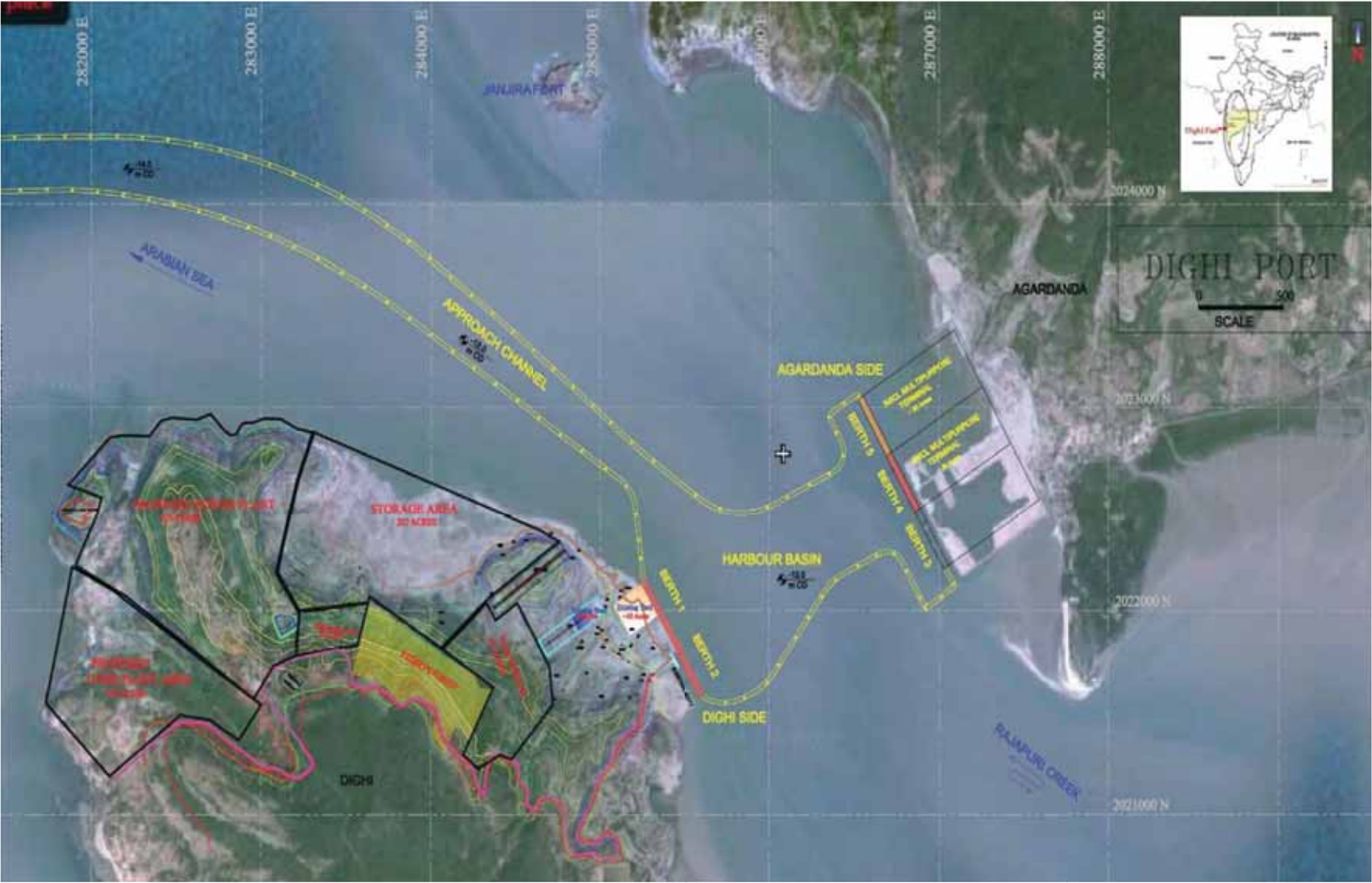
Promoted by Balaji Infra Projects Limited (BIPL)

# DIGHI PORT – NAVIGATION CHART





# MASTER PLAN – PHASE I



# CURRENT INFRASTRUCTURE PHASE - 1



**CAPACITY:** 30 MILLION TONNES

**LAND:** Total 1600 acres of land, scalable upto 3000 Acres

**DEPTH:** Uniform depth of 12.5m

**WATERFRONT:** Total sheltered waterfront of 5kms (both banks combined) with a capacity to build upto 16 berths

## SOUTH BANK

**Berths:** 2 multi-purpose berths having a total quay length of 650m. Both berths operational.

**Cranes:** Two new multi-purpose Gottwald mobile harbour cranes for handling bulk, break- bulk and container cargo

**Cargo:** Bulk, Break-Bulk, Liquid & LNG.

**Status:** The Port has commenced operations and has handled over 4 million MTs of cargo till date.

## NORTH BANK

**Berths:** Additional 3 multi-purpose berths having a total quay length of 1100m under development. Piling work for the berths in progress. All three berths will be ready by last quarter 2014

**Cargo:** Container and RO-RO Terminal & other cargoes

**Total quay length of 2kms with 1600 Acres of land**

## SIGNIFICANT MILESTONES



- 650m the longest quay length by a non – major port in Maharashtra operational
- 3 additional multi-purpose berths having a linear quay length of 1100m under construction
- 1,20,000 sq.m of custom bonded area available
- 0.5 million sq.m of stock yard available
- Part of the Delhi Mumbai Industrial Corridor (DMIC) which is being jointly developed by the Government of Japan and Indian Government
- Significant Cargo potential from DMIC & NMIZ – 230 sq kms. of development
- State Support Agreement (SSA) with the Central Government signed



## SIGNIFICANT MILESTONES – contd.



- Roads connecting port to National Highway 17 widened and fully operational
- Rail Vikas Nigam Limited (RVNL) is the strategic partner and holds 26% in the Project SPV for development of the rail project
- The only port in Maharashtra other than Dabhol with all permissions in place for setting up an LNG Terminal
- Only port in Maharashtra which is a part of the Delhi Mumbai Industrial corridor (DMIC) and National Investment & Manufacturing Zone (NIMZ)
- Dighi Port declared as part of “SMART CITIES” under DMIC Region





# Port Infrastructure – Operational



- **Waterfront**
  - 2 berths - length 650 mtrs operational
  - 3 berths under construction
- **Marine**
  - Channel length – 15kms
  - Draught in the harbour – 12.5 m at chart datum
  - Protected by Nanavali Headland – acts as natural break-water
- **Land**
  - Right to develop approximately 1,600 acres of land
  - ~ 600 acres developed; balance land available for development
  - Scope for additional cargo handling facilities, back-up infrastructure and port services
- **Common facilities**
  - Navigational and Communication Systems, Power, Fire Fighting Systems, Security, Navigational Control Tower, Bank, Customs and Security Building, Pumping Stations, Sewage.



# Bulk Facilities— Operational



- 2 Mobile harbour Cranes
  - Can handle 1000 - 1200 tonnes per hour
- Storage yards with aggregate capacity of ~ 7 Million MT
  - Yard of 2,00,000 sq meters of custom area
  - Additional storage area of 2,00,000 sq meters
  - Used for storage of Coal, Bauxite, Steel coils
- Covered warehouse admeasuring 45,000 sq meters
  - used by POSCO exclusively for storage of Steel coils
- Some of our Key Customers
  - POSCO steel
  - Bhatia Coal International
  - Ashapura Minechem
  - Farlin Commodities
  - Essar Steel
  - Uttam Galva Steel



# CURRENT INFRASTRUCTURE

## OPERATIONAL HIGHLIGHTS



- COAL:** Successfully handling regular Capesize vessel calls at Dighi Port. Largest CAPESIZE vessel handled at Port is of 153,153 DWT. Port has been able to achieve an average discharge rate of close to 1,000 MTs per hour on coal vessels by using its 2 mobile harbour Gottwald cranes.
- STEEL COILS:** The port has been efficiently handling regular shipments of Steel Coils being brought on vessels of approximately 50,000 DWT . An average discharge rate of 27 -28 coils per hour is being achieved.
- BAUXITE:** The port has been regularly handling export of Bauxite on 75,000 DWT vessels.
- FERTILIZER:** The port has presently handled Fertilizer (MOP).



# EXPANSION PLANS PHASE – II & III

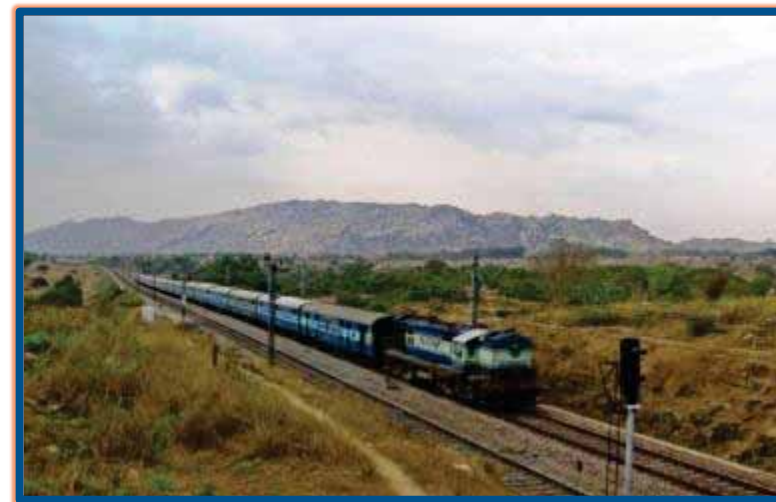


- **Plan to build** : Additional Container, Liquid, LNG, RO-RO, & Multipurpose Berths.
- **Phase II** : Depth 16m  
Capacity – 60 million tons
- **Phase III** : Depth 20m  
Capacity – 100 million tons

**2 Kms of single linear quay length on  
each bank**





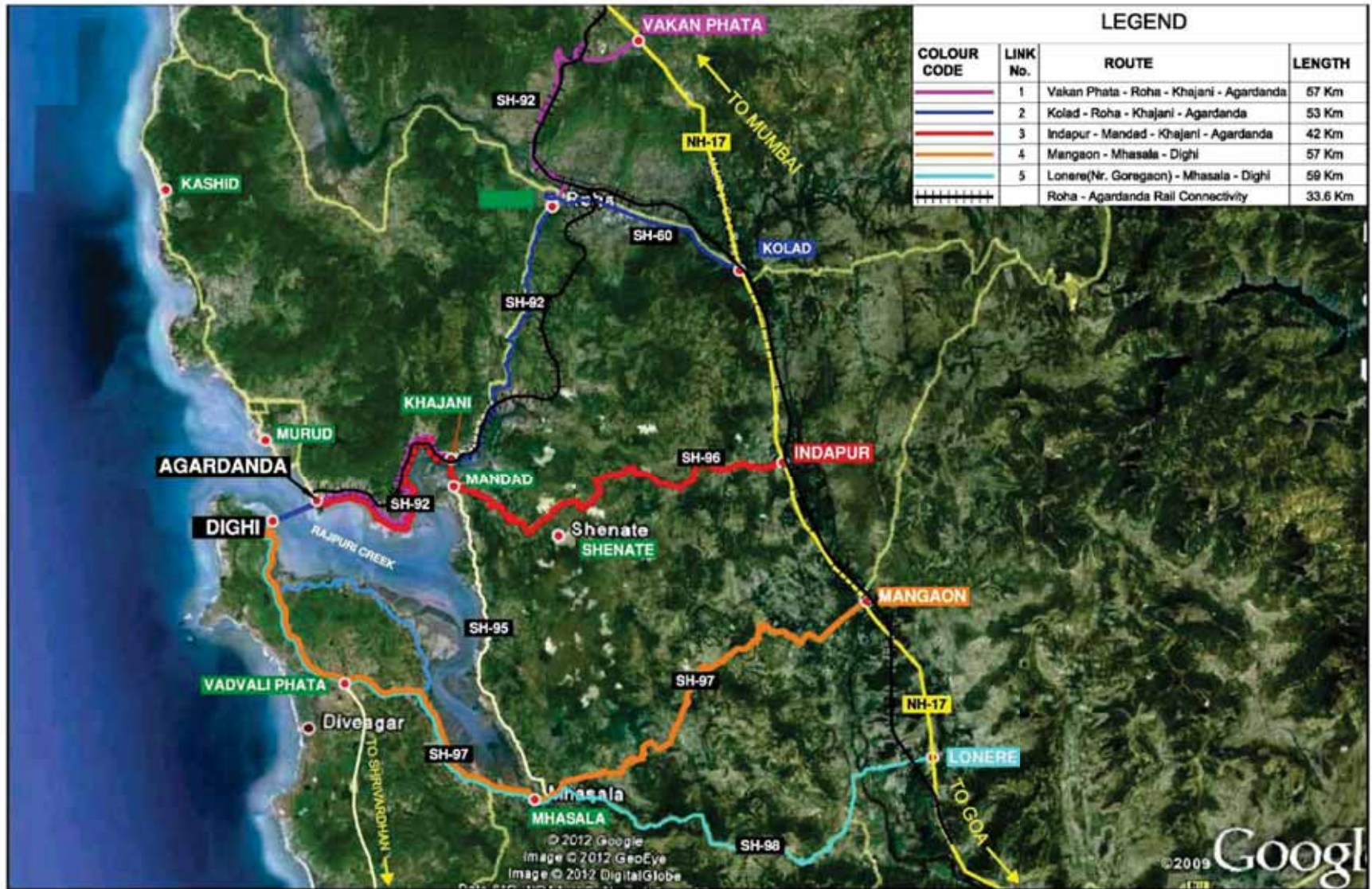


# CONNECTIVITY





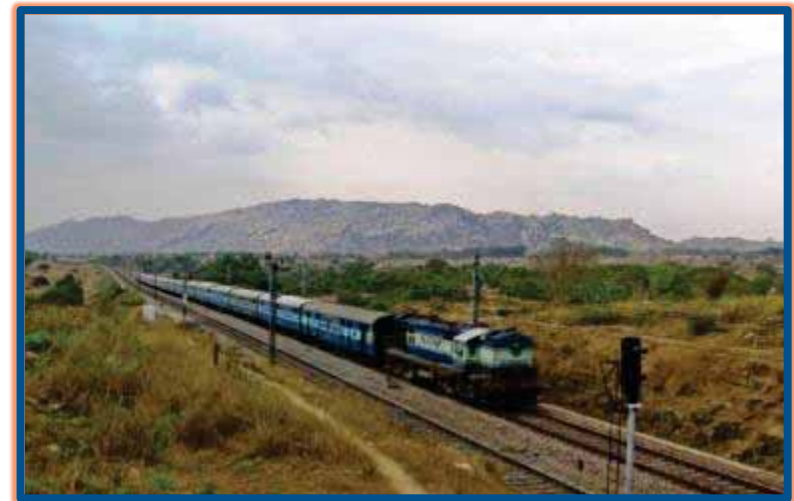
# ROAD & RAIL CONNECTIVITY



## ROAD & RAIL CONNECTIVITY – CURRENT STATUS



- MoU signed for 4 lane Road Development within Tolling rights.
- Approval received for by-pass roads to be developed on both the Banks.
- MOR approved Roha-Dighi Port Rail connectivity project.
- MoU signed with RVNL for Roha-Dighi port Rail-connectivity project.
- RVNL to hold 26% in the Project SPV.





MoU between RAIL VIKAS NIGAM LTD and DIGHI PORT LTD thereby integrating into the DFC, DMIC and Sagar Mala and carrying forward the vision of the Hon'ble Prime Minister Shri Narendra Modi.



From (L-R) Mr. Ravi Ruia, Chairman Essar Group, Shri Manoj Sinha, Minister of State for Railways, Shri Devendra Fadnavis, Chief Minister of Maharashtra, Shri Suresh Prabhu, Union Minister for Railways Mr. Vijay Kalantri, Chairman and Managing Director, Dighi Port Limited, Shri Anant Geete Hon'ble Minister(HI&PE) and Mr. Kamal M. Morarka, Chairman, Gannon Dunkerley & Co. Ltd. during The Signing MOU between Rail Vikas Nigam Ltd and Director, Dighi Port Ltd., on Roha-Dighi Port Rail connectivity, in Mumbai



Shri Satish Agnihotri , Chairman & Managing Director, Rail Vikas Nigam Ltd. and Shri Vijay Kalantri, Chairman and Managing Director, Dighi Port Ltd., during The Signing MOU between Rail Vikas Nigam Ltd and Director, Dighi Port Ltd., on Roha-Dighi Port Rail connectivity, in Mumbai. In the presence of Shri Anant Geete, Union Minister of Heavy Industries and Public Enterprises, Shri Devendra Fadnavis, Chief Minister of Maharashtra, Shri Suresh Prabhu, Union Minister for Railways and Shri Manoj Sinha, Minister of State for Railways.

## POSCO MAHARASHTRA STEEL PLANT LOCATION

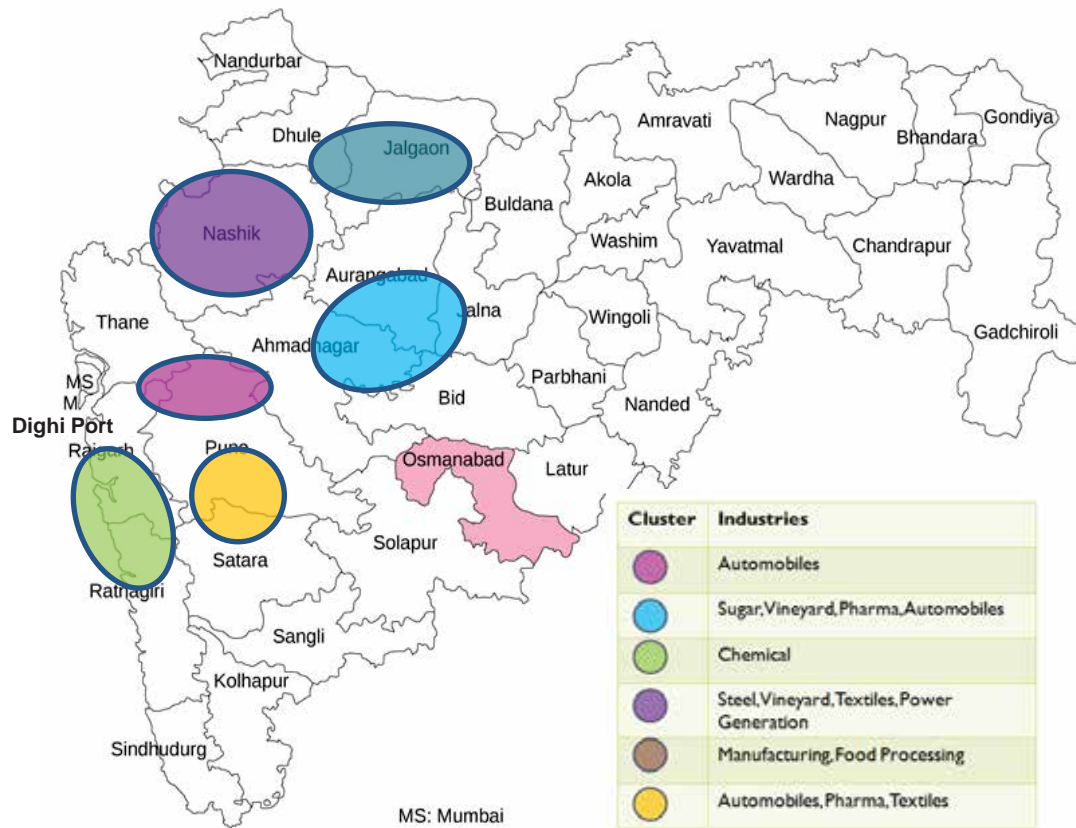


POSCO- A Global Player in the Steel Industry has Set up its Warehouse of 7,200 sq mtrs at Dighi port from where they distribute their cargo. They have made Dighi Port their hub.

# POTENTIAL HINTERLAND



# Key Hinterland



# CUSTOMERS



AGARWAL COAL CORPORATION PVT. LTD.



TRANSWORLD  
FURTI-CHEM PVT. LTD



RWE SUPPLY & TRADING

SPECIAL ECONOMIC ZONE  
(SEZ)  
&  
FREE TRADE WAREHOUSING ZONE  
(FTWZ)

# DIGHI – SEZ & FTWZ



## SPECIAL ECONOMIC ZONE (SEZ)

The port based multi-product Special Economic Zone (SEZ) is being developed at Dighi Port for the purpose of facilitating the setting up of manufacturing units, provisioning of services and other activities including processing, assembling, repairing and reconditioning.

The SEZ at Dighi will be spread over a total land bank of over 2000 acres to be developed in phases, thus making it one of the largest port based SEZ in Maharashtra.

All the requisite regulatory permissions and licenses have been acquired for the development of the SEZ.

## FREE TRADE & WAREHOUSING ZONE (FTWZ)

Creation of dedicated/general purpose world-class infrastructure for industrial units, warehousing of various products, state-of-the art equipment, transportation and handling facilities, commercial office-space, water, power, communication and connectivity, with one-stop clearance for import and export to support this integrated zone as “international trading and transshipment hub”.

**Largest investment in the port sector in the state of Maharashtra**

# ECONOMIC IMPORTANCE OF DIGHI PORT

## THE MULTIPLIER EFFECT



# Dighi Port – Smart City





**INDUSTRIES DEPARTMENT**  
Govt. of Maharashtra

**INAUGURATION**  
at 10.00 am  
At the auspicious hands of



**Dr. Vidyasagar Rao**  
Hon. Governor, Maharashtra State

**VALEDICTORY FUNCTION**  
at 3.00 pm  
At the auspicious hands of



**Shri Devendra Fadnavis**  
Hon. Chief Minister,  
Maharashtra

**Chairman**



**Shri Subhash Desai**  
Hon. Minister for Industries,  
Maharashtra

**Guest of Honour**



**Shri Pravin Pote Patil**  
Hon. Minister of State for Industries,  
Maharashtra



**MAKE IN INDIA**  
**MAKE IN MAHARASHTRA**

Good returns  
on investments  
In Destination  
Maharashtra!



The world is acknowledging the progressive initiatives being taken to make the nation a super power. Maharashtra is leading in implementing these initiatives making it the most ideal ground for investment.

**Highlights of Make in Maharashtra**

- Under the Delhi Mumbai Industrial Corridor (DMIC) Project, Shendre-Bidkin (District Aurangabad) and Dighi Industrial Area (District Raigad) will have smart cities
  - The number of licences to start an industry reduced from 75 to 25 numbers
  - Special Nodal Officer for industries investing over 100 crore.
  - The process to reclaim the un-utilised land given by Maharashtra Industrial Development Corporation (MIDC) is underway, 1075 plots have been taken into possession. These plots will be given to those needy industrialist who are ready to start their project immediately.
- The state was successful to stall the attempts of those industrialists who had announced the siting of their industry to other states.
  - The New IT Policy is in the last stage of finalisation.
  - New Electronic Policy to be introduced
  - Under the contracts signed in Hanover (Germany)
    - Volkswagen will invest Rs. 3,000 crore more in Maharashtra
    - SOS to invest Rs. 300 crore more in IT sector.

परिवर्तन

ONE DAY SEMINAR

Transform Micro, Small & Medium Enterprises for  
Transforming Maharashtra

on 9th May, 2015

In the august presence of

Shri Madhav Lal (I.A.S.)

Secretary  
(Micro, Small & Medium Enterprises)  
Government of India

Shri Apurva Chandra (I.A.S.)

Principal Secretary  
(Industries)  
Government of Maharashtra

Venue : Yashwantrao Chavan Pratishthan, Nariman Point, Mumbai - 400032.

Convener

Dr. Surendra Bagde (I.A.S.)

Secretary (Small & Medium Industries) and Development Commissioner (Industries),  
Government of Maharashtra

<https://industry.maharashtra.gov.in>

# DELHI MUMBAI INDUSTRIAL CORRIDOR (DMIC)-DIGHI NODE

## DELHI-MUMBAI INDUSTRIAL CORRIDOR AS MAHARASHTRA'S DRIVER OF GROWTH

LAUNCH OF DMIC PROJECT IN MAHARASHTRA ON 3RD MARCH, 2014 BY SHRI ANAND SHARMA, MINISTER OF COMMERCE & INDUSTRY, GOVERNMENT OF INDIA AND SHRI PRITHVIRAJ CHAVAN, CHIEF MINISTER, MAHARASHTRA.



Manufacturing Zones	Manufacturing Zones
Setting up of self-sustaining manufacturing / industrial zones such as	Setting up of self-sustaining manufacturing / industrial zones such as
<ul style="list-style-type: none"> <li>Automobiles</li> <li>Steel</li> <li>Project Equipment</li> <li>Chemical</li> <li>Agriculture</li> <li>Food Processing</li> <li>Light Manufacturing</li> <li>Heavy Manufacturing</li> </ul>	<ul style="list-style-type: none"> <li>Automobiles</li> <li>Steel</li> <li>Project Equipment</li> <li>Chemical</li> <li>Agro Parks</li> <li>Food Processing</li> <li>Light Manufacturing</li> <li>Heavy Manufacturing</li> </ul>

### DMIC PROJECTS IN MAHARASHTRA

#### PROJECTS BEING LAUNCHED:

- SHENDRA BIDKIN INDUSTRIAL CITY - AURANGABAD
- MULTI MODAL LOGISTIC PARK AT KARMAD
- EXHIBITION-CUM-CONVENTION CENTER - AURANGABAD
- WATER SUPPLY SCHEME FOR SHENDRA

#### FUTURE PROJECTS:

- DIGHI PORT INDUSTRIAL CITY
- NASHIK-SINNAR-ICATPURI INVESTMENT REGION
- MECA INDUSTRIAL PARK, DHULE
- MULTI MODAL LOGISTIC HUB

### MAHARASHTRA STATE INDUSTRIAL EMPLOYMENT (IN 2042)

**38** LAKHS

AMOUNT OF ADDITIONAL MANUFACTURING JOBS AS A RESULT OF DMIC

### MAHARASHTRA STATE INDUSTRIAL OUTPUT (IN 2042)

**20** LAKHS CRORES (INR)

AMOUNT OF ADDITIONAL INDUSTRIAL OUTPUT AS A RESULT OF DMIC

### TOP CONTRIBUTORS TO MAHARASHTRA STATE INDUSTRIAL OUTPUT (IN 2042)

TRANSPORT EQUIPMENT AND PARTS	<b>4.7x</b>	RUBBER, PLASTIC, PETROLEUM AND COAL PRODUCTS	<b>9x</b>	BASIC CHEMICAL & CHEMICAL PRODUCTS (EXCEPT PRODUCTS OF PETROLEUM & COAL)	<b>10x</b>
BASIC METAL AND ALLOY INDUSTRIES	<b>9x</b>			MACHINERY AND EQUIPMENT OTHER THAN TRANSPORT EQUIPMENT	<b>16x</b>



DEPARTMENT OF INDUSTRIAL POLICY & PROMOTION  
GOVERNMENT OF INDIA  
MINISTRY OF COMMERCE & INDUSTRY



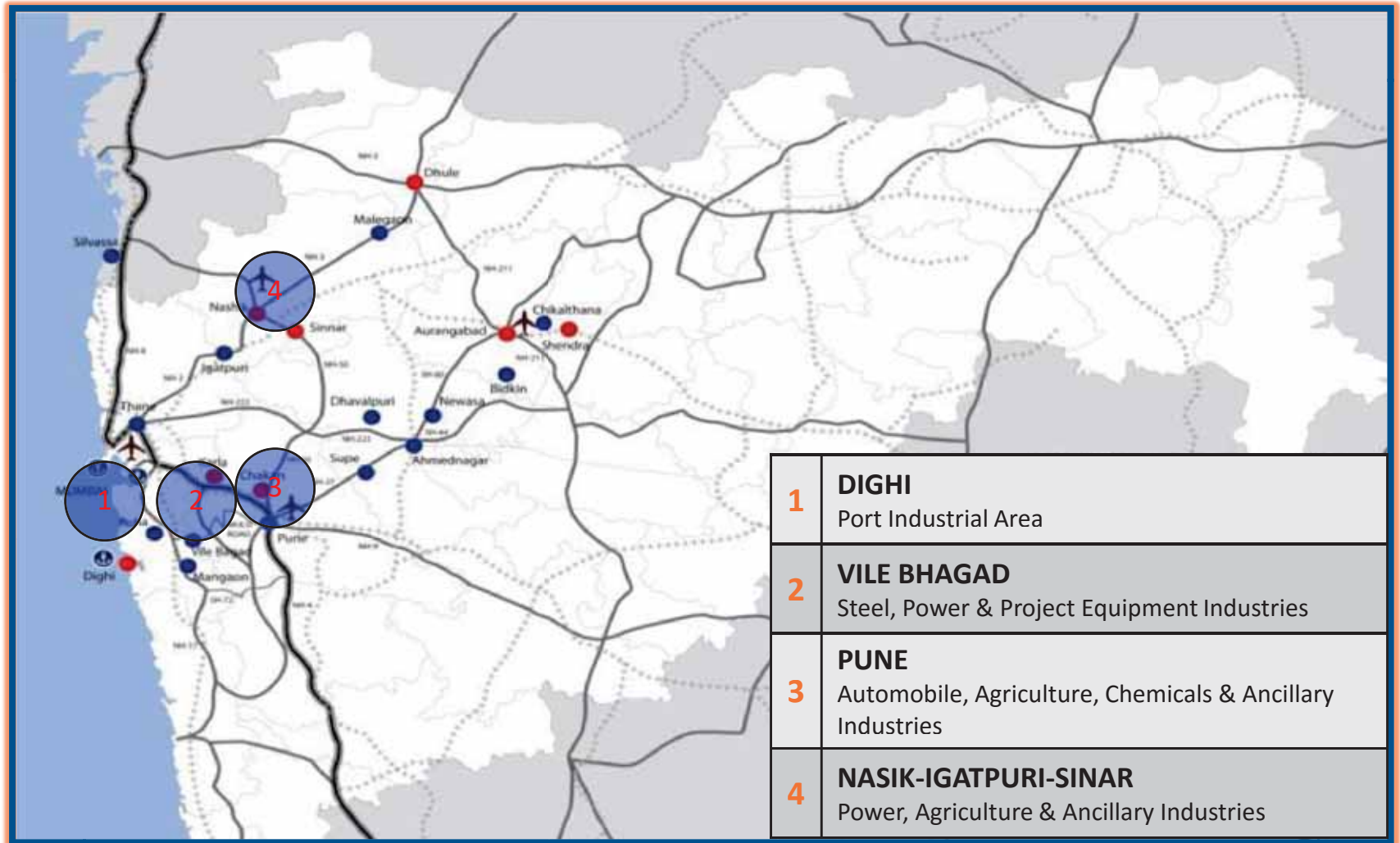
INDUSTRY, ENERGY AND LABOUR DEPARTMENT  
GOVERNMENT OF MAHARASHTRA



# DELHI MUMBAI INDUSTRIAL CORRIDOR (DMIC)



## PROPOSED CLUSTERS



## CSR Initiatives by Dighi Port Limited

- Direct & Indirect Employment for locals
- Education and Technical & Vocational Training of Youth Members at ITI, Panvel
- Water provision and electricity supply to nearby villages
- Supporting the Indian Navy, Coast Guard and NCC in their annual drives to create awareness about social security & prevention on terrorist activities amongst the locals
- Fisherman Welfare
- Medical & Health Care facilities set up for locals
- Provision of ambulance for locals
- Aid to NGO's
- Sponsoring sport activities for locals
- Contributing towards celebration of local festivals

# DIGHI PORT

## A PICTORIAL SNAP SHOT



# DIGHI PORT A PICTORIAL SNAP SHOT



# DIGHI PORT

## A PICTORIAL SNAP SHOT





# DIGHI PORT

## A PICTORIAL SNAP SHOT





# PROJECT TEAM

## PROJECT TEAM



Mr. Vijay Kalantri	Chairman & Managing Director
Mr. Vishal Kalantri	Director
Mr. Vinay Kalantri	President – Business Development
Capt. B.R Pathak	President - Operations
Mr. Dwiresh Oza	President - Finance
Mr. Amol Vidwans	President - IT
Col. Parminder Rai	Assistant Vice President - Admin
Mr. Vivek Dave	General Manager – Accounts
Mr. Ratan Maheshwari	General Manager – Project Development
Ms. Rajshri Kolekar	Deputy General Manager- Business Development

**Highly professional team with vast experience in maritime industry**

# KNOWLEDGE PARTNERS



- M/s HALCROW GROUP UK
- M/s FEEDBACK VENTURES
- M/s DELOITTE TOUCHE TOHMATSU INDIA PRIVATE LIMITED
- M/s IL&FS TRANSPORTATION NETWORKS LTD
- M/s NATIONAL ENVIRONMENTAL ENGINEERING RESEARCH INSTITUTE (NEERI)
- M/s CENTRAL WATER AND POWER RESEARCH STATION (CWPRS)
- M/s NATIONAL INSTITUTE OF OCEAN TECHNOLOGY (NIOT)





Thank You

**BIPL**

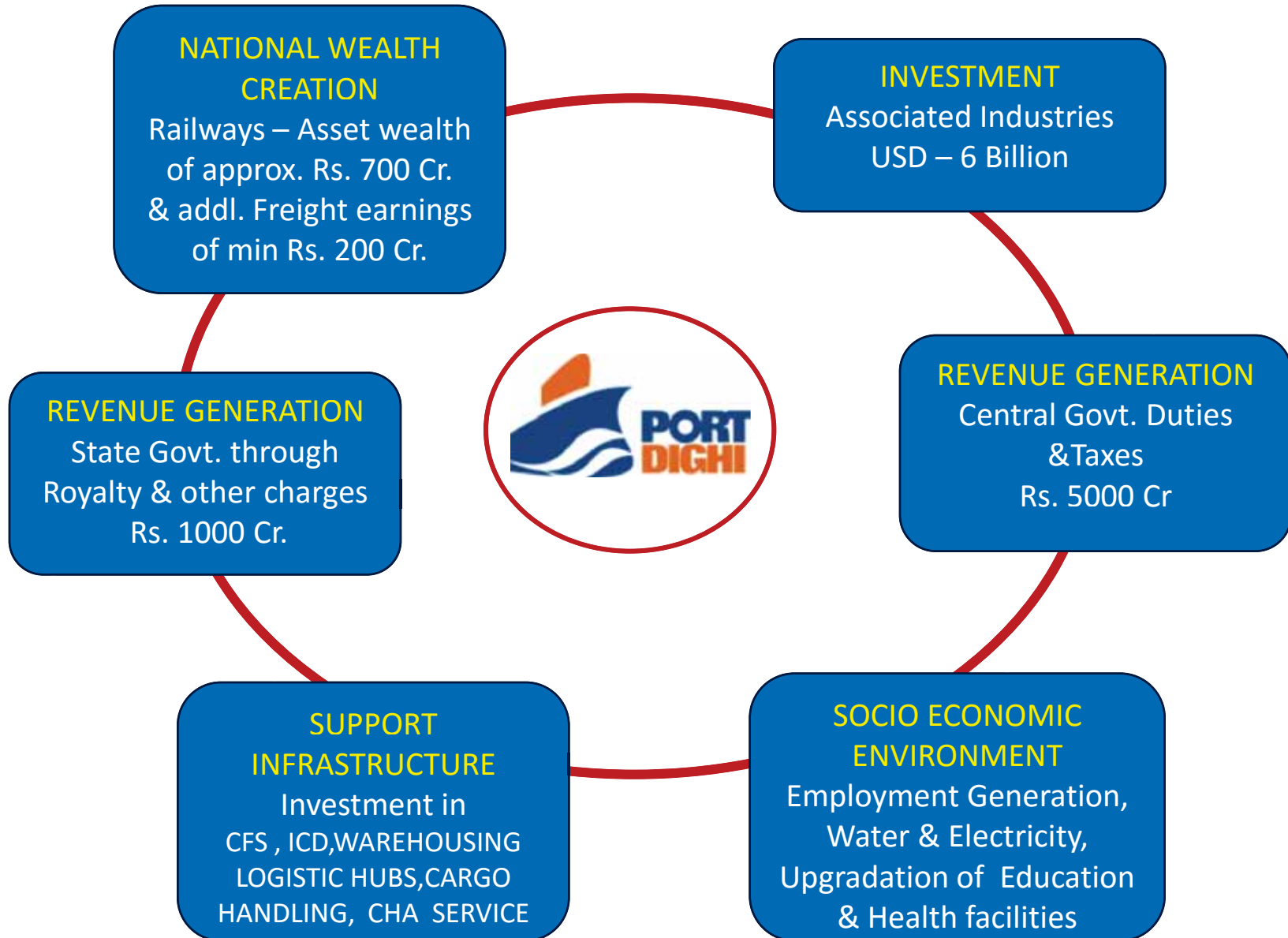
Balaji Infra Projects Limited

[www.balaji.co.in](http://www.balaji.co.in)



[www.dighiport.in](http://www.dighiport.in)

# ECONOMIC IMPORTANCE OF DIGHI PORT



## DMIC & NIMZ – THE DIGHI NODE



### DIGHI PORT - Project Investment

- Port
- SEZ & FTWZ
- Railway & Roads
- Logistic Hub

**Total investment of approximately USD 2 Billion in phases in port and port related infrastructures**

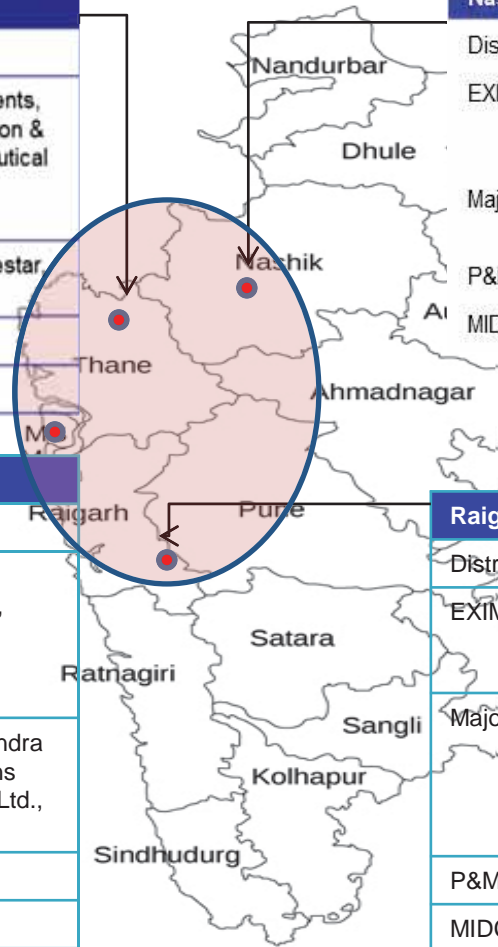
- Integrated Infrastructure development for better efficiency and economics
- Largest node of the Delhi Mumbai Industrial Corridor in Maharashtra
- Received an in – principle nod for the DFC to be extended
- Part of the National Investment & Manufacturing Zone (NIMZ)

**Only non – major port in Maharashtra to be a part of the prestigious DMIC & NIMZ**

# Key Hinterland – contd..

Thane	
District GDP	US\$ 25.40 bn
EXIM Products	Nylon Synthetic Readymade Garments, Embroidered Fabrics, Textiles, Cotton & Art, Silk, Food Products, Pharmaceutical Product, Engineering products, Chemicals
Major Companies	Pfizer, Lubrizol, NOCIL, BASF, Bluestar Eicher Motors
P&M Investment	US\$ 2.52 bn
MIDC & SEZ	13 MIDCs & 4 Multiproduct SEZs

Nasik	
District GDP	US\$ 9.58 bn
EXIM Products	Electrical assembly, electronic controller, electrical pumps, synthetic resins, grape wine, pharmaceuticals
Major Companies	Mahindra Auto, Jindal SAW, MAHAGENCO, Wineries
P&M Investment	US\$ 1.49 bn
MIDC & SEZ	7 MIDCs



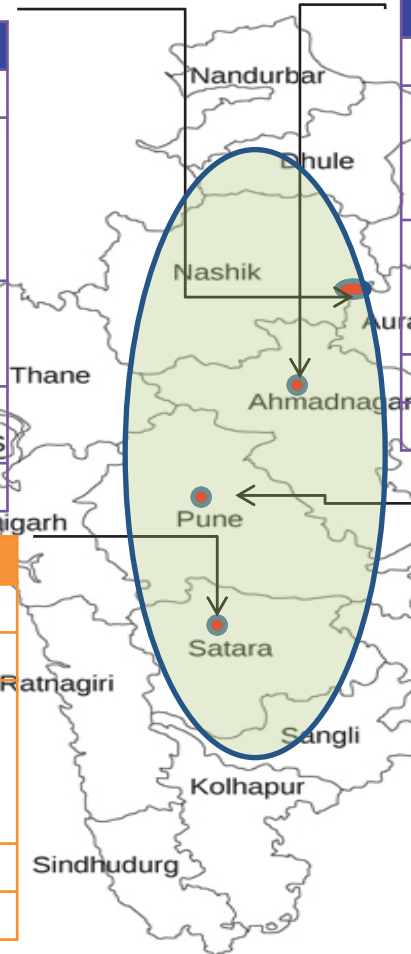
Mumbai	
District GDP	US\$ 41.58 bn
EXIM Products	Engineering, Chemical, Nylon Synthetic Readymade Garments, Embroidered Fabrics, Textiles, Cotton & Art, Silk, Food, Pharmaceutical
Major Companies	Godrej Industries, L&T Ltd., Mahindra & Mahindra, Johnson & Johnsons Ltd., HPCL, Crompton Greaves Ltd., CEAT Ltd.
P&M Investment	US\$ 4.87 bn
MIDC & SEZ	1 MIDC & 2 SEZs

Raigad	
District GDP	US\$ 5.54 bn
EXIM Products	Chemical, paint, pharma, engg. products, petrochemicals, plastics, food & agro products
Major Companies	POSCO, JSW Steel, Maharashtra Seamless, Bhushan Steel, Rashtriya Chemicals & Fertilizers, Cornos Steel, Deepak Fertilizers, Bombay Dyeing
P&M Investment	US\$ 3.07 bn
MIDC & SEZ	6 MIDCs & 11 Multiproduct SEZs

# Key Hinterland – contd..

Aurangabad	
District GDP	US\$ 5.59 bn
EXIM Products	Television sets, LCDs, Washing machines, Air conditioners, coolers, auto components, 3 wheelers, four wheelers, generators, motor engines, pharmaceuticals, braveries,
Major Companies	Wipro, Videocon, Garware, Hindalco, Can Pack India Beverages, Verroc Engineering, Good Year South Asia
P&M Investment	US\$1.26 bn
MIDC & SEZs	7 MIDCs & 6 Multi-product SEZs

Satara	
District GDP	US\$ 4.48 bn
EXIM Products	Agro based products
Major Companies	Cummins India, Tata Cummins, Emerson Climate Technologies, Cooper Corporation, Alfa Laval, PMP Components, Godrej & Boyce Mfg. Co., Mukund Bekaert Wire Industries
P&M Investment	US\$ 0.75 bn
MIDC & SEZs	10 MIDCs & 2 SEZs



Ahmednagar	
District GDP	US\$ 6.06 bn
EXIM Products	Switchgear, seamless tubes, automobile, print circuit board, electric, motors, forging items, pharmaceuticals etc.
Major Companies	Sun Pharma, L&T, Crompton Greaves, Uni Klinger, GKN Sinter Metals, Indian Seamless Metal Tubes, Cooperative Sugar Mills
P&M Investment	US\$ 1.06 bn
MIDC & SEZs	5 MIDCs

Pune	
District GDP	US\$ 22.20 bn
EXIM Products	Automobile spare parts, machine tools, food products, diesel engines, medicine, electronics products
Major Companies	Tata Motors, Mahindra, Bajaj, General Motors, Bharat Forge, Mercedes Benz, John Deer, Emcure Pharma,
P&M Investment	US\$ 2.20 bn
MIDC & SEZs	5 MIDCs