

CONTAINERIZED BULK HANDLING

9TH INDIAN OCEAN
PORTS & LOGISTICS
2015



The Process



An Innovative Solution



25 Lifts per hour

750 Tonnes per crane per hour

2 Cranes (8hr shift)

12000 Tonnes per day



Container Specifications



Existing Bulk Loading Infrastructure



Capital Cost = USD150-250 million

MHC Model

- Cranes x 2 = USD\$ 8,000,000
 - Containers x 30 = USD\$ 300,000
 - CHE = USD\$ 500,000
 - Revolvers x 3 = USD\$ 1,200,000
- = 10 million

Ships Crane Model

- Revolvers x 2 = USD\$ 800,000
- Misting System = USD\$ 200,000
- Container = USD\$ Leased
- Fork Truck = USD\$ Leased

Containerised Bulk Process

Loading commodity



Land Transport



Quay Side



With Revolver®



Load Ship at Port



Lift from Storage



- Flexible Berths-No fixed bulk berths
- No Dust
- Fast to start
- Low Cost



Revolver®



Cranes



Containers



REVOLVER trailer system



Dust Free



Materials Handled

- Grains
- Wood Chip
- Coal
- Iron Ore
- Mineral Sands
- Copper Concentrates
- Scrap Metal
- Bagged Material
- Soya



Cost

- Lower set up costs (no conveyor, ship loaders, storage sheds)

Environmental

- Zero dust, no clean up
- Best practice by EPA with fast approval

Safe and Fast

- Virtually man less operation with loading rates of 1200 TPH per crane

Proven and Re-locatable

- Providing a simple proven turnkey solution to exporters



Case Studies

IMX crosses 2m-tonne export milestone

BUSINESS EDITOR CHRISTOPHER RUSSELL - THE ADVERTISER - JULY 05, 2012 11:24AM

COOBER Pedy iron miner IMX Resources has passed a milestone two million-tonne mark for exports.

The company has gone on to load a record 85,140 tonnes at Port Adelaide aboard the Trans Hangzhou which departed on the weekend.

“Thanks to the efforts of our broker, Probulk in Singapore, and operator Cargill, we managed to locate a uniquely sized vessel that fitted the requirements of Port Adelaide,” IMX logistics manager Mark Hoepfl said.

“We have shipped over two million metric tonnes to date and we usually average approximately 75,000 metric tonnes per vessel.

“Our previous record was 80,471 metric tonnes, making this a landmark shipment,” Mr Hoepfl said.

The ore – a unique blend of iron and copper – is from IMX’s Cairn Hill mine southeast of Coober Pedy.



IMX Resources' logistics manager Mark Hoepfl with a cargo ship bound for China. Picture: Bianca De Marchi. Source: The Advertiser

Exxaro - Congo

IRON ORE

- MHC Crane
- Lid lifter
- 44T capacity



Ironclad

IRON ORE

Ships Crane



Elitheni Coal

COAL

MHC Crane



Transnet Tshipi é Ntle

MANGANESE



STS Crane



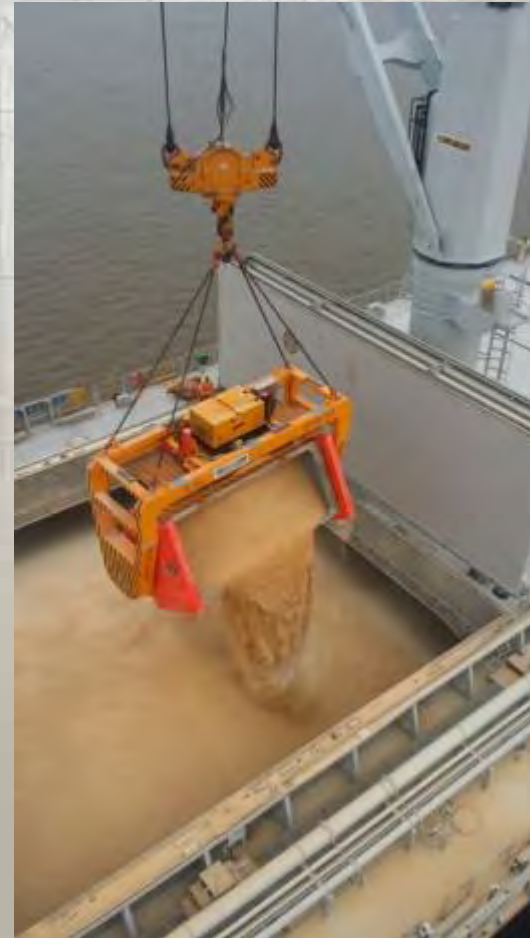
Puerto Angamos Chile

COPPER

STS Crane



TPR Chile



GRAIN

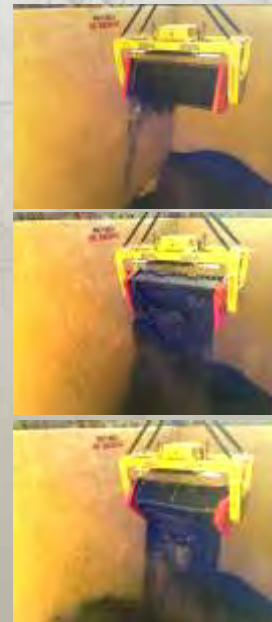
STS Crane



Patrick Ports Port Kembla - Australia

Copper Concentrate

Ships Crane



“Patrick was able to utilize this new revolving spreader technology to export copper concentrate for our client with very little capital outlay....

....our client was extremely pleased with the dust free solution”



Adrian Howard
Commercial Director



PATRICK

“Environmentally it is a very clean system due to containers being emptied directly into the ship’s hold thereby minimizing a number of dust generating points

....loading rates of 13,000mt per day are being achieved, that helps minimize shipping costs”



Jim Smith
North Parkes Mine



“It’s not often that you find a solution that equals lowest cost and is also best practice environmentally”

Andrew Towers

– Director Engineering DP World Australia

PORTSIDE SOLUTIONS PTY LTD
www.portsidesolutions.com.au

RAM UK: +44 1695 556 355
sales.uk@ramspreaders.com



Visit: RAM Spreaders to view the Revolver[®] and their comprehensive range of container lifting equipment



Containerized Bulk Handling Group
Pit to Ship Export Solution

Visit: Containerized Bulk Handling Group to see the full Containerized Bulk Handling Process

