



GANTREX[®]
ON TRACK. WITH YOU.

RailLok[™] technology for crane rail fastening

16th Intermodal Africa, Mombasa, Kenya
17th November 2016

The GANTREX Group of companies

Founded in Belgium **45 years** ago

Turnover **85 Mio€** per year

More than **300 people** employed

ISO 9001 : 2008 certified



The GANTREX Group of companies

Global leader of crane and specialty tracks solutions
completed by **substantial local presence** to be

With you



Operational Centers



www.gantrex.com

Industries we serve

Whether it's cranes traveling on rail or machinery moving on specialty tracks, you will find **GANTREX** there

AMONG OTHERS INDUSTRIES,
FOR CRANES AND FOR SPECIALTY RAIL TRACKS



Applications we cover

We offer a **diverse portfolio of capabilities**



Overhead
Cranes



Cranes
Trolley
Tracks



Maintenance
Pits



Automated
Stacking Cranes



Rocket Movers



STS Crane
Runways and
Trolley



Automated
Storage and
Retrieval
System



Super Heavy
Cranes



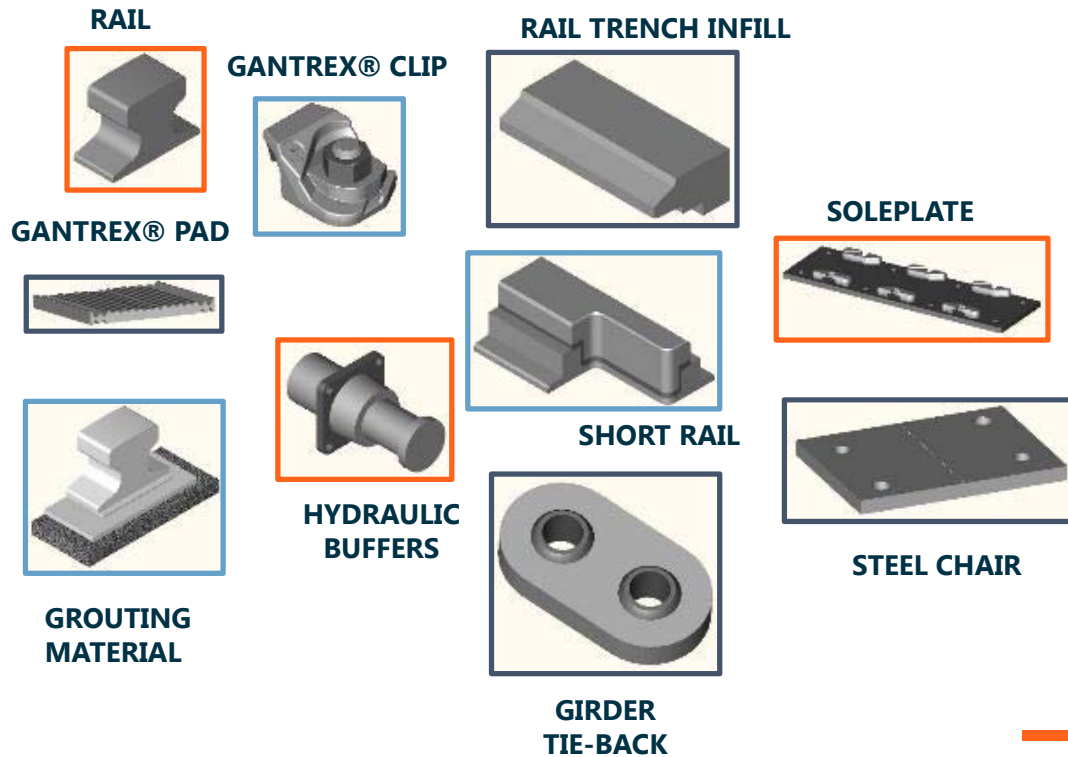
Retractable Roofs

AND MORE . . .

Solutions we provide

GANTREX' 45 years' experience and innovative solutions are offering the customer a **one-stop-shop** for reliable rail fastening **supply and installation** services

Wide range of PRODUCTS



Attentive SERVICES AND CUSTOMER SUPPORT



Container stacker yards

- Storage of containers prior to onward shipment
- Container management in yard is done by RTG, RMG or – more recently there is a trend towards – ASC cranes = Automated Stacker Cranes
 - Efficient (High Productivity)
 - Maximizes the Utilization of Yard Capacity
 - Cost Effective
 - Environmental Friendly
 - Helps to stay competitive
- Recent projects:
 - Khalifa Terminal (Abu Dhabi)
 - Jebel Ali CT3 (Dubai)
 - Pasir Panjang CT2 (Singapore)
 - Brisbane Terminal (Australia)
 - Port of Long Beach (USA)
 - Tanger Med 2 (Morocco) - upcoming



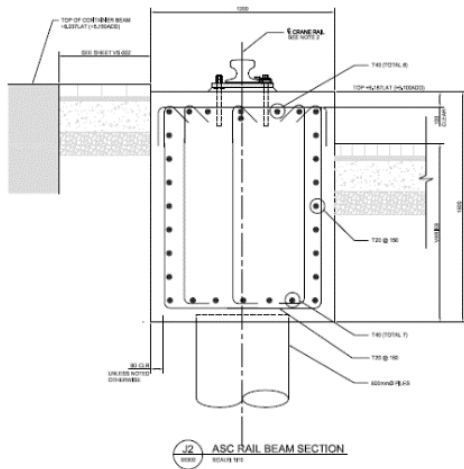
Container stacker yards



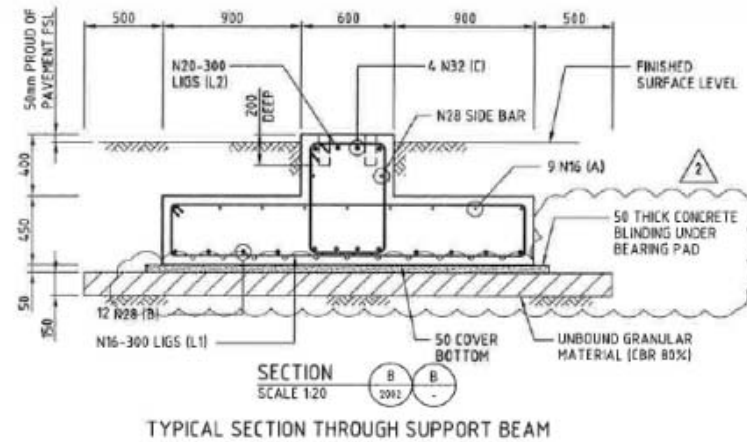
- Rail system can be supported by:
 - **Tie & ballast** : limited (positive) references, re-tamping balance is an issue
 - **Piled crane beam** : expensive but effective
 - **Un-piled concrete support** : affordable but settlement to be managed; may not be an option everywhere

Container stacker yards

Piled crane beam



Un-piled concrete support

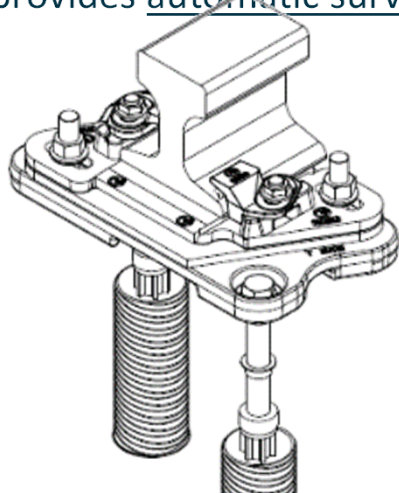


Settlement

- The issue of settlement is becoming more common, particularly as ports are being built on reclaimed land
- We have solutions to enable later realignment or levelling
- Vertical settlements can be accommodated by using connectors in the anchor bolts, or by using a fully adjustable rail chair
- Lateral adjustment can be provided according to the expected settlement
 - Small adjustments can be made during initial installation
 - If bigger adjustments are required, we need to use special adjustable rail chairs

Adjustable rail chair

- When expecting vertical settlement, and when clip adjustment is not sufficient: Adjustable rail chair
- Designed for ASC yard on un-piled support
- Features:
 - User-friendly re-level mechanism, up to 100mm, with patented 3 bolt connection
 - Lateral adjustment of 40mm, on top of clip adjustment
 - Gantrex provides automatic survey equipment (robot) and starter shim pack



Adjustable rail chair

- Reference: DP World, Brisbane



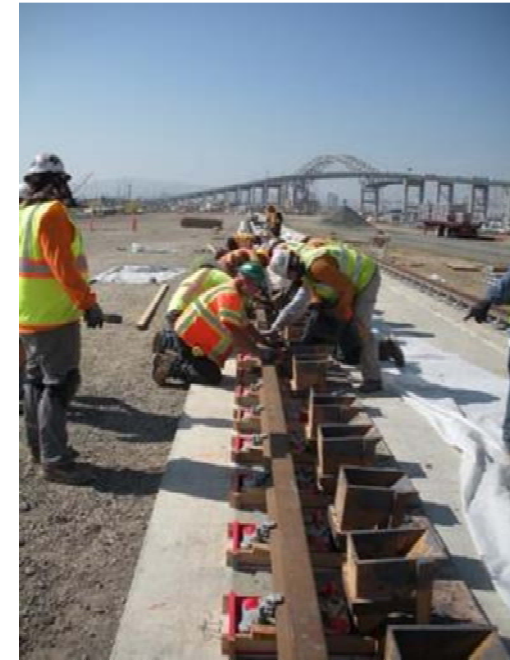
Adjustable rail chair

- Reference: DP World, Brisbane



Adjustable rail chair

- Reference: Port of Long Beach, Pier E



Adjustable rail chair

- Reference: Port of Long Beach, Pier E





GANTREX[®]
ON TRACK. WITH YOU.