

Worldwide Connection



Djibouti

Ports & Free Zones Authority



Djibouti Overview



Independence

27th June 1977

Area

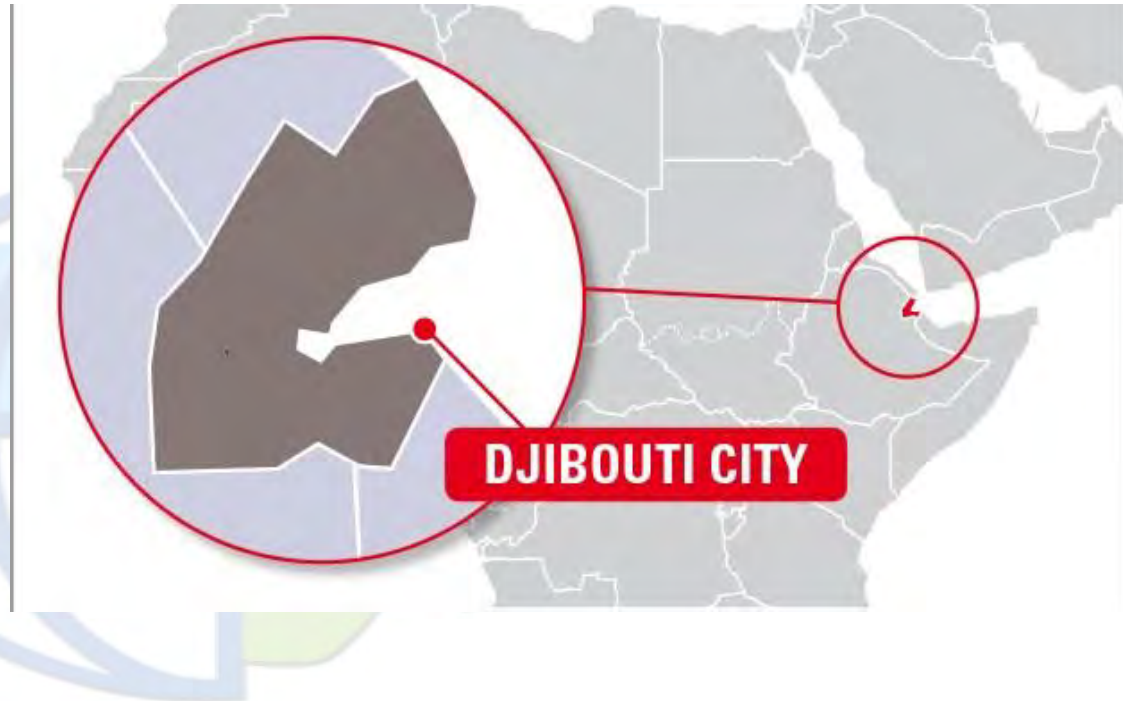
23,200 Km²

Currency:

Djibouti Francs

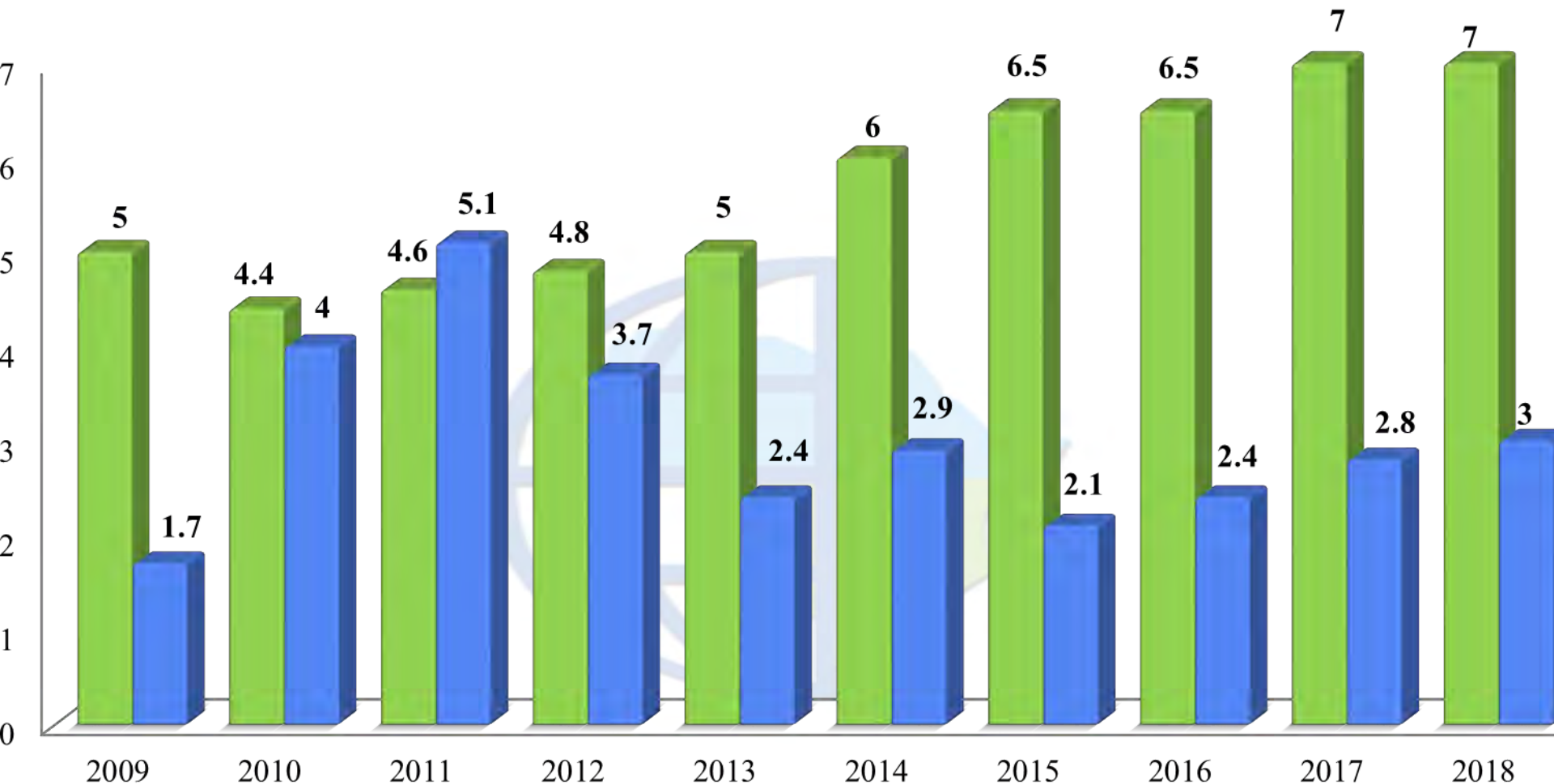
(Pegged to the US\$ since 1949)

GDP per capita



Year	2009	2010	2011	2012	2013	2014	2015	2016	2017	2018
USD	1 199	1 258	1 346	1 440	1 517	1 691	1 788	1 908	2 046	2193

Djibouti macro-economic indicators



■ Growth Rate %
Avg 5.53% over the last 9 years

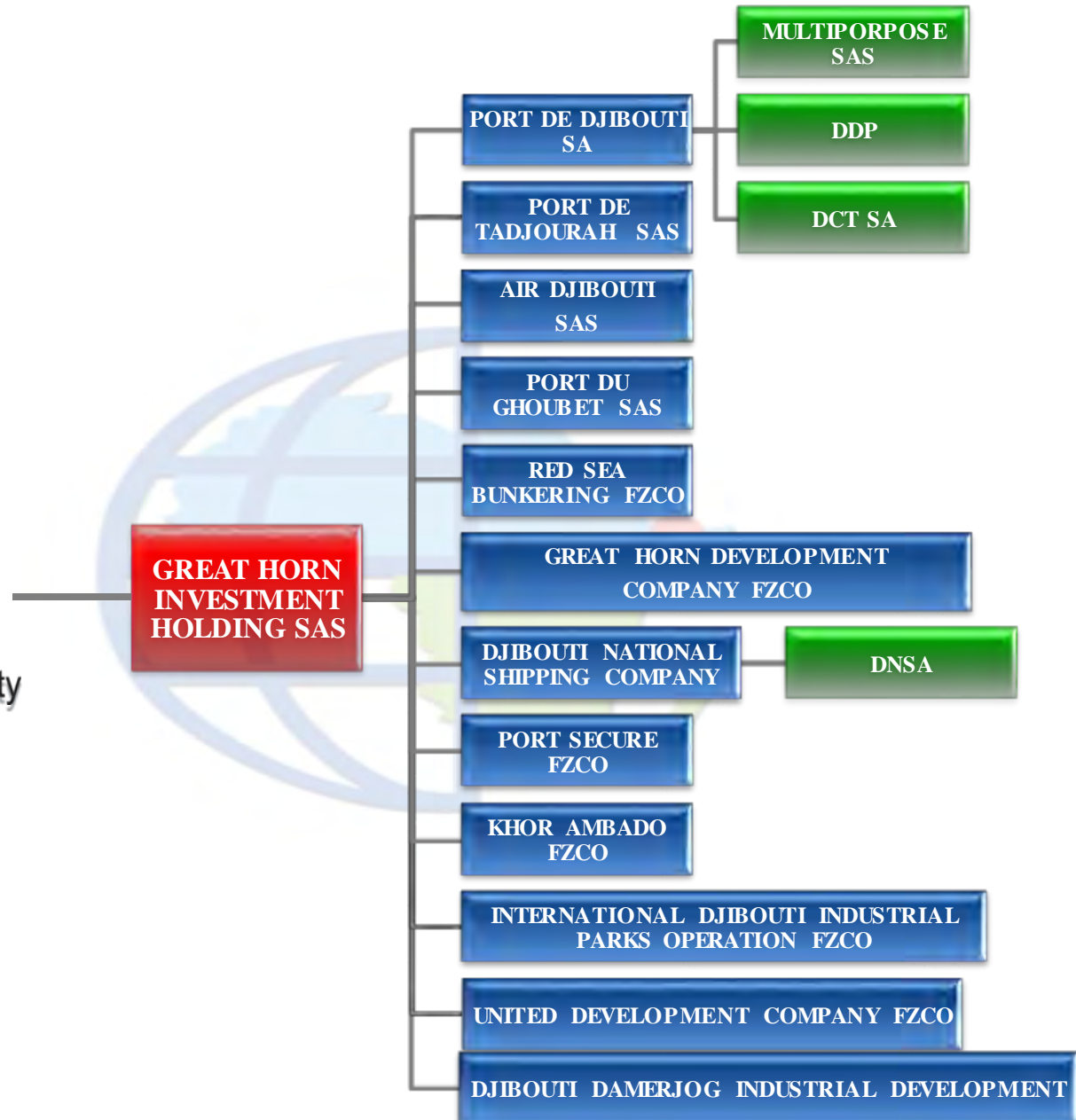
■ Inflation %
Avg 3.01% over the last 9 years

About DPFZA

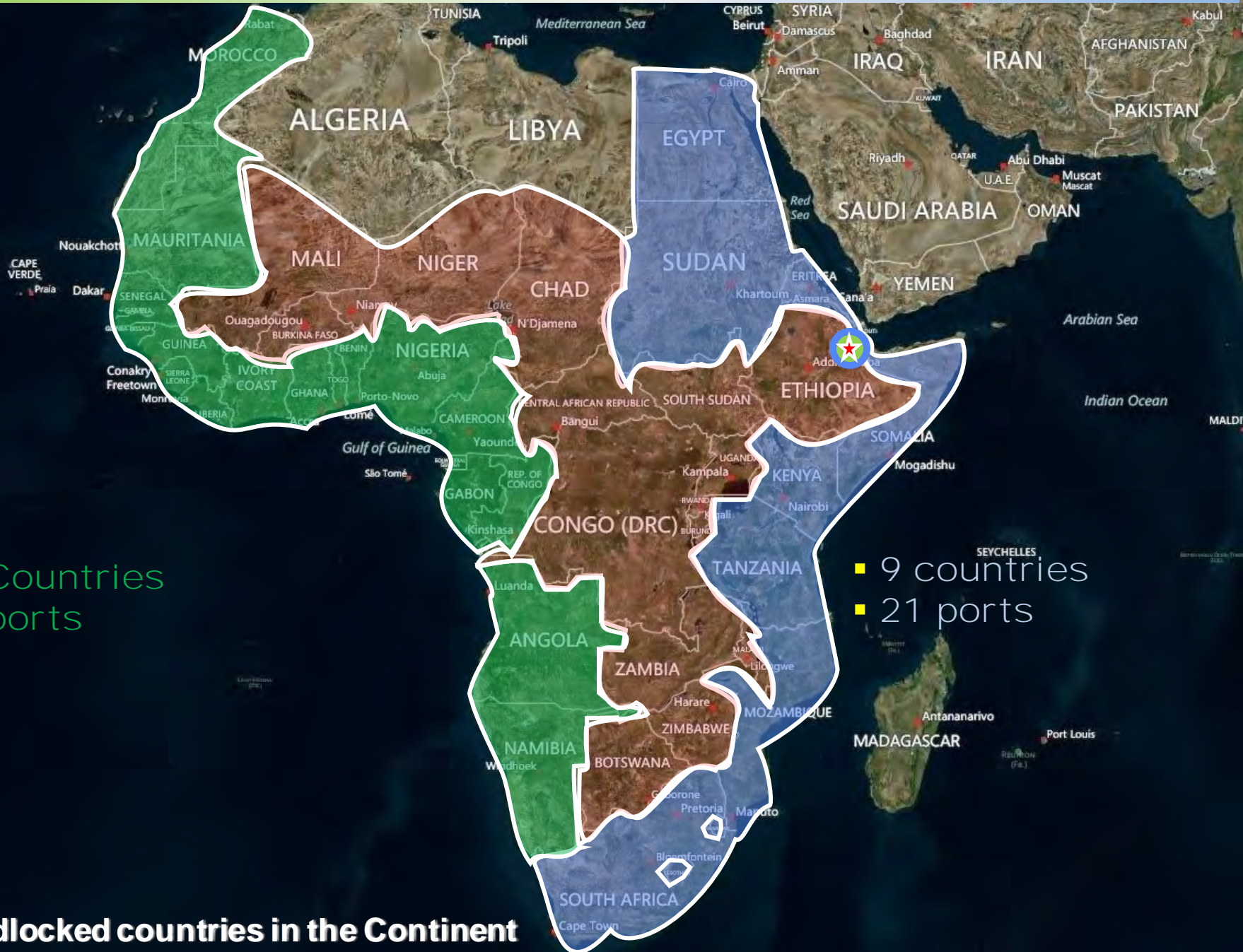


Djibouti

Ports & Free Zones Authority



African Maritime Facades



- 21 Countries
- 41 ports

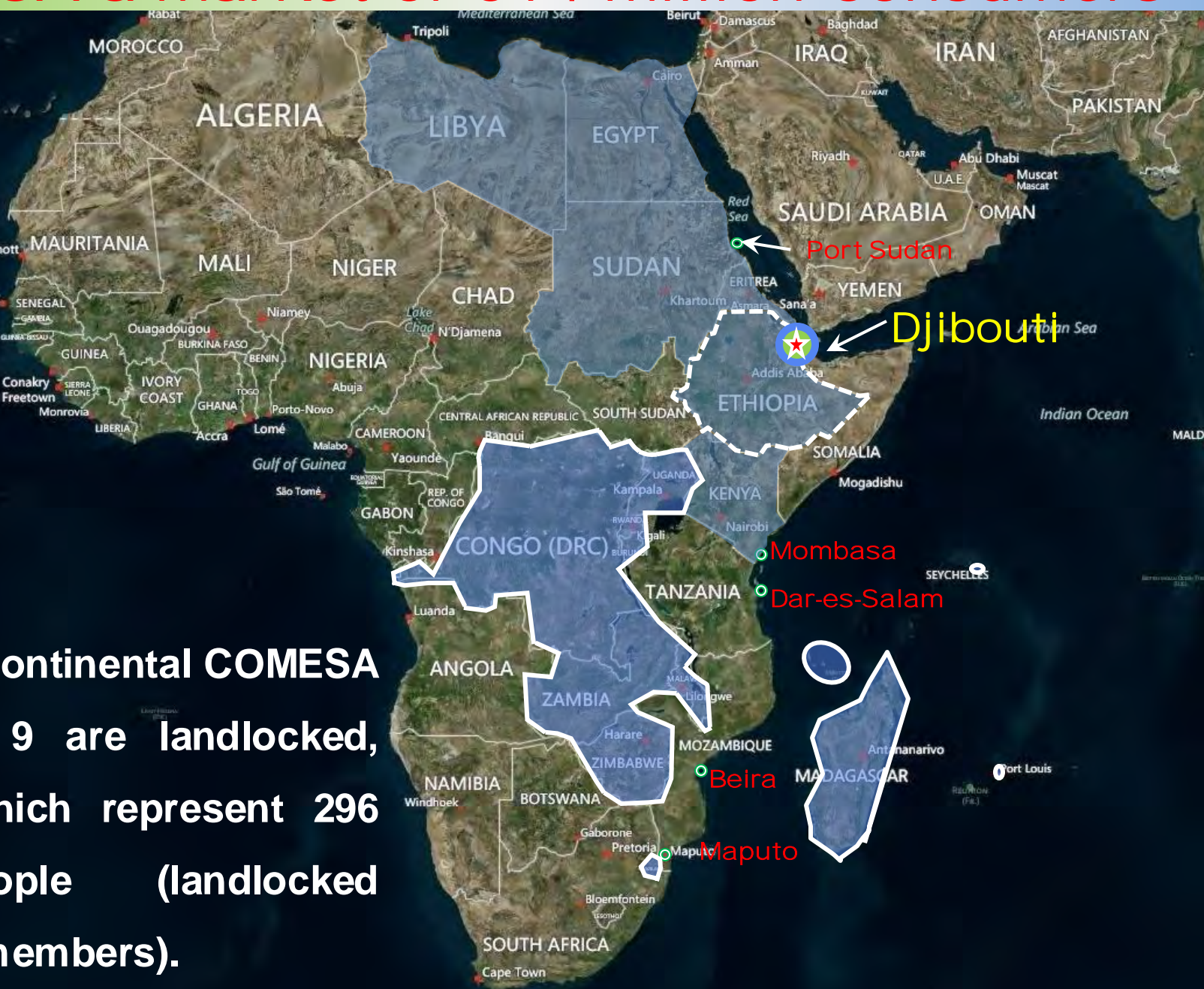
- 9 countries
- 21 ports

17 landlocked countries in the Continent

COMESA a market of 514 million consumers

- Burundi
- Comoros
- Congo (DCR)
- Djibouti
- Egypt
- Eritrea
- Ethiopia
- Kenya
- Libya
- Madagascar
- Malawi
- Mauritius
- Rwanda
- Seychelles
- Sudan
- Swaziland
- Uganda
- Zambia
- Zimbabwe

Out of 19 continental COMESA members, 9 are landlocked, 57.6% which represent 296 Million people (landlocked COMESA members).



Currently Operational Projects



- 1. Doraleh Multipurpose Port** **2. Port of Tadjourah** **3. Port of Ghoubet** **4. Air Djibouti** **5. Red Sea Bunkering** **6. Djibouti International Free Trade Zone (Pilot Zone)**

Main Logistics Platforms



DFZ

- Total area: 40 ha
- Dry Port : 19 ha
- Free zone: 21 ha (Office, Land lot, Whare house & Light industrial units.

PDSA

- Total: 4100 m of berth
- Multi Purpose Port: 3200m of berth
- Bulk Terminal: 500m of berth
- Container Terminal :400m of berth
- with RoRo berth , 12m berth depth
- First Free Trade Zone Established in 1954

DCT

- World Class Productivity: 34m/hr/crane average
- 1050m of berth, 18m berth depth.

HDTL

- Pumping capacity : 2000 T/hour/line
- Operation : 24 hours
- Depth : 20m
- Berths: Two.

DMP

- 1,200 m quay line for 6 berths at -15.35
- Can accommodate vessels up to 100,000 DWT with a handling capacity of s per year

Port of Tadjourah

Port of Ghoubet

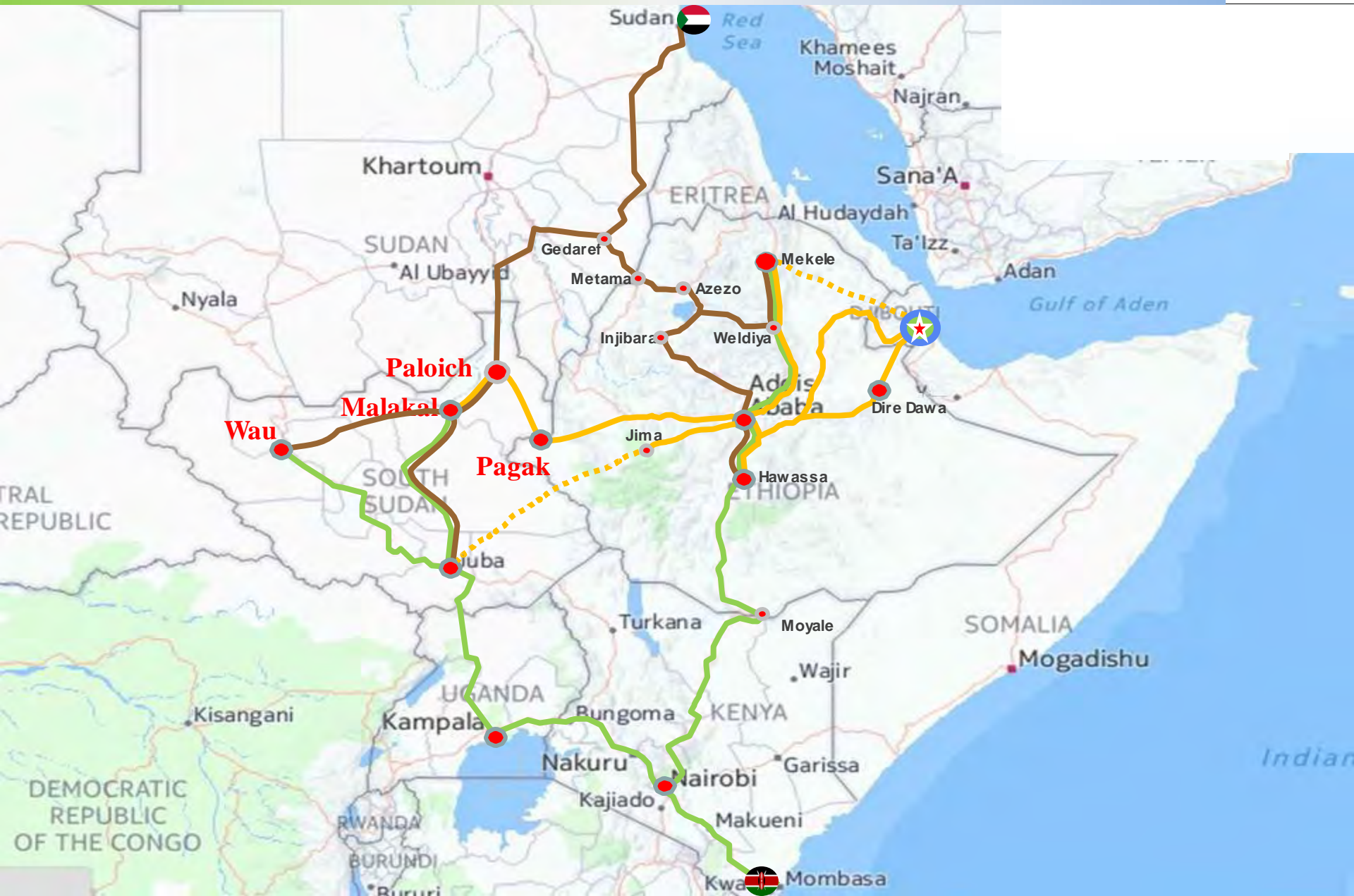


Total Investment: 91 Million USD



Total Investment: 64 Million USD

The Road Connexions



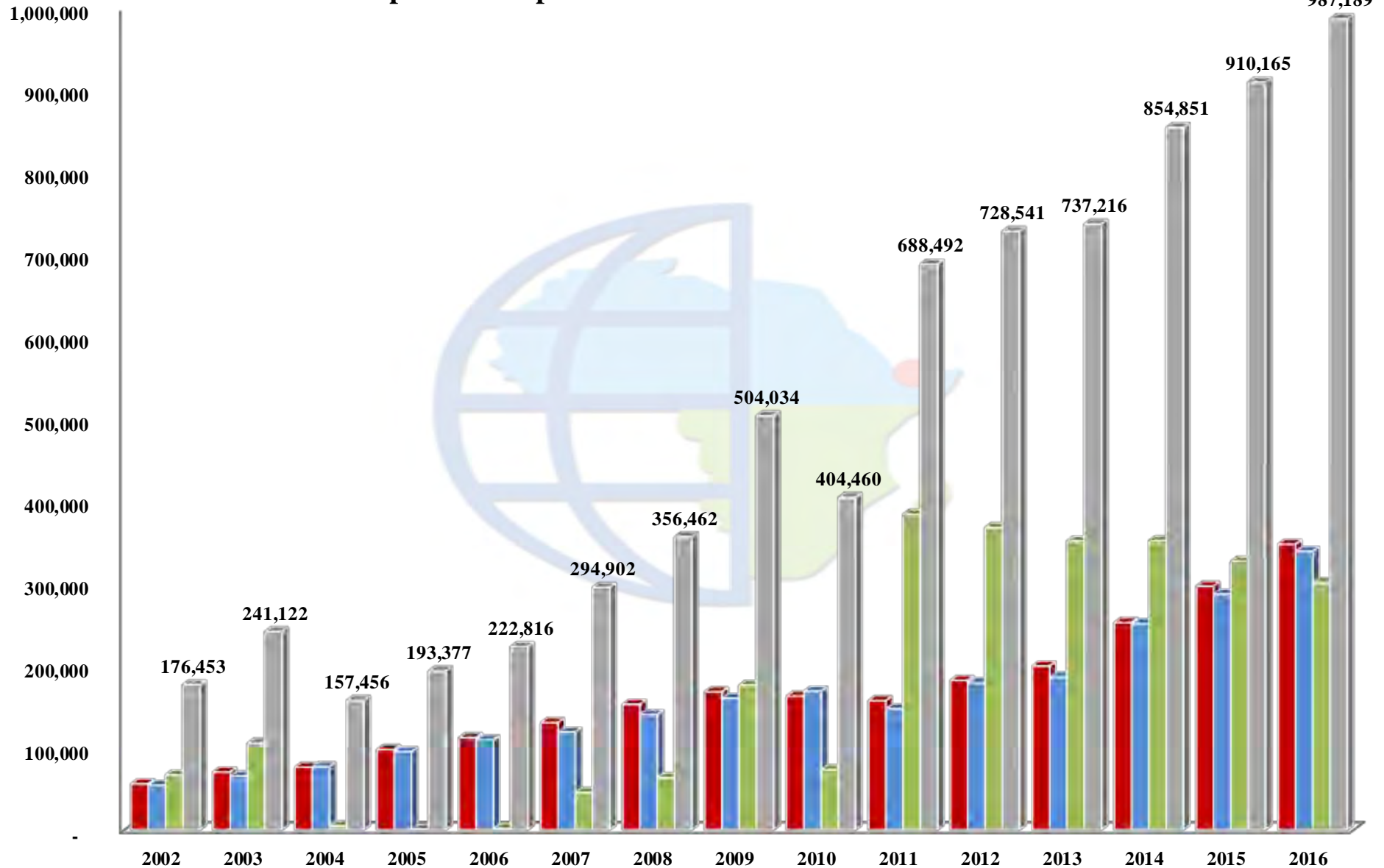
The Railway Connexions



Statistics: Containers (TEU)



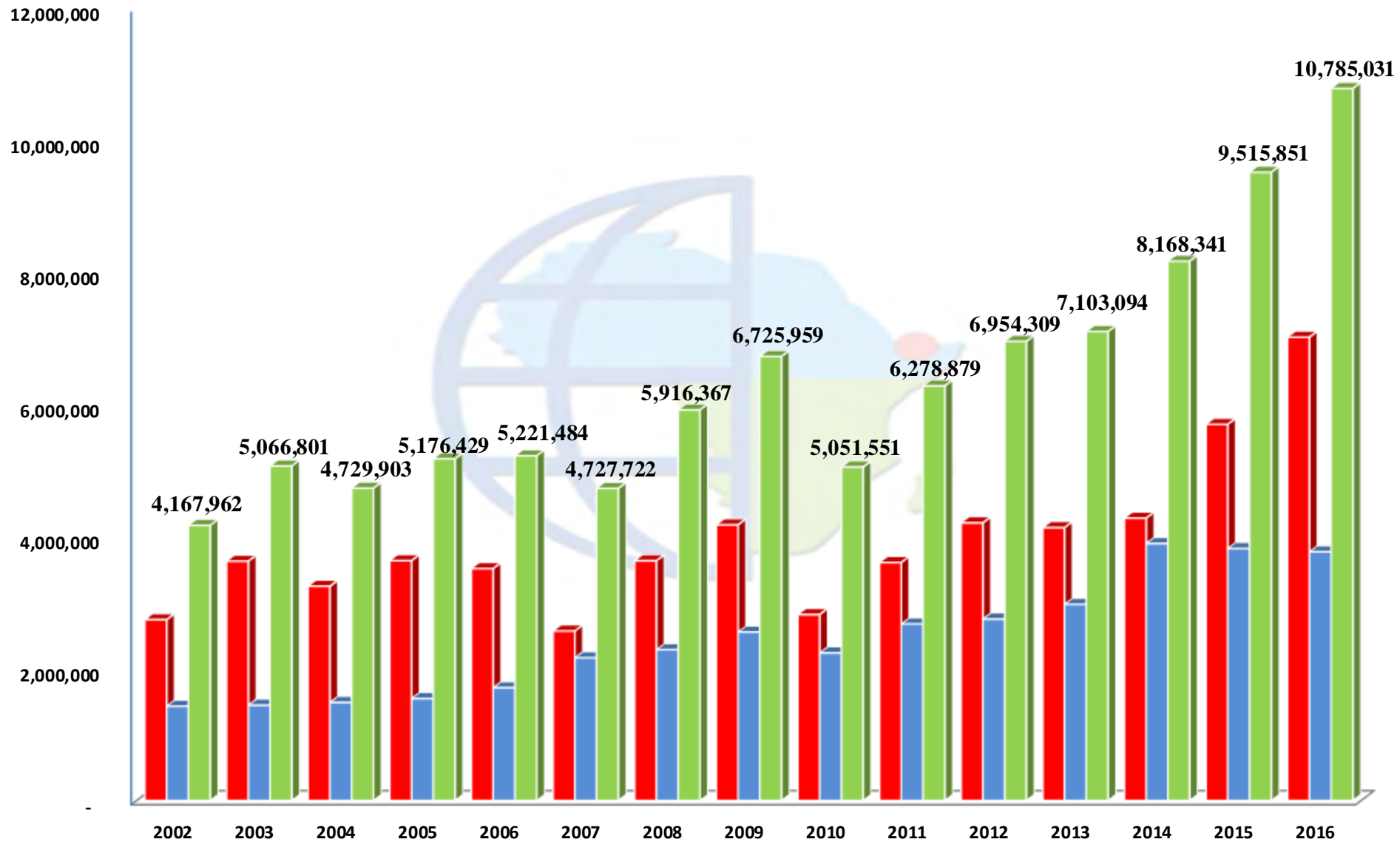
■ Import ■ Export ■ TS ■ Total Traffic



Statistics: Non containerized (Metric Tons)



■ Dry Cargo ■ Petroleum Products ■ Total



Others logistics related projects



AIR DJIBOUTI



Red Sea Bunkering



Djibouti International Free Trade Zone (in development)



• **Total Investment:** 3.5 Billion USD (over 10 years for a Total area of 4820 ha)

Power: 3700 MW over
10 years

Water : 38 000 cubic meter/day

➤ **Employment:**

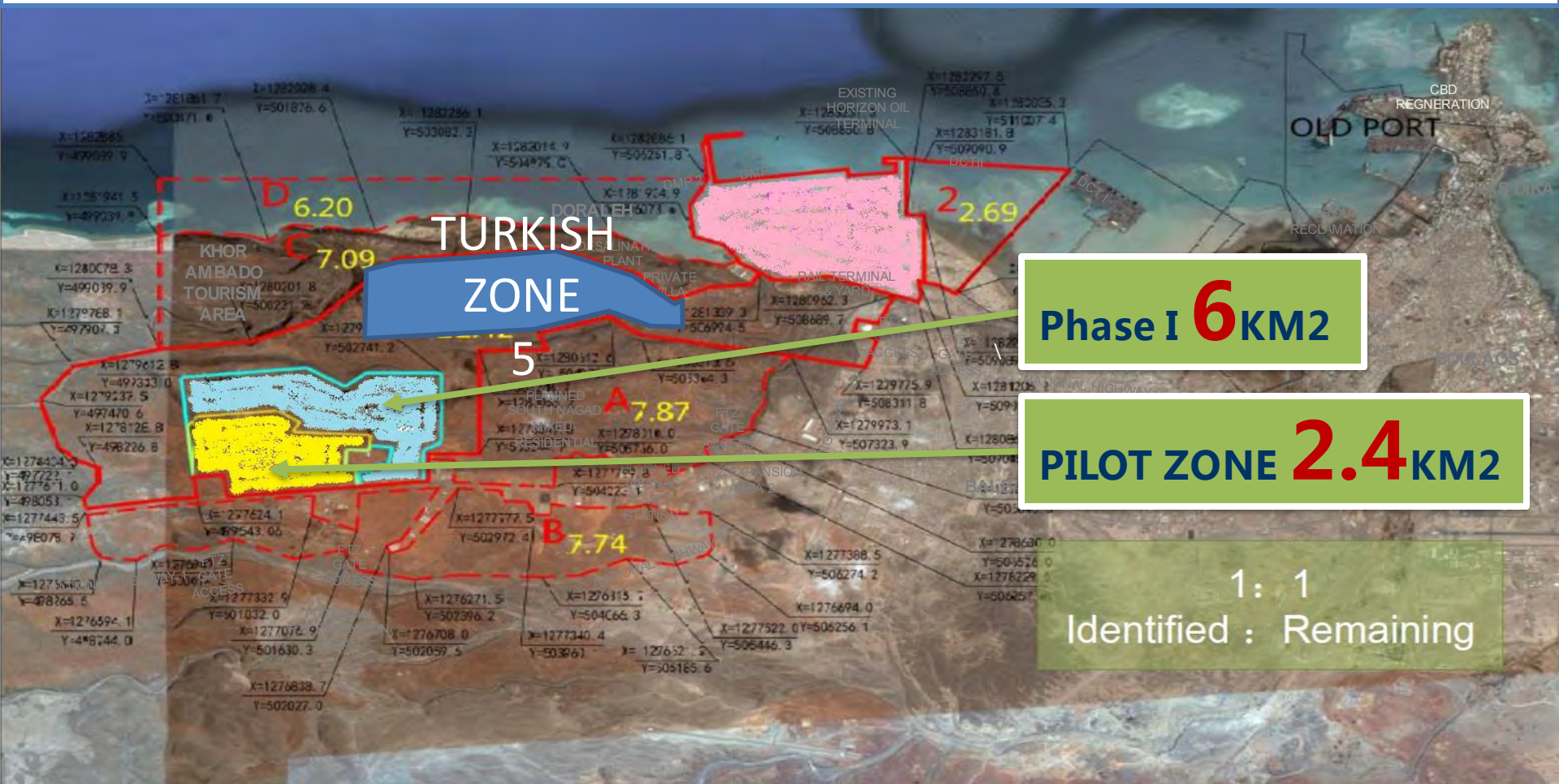
- Construction phase: 600
- Operation phase: 340 000





DJIBOUTI INTERNATIONAL FREE TRADE ZONE

The Djibouti international free trade zone occupied 48.2 KM² and Phase I comprises 3 functional areas, closed to all regional major ports.



Phase I **6** KM²

PILOT ZONE **2.4** KM²

1 : 1
Identified : Remaining

Upcoming Projects

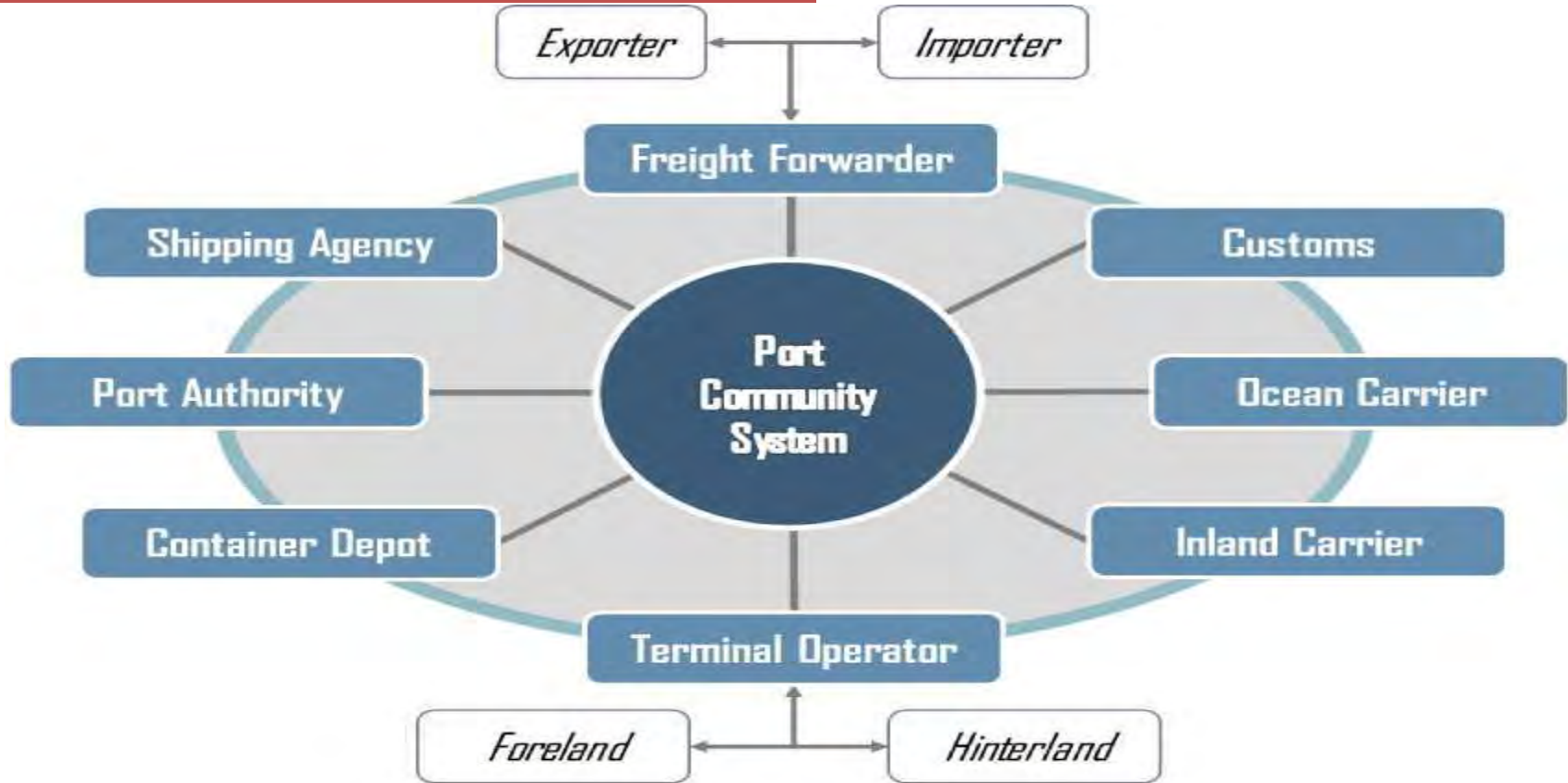


1. Import/Export Community Single Window Platform
2. Djibouti National Shipping Company
3. Djibouti International Container Terminal
4. Ship Repair Yard
5. Business District
6. Djibouti Damerjog Industries Development (DDID)
7. Al Haj Hassan Gouled Aptidon International Airport & Cargo Village
8. Al Haj Ahmed Dini Ahmed International Airport

Port Community System



• **1st Phase: 5 Million USD**



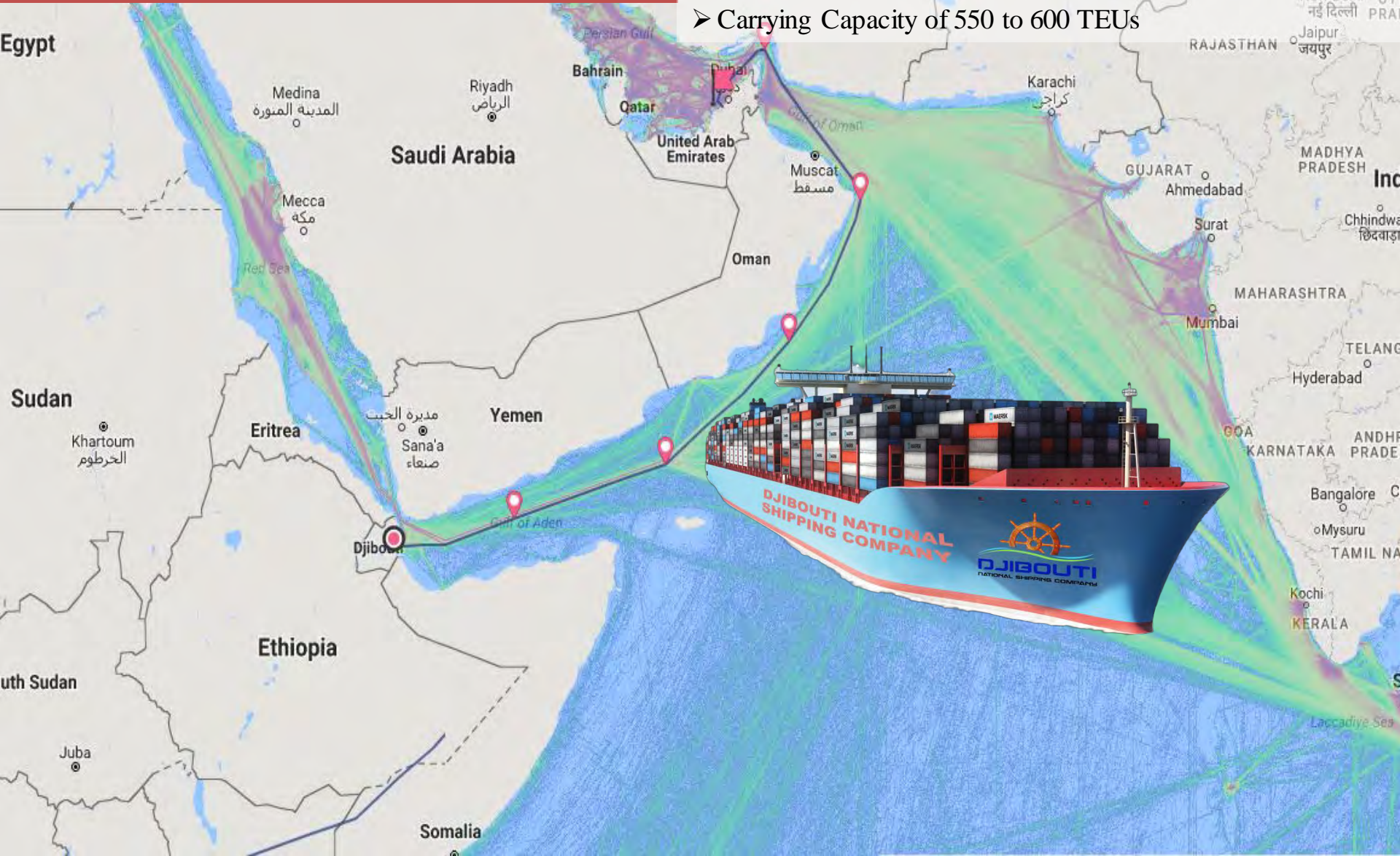
Electronic Single Window for Import/Export Community (Air, Sea, Land)	Aligned with the trade facilitation agreement of Bali
Increased transparency, Lower costs for traders, efficiency for the trade community, Better Compliance.	Integrated Port community system for faster and efficient port operations

Djibouti National Shipping Company



Total Investment: 20 Million USD

- Number of container ship :Commencing with 1 Container vessel
- Carrying Capacity of 550 to 600 TEUs





Djibouti International Container Terminal

• **Total Investment: 654 Million USD**

- First phase design capacity : 2.5 Million Teus
- Natural water depth : -18.5m
- Quay length : 1250 m



Ship Repair and Drydocks



• **Total Investment: 200 Million USD**

- **Employment:**
- Construction phase: 1000
 - Operation phase: 200



Business District



• Total Investment: 3.5 Billion USD



Djibouti Damerjog Industries Development (DDID)



Phase 1

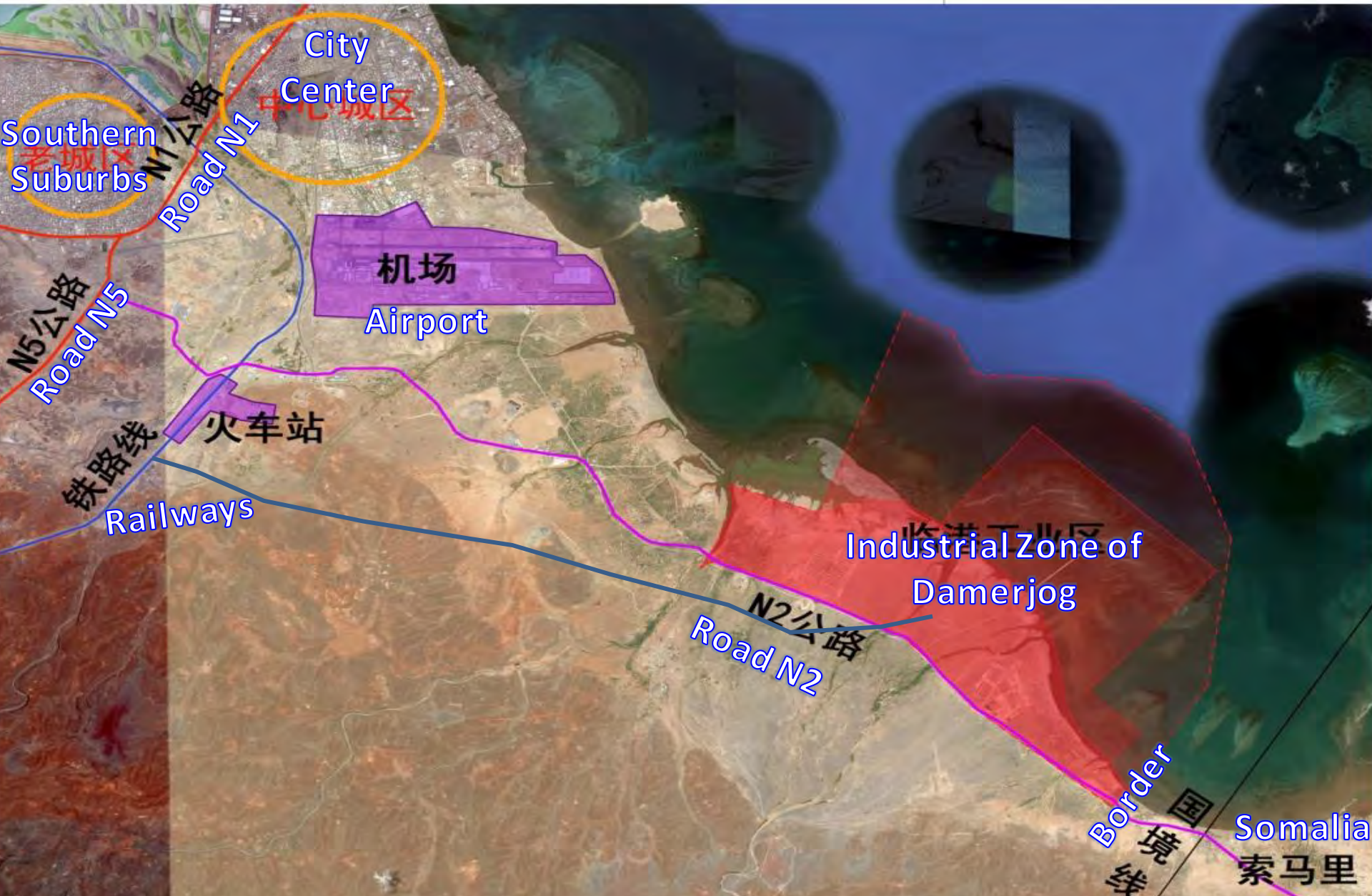
- 1. Gas Complex and its jetty
- 2. Jetty for refined oil & for crude oil
- 3. Storage tanks

- 4. A refinery
- 5. Damerjog Multipurpose Port
- 6. Livestock Terminal

Djibouti Damerjog Industries Development (DDID)



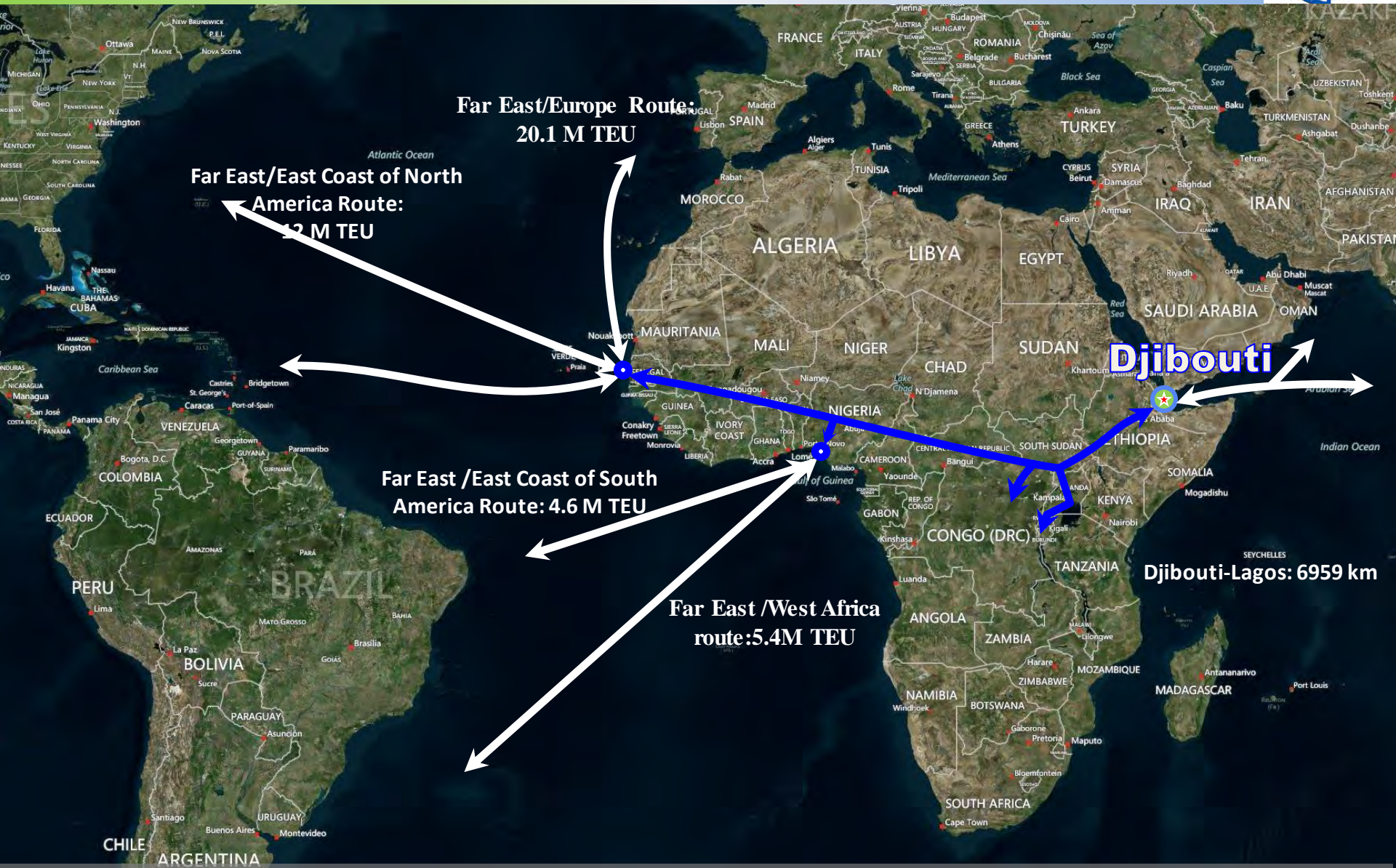
Djibouti Damerjog Industries Development (DDID)



Connecting Pipelines



Trans-African Railways (Djibouti-Lagos-Dakar)

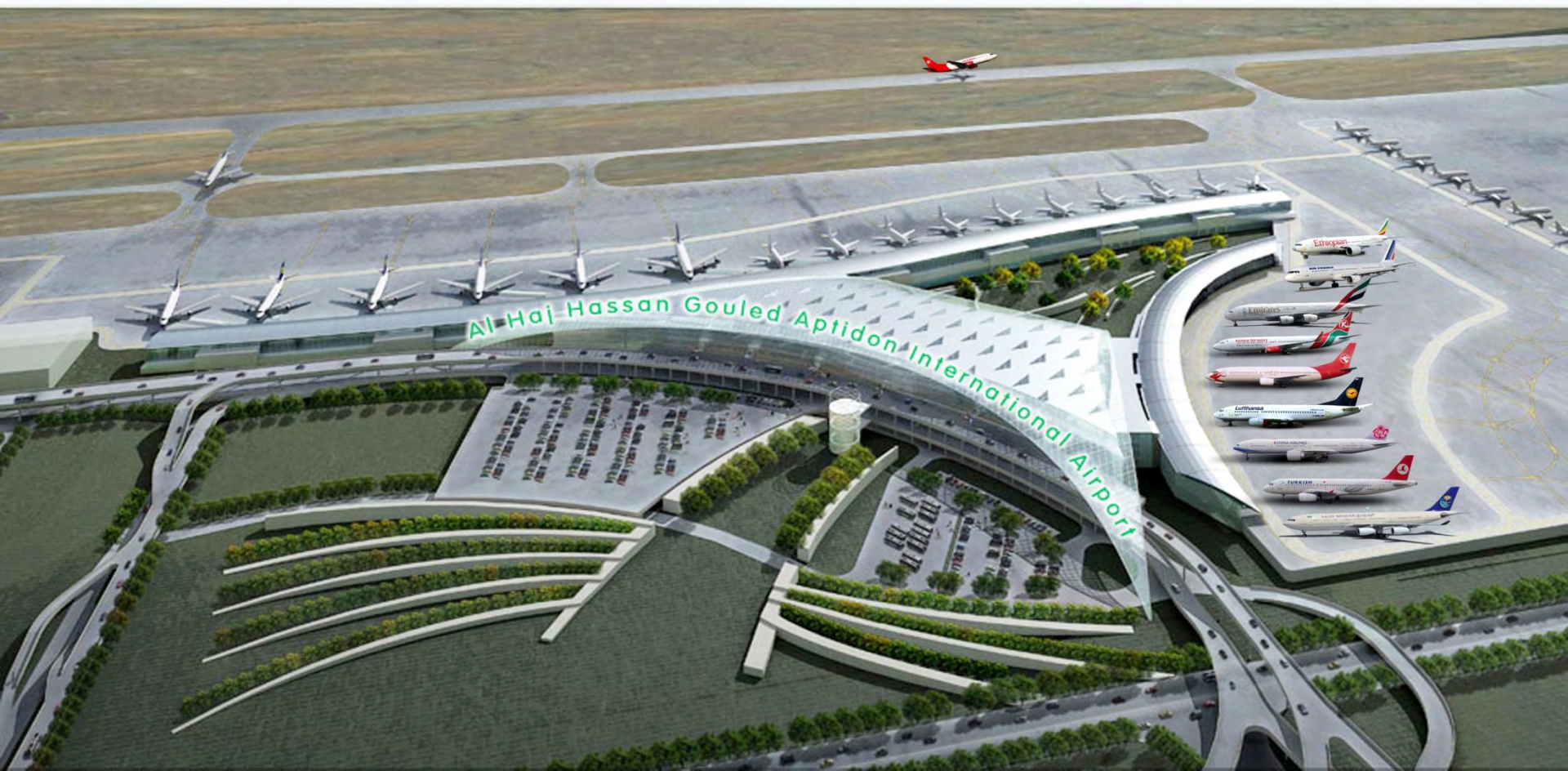


Potential container traffic of 53 Million TEUs

Al Haj Hassan Gouled International Airport & Cargo Village



• Total Investment: 385 Million USD



Al Haj Ahmed Dini Airport



- Total Investment: 100 Million USD



Completed Projects



Project	Investment (USD)	Operations Starting Date
Doraleh Multipurpose Port	580 Million	May 2017
Port of Tadjourah	91 Million	June 2017
Port of Goubet	64 Million	June 2017
Air Djibouti	66 Million	July 2015
RedSea Bunkering	100.000 (Paid up capital)	July 2015
DIFTZ (Pilot phase of 2,4KM2)	350 Million	October 2018
Total	1,151 Billion USD	

upcoming Projects



Project	Investment (USD)	To be Operational on
Port Community System	5 Million	The first Quarter 2018
Djibouti National Shipping Co	20 Million	The first Semester 2018
Djibouti International Container Terminal	654 Million	The Second Semester 2020
Ship Repairing Yard	200 Million	The second Semester 2020
Transformation of the old Port	3,5 Billion	Projet to start Second Semestre 2018
Djibouti Damerjog Industries Dev	6 Billion (Including the FDIs)	Project to start the Second Semestre 2018
Haj Hassan Gouled Aptidon Airport	385 Million	The Second Semester 2021
Haj Ahmed Dini Ahmed Airport	100 Million	The First Semester 2020
Total	10,864 Billion	

Thank You



Djibouti

Ports & Free Zones Authority

