



PORT of DARWIN - Australia's northern gateway of choice.

DARWIN PORT CORPORATION

Darwin Port Corporation

TERRY O'CONNOR
Chief Executive Officer

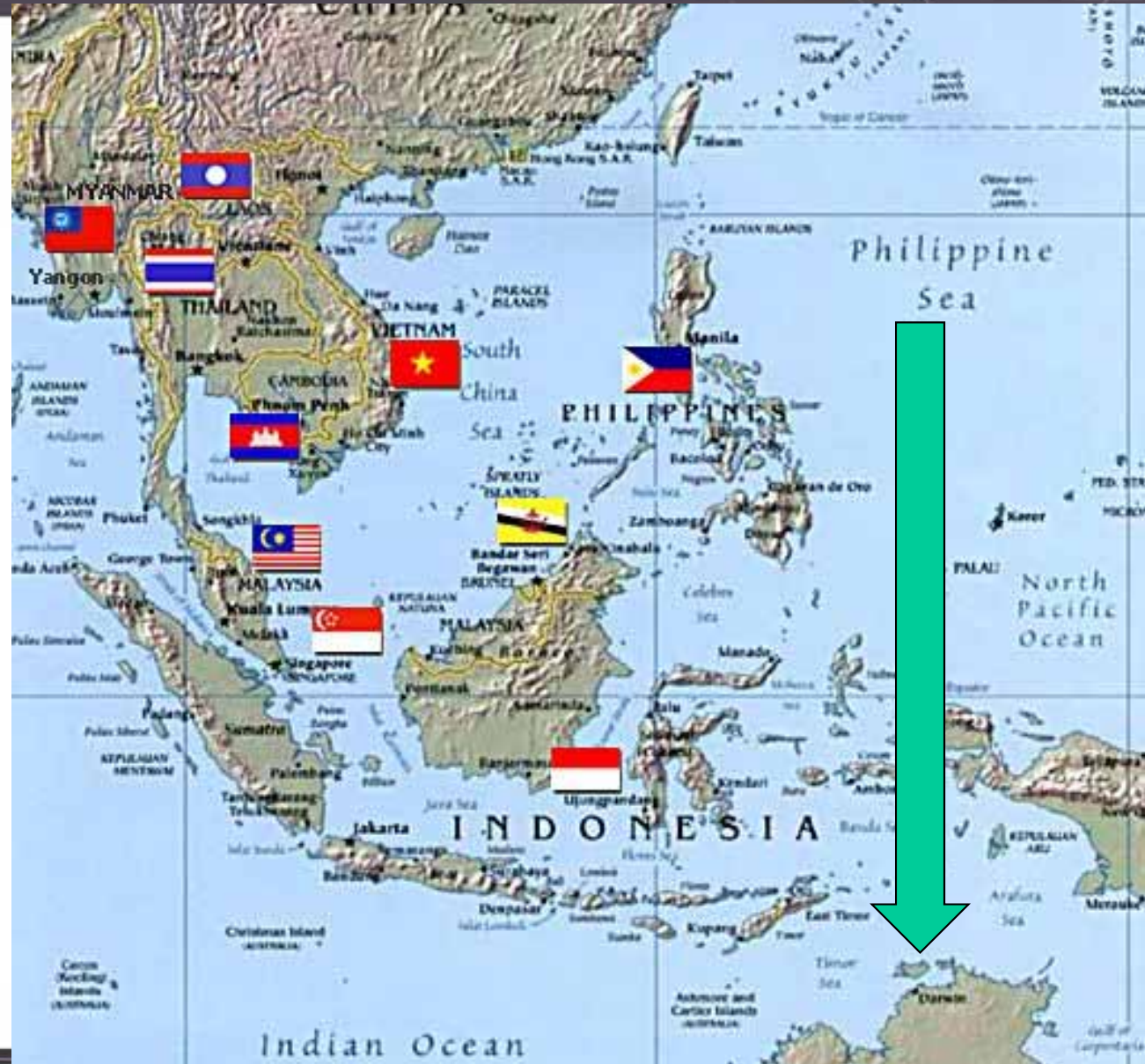
12TH ASEAN Ports and Shipping 2014



Northern Australia and ASEAN

Steaming Time Darwin to :

Ambon	1.5 Days
Jakarta	4.5 Days
Singapore	5.5 Days
Sydney	8 Days
Melbourne	9.5 Days

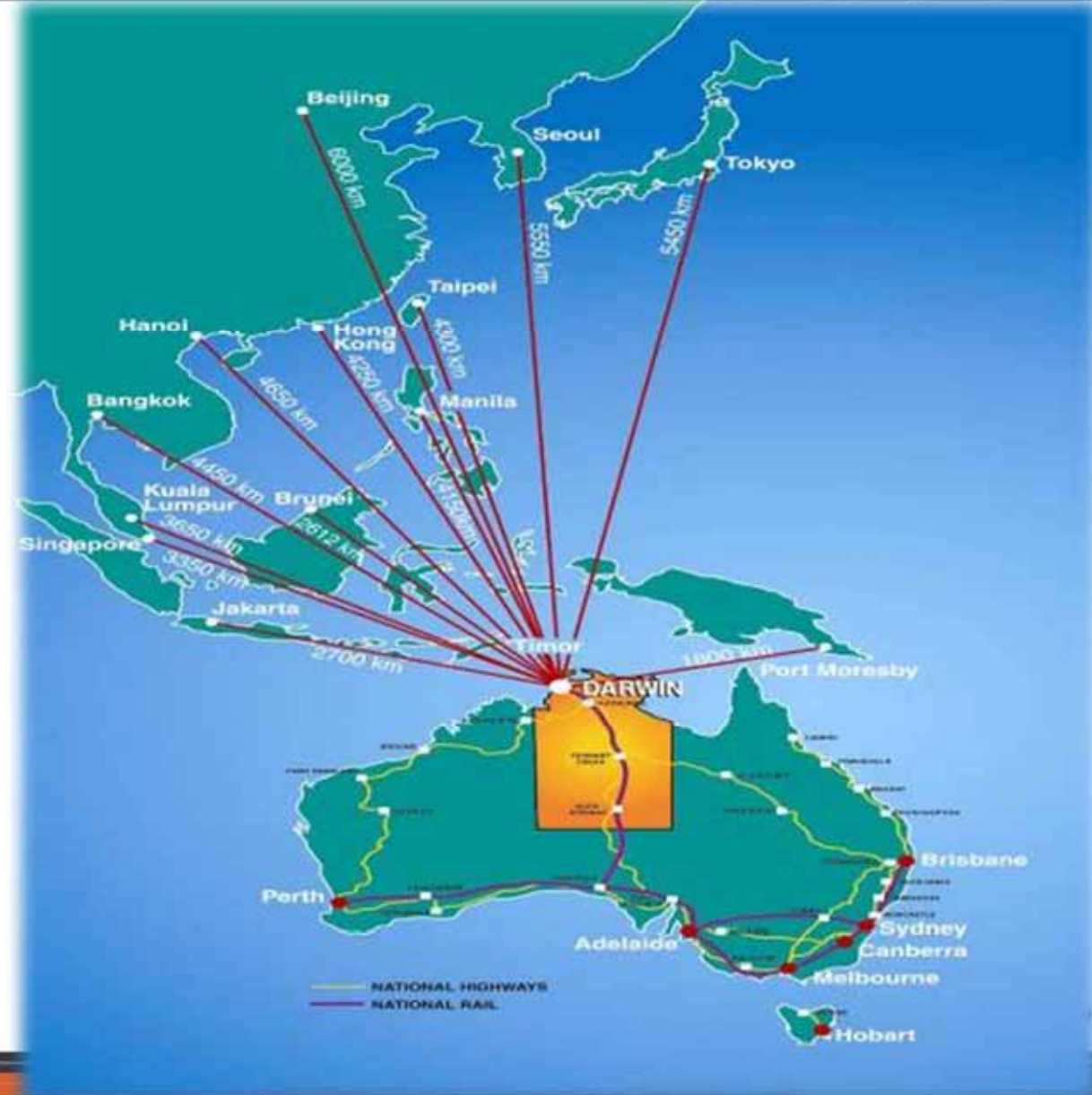


Northern Australia and ASEAN

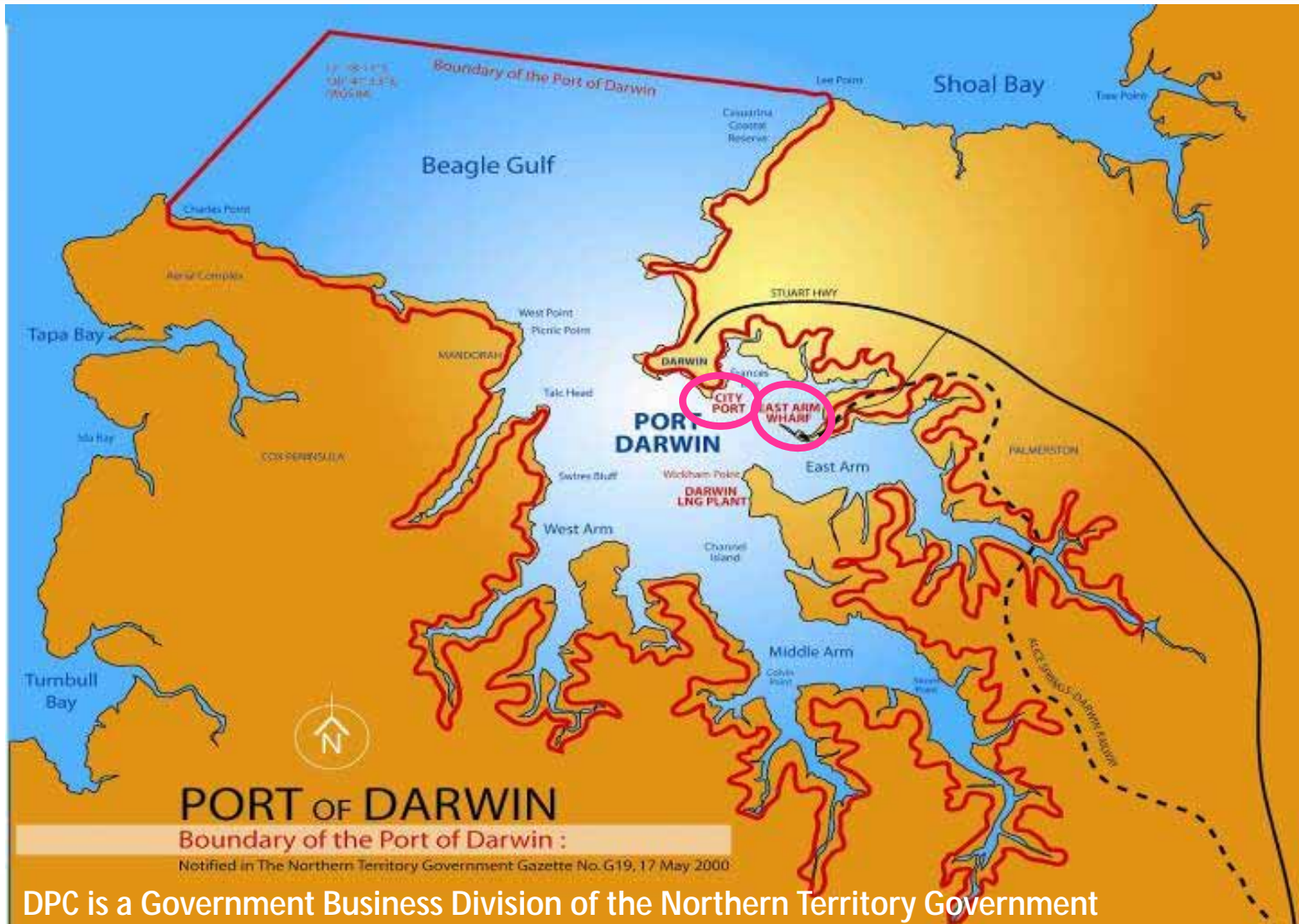
Northern Territory:

Population: 260,000

Growth: 6%



Port Of Darwin - Boundaries



DPC is a Government Business Division of the Northern Territory Government

Darwin Harbour:
1,000 km²

Sydney Harbour
(Port Jackson):
55 km²

DPC - Principal Trades

- Petroleum and other bulk liquids
- Dry bulk imports and export
- Offshore oil and gas rig services
- Livestock Exports
- Container and general cargo
- Cruise and naval vessels





DARWIN PORT CORPORATION

Crusie Ships





DARWIN PORT CORPORATION

LNG



East Arm Wharf



East Arm Logistics



DPC - Historical growth 2002/03 to 2012/13

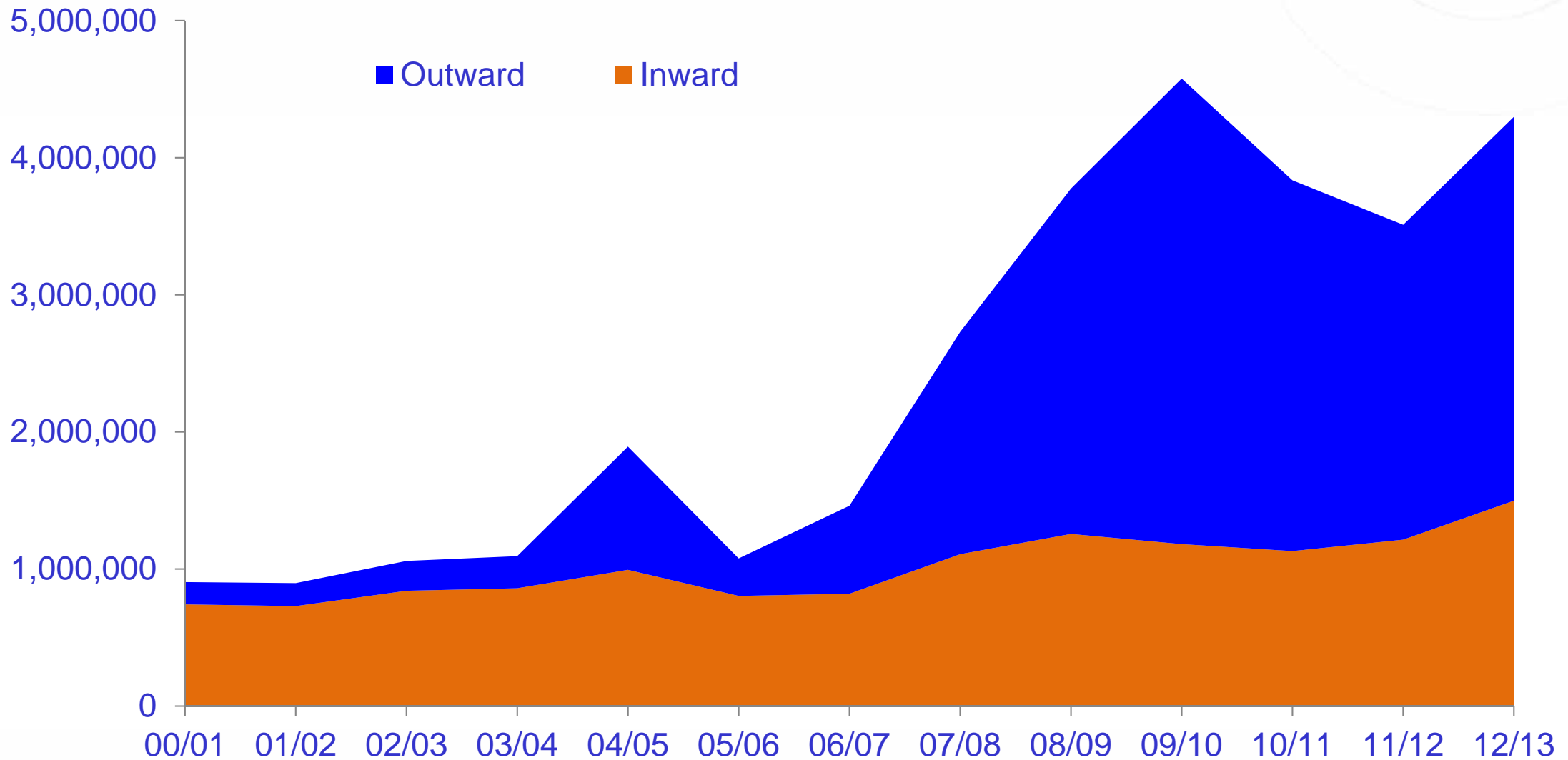
DPC has gone from predominately an importing port to now an exporting port

<i>Trade (tonnes)</i>	2002/03	2012/13	% Change	% Change Per Year
Import Tonnes	840,961	1,498,601	+78%	+8%
Export Tonnes	218,160	2,800,408	+1184%	+118%
Total Tonnes	1,059,121	4,299,009	+306%	+31%

Vessel calls

Trading Vessel Calls	808	2,765	+242%	+24%
-----------------------------	-----	-------	--------------	-------------

Managing 1) Peaks and troughs and 2) Short term vs long term





DARWIN PORT CORPORATION

Optimising For All

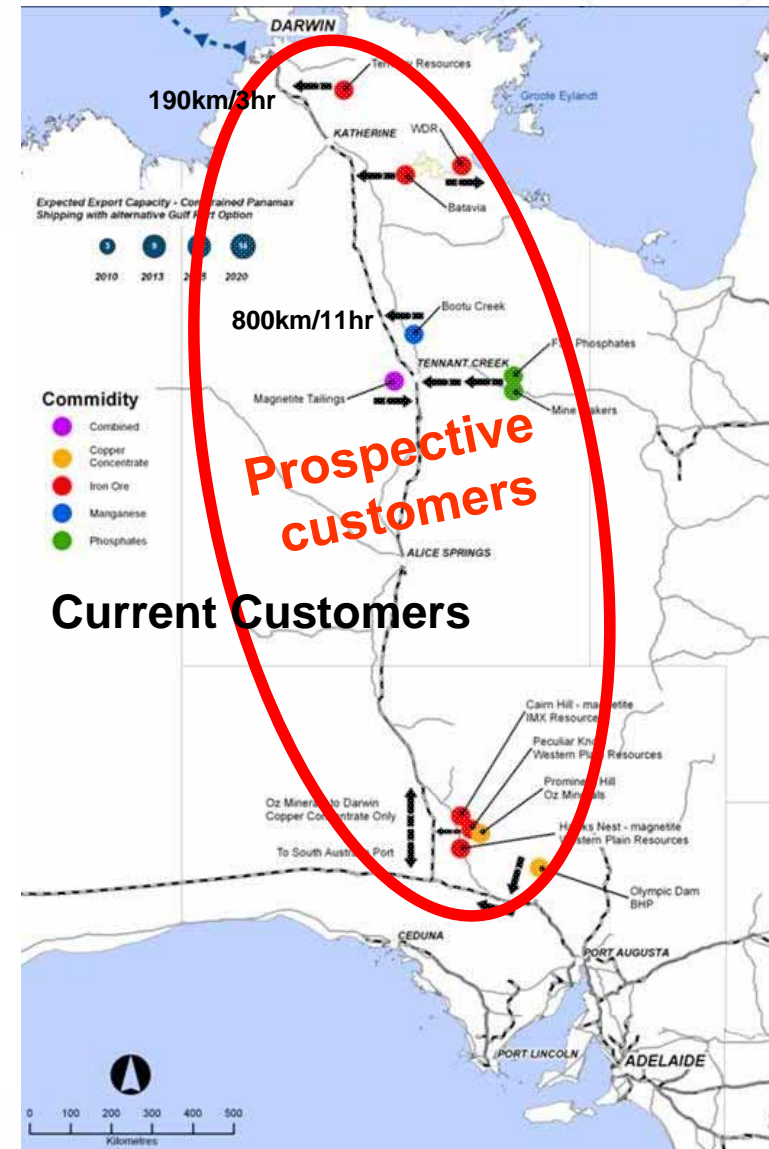


Potential Trade Expansion

- Iron Ore - 5 to 15 Mtpa
- Manganese Ore - 1 Mtpa
- Phosphates - 3 to 7 Mtpa
- Copper Concentrates - 2 Mtpa

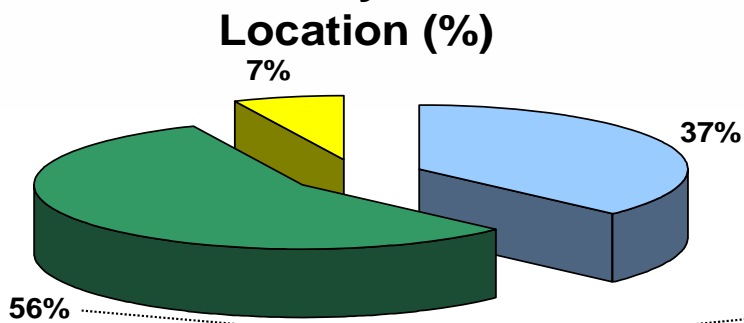
- Frozen Meat
- Sea food

- Fresh Fruit



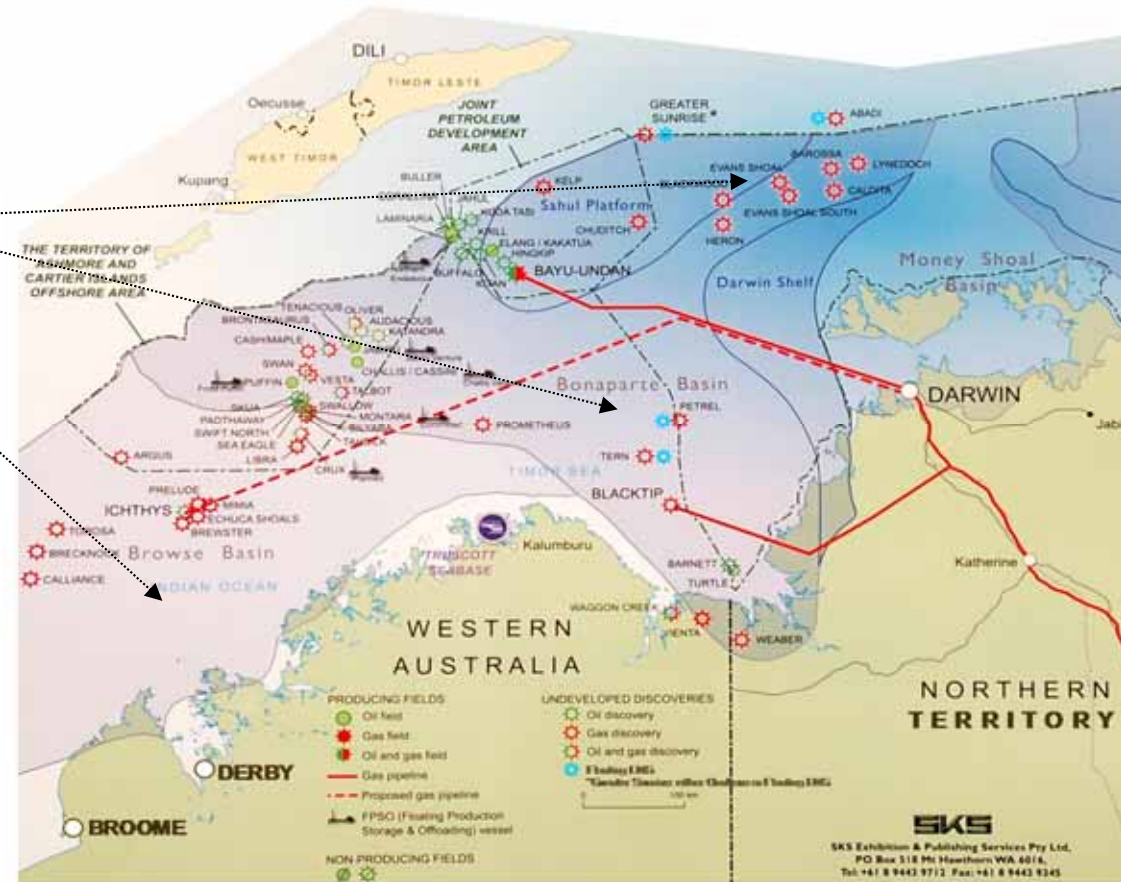
Darwin's Marine Supply Base potential business

Offshore Industry Production Volumes by Location (%)



Total = 18,441 millions of barrells of oil equivalent

- Bonaparte, Timor Sea and JPDA
- Browse Basin
- Currently Producing



Support

Shell Prelude:

Worlds largest Floating Structure



Offshore Facilities 7



DARWIN PORT CORPORATION

MSB Today





DARWIN PORT CORPORATION

Bladin Point Inpex Development



\$32b US Operational 2017



DARWIN PORT CORPORATION

Bladin Point Inpex Development





Dredging





DARWIN PORT CORPORATION

Dredging





DARWIN PORT CORPORATION

Current Works



Not All About Infrastructure



PORT of DARWIN - Australia's northern gateway of choice

Thank you

