



**Royal
HaskoningDHV**
Enhancing Society Together

13th ASEAN Ports & Shipping 2015

Engineering world-class ports

David Dudok van Heel
25 June 2015

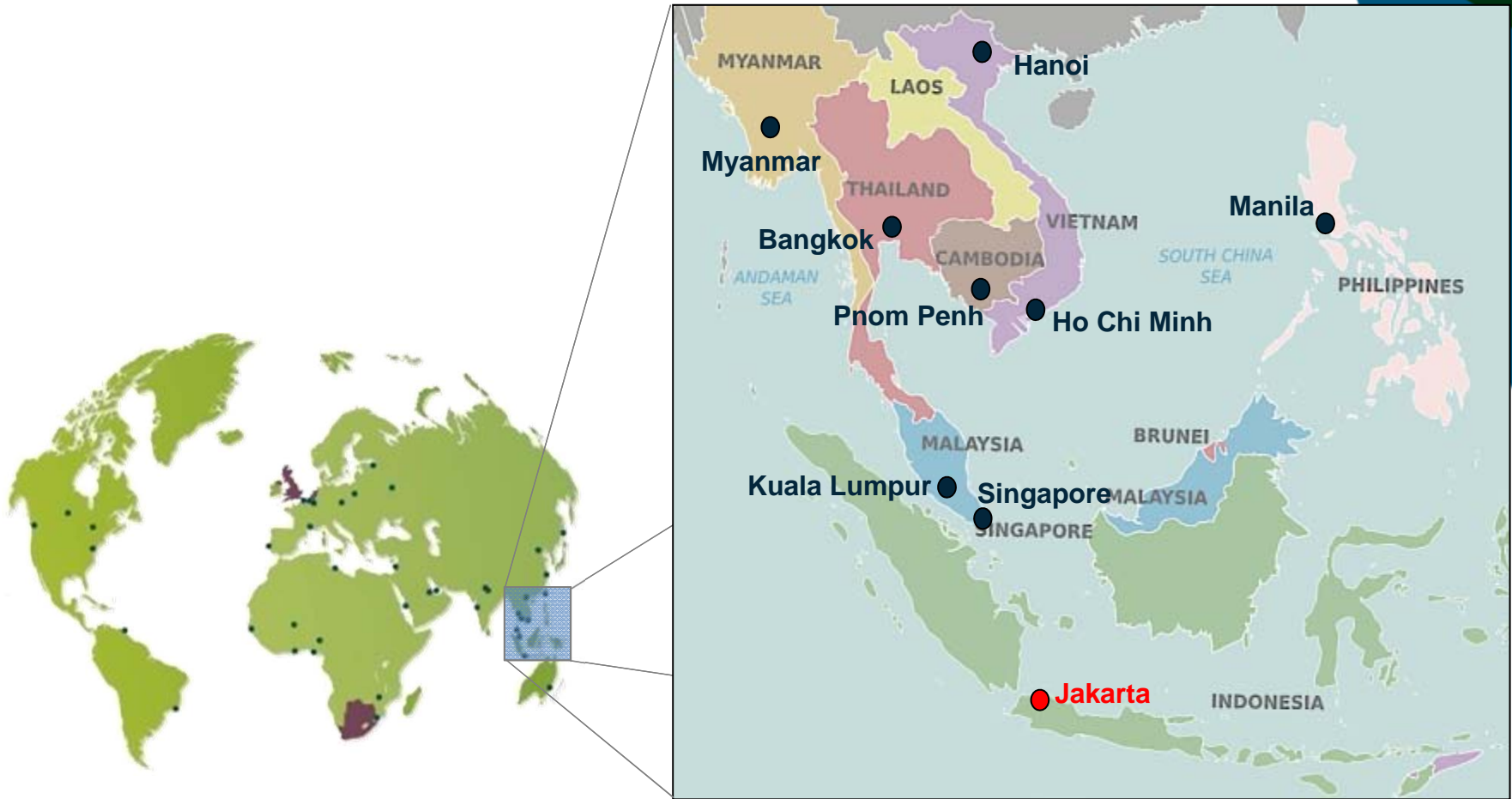


Royal HaskoningDHV

- Global consultancy & engineering firm
- Established in 1881
- Top 3 Maritime Sector
- More than 7,000 professional staff
- More than 100 offices worldwide

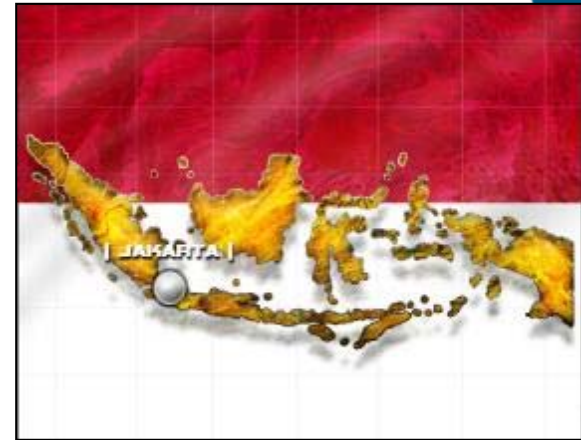


Royal HaskoningDHV in SE-Asia

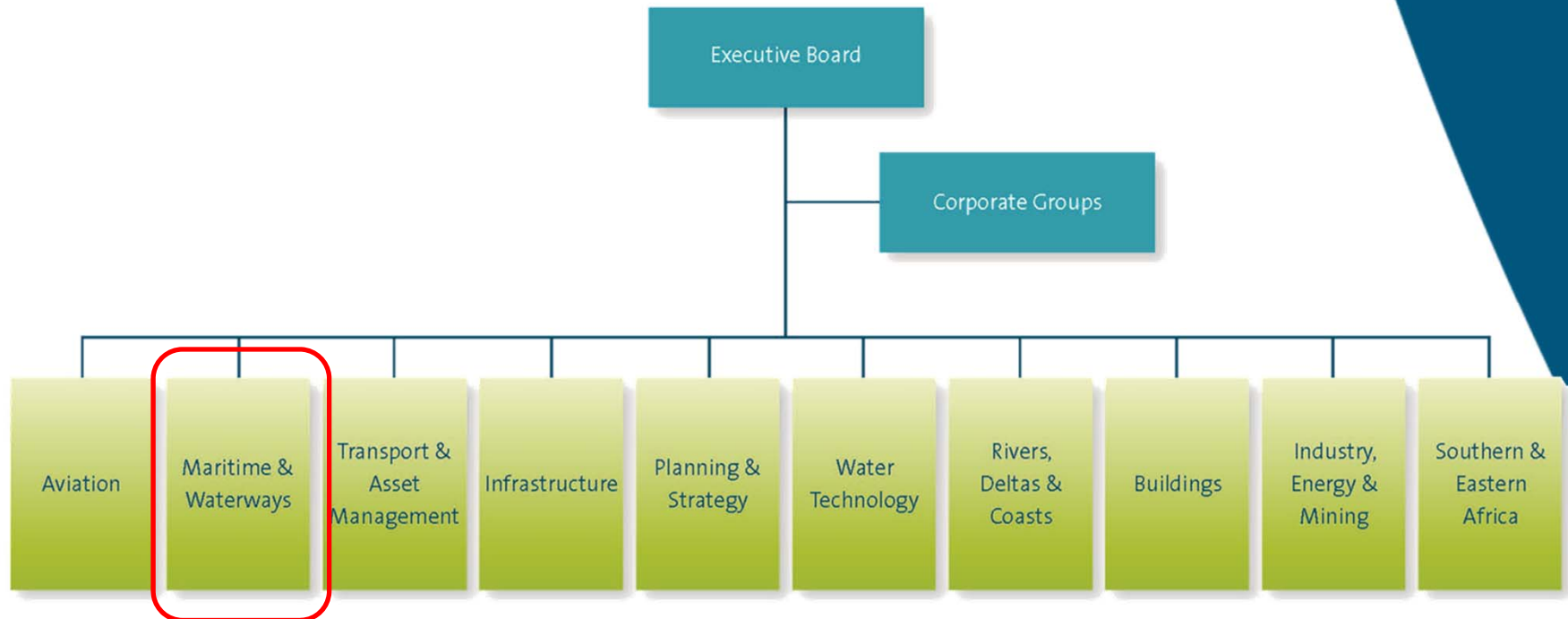


Royal HaskoningDHV in Indonesia

- Established in 1974
- Operating under PT Haskoning Indonesia
- 300+ professionals
- Perfect balance of local and international experience



Royal HaskoningDHV – Company Structure



Maritime & Waterways - Sectors

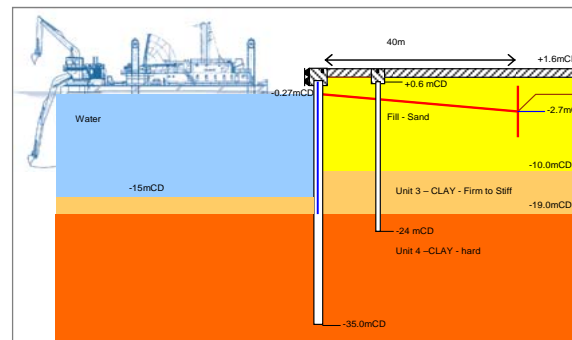
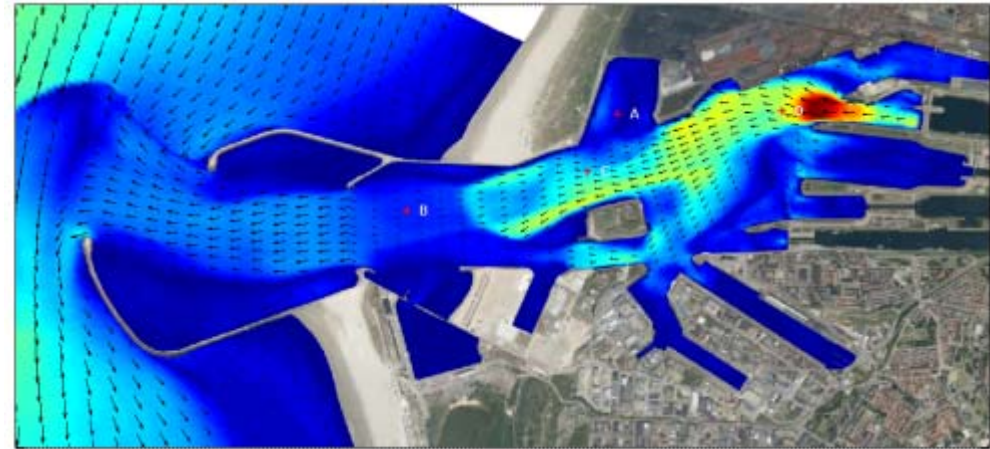
- Container Terminals
- Liquid & Dry Bulk
- General Cargo
- Shipyards & Dockyards
- Cruise Terminals & Marinas
- Residential & Commercial



Maritime & Waterways - Services

All aspects of projects
(one stop shop)

- Market Studies & Financial modeling
- Master Planning
- Feasibility studies
- Simulations & Modeling
- Concept & Detailed Design
- Construction Supervision
- Project Management



Engineering World Class Ports



Market potential

-

-

-

-

-

-

-

-

1. Current situation
2. Developments
3. Forecasting



Market potential

Location Study

-

-

-

-

-

-

-

- Site Characteristics
- Environment
- Hinterland connections



Market potential

Location Study

Port User Requirements

-

-

-

-

-

-

- Shipping
- Terminals & equipment
- Infrastructure capacity



Market potential

Location Study

Port User Requirements

Port Layout Concept

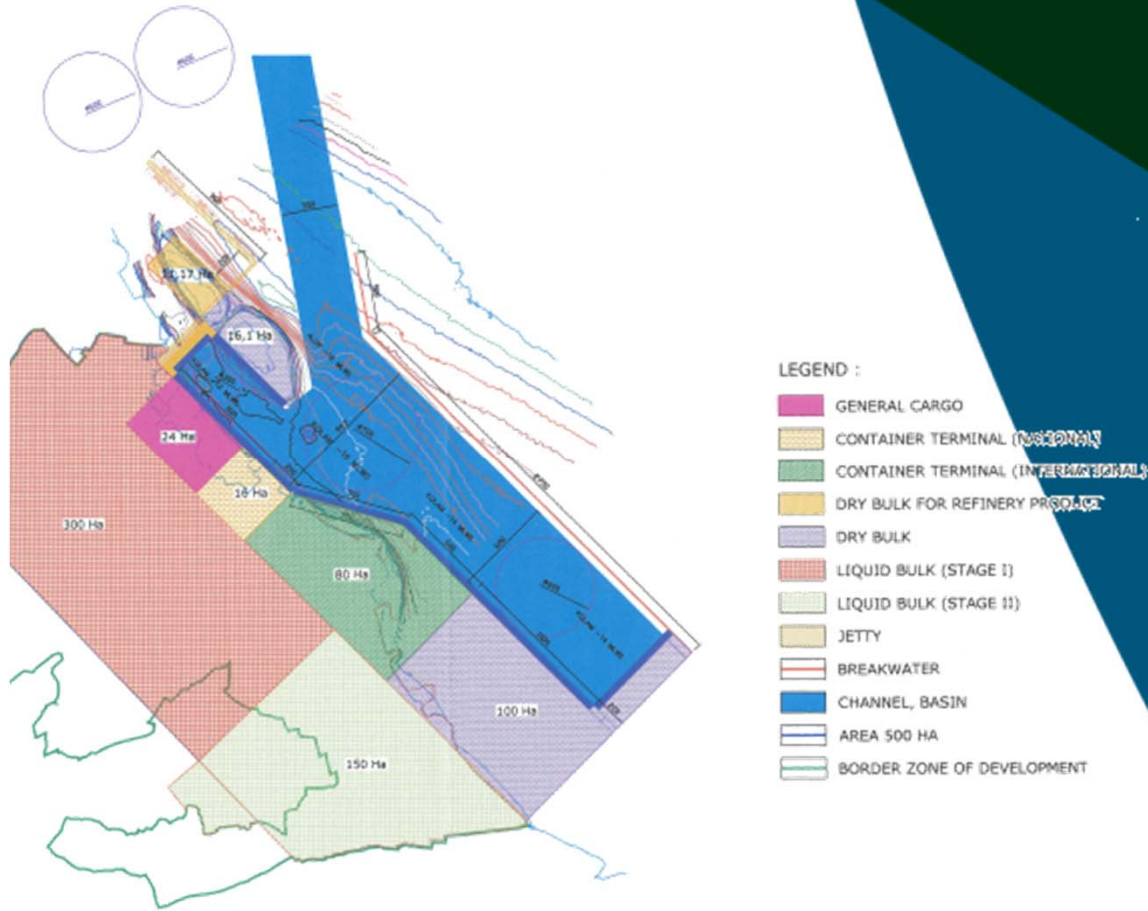
-

-

-

-

-



Market potential

Location Study

Port User Requirements

Port Layout Concept

Preliminary Design Key Structures

-

-

-

-

➤ Dredging & Reclamation

➤ Quay walls & Jetties

➤ Breakwaters & Dams



Market potential

Location Study

Port User Requirements

Port Layout Concept

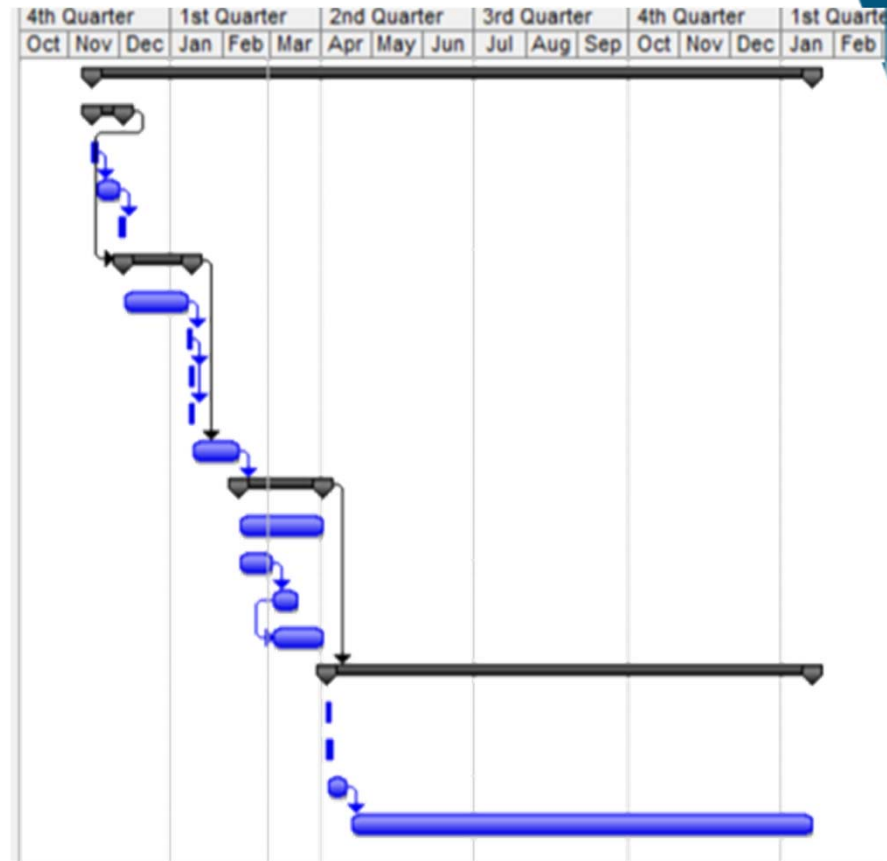
Preliminary Design Key Structures

Implementation Schedule

-

-

-



Market potential

Location Study

Port User Requirements

Port Layout Concept

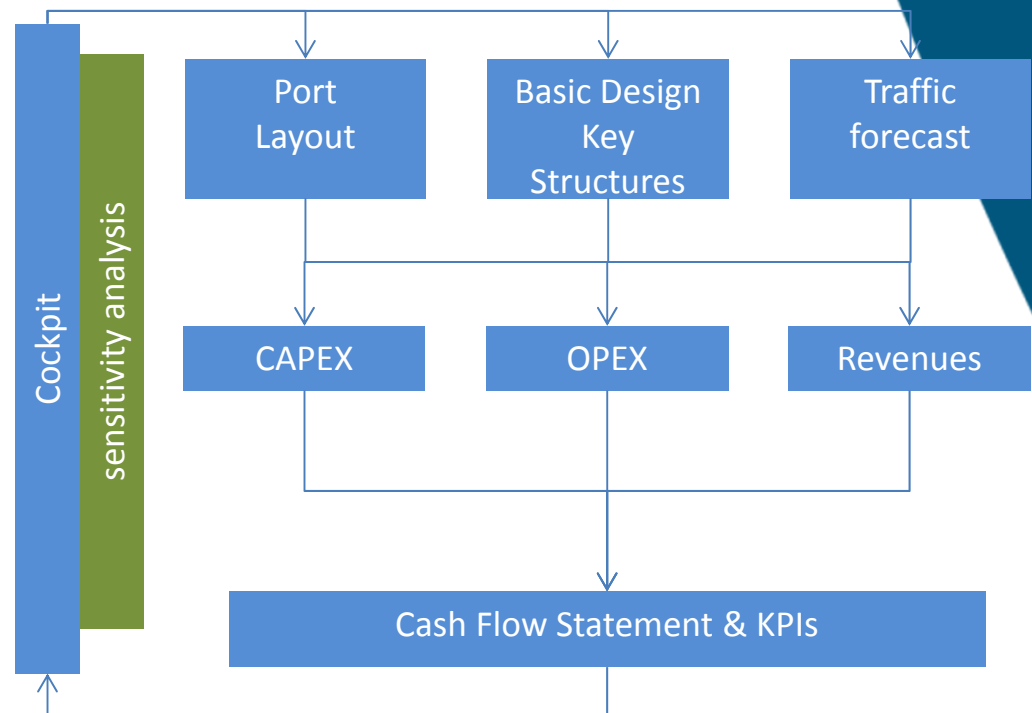
Preliminary Design Key Structures

Implementation Schedule

Financial Model

-

-



Market potential

Location Study

Port User Requirements

Port Layout Concept

Preliminary Design Key Structures

Implementation Schedule

Financial Model

Port Management Model

-

Port Management Models

Type	Infrastructure	Superstructure	Operations	Other services
Public Service Port	Public	Public	Public	Public
Tool Port	Public	Public	Private	Public/Private
Landlord Port	Public	Private	Private	Public/Private
Private Port	Private	Private	Private	Private

Market potential

Location Study

Port User Requirements

Port Layout Concept

Preliminary Design Key Structures

Implementation Schedule

Financial Model

Port Management Model

Strategic Action Plan

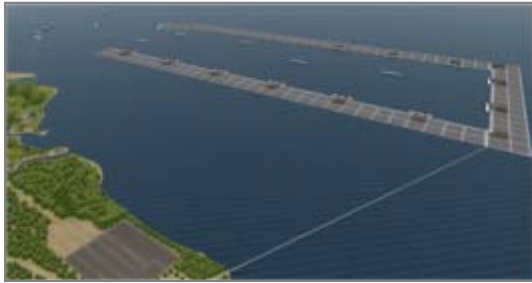
- Port Development plan
- Identification of partners
- Contract and Funding structure
- Bankable Document



RHDHV – Port Projects Indonesia

North Sumatra – Kuala Tanjung

- Market Assessment
- Port Master Planning
- Financial Analysis
- Strategic Action Plan



Jakarta – North Kalibaru

- Construction Supervision



Surabaya – Teluk Lamong

- Market Assessment
- Port Master Planning
- Financial Analysis
- Strategic Action Plan



Image Landsat
Data SIO, NOAA, U.S. Navy, NGA, GEBCO
© 2015 Mapabc.com
US Dept of State Geographer

Google earth

Imagery Date: 4/10/2013 5°15'27.64" N 108°48'36.31" E elev -95 m eye alt 7392.83 km