

LIVORNO PORT AUTHORITY

4TH BLACK SEA PORTS & SHIPPING
2015

28 - 29 May 2015
Istanbul, Turkey



Europa

LIVORNO

© 2010 Europa Technologies
US Dept of State Geographer
© 2010 Tele Atlas
© 2010 Google

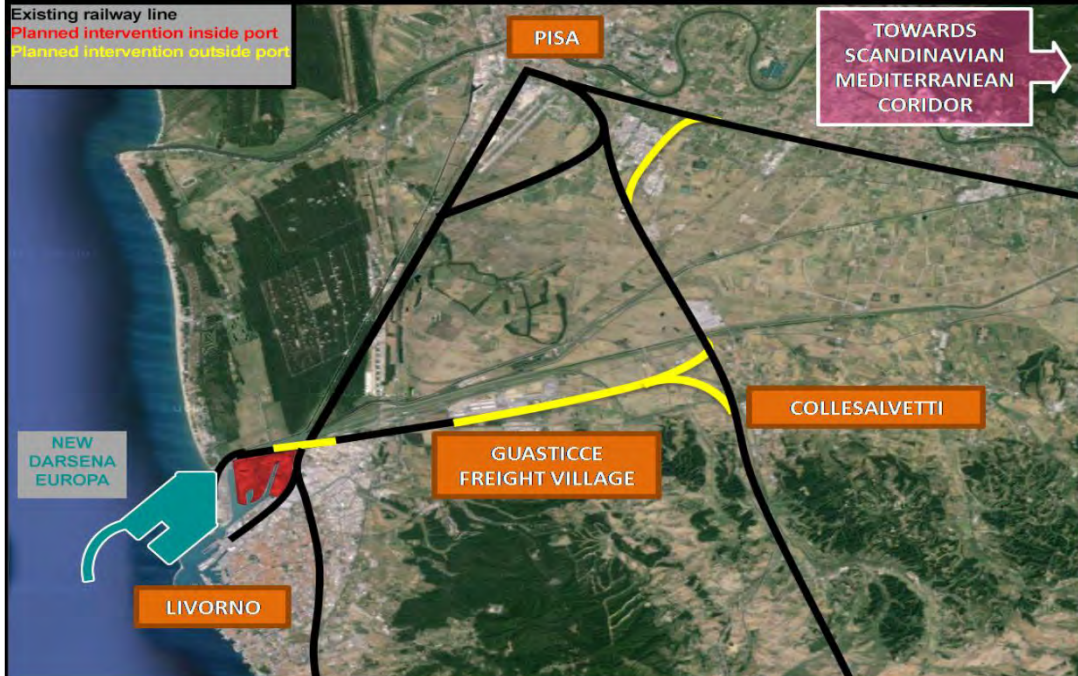
Google

42°11'59.34" N 18°29'32.27" E -18 m elev

3668.68 km Alt

GLOBAL PROJECT: "LIVORNO GATEWAY PROJECT"

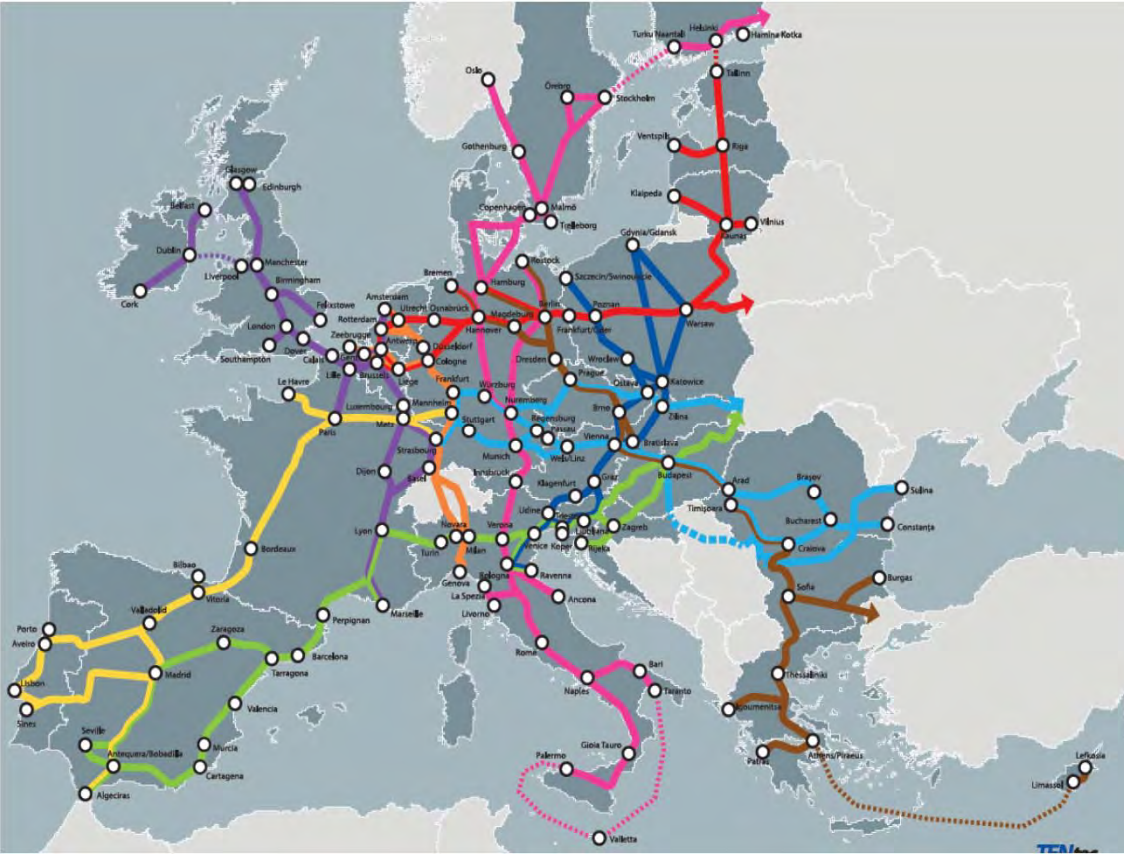
Existing railway line
 Planned intervention inside port
 Planned intervention outside port



Regional Rail Network



Corridor Scandinavian Mediterranean



Livorno Port Gateway aims to connect efficiently the maritime cluster with the Scandinavian-Mediterranean Corridor of the TEN-T Core Network



PORT – FREIGHT VILLAGE: THE LOGISTIC SYSTEM

- LPA HOLDS 9% OF SHARES
- FV TO FUEL INTERMODAL SERVICES TO/FROM HINTERLAND
 - EXTENSION OF CUSTOMS BOUNDARIES
 - RAIL INTEGRATION PORT-FV-HINTERLAND
- DEVELOPMENT OF RAIL SERVICES WITH MTO FUNCTIONS
- SPECIAL AREAS FOR LOGISTIC VALUE ADDED SERVICES (CHEMICALS,COLD)



Freight Village

National Rail Network

Calambrone Rail Station

40 MILLION EURO

TERMINAL CONTAINER

----- Railroad today

----- New Project Railroad



© 2013 Google

THE RAIL PORT



Rail Access from Coast to Corridor 'RACCORDO'

2013-IT-91033-S

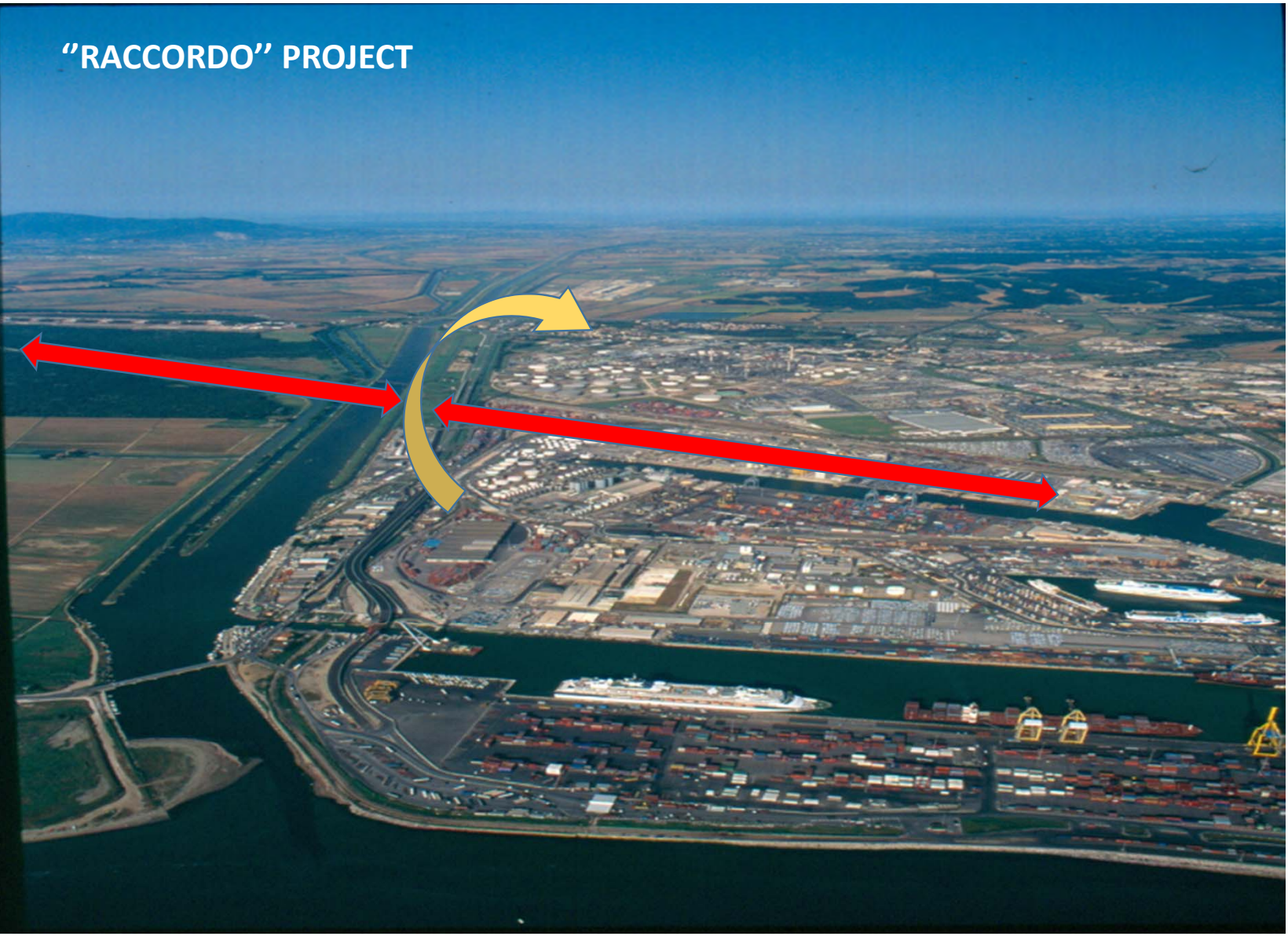
P1 - MARITIME	
Member States involved: Italy	
Applicant/Coordinator: Autorità Portuale di Livorno	
Requested funding	
Total eligible costs	€1,357,403
TEN-T requested funding:	€678,701.50
TEN-T funding:	50%
Recommended funding	
Total eligible costs:	€1,357,403
TEN-T recommended funding:	€678,701.50
TEN-T funding:	50%



Evaluation remarks

The proposed Action is very relevant to the Call. It is mature since the project has already received formal approval at national and regional level. The impact is high as the proposed Action will have a positive impact as a decision-making tool. The quality of the proposal is very good.

"RACCORDO" PROJECT



- DIRECT LINK PORT-FREIGHT VILLAGE
- CROSSING OF GENOA-ROME NATIONAL RAIL NETWORK LINE
- MAKING THE ROUTING TO THE SCAN-MED CORRIDOR QUICKIER

ERICA –Easy Railway Infrastructure and Customs Access (2014-IT-TM-0134-M) Project

February 24, 2015

CEF (Connecting Europe Facility) Multiannual Programme Call for Proposals 2014 – Funding Objective 01
(removing bottlenecks and filling missing links)

Livorno Port Authority (Coordinator) €5.036.945,09
Tuscany Region €15.961.216,56



**SUPPORTED BY
ITALIAN
NATIONAL
RAILWAYS**

Total budget €32.508.093,77

European co-funding €11.509.932,12

Deadline: December 31, 2019

ERICA –Easy Railway Infrastructure and Customs Access (2014-IT-TM-0134-M)

München – Wörgl	Rail	Access to Brenner Base tunnel and cross-border section: studies
Brenner Base Tunnel	Rail	Studies and works
Fortezza - Verona	Rail	Studies and works
Napoli - Bari	Rail	Studies and works
Napoli – Reggio Calabria	Rail	Upgrading
Verona – Bologna	Rail	Upgrading ongoing
Ancona, Napoli, Bari, La Spezia, Livorno	Ports	Port interconnections, (further) development of multimodal platforms
Messina - Catania – Augusta/Palermo	Rail	Upgrading (remaining sections)
Palermo/Taranto - Valletta/Marsaxlokk	Ports, MoS	Port interconnections
Valletta - Marsaxlokk	Port, airport	Upgrading of modal interconnection, including Marsaxlokk-Luqa-Valletta
Bologna – Ancona	Rail	Upgrading

Inside the port

Outside the port

MORE EFFICIENT INTERMODAL TRANSPORT TO/FROM LIVORNO
MORE REVENUES FOR THE INFRASTRUCTURE MANAGER (RFI)
REDUCTION OF ROAD TRAFFIC FOR THE BENEFIT OF RAIL TRAFFIC
REDUCTION OF AIR POLLUTION AND ROAD ACCIDENTS
GROWTH OF EMPLOYMENT (+ 10%)

