

Namibian Ports Authority



“NAMPORT CREATING CAPACITY FOR THE REGION”

By ELIAS MWENYO

DURBAN – 23 OCTOBER 2014



CONTENTS



1. Namport and The Market Environment
2. Link to National Strategy
3. Growth
4. Ports and Hinterland Links
5. Successes
6. Major Projects

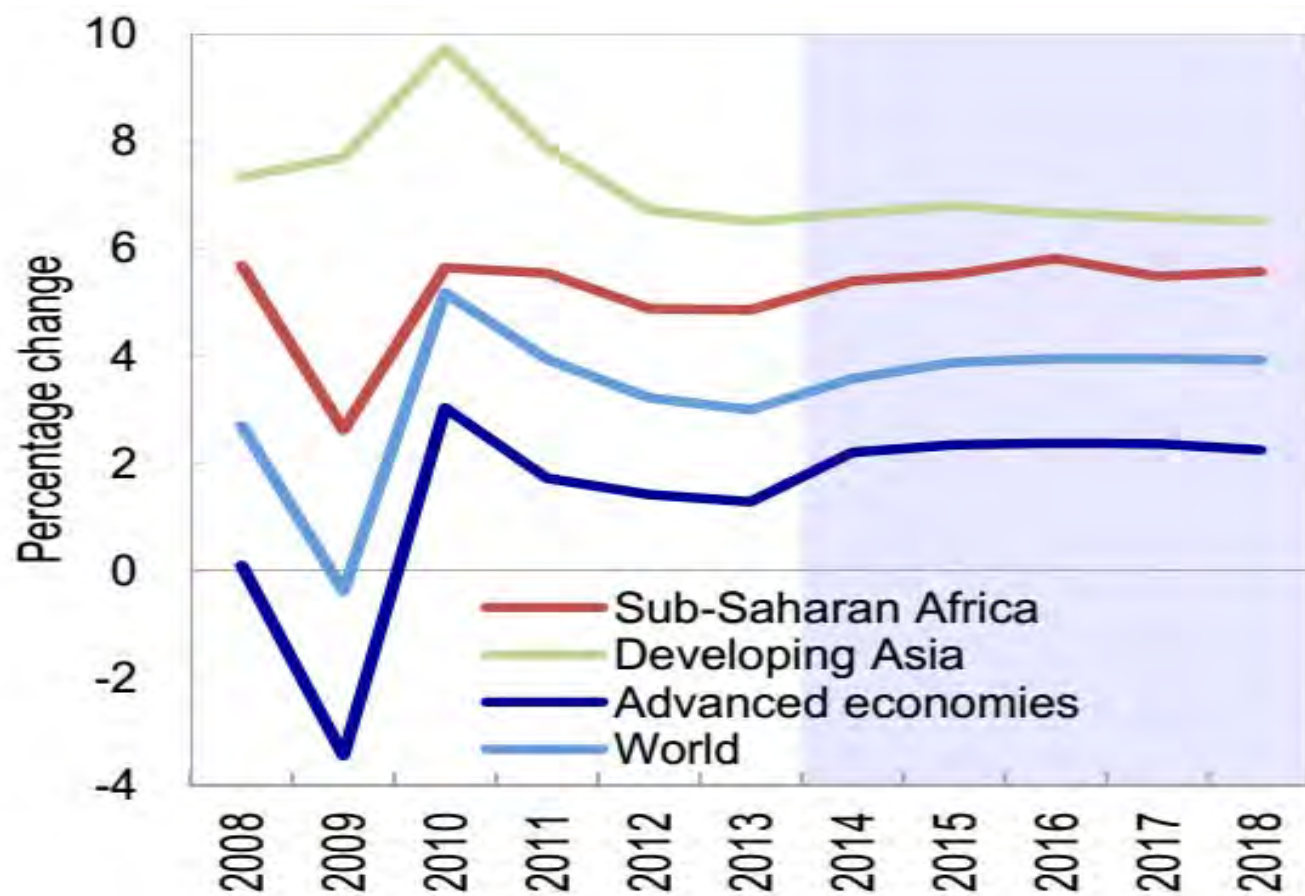
NAMPORT AND THE MARKET ENVIRONMENT

Map 4.1 Busy seafaring in the North, little landfall in the South
Intensity of shipping routes during one year beginning October 2004



Source: Data from the World Meteorological Organization (WMO) Voluntary Observing Ships' (VOS) scheme, processed by Halpern and others (2008).
Note: Container ports shown are the 20 largest by TEU of total containers handled in 2005 (Friedhoff and Zachoval 2005).

Sub-Saharan Africa Projected Real GDP Growth



Source: IMF, World Economic Outlook database.

NDP 4 GOALS



NDP4 GOALS

Economic Growth

Employment Creation

Increased Income Equality

Priority Areas

Economic Priorities

Basic Enablers

Strategic Areas

- Institutional Environment
- Education and Skills
- Health
- Reducing Extreme Poverty
- Public Infrastructure

- Logistics
- Tourism
- Manufacturing
- Agriculture

DO 6 (Logistics) : By 2017, the volume in cargo handling and rail-transported cargo is double that of 2012, and the Port of Walvis Bay has become the preferred African West Coast port and logistics corridor for southern and central African logistics operations

PROGRAMMES TO ACHIEVE LOGISTICS OUTCOME 6



*Walvis Bay
Infrastructure
Development*

*Infrastructure
Capacity
Creation*

*Port
Automation*

*Port
Capacity
Building*

*Port
PPP
Promotion*

- New Container Terminal

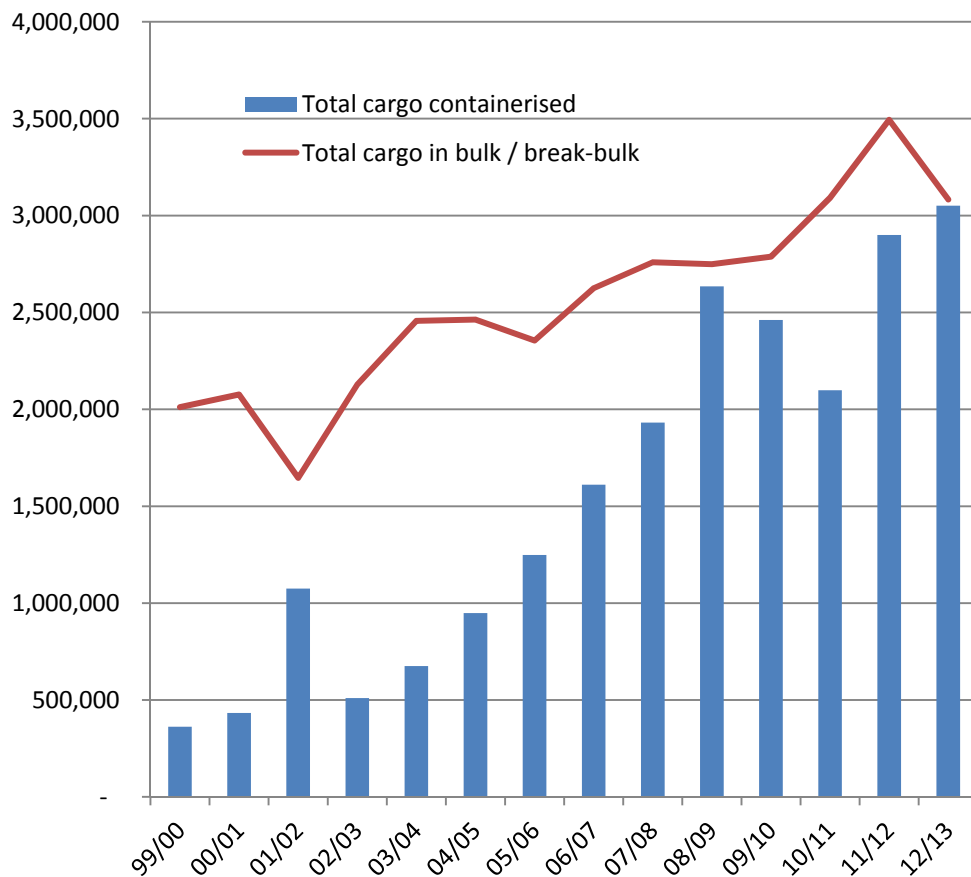
- Walvis Bay SADC Gateway
- Luderitz Deep Water Port Area Angra Point

- NAVIS TOS
- Port Community System

- Cargo Ops and Seafarer Training

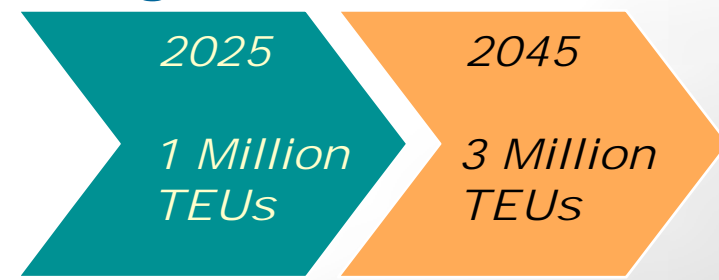
- Ship Repair
- Waterfront
- Car Terminal
- Bulk Terminal SADC Gateway
- Deep water port area Luderitz

Namport Volume Growth

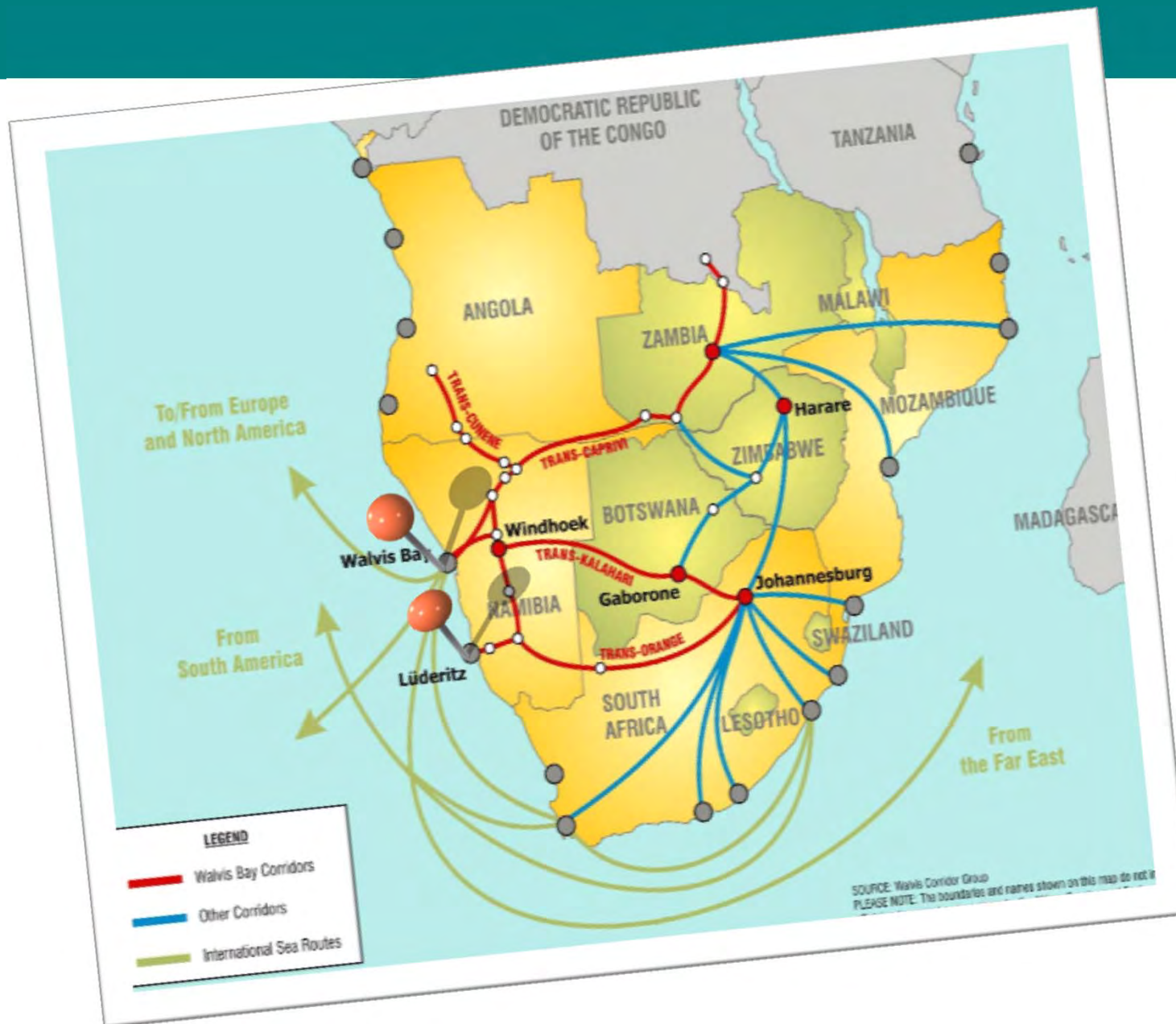


Containers
contribute 41%
of Total
Revenue

TEU growth forecast



Our Ports & Hinterland Links



Our successes



- Total Assets grew from 1.5 Billion NAD in 2008 to 2.8 Billion NAD in 2013
- Cargo Tonnage handled grew from 4.6 MT in 2008 to 6.5 MT in 2013
- TEUs handled grew from 183,000 in 2008 to 304,000 in 2013
- Vehicle Imports through Walvis Bay increased from 224,000MT in 2008 to 357,000MT in 2013
- Provide Dry Port land for Zambia, Zimbabwe and Botswana
- Introducing a 24/7 service to customers in certain key service areas

Our successes



- **Maximised existing capacity at Walvis Bay Port**
 - Increased TEU capacity from 250,000 to 355,000 TEUs
 - Increased draft at Berths 1 to 3 from -12.8 m to -14 m
 - Enabled Berths 1 to 3 to handle 4500 TEU container vessels – berth 2 x 250 m vessels at same time
 - Relocated a shed on the quay to provide additional stacking space
- **Increasing future container handling capacity at Walvis Bay**
 - Commenced building a New Container Terminal with capacity of 750,000 TEUs p.a. with 16m draft and 600 m quay length

Our Successes !



Increased Ship Repair / Dry Docking Capacity

- Current Syncrolift (dry-dock) has lifting capacity of 2000 t
- In 2006, established floating dock with 8000 t lifting capacity in a PPP
- In 2008, second floating dock commissioned
- In 2013, third floating dock – lifting capacity of 15,000 t – commissioned
- In 2014 awarded tender to establish a third ship repair facility in Walvis Bay



Our Successes !



Awards and Recognition

- Old Mutual Top Performing SOE in Namibia – 2010
- Best Port Operator or Terminal in Africa Award – 2012
- Africa Ports Evolution Excellence Award – 2013
- Climbed from position 102 in 2004 to position 70 in 2014 on the Unctad Liner Shipping Connectivity Index

Namport Major Projects



Medium-Term Projects – Port of Walvis Bay

NEW CONTAINER TERMINAL (2017)

- 40 HA
- 600 m quay length,
- 750,000 TEU p.a.
- NAD 3.9 billion cost
- Cruise Terminal
- EPC Contract (Construction)
commenced in May 2014



Medium-Term Projects – Port of Lüderitz

- Cold Storage Facility as a PPP Project (2015 / 2016)
- New Port Rail Network (2015)
- Increase Reefer Points to 200 (2015)
- Rehabilitation of Luderitz Boatyard (2015)



Long-Term Projects

PORT OF WALVIS BAY SADC GATEWAY

- 1330 HA of port land
- 10,000 m of quay walls & jetties
- 30 large berths
- Coal Terminal connected to Trans-Kalahari Railway

Phase 1 : Tanker Jetty (2016)

Government Project

Phase 2 : Multi-purpose dry bulk terminal - 30 Million tonnes p.a

Phase 3 : Coal Terminal

5 berths – 65 million tons per annum

30 Berths



Trans-Kalahari Railway Line



Mining



**Commissioning
2019 to 2021**

**CAPEX approx
US\$ 11 billion**

**+ another
US\$ 30 billion in
OPEX over 30 years**



Ports & Shipping



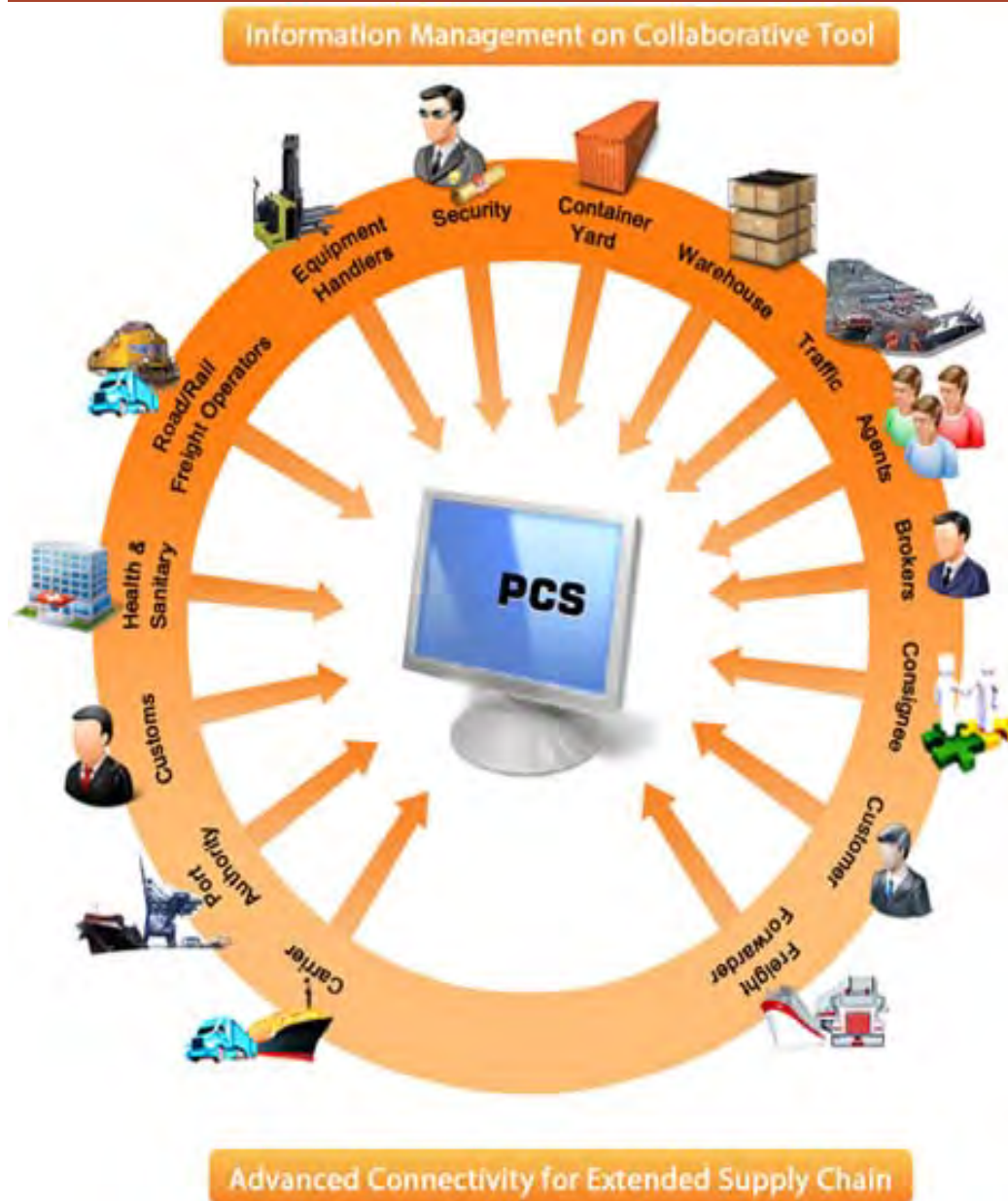
Illustration from: <http://www.quintiq.com/industries/mining.html>

Port of Walvis Bay Waterfront and Marina Development

- 5 HA
- Adjacent and connected to the local authority's waterfront development
- Feasibility Study
- Tender for Developer will be issued early 2015

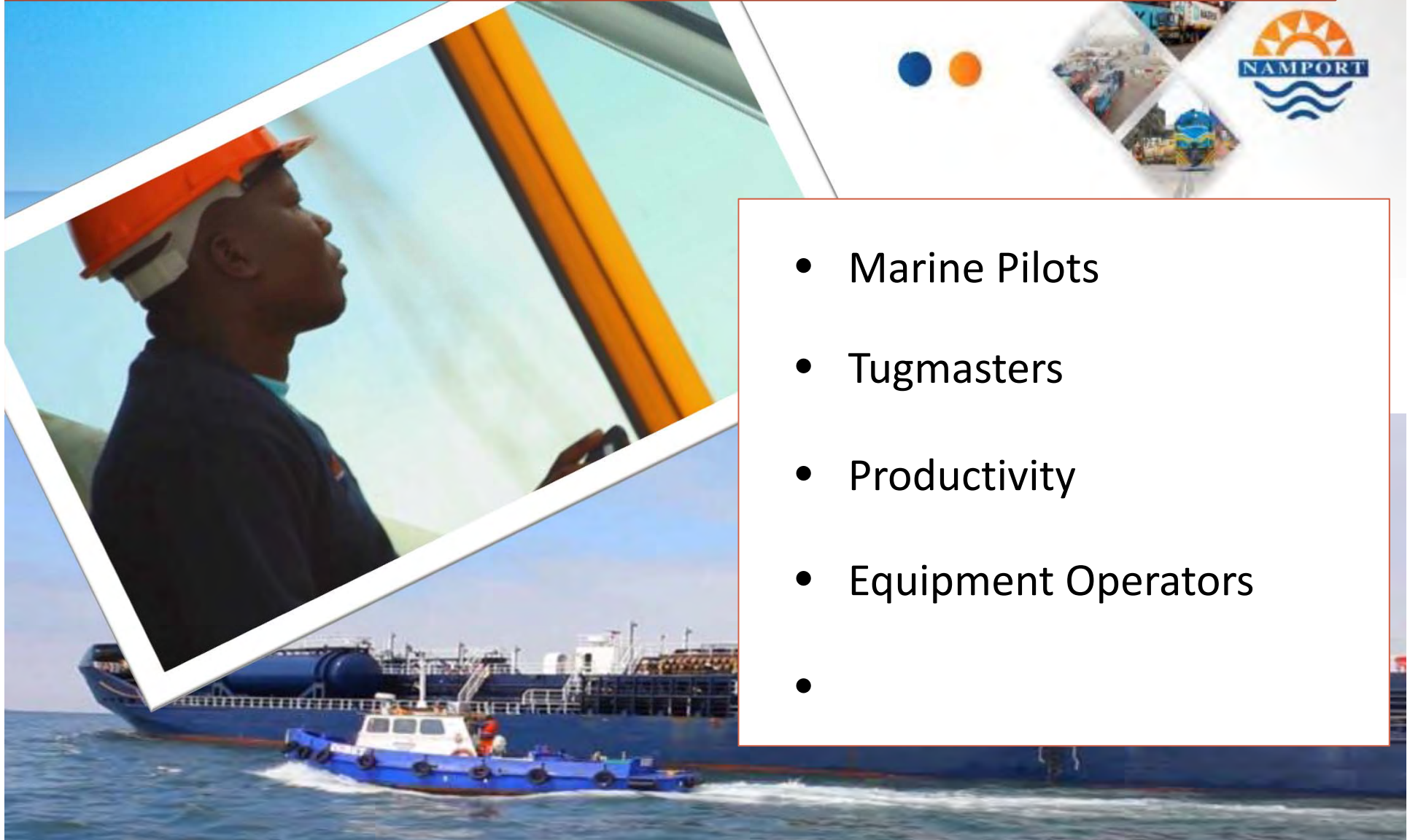


Port Community System



- Will issue tender for Port Automation Consulting Services in 2014
- Implementation Partner to be appointed early 2015

Port Capacity Building Programme



- Marine Pilots
- Tugmasters
- Productivity
- Equipment Operators
-

Port of Lüderitz Long-Term Projects

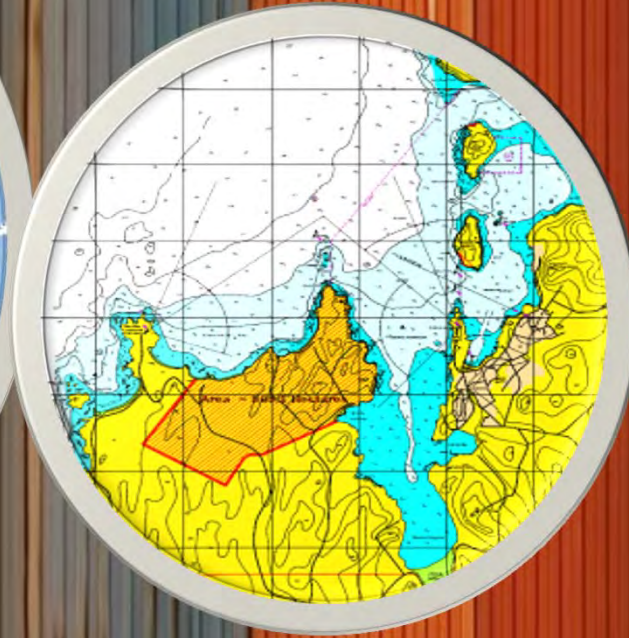
NEW DEEP WATER PORT AREA AT ANGRA POINT

PPP PROJECT

- 886 HA
- Handling of iron ore, manganese, coal, phosphate
- Heavy-haul rail connection possibly to Northern Cape (South Africa) – Hotazel manganese mines)



A Porthole view of our future



THANK YOU