

11th TRANS Middle East
DOHA 2015



Cloud Base management of integrated Supply Chain programs

Paul Stevens

ANHAM



We are a leading global program management organisation working throughout the Middle East and North Africa ("MENA"), Central Asia, and Europe.

Headquartered in Dubai, UAE, ANHAM has international offices that specialize in providing turn key solutions , business initiatives, projects, and investments across diverse regions of the globe.

Key Business Programs



PRIME VENDOR Food Supply Iraq, Kuwait , Jordan
(\$2.16 – \$6.47 Billion)

Technical Equipment Maintenance – Afghanistan
(\$182 Million)

Host Nation Trucking - Afghanistan
(\$180 Million)

Vehicle Maintenance - Iraq
(\$151 Million)



Our Cloud Challenge



Customer: US Defense Logistics Agency
Objective: full-line food and non-food distribution and support to Department of Defense customers in Afghanistan



“This represents the most complex wartime food service transition DLA Troop Support employees have overseen“

Army Brig. Gen. Steven Shapiro

“Afghanistan is one of the most difficult environments in the world to support logistically“

DLA Troop Support Subsistence
Deputy Director Tom Daley



More than 140 locations
66 months indefinite food delivery

The System that we needed

Challenges

Contractual Obligations:

The customer needs to monitor the delivery of each ordered item throughout the delivery path, and know its location, distance to destination and estimated time of arrival

None of the In-Transit Visibility Systems evaluated provided item-level visibility

Environmental:

Our experience in Afghanistan, Iraq and Kuwait indicated that the transponders are seriously being tampered with, most of the times by the drivers.

The extreme conditions of Afghanistan with temperatures ranging from - 15 to + 49 degrees Centigrade are severe to equipment.

Commercial:

Small Mission Monitoring Teams

Small budgets for air time – longer reporting time

Operational:

Multiple ANHAM subcontractors - each of them signing a direct agreement with the ITV provider

Some of the subcontractors wanted to keep existing transponders

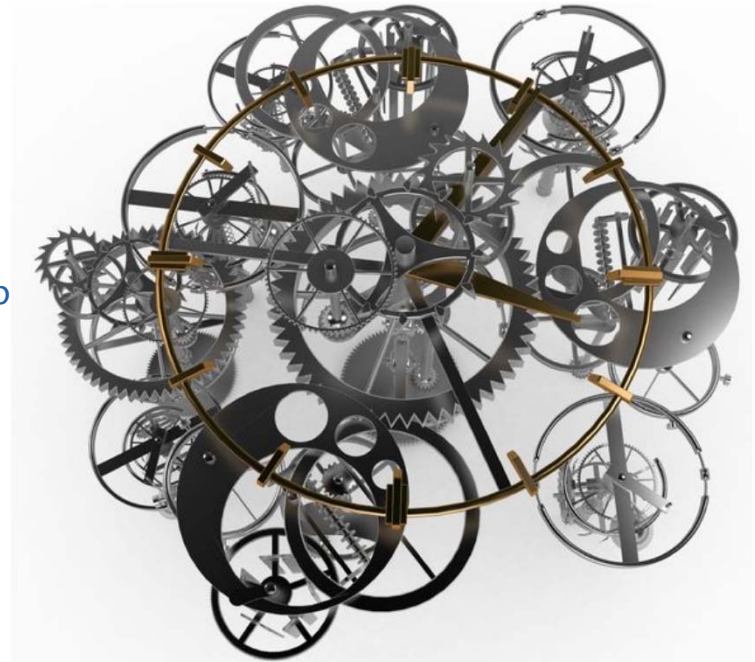
Variable demand during various phases of the contract execution



The System that we needed

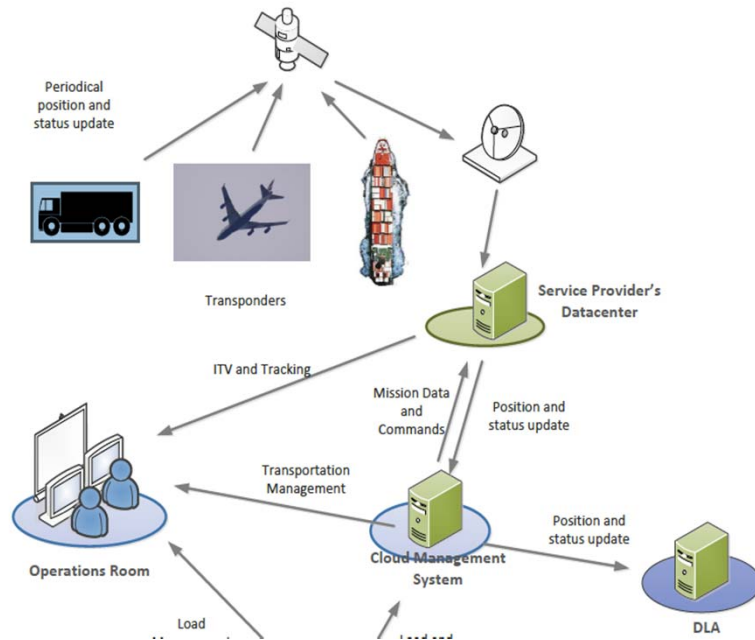
The supply chain Monitoring System solution needed to combine:

1. Field-proven hardware that would resist the climatic conditions of operational conditions specific to the contract
2. Technical solution that would allow subcontractors work with existing hardware if wanted so
3. Services that would include project management, implementation, 24/7 support
4. Supply chain arrangements for quick mobilization and start up
5. Commercial governance model with uniform conditions for all subcontractors
6. Software platform that would provide item-level visibility and require a small team to operate



The Program Management System that we needed

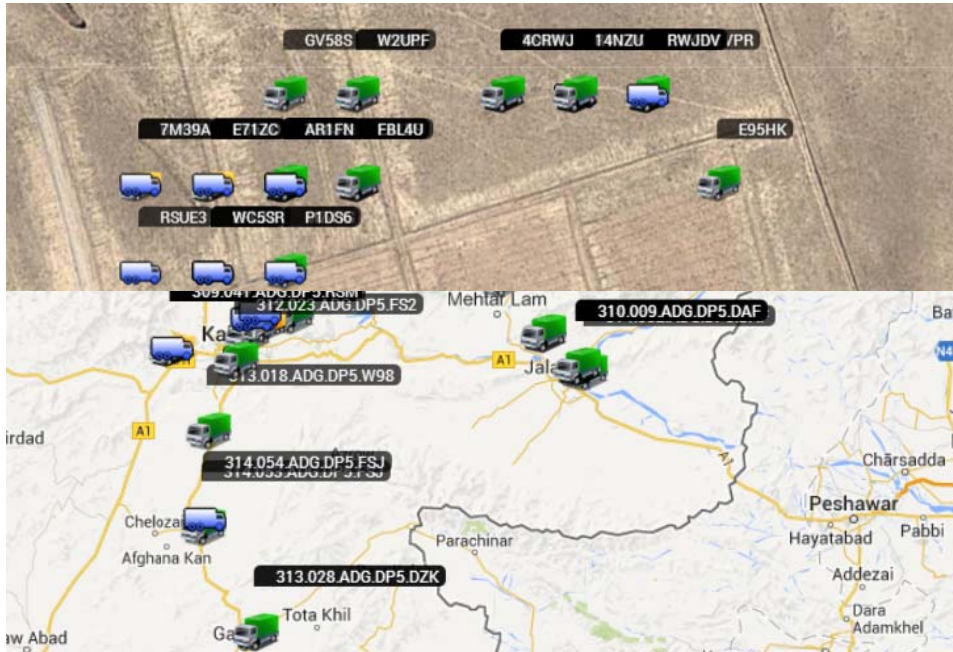
6. The Cloud base platform that would provide end to end item-level visibility and require a small team to operate



- * Business and contract models needed integrated information available at all times
- * During supply chain execution, ITV sends location information to ATMS
- * Final mile Mission creation and completion is controlled from Transportation Management Software which is cloud base and low risk
- * During mission execution, ITV sends location information to ATMS

The Program Management System that we needed

- The platform that would provide item-level visibility and require a small team to operate



- * Mission creation and completion is controlled from Transportation Management Software
- * During the mission execution the vehicles display the mission number. Before and after the mission execution they display the transponder serial
- * During mission execution, ITV sends waypoint names to ATMS, so they can be included in the Mission Tracker Report

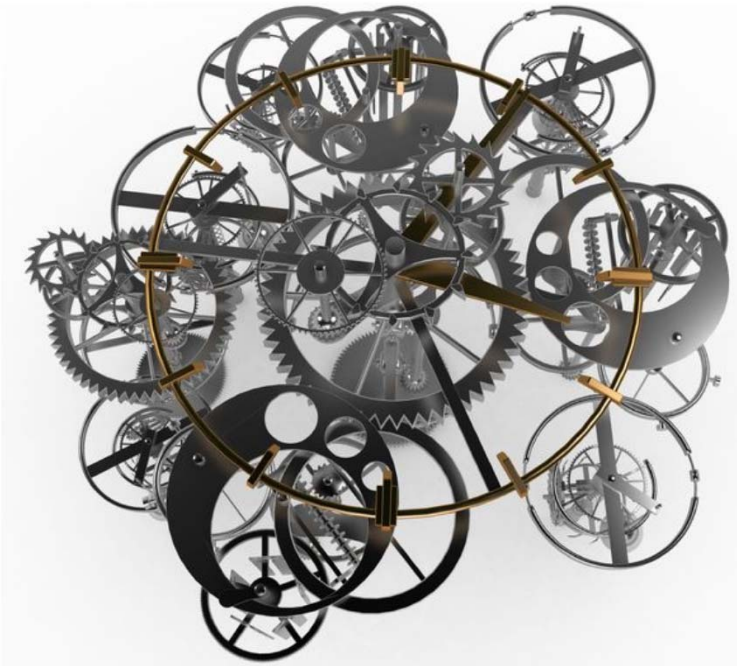
The ITV System that we needed

- Software platform that would provide item-level visibility and require a small team to operate

315.029.ADG.DP5.DW0 - TTXMS - 4:04:39 AM					
At BAFSTAGE					66%
	Arrival Time	Stop Time	Est. Travel Time	Act. Travel Time	Difference
<input checked="" type="checkbox"/>	1. DEPOTS	12:02 AM	0h, 4m	--	-
<input checked="" type="checkbox"/>	2. BAFSTAGE	4:33 AM	0h, 8m	--	0
<input type="checkbox"/>	3. W91DW0	--	0	--	0
Total Stops 3		Duration: --			
Est. Completion --		Distance: 4.65		0	
Act. Completion --		km		--	
Execution Plan: Normal		Est. Fuel: --		Efficiency Factor	
Driver: 5945-1007486		Act. Fuel: --		Act. vs. Est. (min)	
Status: At BAFSTAGE					
Orders: W580XY33110379,W580XY33120423					
Status History					
	5. At BAFSTAGE	11/12/2013 4:33:50 AM			
	4. En route	11/12/2013 4:33:50 AM			
	3. At DEPOTS	11/12/2013 12:02:00 AM			
	2. En route	11/12/2013 12:02:00 AM			
	1. Departed	11/12/2013 12:01:00 AM			

- * Mission details are being displayed in ITV, along with waypoint names
- * In the next software release:
 - * load details will be visible from ITV
 - * Additional fields displayed in ITV
 - * Automated transmission of waypoint names for polygonal geofences
 - * Manual mode operation – in case the transponder is off
 - * Filters based on mission-related fields: purchase order, ship, aircraft , truck, driver, destination, requested delivery date, etc.

The Program Management System that we needed



The ideal solution is that one that answers all customer's needs, and in which every component is adapted to its requirements and with the Holistic approach to hosting our network within the cloud enables the rapid deployment of solution to various remote and some what unstable area's.

In today's complex and competitive business environment the sum of all solution components is what brings customer closer to its business objectives.

Questions?

Thank You