



HAMAD PORT DEVELOPMENT

Qatar's New Gateway to the World



Dr. Mohamed Briouig
Trans Middle East Conference; May 6, 2015

Outline



- Introduction**
- Program & Status of the Port Project**
- Environmental Considerations in Hamad Port Project**
- Operation Readiness and Milestones**
- Conclusion & Way Forward**

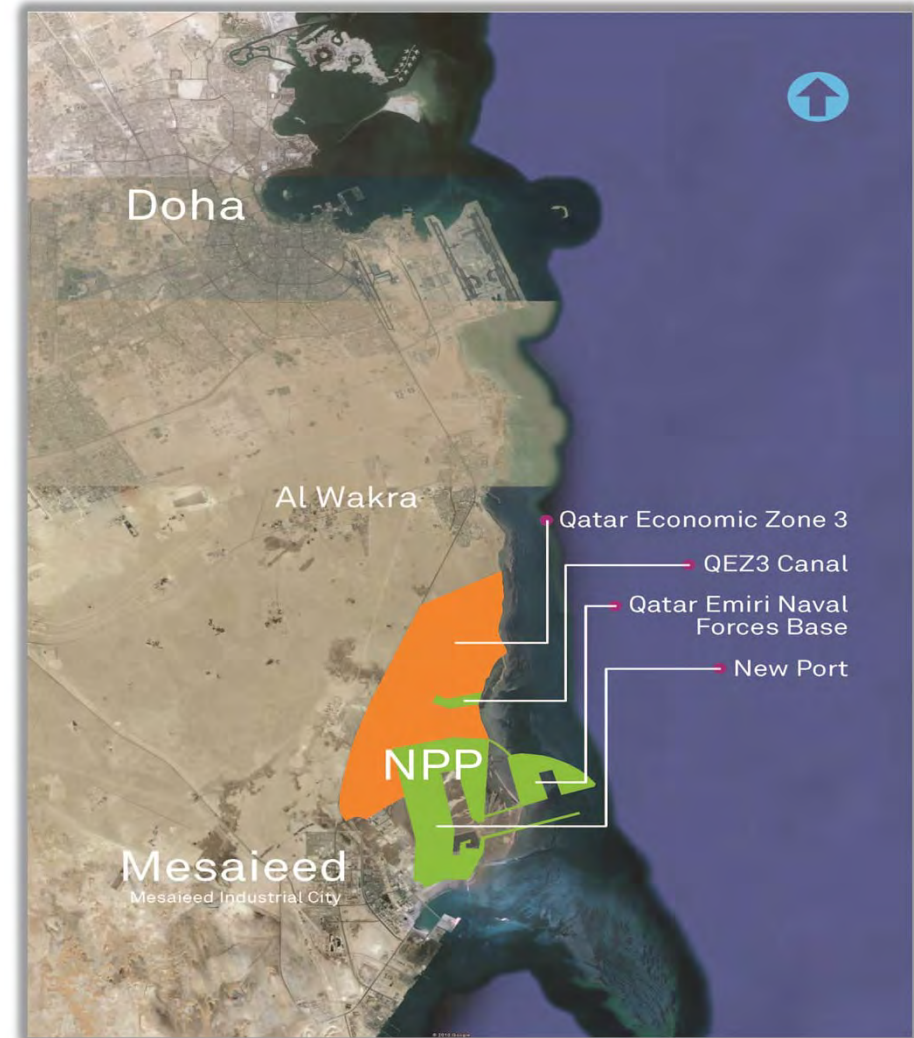
Introduction



- Qatar's economy is considered among the world's fast growing economies, driven by the Oil and gas sector and strong domestic demand.
- Hamad Port is one of the largest infrastructure projects launched recently in Qatar as part of a public strategy to fulfill Qatar's National Vision 2030.
- The port is establishing itself as an alternative hub in the region capitalizing on its favorable geographical location in proximity to the upper gulf hinterlands and on its world class infrastructure.

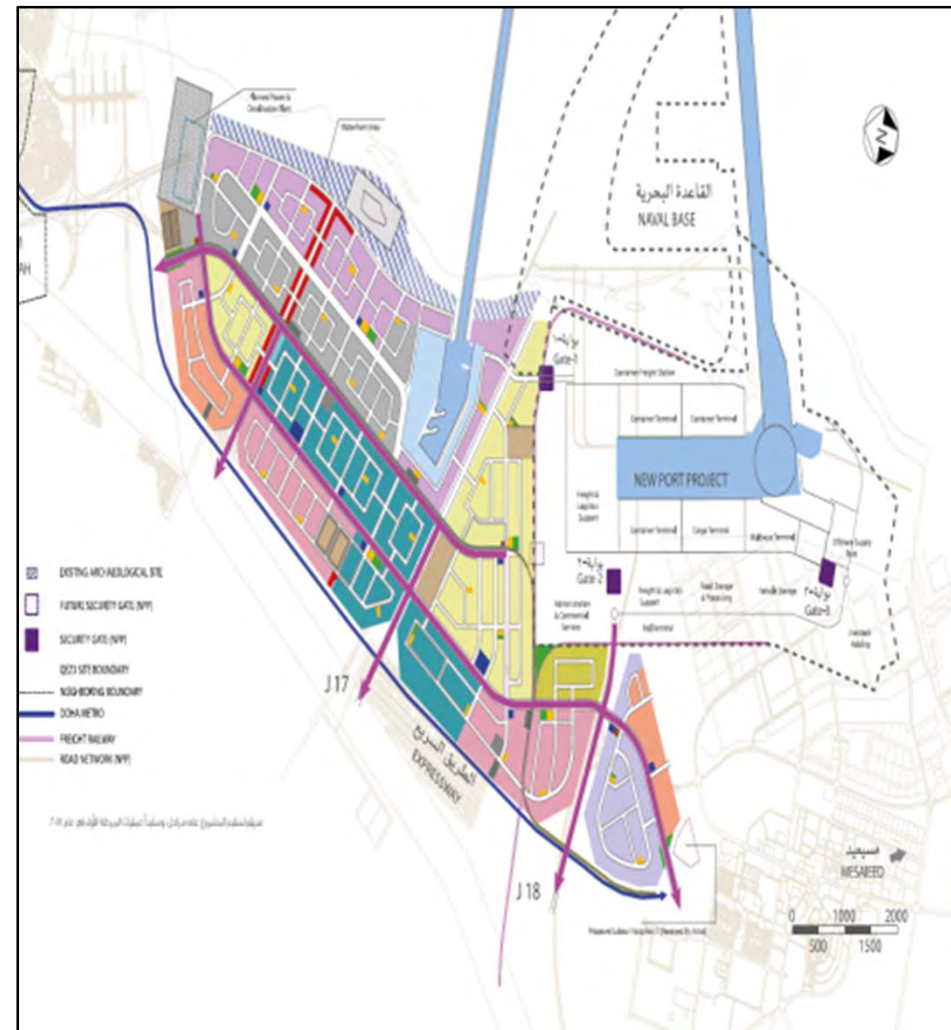
Background

- **Project Elements:**
 - Hamad Port
 - An Economic Zone Canal- QEZ-3
- **Budget and Area:**
 - US \$ 7.4 Billion
 - 26.5 km²



Hamad Port & QEZ-3

- **Vision:** making the port and the QEZ-3 as one integrated Industrial and logistics area - Synergy between the Port and the Economic zone;
- **Strategy:** attract domestic and FDI to diversify the industrial base of the State;
- **Focus:** Non oil based industries, mainly High Tech.; downstream petrochemical and metallurgical; oriented for export through Hamad Port;
- A large logistics zone is planned adjacent to the Port to serve port users.





Project's Scope



The Port Main Particulars

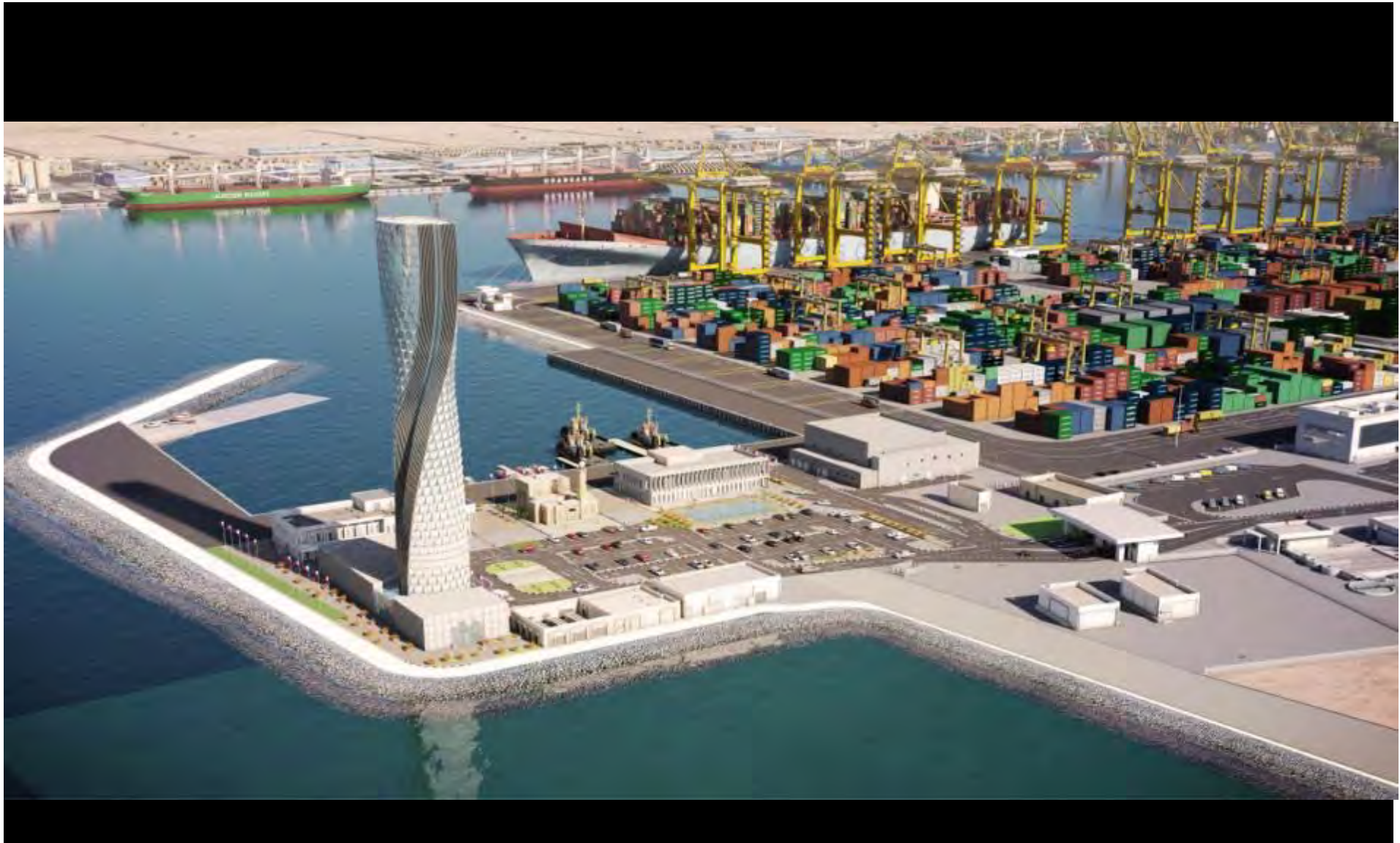


Marine Access and Port Basin





The Port VTMIS Tower



Port Administration Area



Centralized Customs Area



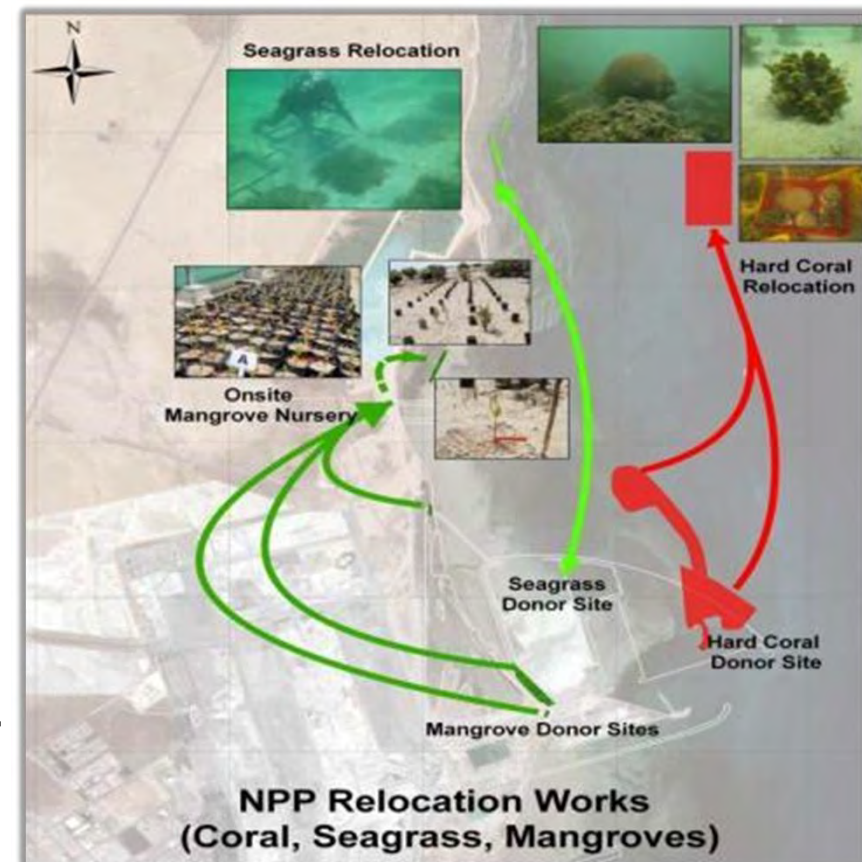
QEZ Canal



Environmental Considerations

Relocations:

- **11,500 m² of sea-grass - survivability 84%**
- **13,650 hard corals - survivability 90%**
- **7,600 mangrove seedlings – survivability 226%**



Soft & hard corals



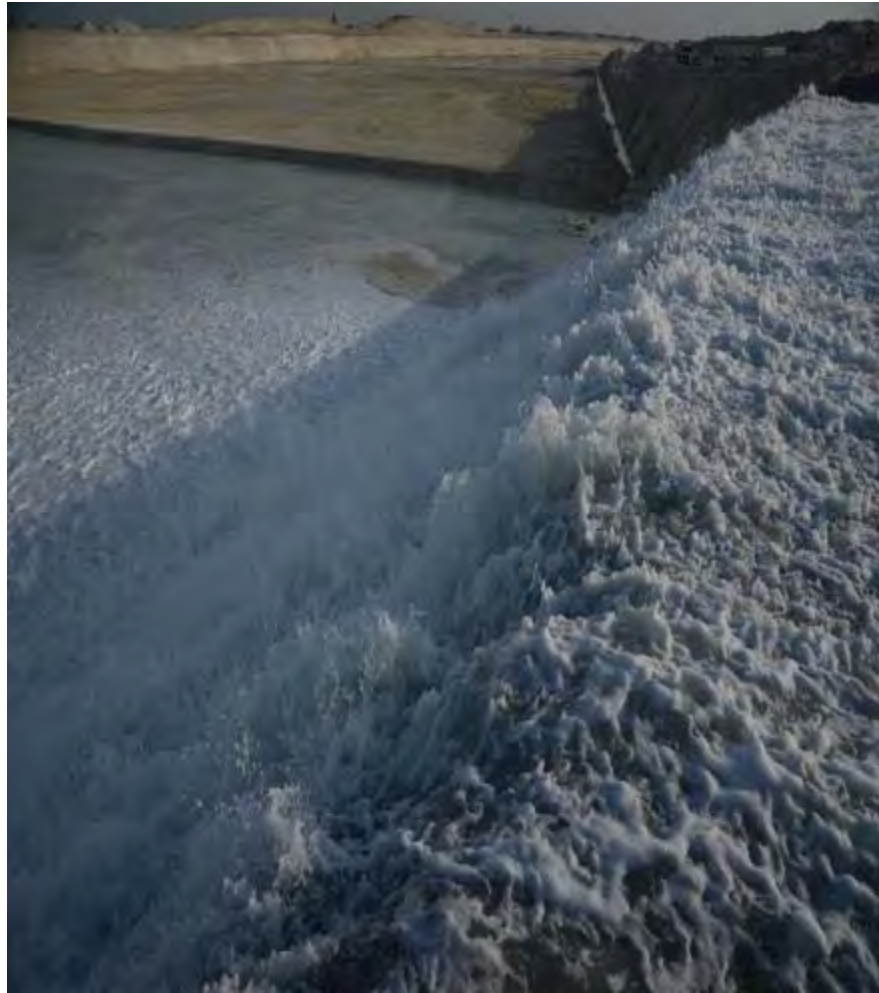
Project Status



- **Project's Overall Progress:** More than 66% complete;
Expected Completion: December 2016;
- **Soft Start up of operations:** 4th Quarter 2015;
- **Arrival of first batch of STS Cranes:** 1st week of July
- **Full Operation of Phase 1:** December 2016



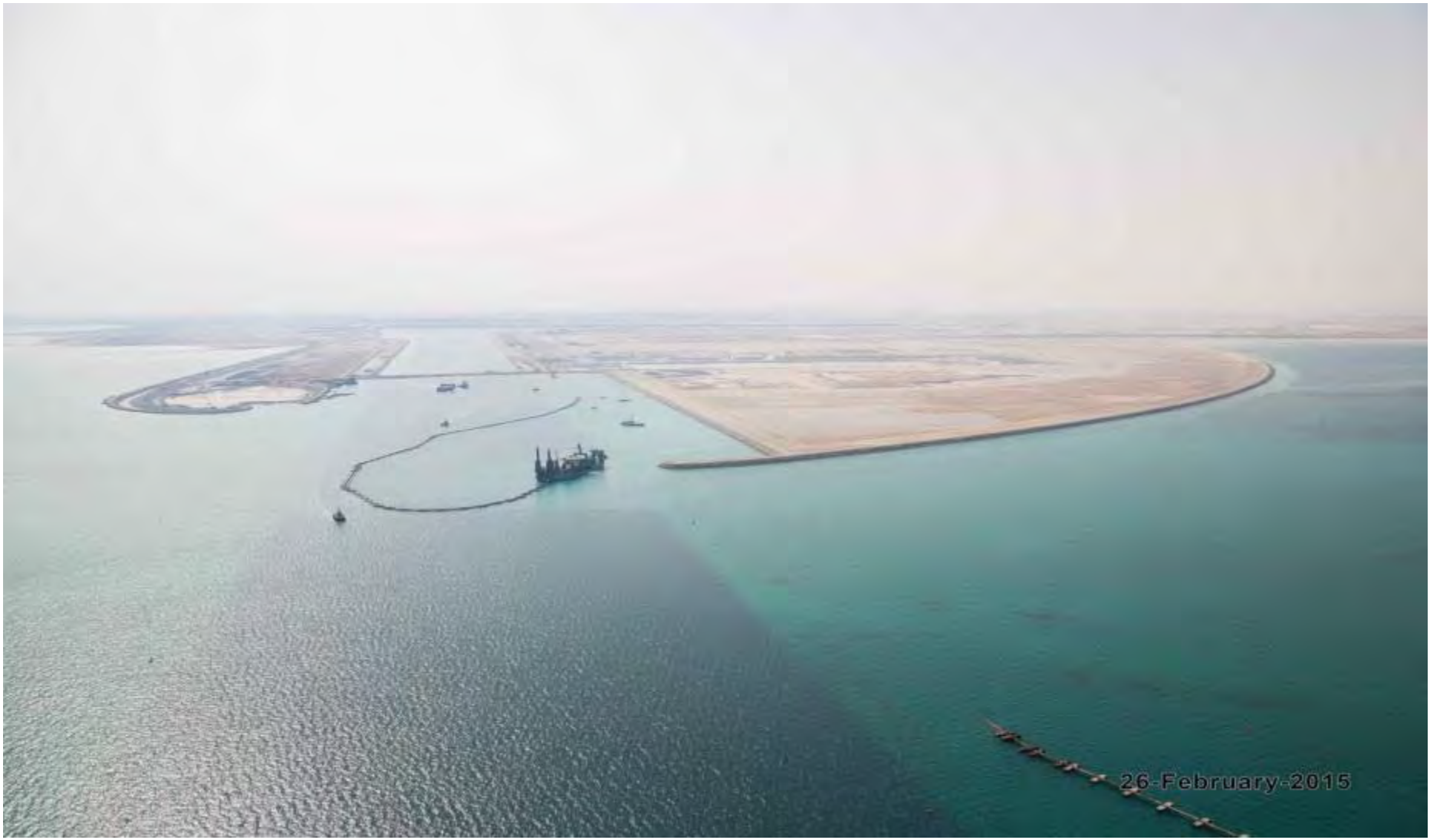
Flooding of the Port Basin Completed End March 2015



The Port Basin- Looking North



Port Access Channel- Looking West



26-February-2015



Port STS Cranes & RTGs

Phase 1: 8 STS Cranes + 26 RTGs





Port Vessels (Under Construction in Qatar)

Tugs: 7 Units



Pilot Boats: 4 units





Operation Strategy

- Hamad Port CT-1 & GCT are planned to be operated and maintained by a single terminal operator;





Conclusion

- Hamad Port is a state of the art port infrastructure which will be an important addition to the Port infrastructure in the Gulf Region.
- Along with QEZ-3, the Port will form a regional and international logistics hub, providing full service to end users at the highest international standard.
- The Port is planned to be a destination of choice for gateway cargoes as well as for transshipment to upper Gulf countries.



Thank You