

DRIED

BULK MARKET

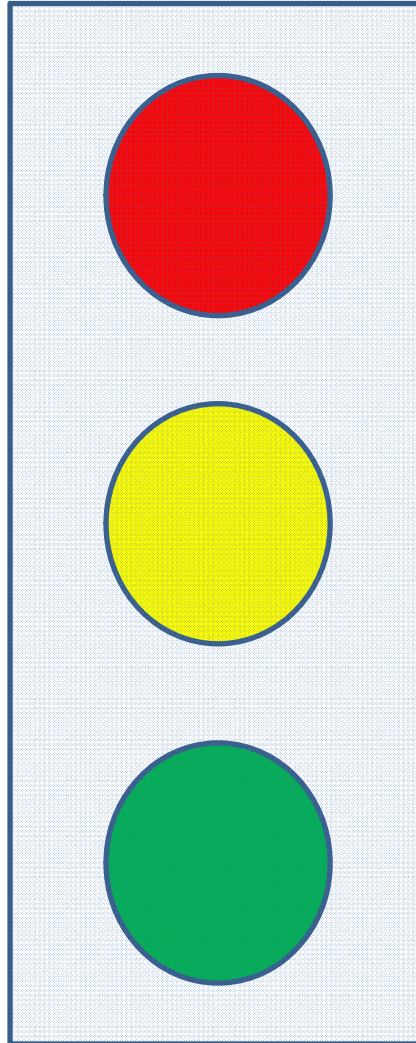
Middle East and trends in
growth and operation

CAPTAIN JITESH JAIPURIYAR



www.emeraldmaritime.net

ROADMAP

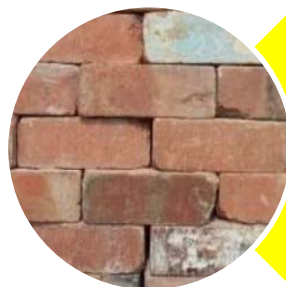
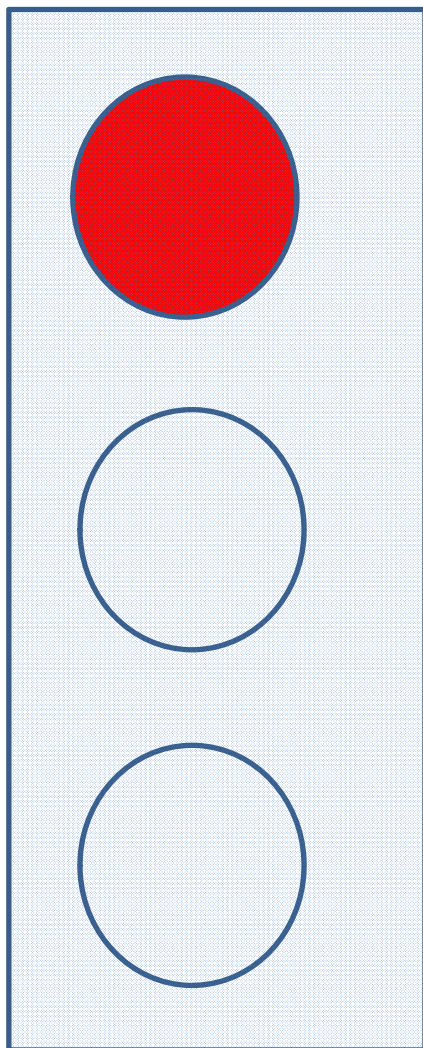


**CHECK IF NO POLICE
THEN
GO FAST**

GO FAST

JUST GO

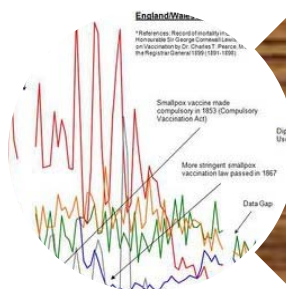
ROADMAP



FUNDAMENTALS



ECONOMICS



FORECAST

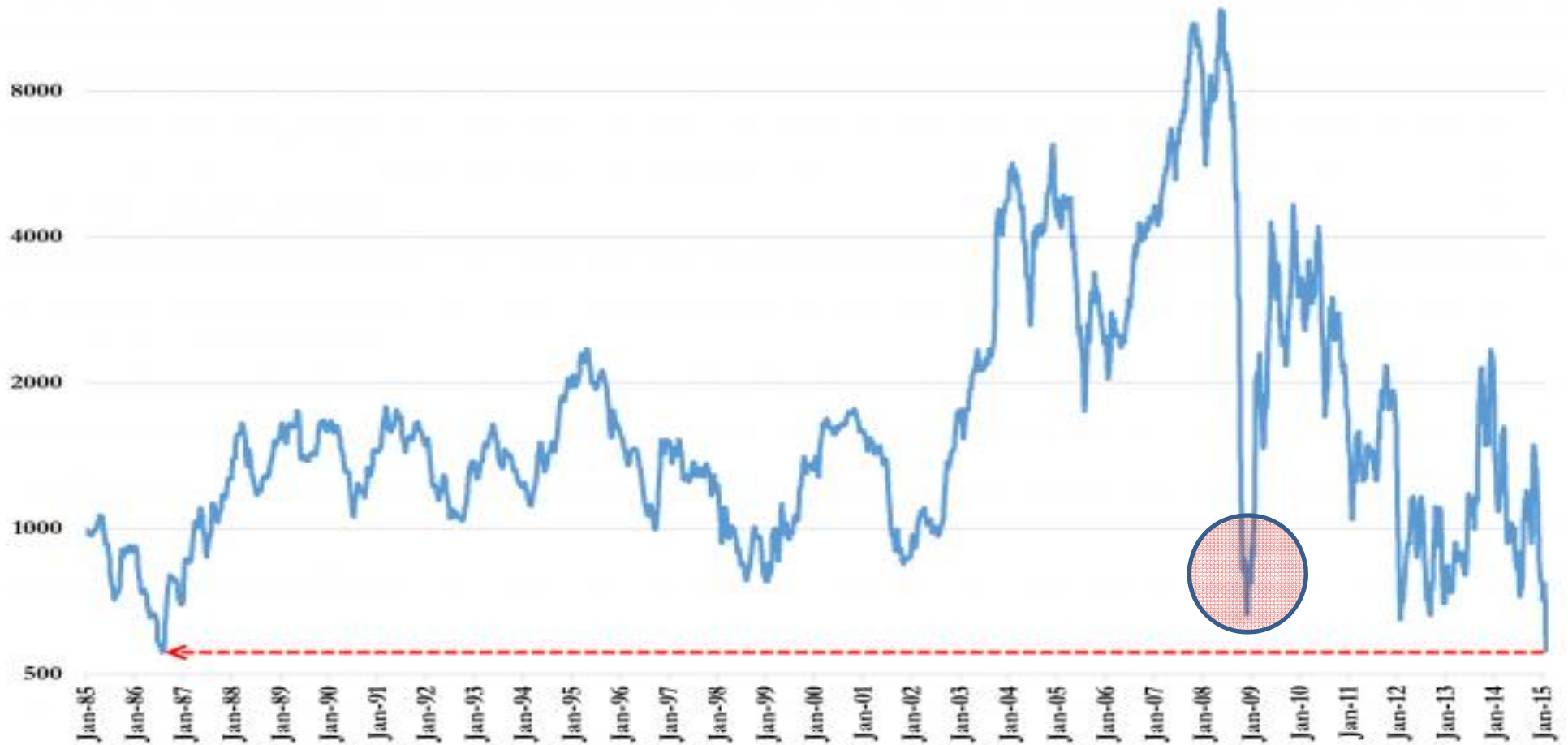
COMBINATION FO FINANCIAL CRISIS AND LARGEST ORDER BOOK IN LAST 30 YEARS

BLUE OCEAN IS NOT BLUE



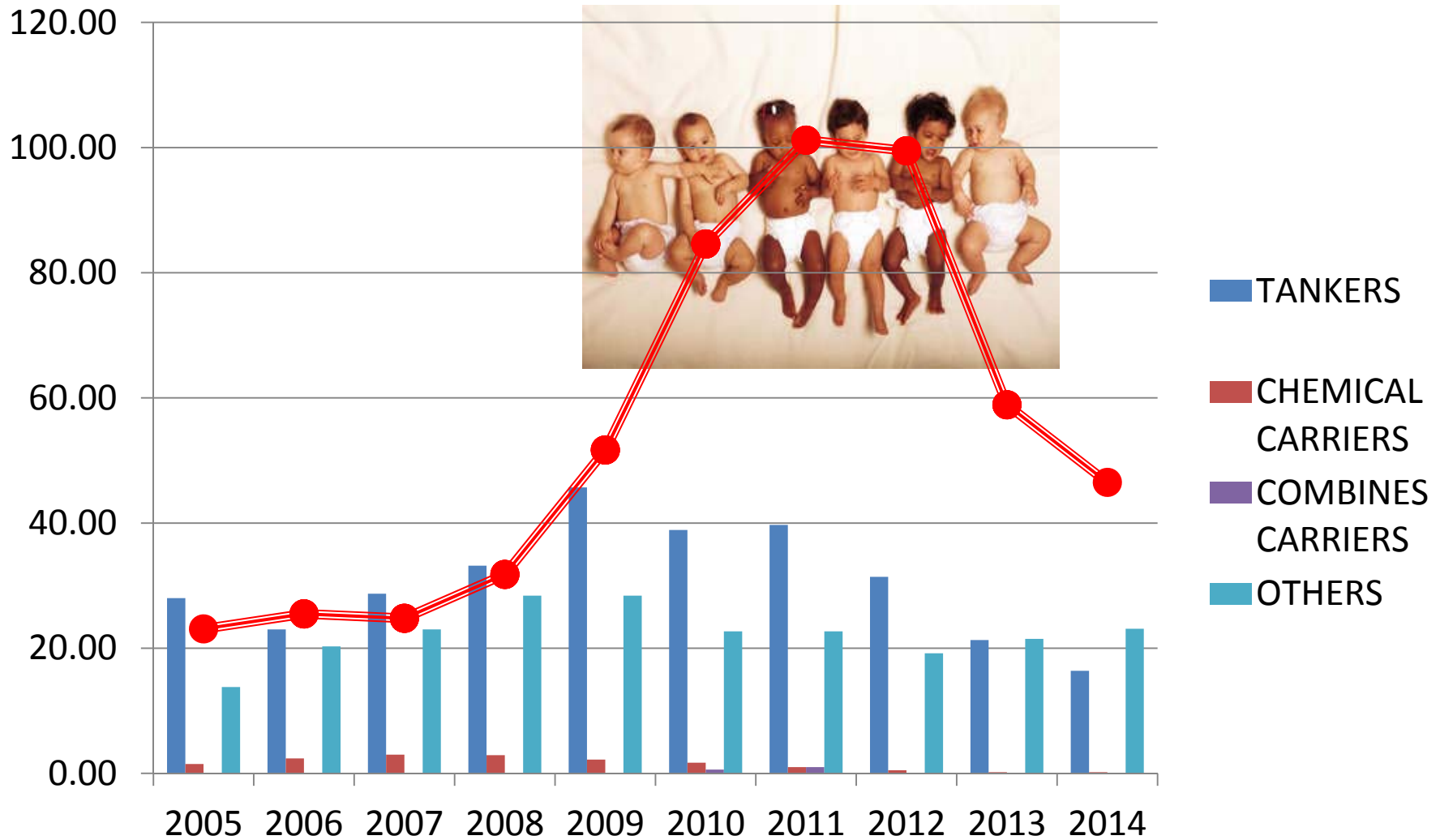
SHIPPING IS ALL TIME LOW

Baltic Dry Index

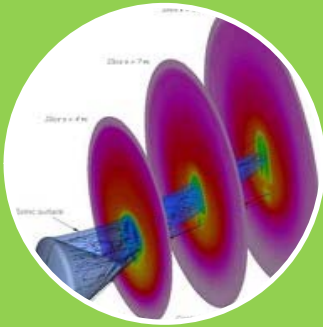


At 559, The Baltic Dry Index is just 5 points above its all-time record low from 1986.

ANY WHY NOT?...MILL DWT DELIVERED



WHAT IS TO WORRY



**Velocity of
Collapse**



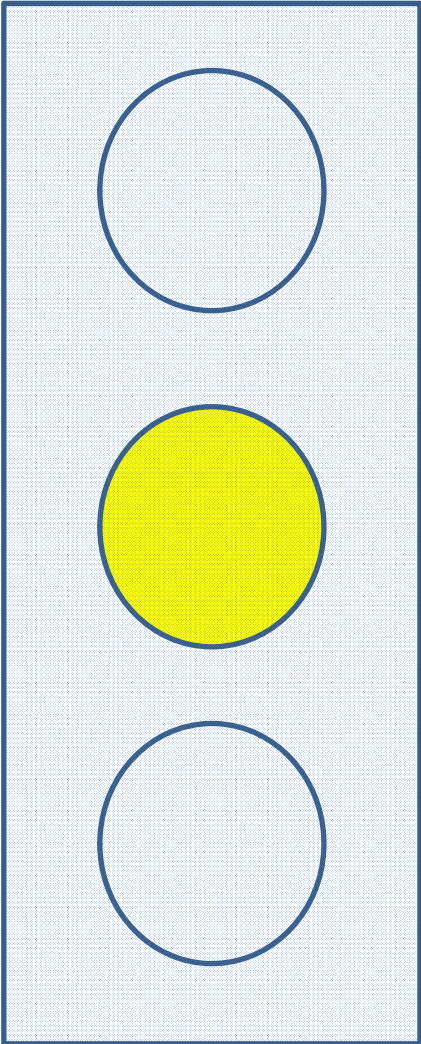
**Mal-
Investments**



**Economic
Reality**



CAUTION AHEAD



SUPPLY OF SHIPS

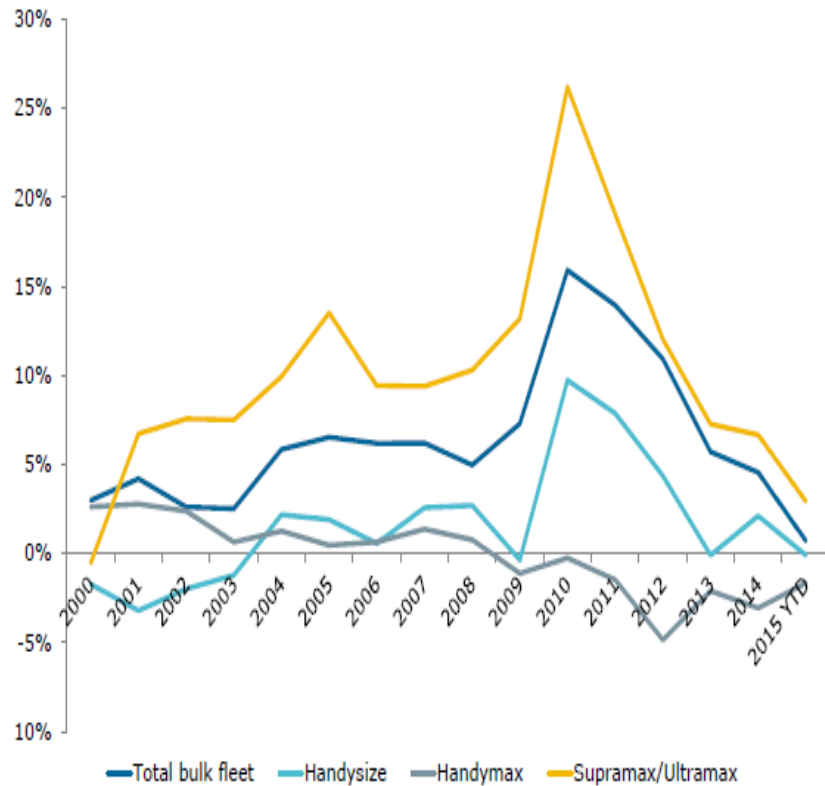


PAPER TRADES

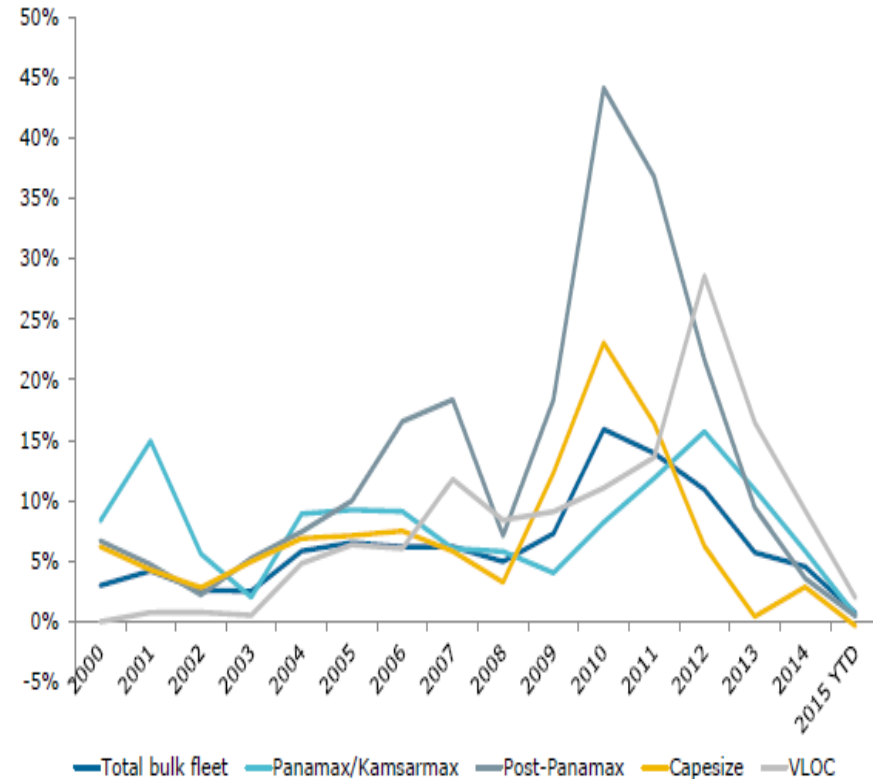


GEOPOLITICAL TENSIONS

HISTORIC FLEET GROWTH - DRY

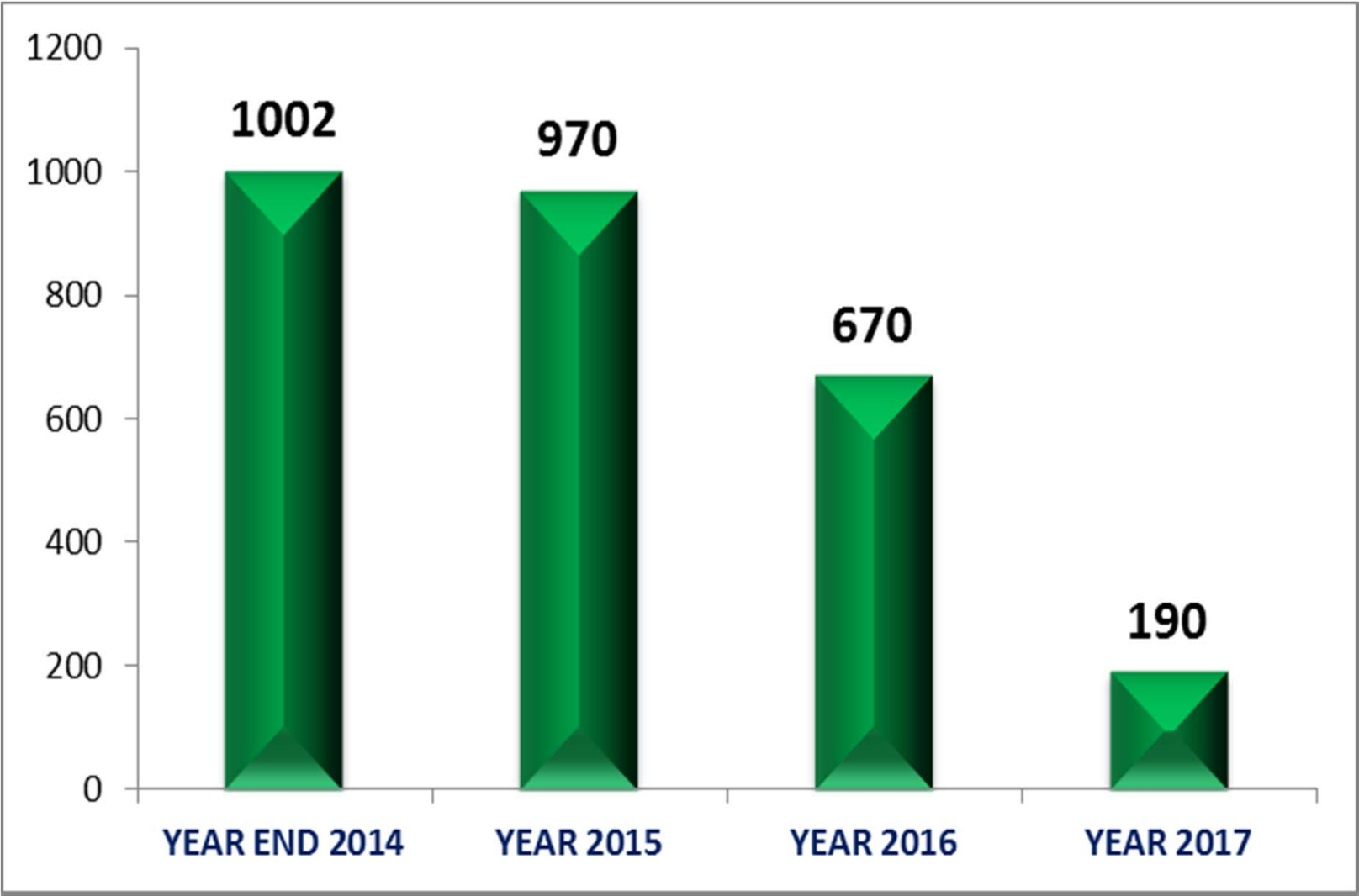


20,000 – 66,999 DWT



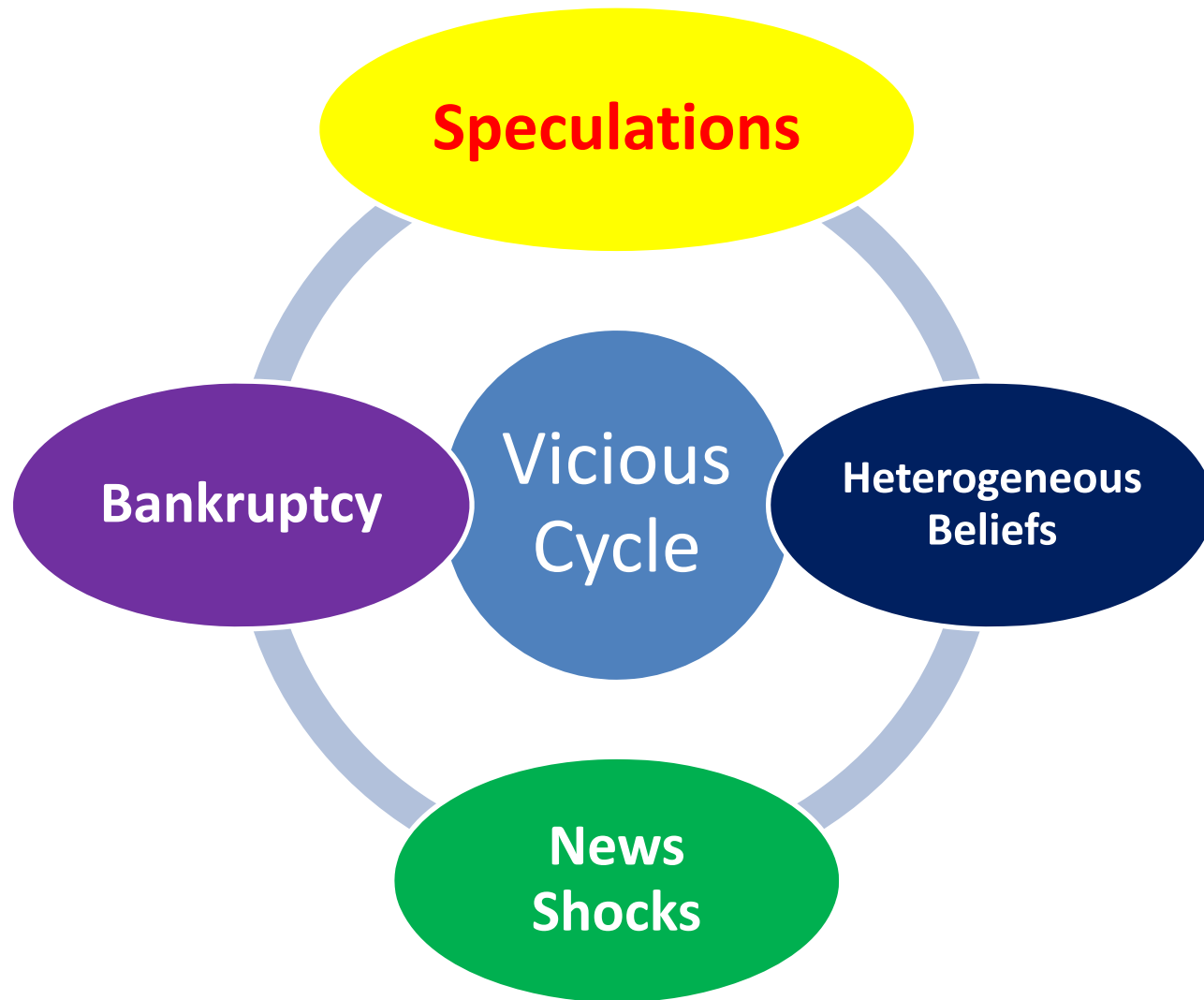
67,000 – 200,000 + DWT

CURRENT ORDER BOOK



Source: BOSTOMAR consultancy

PAPER TRADE

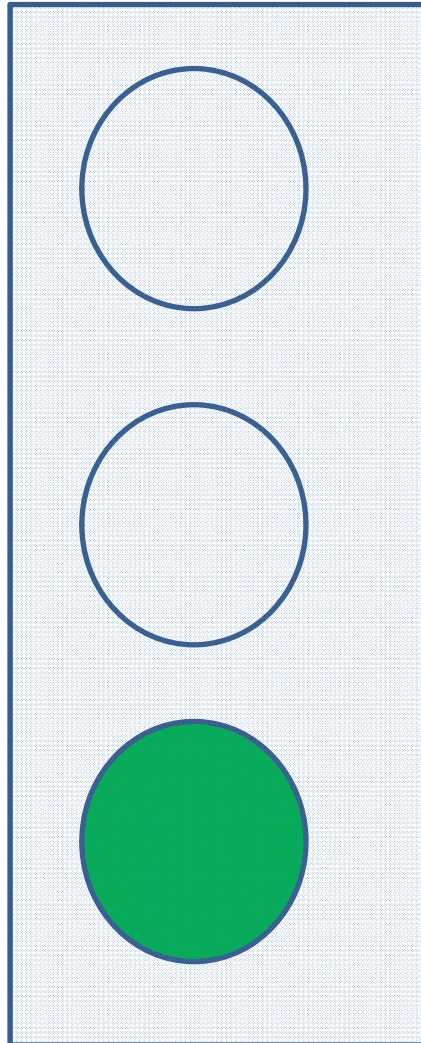


GEOPOLITICAL TENSIONS



Source: AON

HOPE AND MOVE ON



ROLE OF MIDDLE EAST



QUANTITATIVE EASING

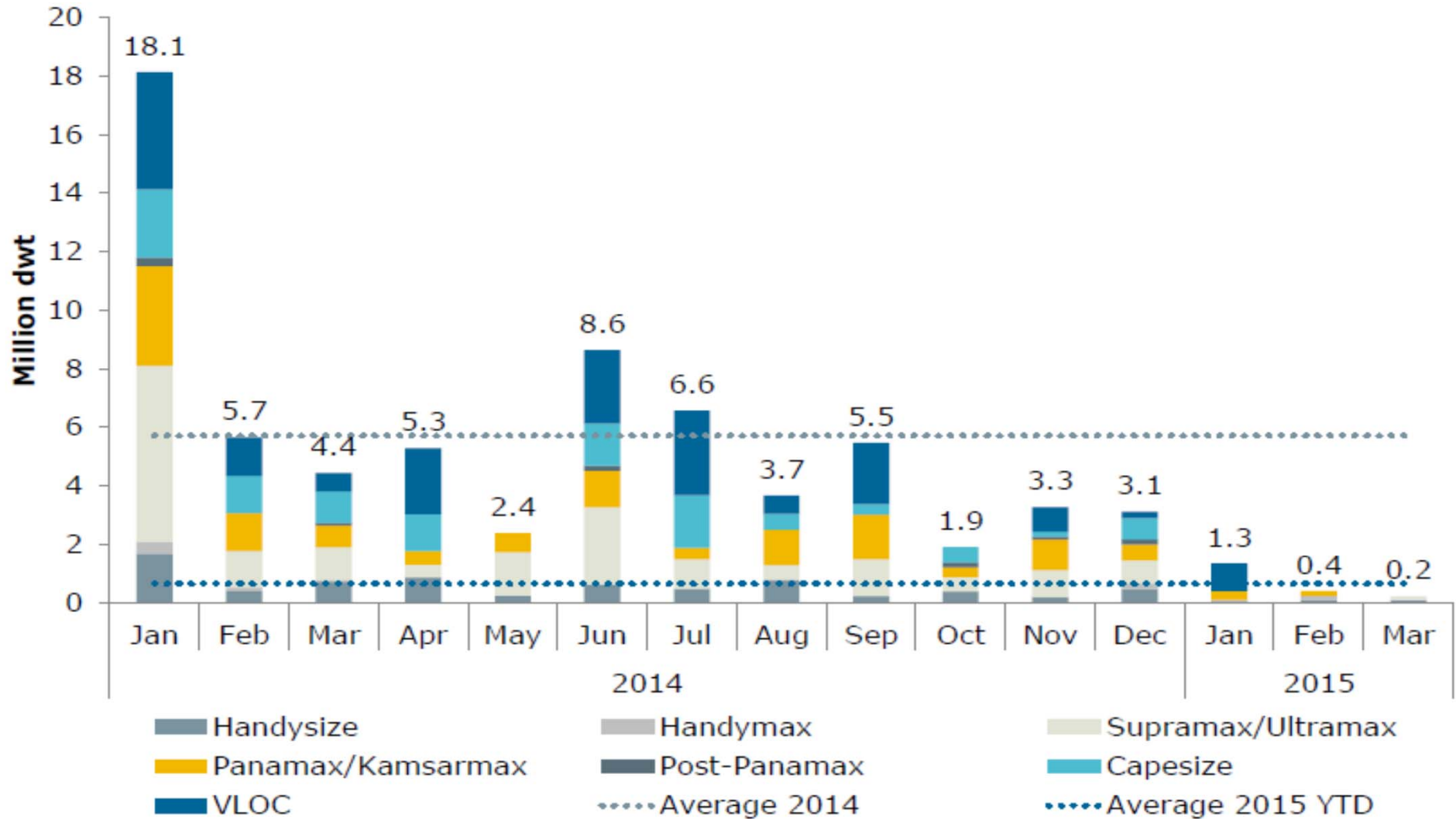


STAKEHOLDER APPROACH

LEADERSHIP BY “MIDDLE EAST”

- QPMC AND ITS EFFICIENCY- AGGREGATES
- DOWNSTREAM INVESTMENTS IN MIDDLE EAST AND ITS IMPACT ON SHIP'S DEMAND
- GLOBAL FLOWS OF COMMODITY SHIFTING TOWARDS EMERGING MARKET-AFRICA
- MIDDLE EAST- GATEWAY TO AFRICA
- MIDDLE EAST – LEADERSHIP IN IMPORTS

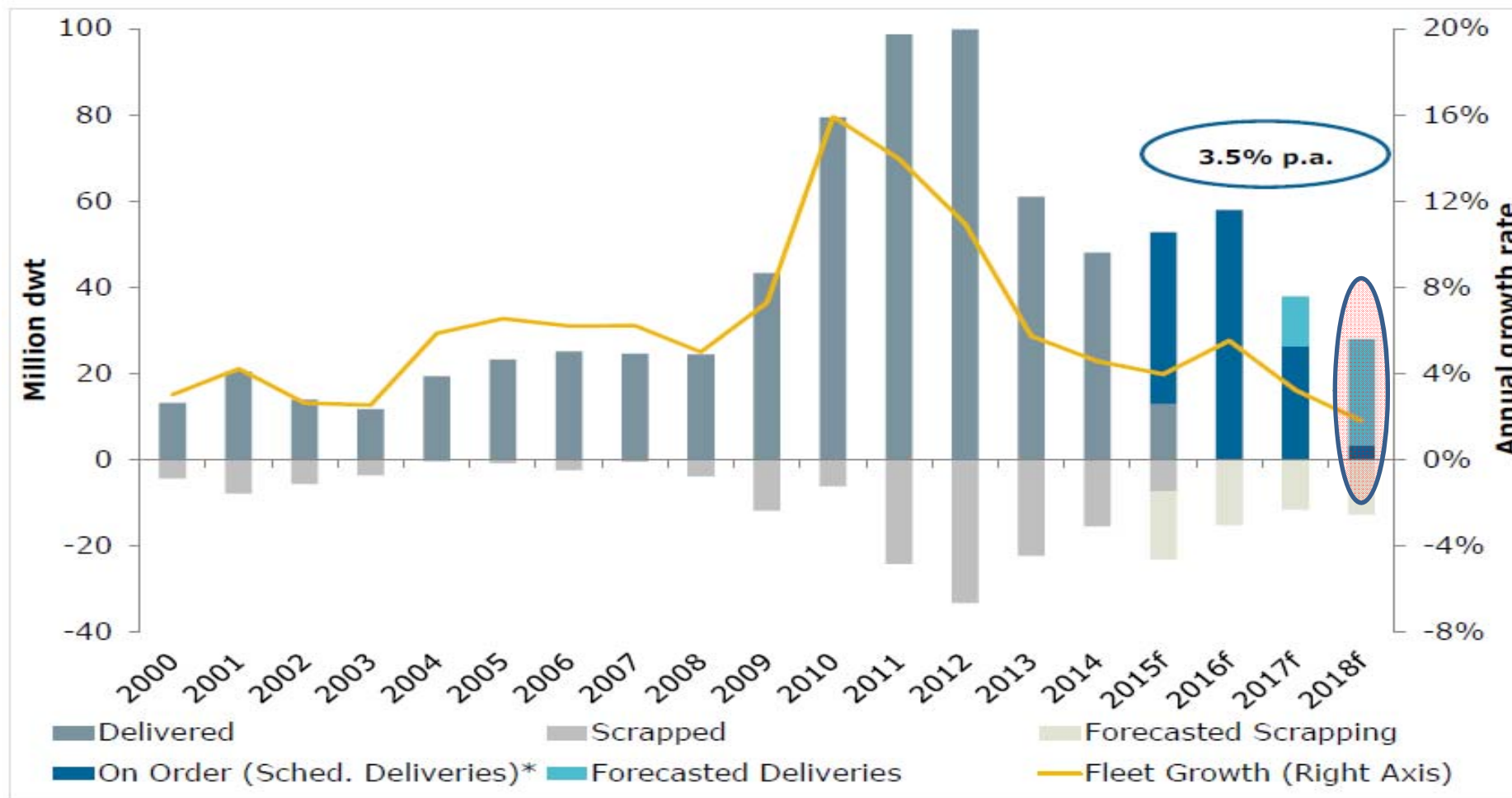
CONTRACTING ACTIVITIES ARE DECLINING-SUPPLY OUTLOOK



From 69 mio dwt in 2014 to 10-15 mio dwt in 2015

Source: BOSTOMAR consultancy

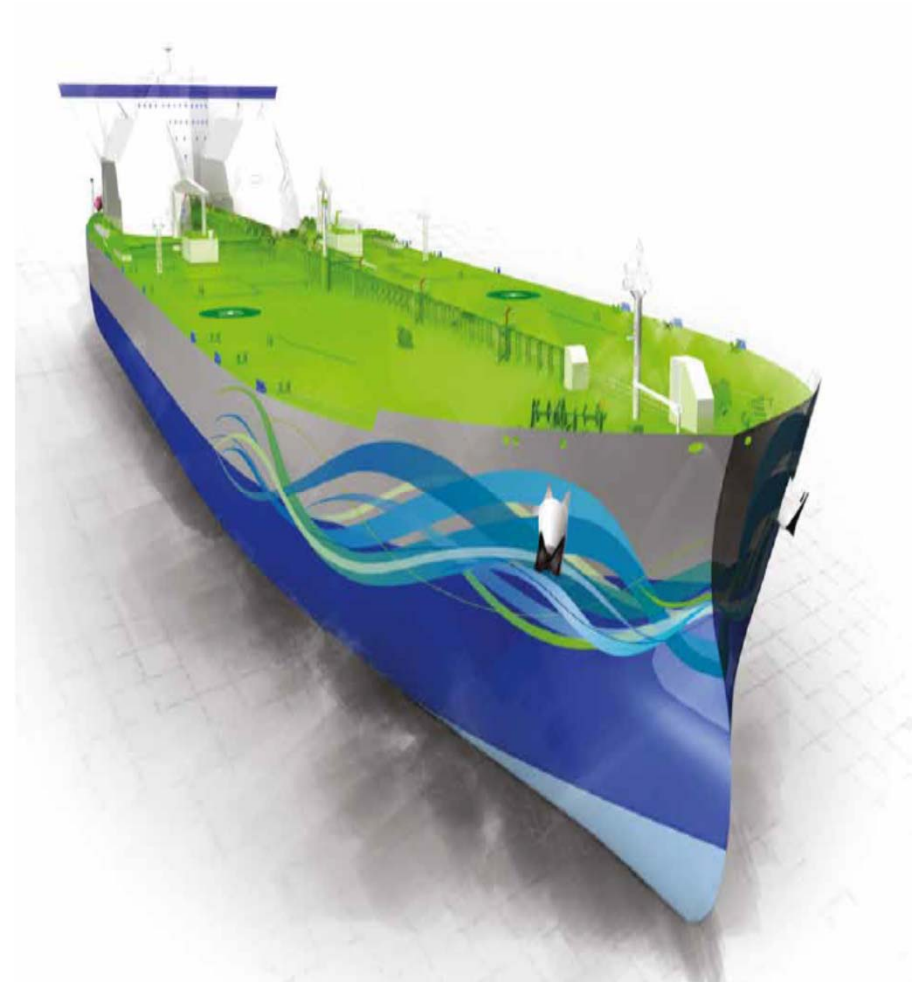
Which means supply growth reduces



Source: BOSTOMAR consultancy

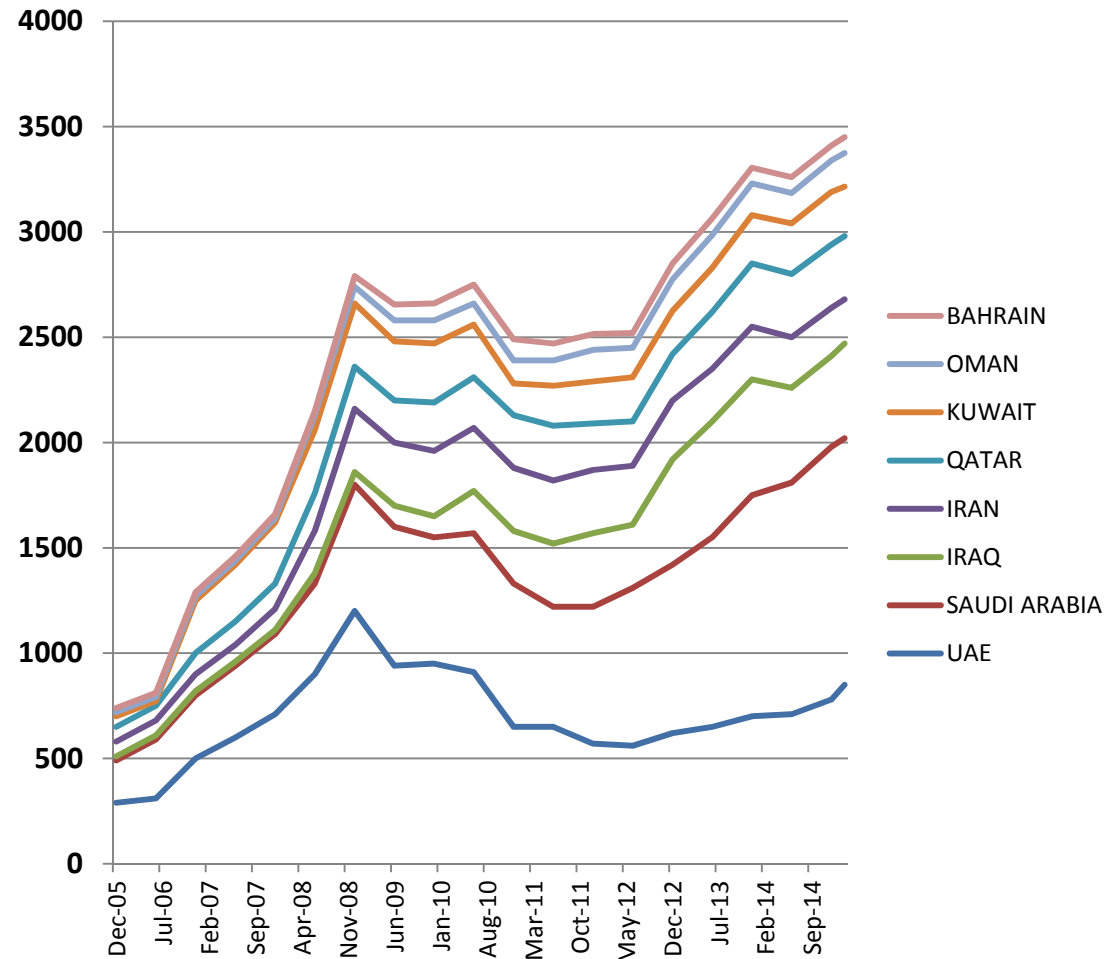
MIDDLE EAST FACTOR-DRY BULK

- It is expected that the trade between Africa-Asia and the Middle East-Asia will keep growing at a higher pace than the rest of the world as we approach 2020, and this will have a positive effect on the dry bulk market.



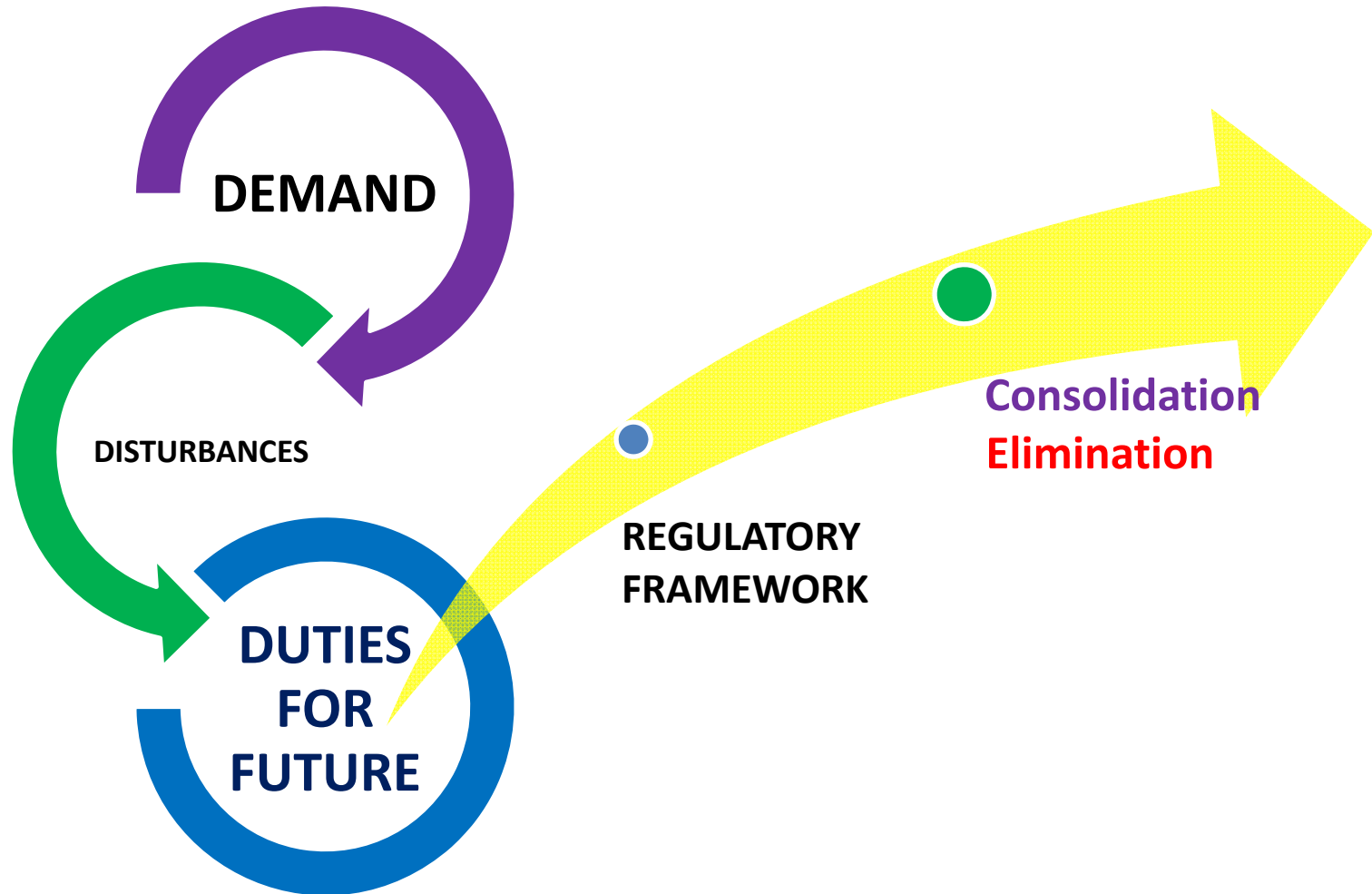
MIDDLE EAST FACTOR- LINER TRADE

- Asian Containerized Exports to Middle East rose by 8%, Africa by 13%;
- Container ships ordering reduced last year;
- No ships of 4000-8000 TEU ordered last year.



PROJECTS PLANNED IN USD BILLION-Gulf project Index

YEAR 2015: “BUMPS AND TURNS”



**THANK
YOU ALL**

Should you have any follow up questions, do not hesitate to mail me on:

COO@EMERALDMARITIME.NET