

Risk & Reward

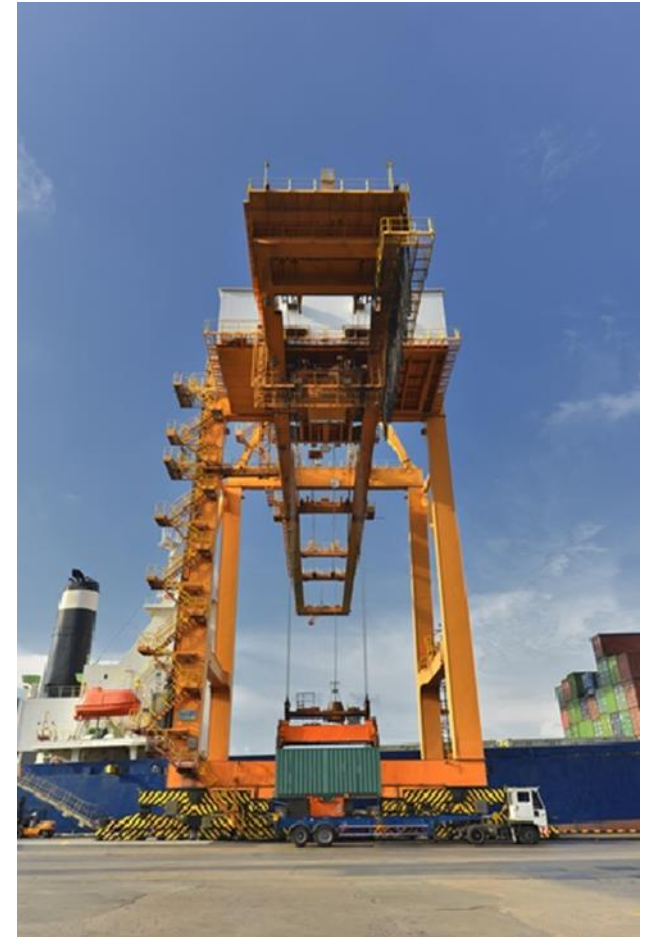
An insurer's guide to accidents, insurance and risk management in port & cargo handling operations

What is TT Club

What caused 77% of our Port and cargo handling accidents between 2010 – 2017 ?

Trends, Risks & Risk Management

- Fire & Cargo Integrity
 - Ships hitting cranes
-
- Insurance for Ports, Terminals & Cargo Handling Facilities
-



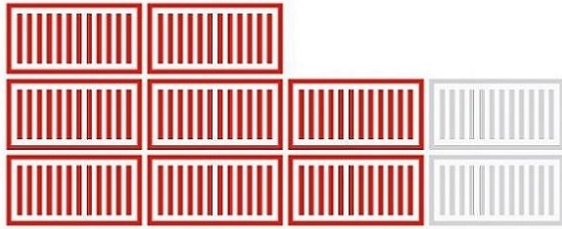
TT CLUB



established expertise

80%

OF THE WORLD'S CONTAINERS
ARE INSURED BY US



46%

TOP 100 PORTS



What caused 77% of accidents











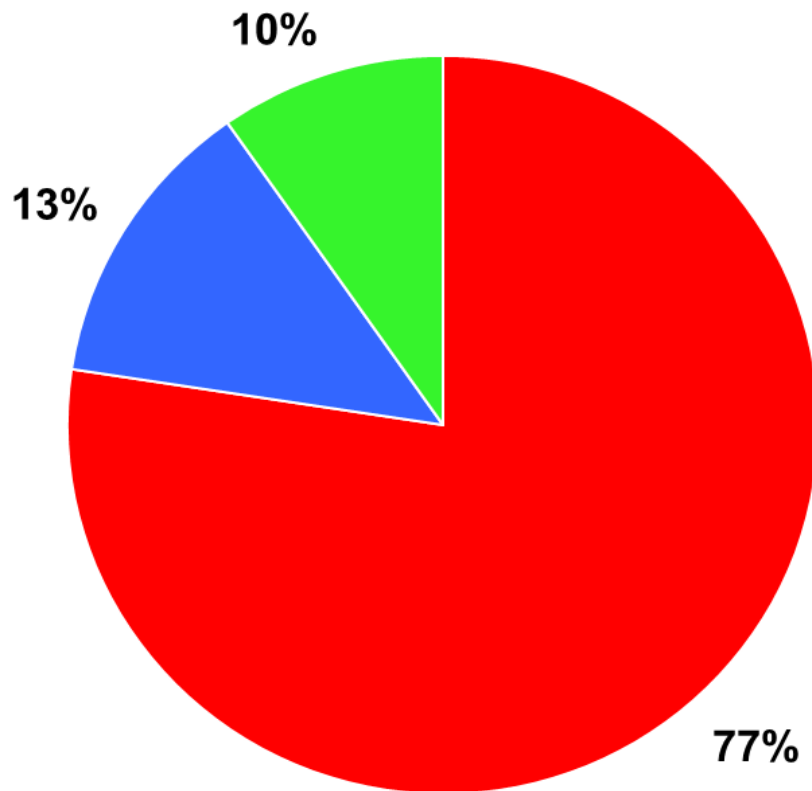






What caused 77% of accidents





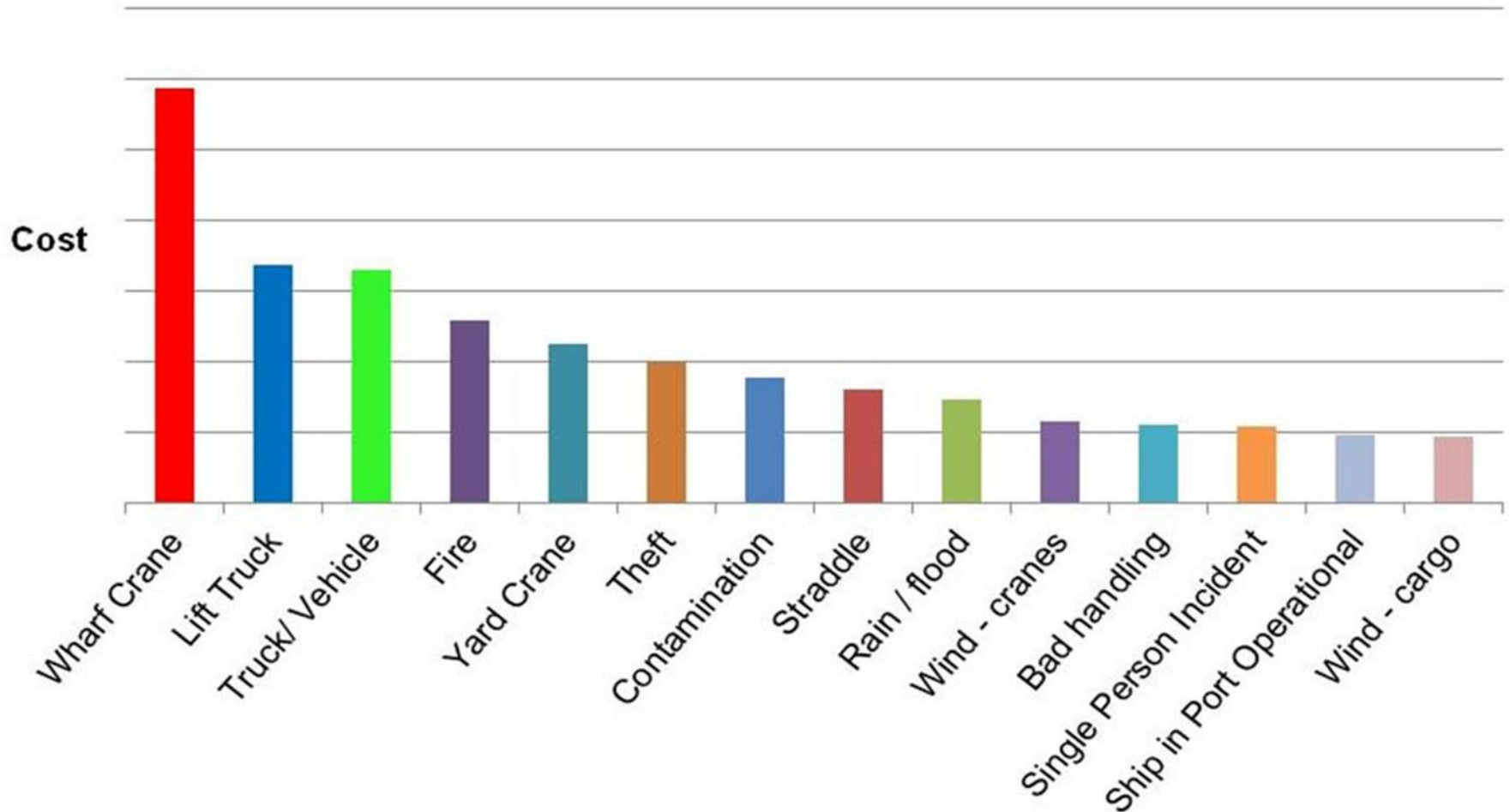
Weather Related Claims

Poor Equipment Maintenance

Operational Claims / Human Errors

all claims from 2010 to 2017 across our 1,500 port and terminals operators

Human Error & Operational accidents



Wide range of technological solutions to port equipment risks and safety

e.g. Anti boom collision laser system is USD 15,000

Not fitting one to your cranes is like buying a Bentley and removing the parking sensor to Save USD 100



IT / TOS system being essential to your business but not buying antivirus software

Updates & Trends for 2019

- **Fire, Explosion & Cargo Integrity**
- **Ships Hitting Cranes**
- **Training & Equipment Maintenance**



Hyundai Fortune (1996)

- Fire onboard
- Capacity up to 5,551 TEU
- Fire broke in Gulf of Aden
- 27 Crew – all reported safe

MSC Daniela (2017)

- Fire onboard
- Capacity up to 13,798 TEU
- Fire broke out 120m off Colombo
- 22 Crew – all reported safe



Maersk Honam (2018)

- Capacity up to 15,226 TEU
- Fire broke out in Arabian Sea
 - 27 Crew



Cargo Integrity and the CTU Pack Code

- 2014 IMO Code of Practice (CTU Code)
- Not mandatory by Law but incorporated by certain countries
- E-learning: www.CTUpack.com

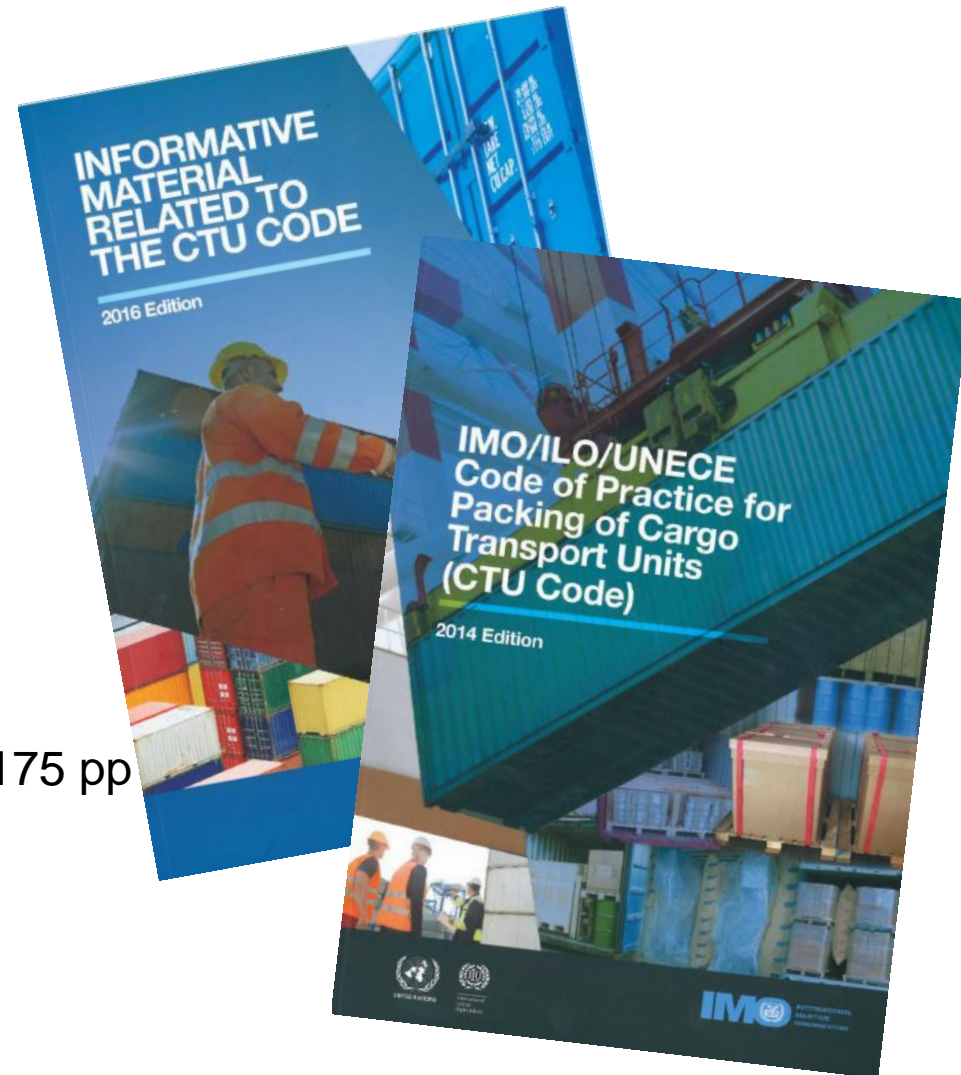


Status & awareness

- Approved by IMO/ILO/UNECE (MSC.1/Circ.1497 & MSC.1/Circ.1498)
- Online & in print
- E-learning: www.CTUpack.com

Substance

- Code: 13 chapters ~45pp
- Annexes: 10 sections ~100pp
- Informative Material: 10 sections ~175 pp
- Due diligence (MSC.1/Circ.1531)







COACHING



TEACHING



KNOWLEDGE

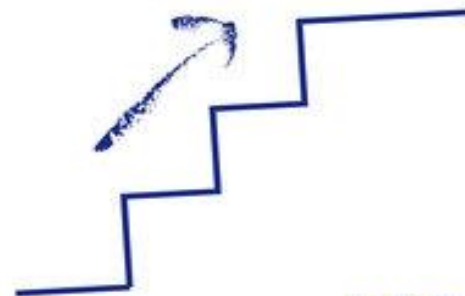
TRAINING



SKILLS



LEARN



DEVELOPMENT



EXPERIENCE





Insurance for:

- **Port Authority**
- **Terminal Operator**
- **Stevedore**
- **Depot or Warehouse**

Assets: owned or leased

Property – Building & Infrastructure

Equipment – Cranes and Yard / Depot Equipment

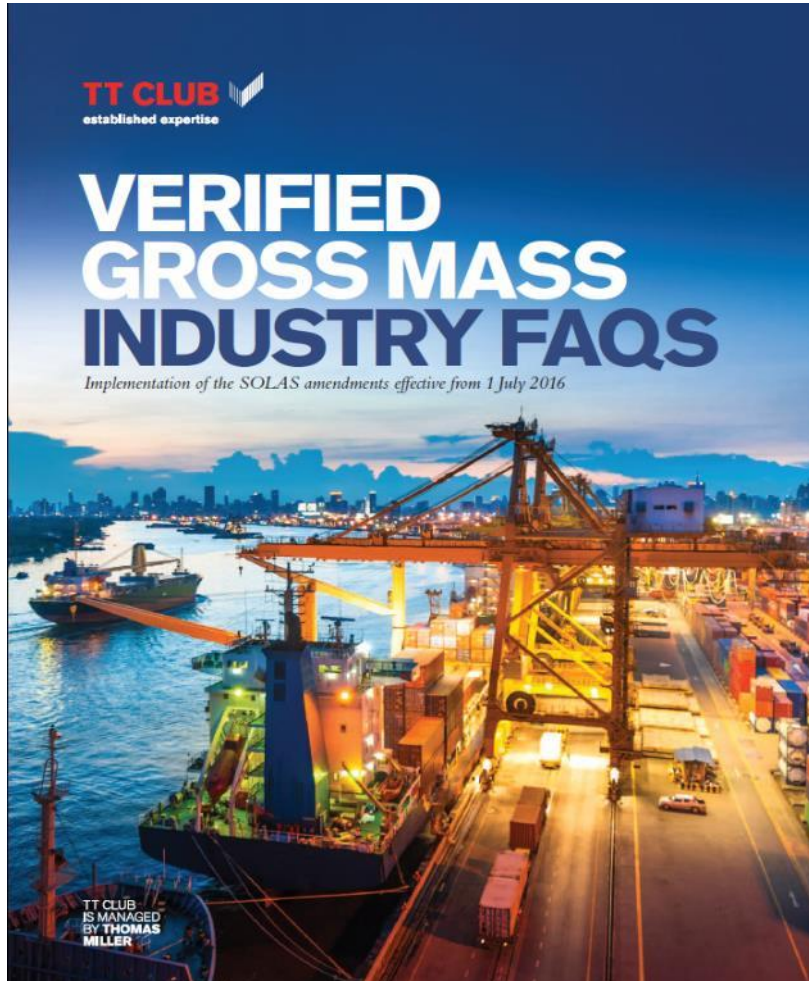
Port Ships – Tugs, Pilot and Workboats

Liabilities: to others not your own losses

1. **Customer Liability** – damage to ships, cargo and customers property
2. **Third Party Liability** – pollution, others property & personal injury
3. **Professional Indemnity** - Errors & Omissions eg loading error
4. **Fines** – from a Government or Authority (eg Customs)
5. **Costs** – Legal and Expert Fees, Disposal of Damaged Cargo

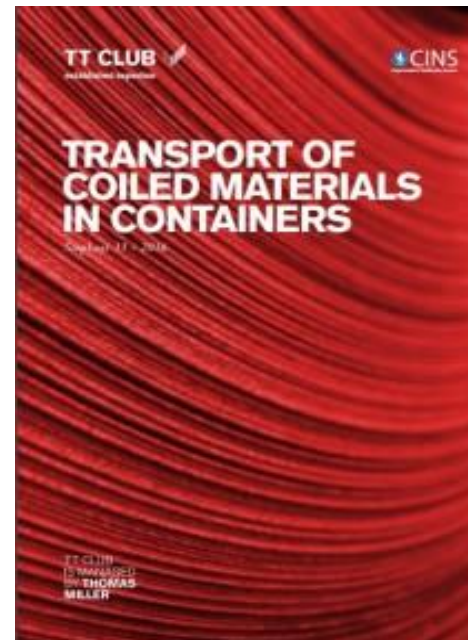
Added Value expertise in dealing with incidents and handling claims following accidents





TT Club Publications:

- TT Talk
- House to House
- Conventions Handbook
- Port Authority Risk Matrix



Thank you
Julien Horn



julien.horn@thomasmiller.com

