

MLION CORPORATION

Sustainable Solutions for Tomorrow's Port

Thailand Nov 2023





Ong Song Yi
Country Manager
Singapore, Thailand, Indonesia



Mlion Corporation
The 12-Years
Story



MLION Corporation

Foundation Steel Solutions



Mlion Corporation is a Foundation Steel Solutions company that focuses on **Waterfront** and **Underground** projects in the Asian region

Underground Projects



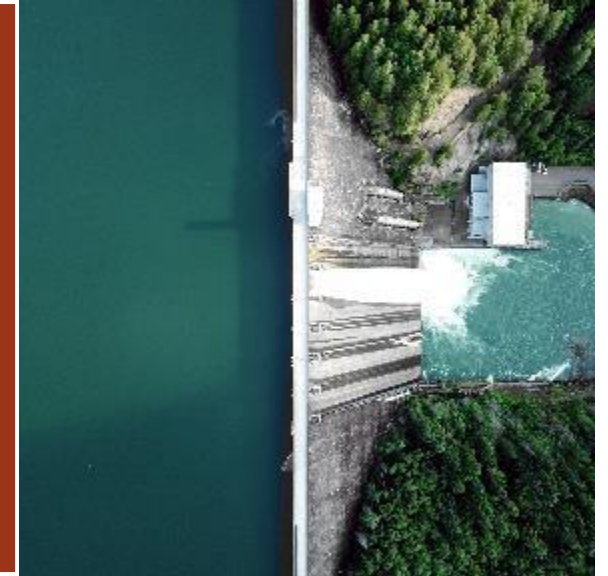
Tunneling

- Cut & Cover
- Station Works
- Diversions
- Viaducts
- Passes
- Roofing



Utilities

- Sewer
- Power
- Water



Buildings

- Basement Works
- Car Parks



Excavation

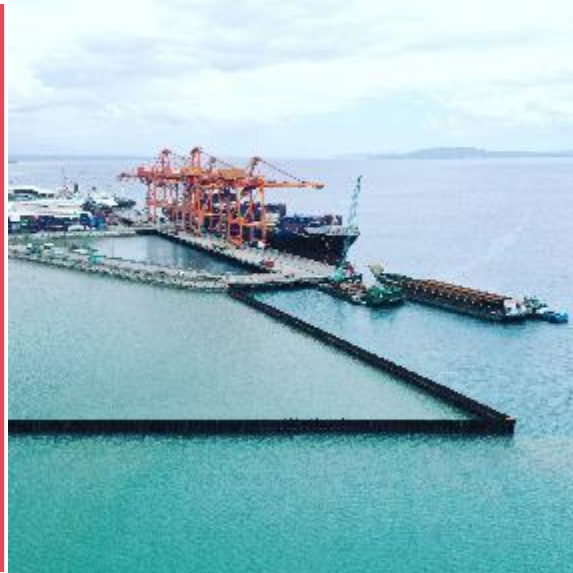
- Earth Retaining Stability Structures (ERSS)
- Piers
- Footing

Waterfront Projects



Ports

- Container
- Dry Bulk
- Coal
- Power Plants
- Wharfs



Airport & Jetty

- Reclamation
- Runway Extensions
- Passenger
- Cruise Terminals



Rivers / Coastal

- Coastal Protection
- Revetments
- Tidal Walls
- Dredging Works
- Storm Protection
- Deepening of Rivers
- Flood Protection



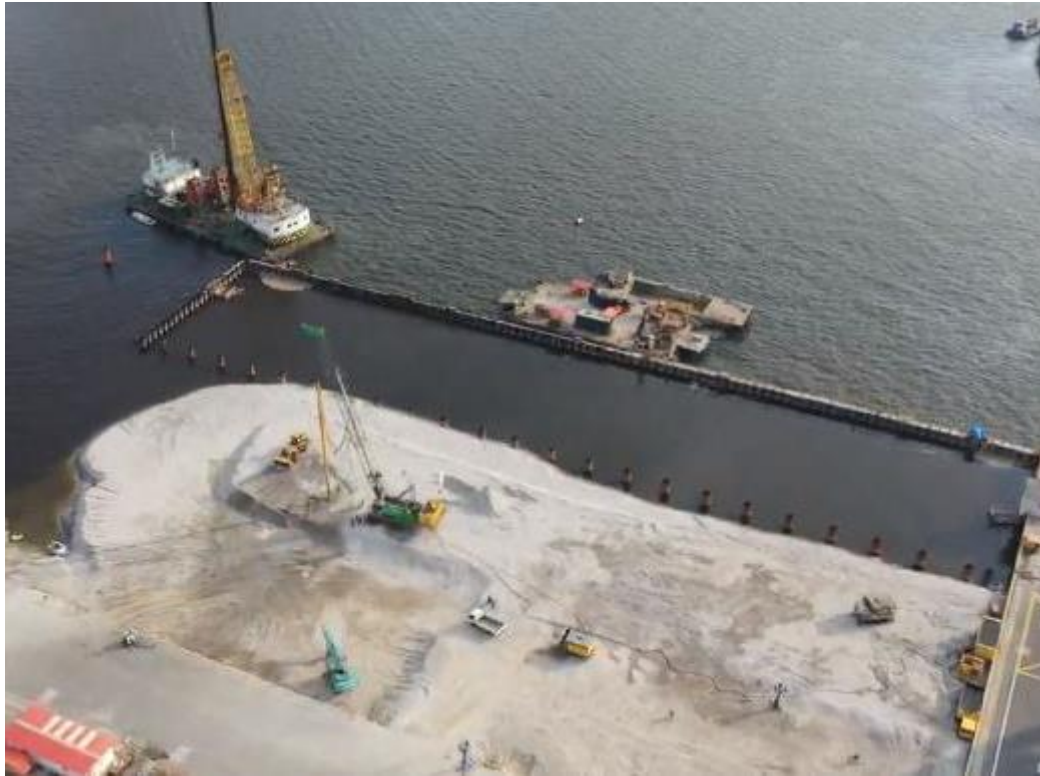
Bridges

- Piers
- Footing

Mlion Port Projects



Mlion Port Projects



Mlion Products



MHZ
Sheet Piles



HAT Type
Sheet Piles



FSP
Sheet Piles



Flat Web
Sheet Piles

Mlion Products



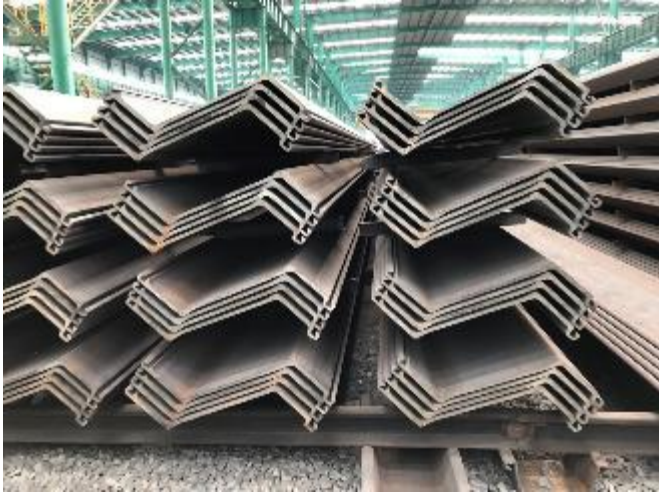
Steel
Beams



Steel
Pipes



Crane
Rails





Our Markets



Our Factories & Offices

We are located on various locations:

Offices

Singapore
Malaysia
Philippines
Indonesia
Thailand
Taiwan
China
Timor-Leste

Factories

China (Exclusive/OEM)
Japan
Korea
Europe (Exclusive)
Philippines (Owned)

Storeyard Locations





THE STRAITS TIMES

Singapore's Fastest Growing Companies 2022

In collaboration with **statista**

2019 - 2023

FT FINANCIAL TIMES | **HIGH-GROWTH COMPANIES ASIA-PACIFIC 2022**
statista

2019 - 2022



2019 – 2023
2021 - Internationalisation

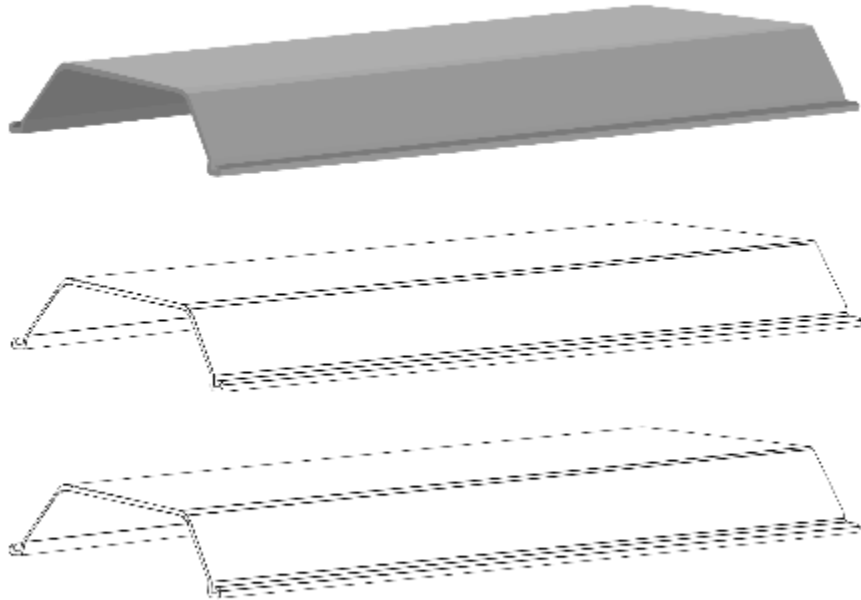


Market Share

Steel Sheet Piles

Mlion Handles One in Three

Sheet Piles in SEA



Market Share in Core Markets

Southeast Asia Market Share: 550,000 tons over the last three years, comprising of 29%.

In 2022 Mlion moved 153,000 tons of Sheet Piles within Southeast Asia.



Carbon Footprint

1.8 tons of CO₂ for every ton of Steel Produced.

Steel and **Cement** each contribute **8%** of the world's Carbon Footprint

Blast Furnace

Blast Furnaces are used for **70%** of the world's steel production

They use **Coal**, which creates a high carbon footprint





Electric Arc Furnace

Lower Carbon Emissions as compared to Blast Furnaces

More than **50%** Carbon Emissions reduction

Reduces Carbon Emissions per ton from **1.8 tons** to **0.8 tons**

Mlion Corporation

Sustainability and Innovation Champion

INNOVATIVE
SOLUTIONS
REDEFINED





United Nations
Global Compact

ecovadis

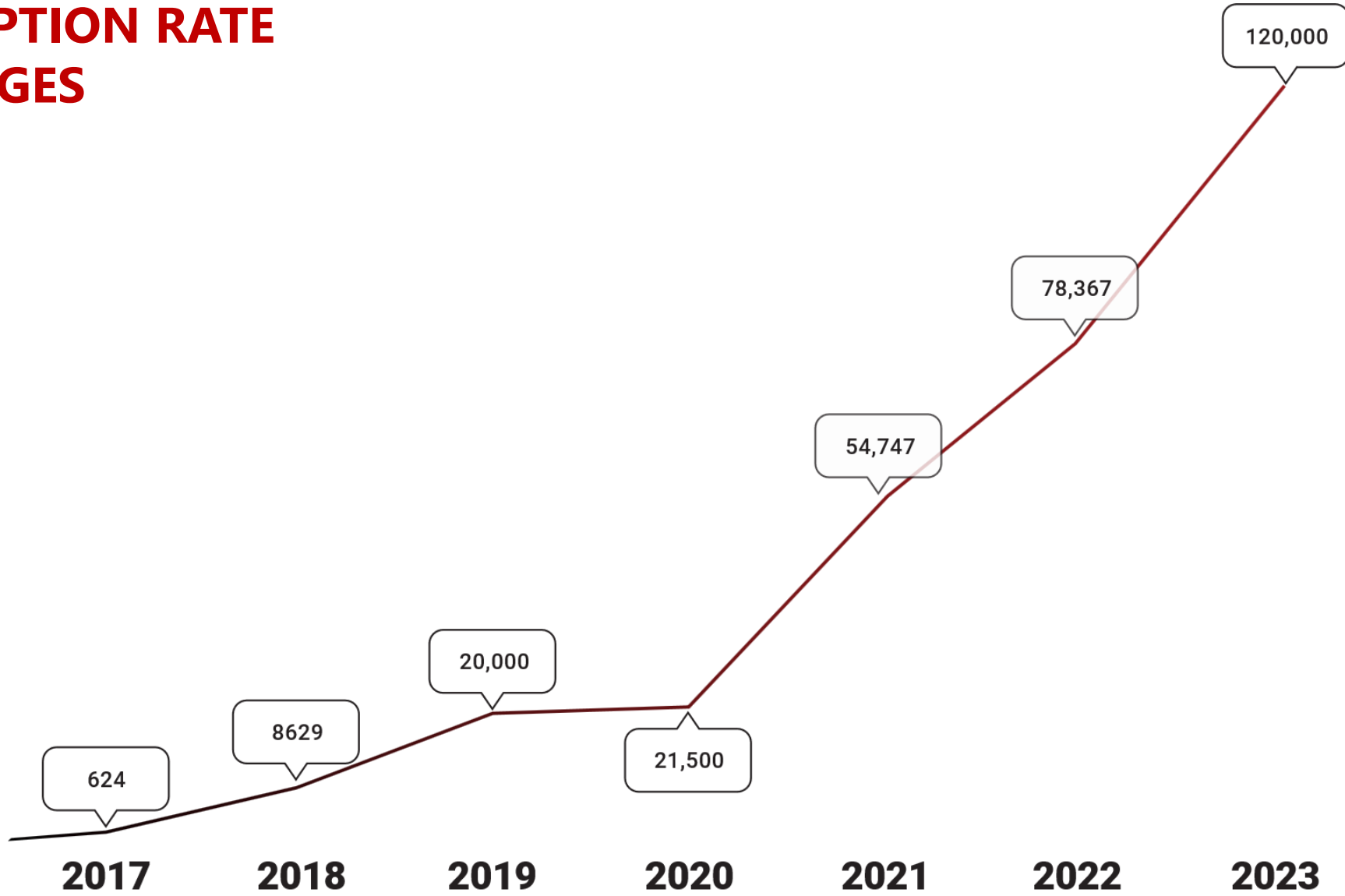


TEMBUSU

Asia



MHZ ADOPTION RATE IN TONNAGES



MHZ HOT ROLLED SHEET PILES TO MARKET

303,867 TONS

TOTAL CO2 EMISSIONS PREVENTED TO DATE

136,740 TONS

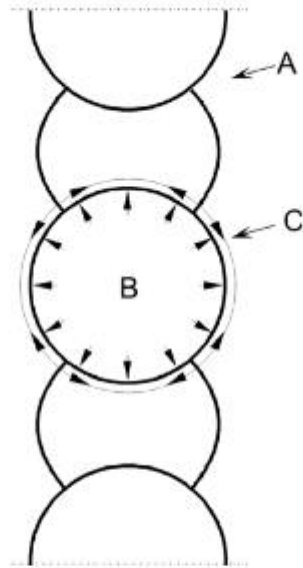




Open Cell Technology

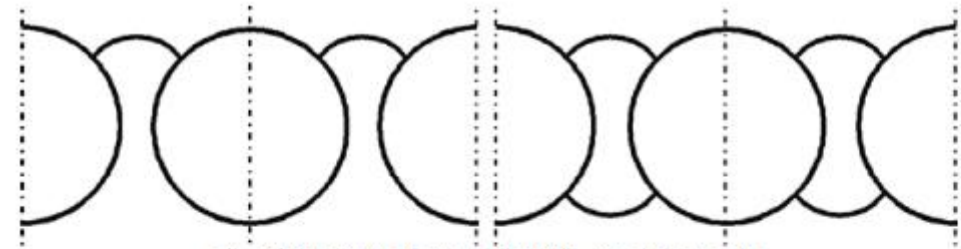
Cellular Technology

Circular Cofferdam

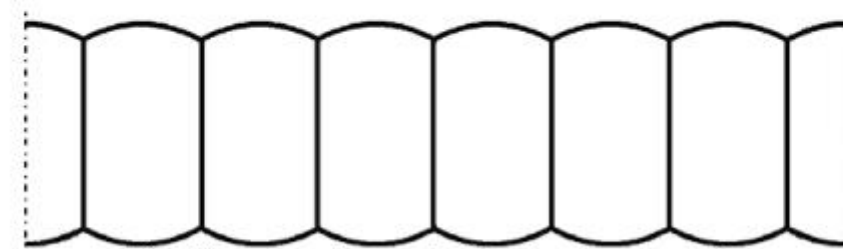


A T-junction; B Internal pressure;
C Circumferential tensile force

Figure 1-3: Cellular cofferdams



a) Structure formed with circular cells

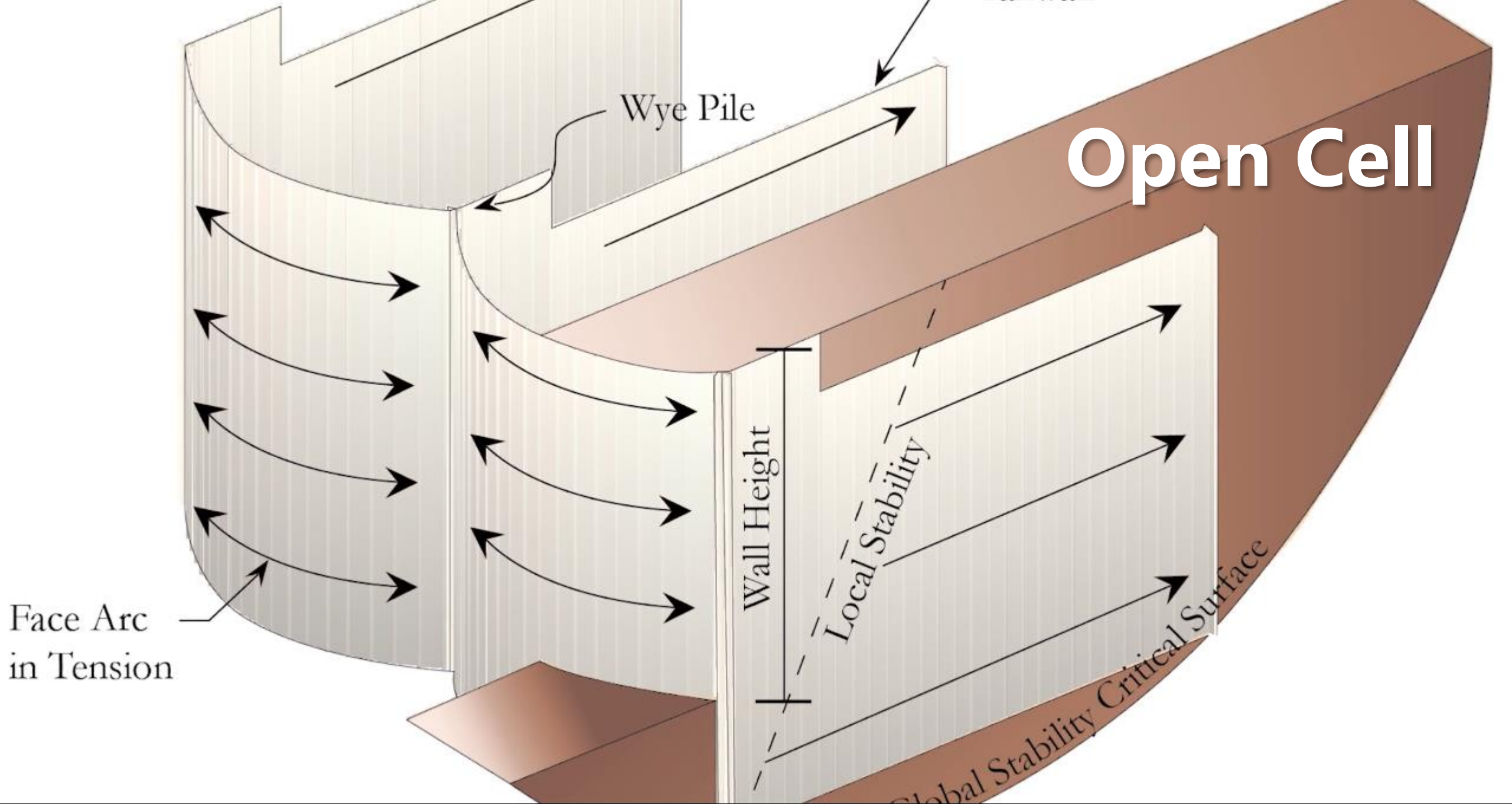


b) Structure formed with diaphragm cells

Figure 1-4: Examples of cellular structures



Flat Web Sheet Piles





Open Cell





VSP-EXL

Open Cell



Smothers Park | City of Owensboro
Owensboro, KY



Gates Landing | NLRPA
Tiptonville, TN



Open Cell



Taiheyo Cement

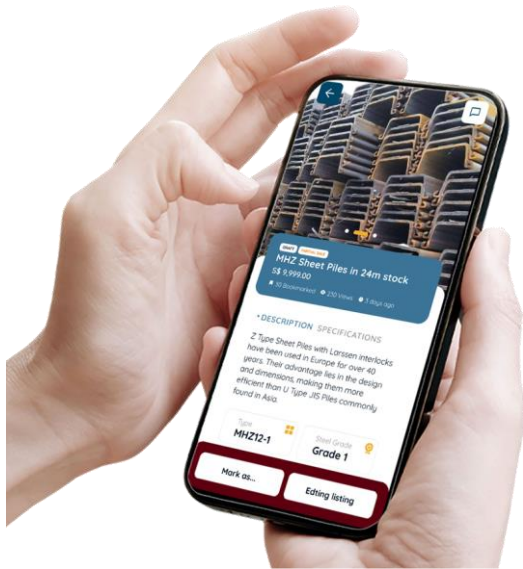
- Nippon Steel Flat Web Sheet Piles
- 40% Weight Savings
- Design saved owner 60% Cost
- PND Jointly Designed
- Structure Survived Cebu Typhoon 2021





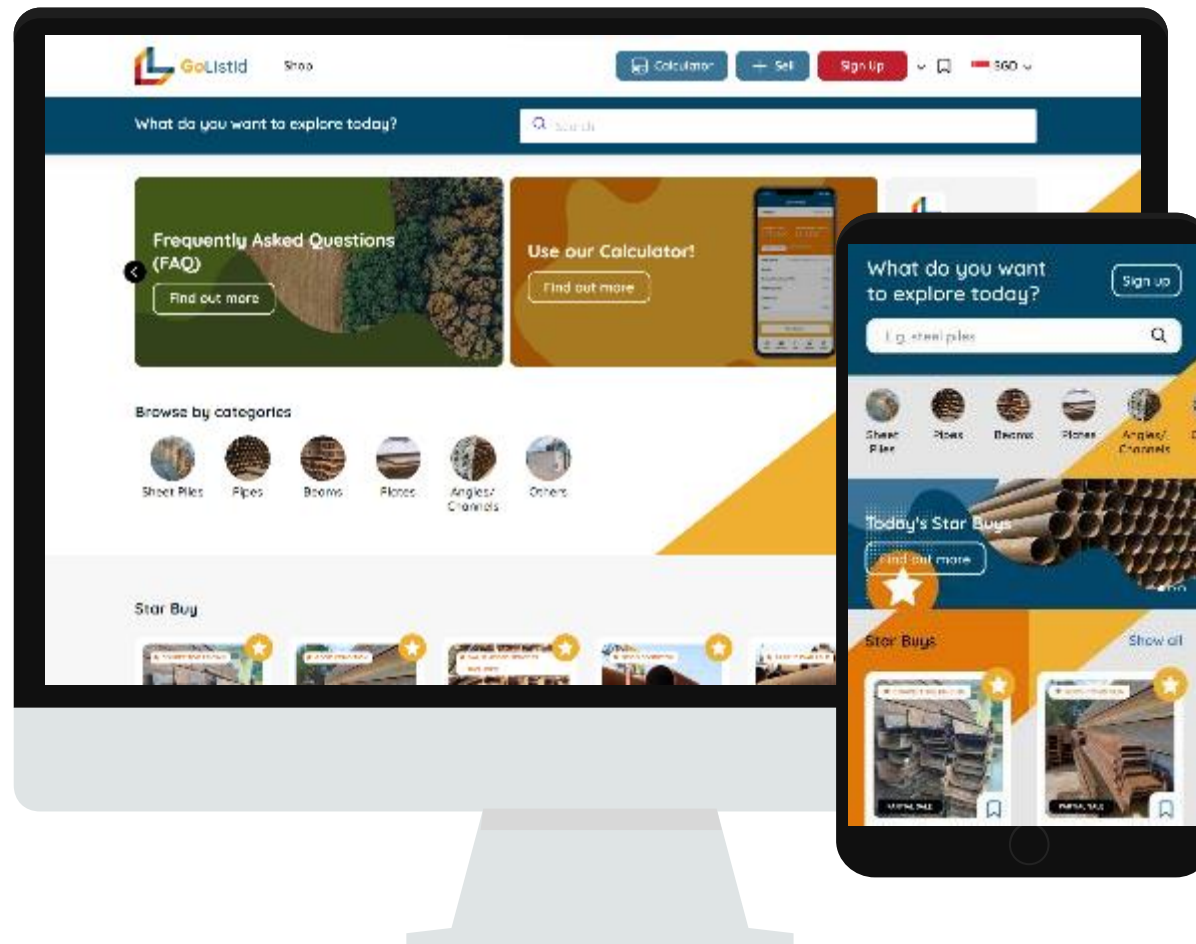
Innovations

Mlion Corporation Pte Ltd



INNOVATIVE
SOLUTIONS
REDEFINED

OUR SOLUTIONS



A **B2B digital platform** for buying and selling pre-owned steel, seamlessly **connecting** the **market participants**

Increases the lifetime value of steel and **reduces** the industry's **carbon footprint**



**Steel Markings on these items in brand new
Now starting to drop off.**



Rapide & Endure

NO. H25-3-141
DATE: 2021.11
BUNDLE WEIGHT: 2400 KG
KANGSHAN IRON & STEEL CO.
MADE IN CHINA

 KANGSHAN IRON & STEEL CO., LTD.

Product	SPHC	Grade	Q235B
Supply	SEASIDE	Roll	1500
Est. No.	823050008	Weight	2400 KG
Order No.	22 000 8404 0	Weight	2400 KG
Origin	CHINA	Standard	GB 700-2006





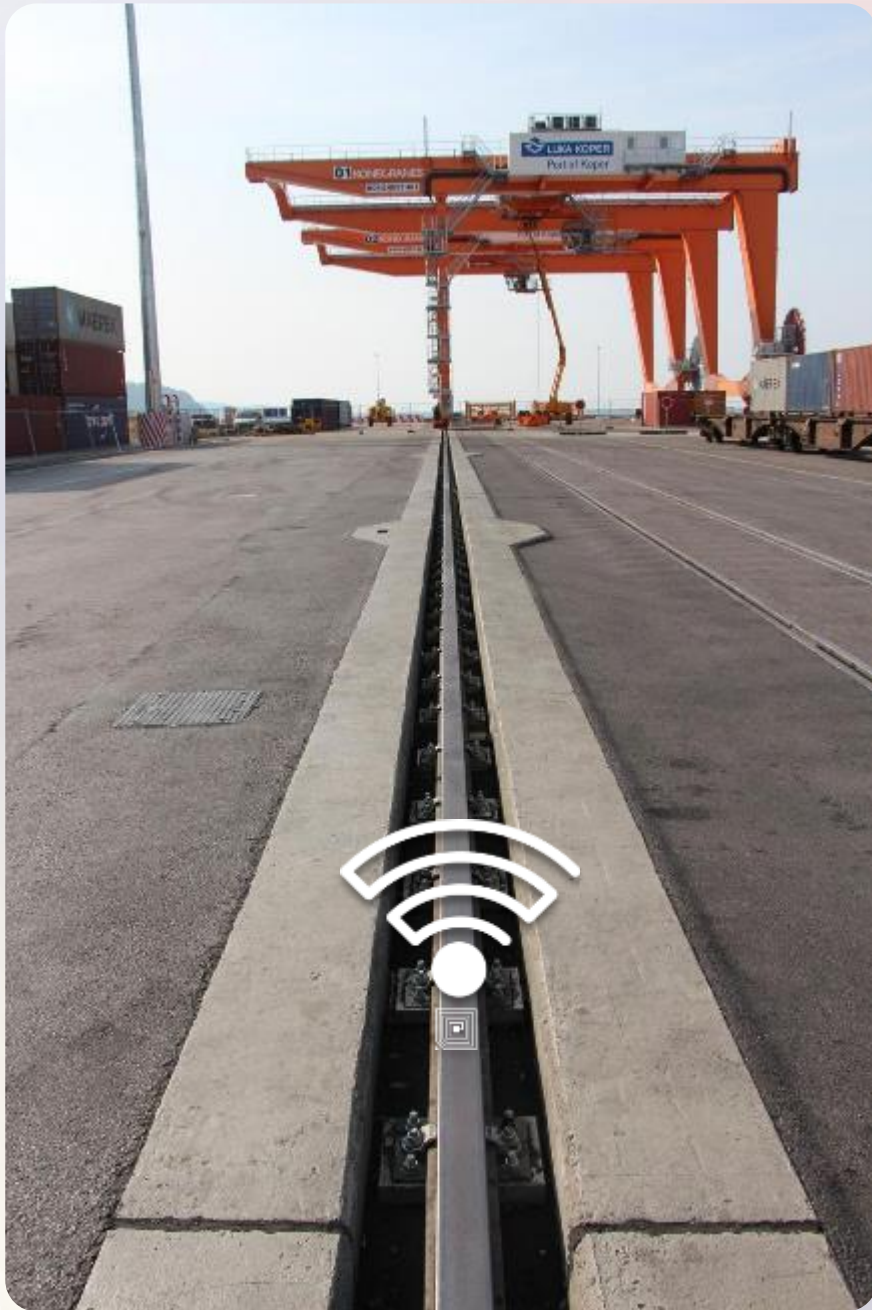
Endure













Pressure



Motion



Temperature



Strain



Light



GoListid



GoTagID

Commercial Launch

11 August 2023



Mlion is:

- **Largest Sheet Pile distributor in SEA**
- **Member of UNGC**
- **Undertook Ecovardis assessment**

MHZ and Open Cell

- **Saves weight and reduces carbon emissions**

GoListid and GoTagID

- **Innovative solutions for a more sustainable future**





MLION CORPORATION PTE. LTD.

Pioneering Innovative Solutions for Tomorrow's Challenges

sales@mlioncorp.com

Follow us:

