



Promoting Ports Cooperation in West and Central Africa – PMAWCA Example

***15th Intermodal Africa Conference, Accra, 7 – 8
April 2016***

**By Michael LUGUJE
Secretary General,
Port Management Association of West & Central Africa
(PMAWCA)**



Port Cooperation in West and Central Africa

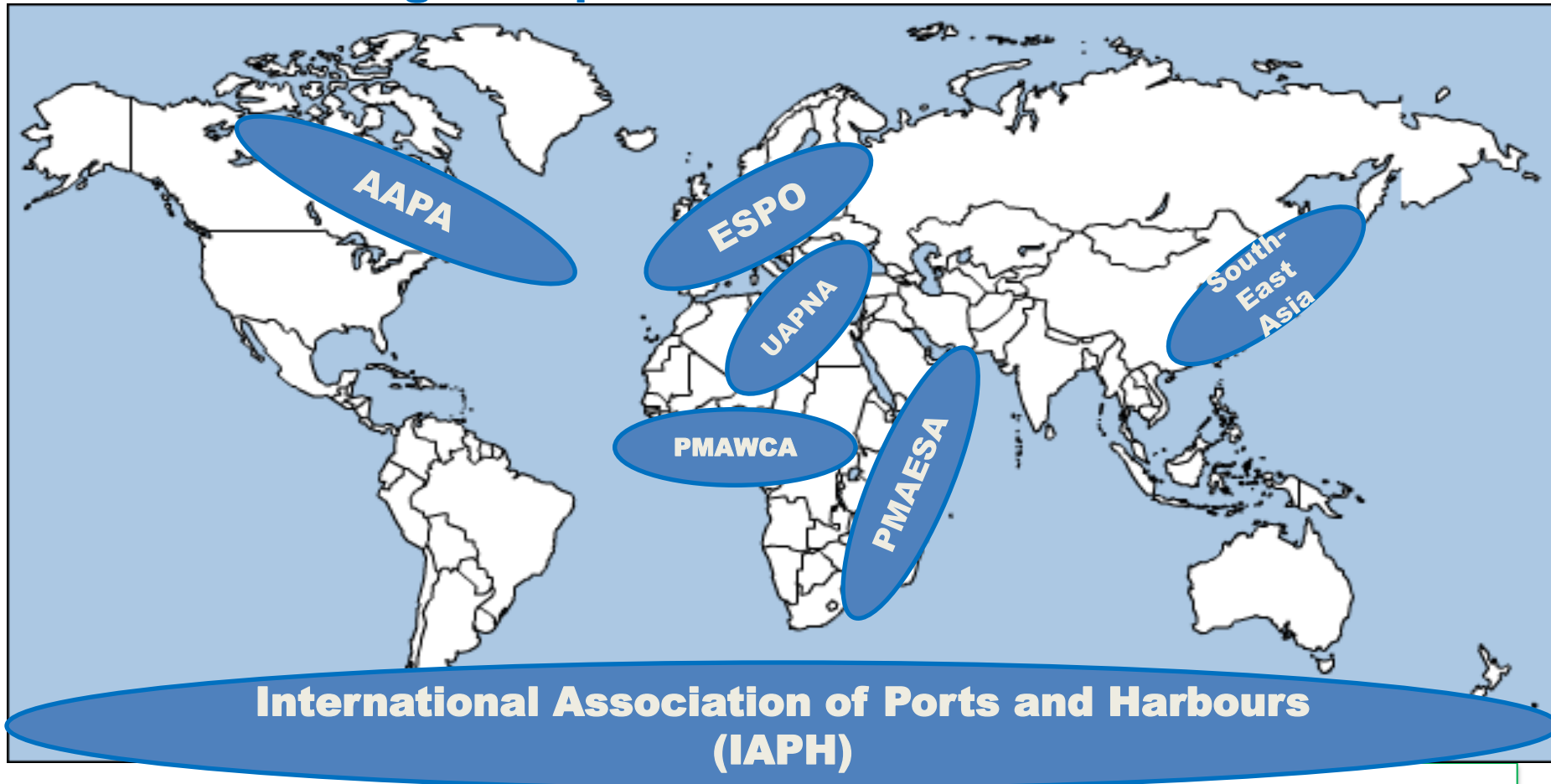
OUTLINE:

- 1. Port Cooperation – the Global picture**
- 2. Port Cooperation in Africa**
- 3. The PMAWCA example of cooperation**
- 4. PMAWCA – so far; and going forward**



Port Cooperation in West and Central Africa

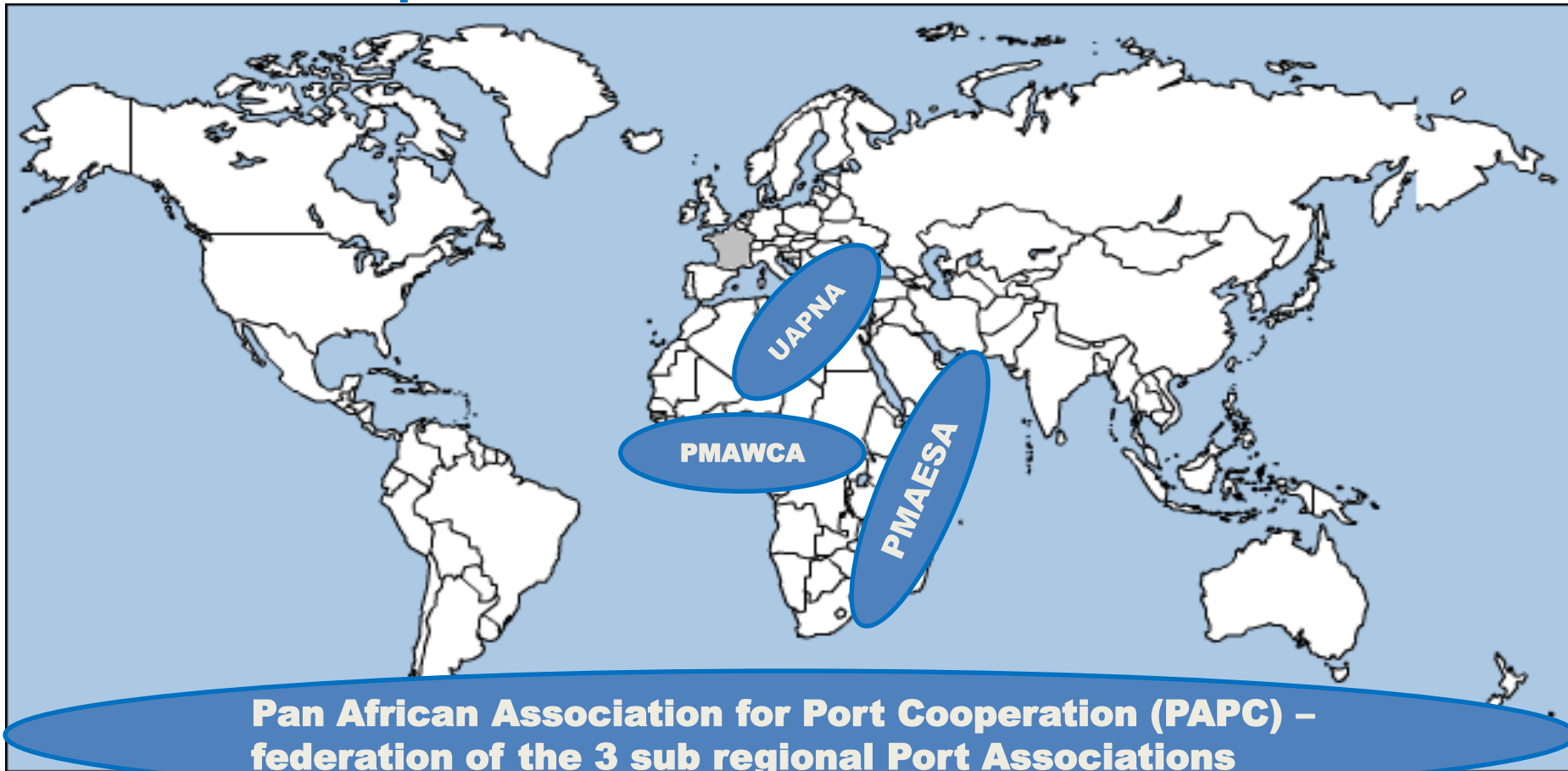
What is the global picture?





Port Cooperation in West and Central Africa

The African picture





Port Cooperation in West and Central Africa

Some facts: Africa's:

- Share of world trade: 3%
- Intra African trade: 12%
- Share of world exports: 2.5%
- Owned Ships – 1.2% of world total
- Ports handle: 6% of world cargo tonnage and 3% of world total container traffic
- Port throughput projected to rise from 265m (2009) to 2 billion (2040)





Port Cooperation in West and Central Africa

The PMAWCA region:

- Over 11,983 km of coastline;
- Annual maritime import/export traffic of over 250 million tonnes;
About 5 million TEUs (2014);
- Extractive minerals exports :bauxite, manganese
- Heavy deposits of hydrocarbons (crude and gas);drilling and exporting crude in commercial quantities.
- Very rich fish stock
- Among the fastest growing regions (GDP growth of 3% - 6% p.a.)





Port Cooperation in West and Central Africa

The PMAWCA case:

- Established – 1972
- 20 Coastal States
- 3 landlocked States
- 24 Port Authorities as members
- 9 Associate members
- 4 Observer status members





Port Cooperation in West and Central Africa

PMAWCA Objectives:

- A platform for cooperation among member ports to promote efficiency in the management of ports
- A forum for the exchange of knowledge and best practices in port infrastructure development and service delivery
- Framework for cross cooperation with transport sector and allied bodies to address issues of common interest





Port Cooperation in West and Central Africa

The PMAWCA case:

ORGANS:

1. Council of Managing Directors
2. Board of Directors (6 members)
3. Secretariat (based in Lagos)
4. Technical Committees for:
 - i. Port safety/security, environment & Operations
 - ii. Port Infrastructure Dev't
 - iii. Port Finance & Econ. Studies
 - iv. Port Admin/Legal Affairs





Port Cooperation in West and Central Africa

The PMAWCA case: Other Tech bodies:

1. **Regional Training Centre
(in Cotonou)**
2. **Harbour Masters' Network**
3. **Professional Women's Network**
4. **Port Environment Management
Focal Points**





Port Cooperation in West and Central Africa

The PMAWCA case: Capacity building through:

1. Technical Committee deliberations
2. Training Seminars/workshops
3. Annual MD's Round Table Conferences: so far discussed:
 - Port concessions
 - maritime piracy & port security
 - port costs
 - Quality & ISO Certification, etc
4. Collaborative training activities with IAPH, IMO, UNEP, etc





Port Cooperation in West and Central Africa

The PMAWCA case: Key initiatives:

1. **Roster of Experts (launched 2015)**
2. **Technical Assistance programme (support to weaker members)**
3. **Ports performance Awards (pilot edition in Sept'15)**
3. **Ebola solidarity fund (support to ports in worst affected countries by EVD)**





Port Cooperation in West and Central Africa

The PMAWCA case: Key projects (ongoing):

1. **Harmonized Port Performance Indicators (10 standard indicators adopted – common parameters for measurement being developed)**
2. **Guideline on Port Concessions (To be developed in partnership with the World Bank)**
3. **Study on the competitiveness of Africa's ports (proposal being considered for funding by the AfDB)**
4. **Study on the Socio-economic impact of port concessions in West Africa (to be funded by ECOWAS Commission)**
5. **Study on PMAWCA region's cruise tourism potential**





Port Cooperation in West and Central Africa

Maritime industry (Port/shipping) Challenges are a myriad:

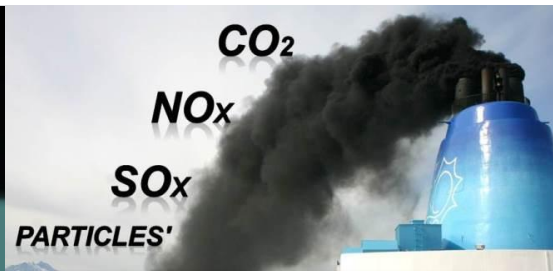
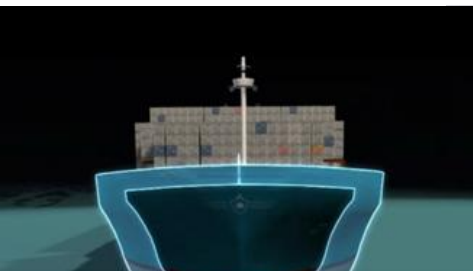
Seaside

- Size of vessels.
- Turnaround times.
- Financial resources (for deeper approach channels/berths, wider turning basins).
- Environmental pressure (reduce water & air pollution).



Land side

- Cargo arrival - “bunched-up”.
- Cargo handling time.
- Financial resources (for cargo handling equipment, bigger storage facilities).
- Environmental pressure (reduce noise, air, water and light pollution).





Port Cooperation in West and Central Africa

Maritime industry (Port/shipping) Challenges are a myriad:

Seaside

- Size of vessels.
- Turnaround times.
- Financial resources (for deeper approach channels/berths, wider turning basins).
- Environmental pressure (reduce water & air pollution).



Land side

- Cargo arrival - “bunched-up”.
- Cargo handling time.
- Financial resources (for cargo handling equipment, bigger storage facilities).
- Environmental pressure (reduce noise, air, water and light pollution).

In order to effectively mitigate these challenges, Ports, Countries, and Governments Have to Cooperate, Collaborate and Coordinate efforts: and PMAWCA, just like all similar bodies globally, is doing just that!





***Cooperation Is Not
an Option;
It is an Obligation!***

THANKS FOR YOUR KIND ATTENTION

mluguje@agpaoc-pmawca.org; luguje@gmail.com