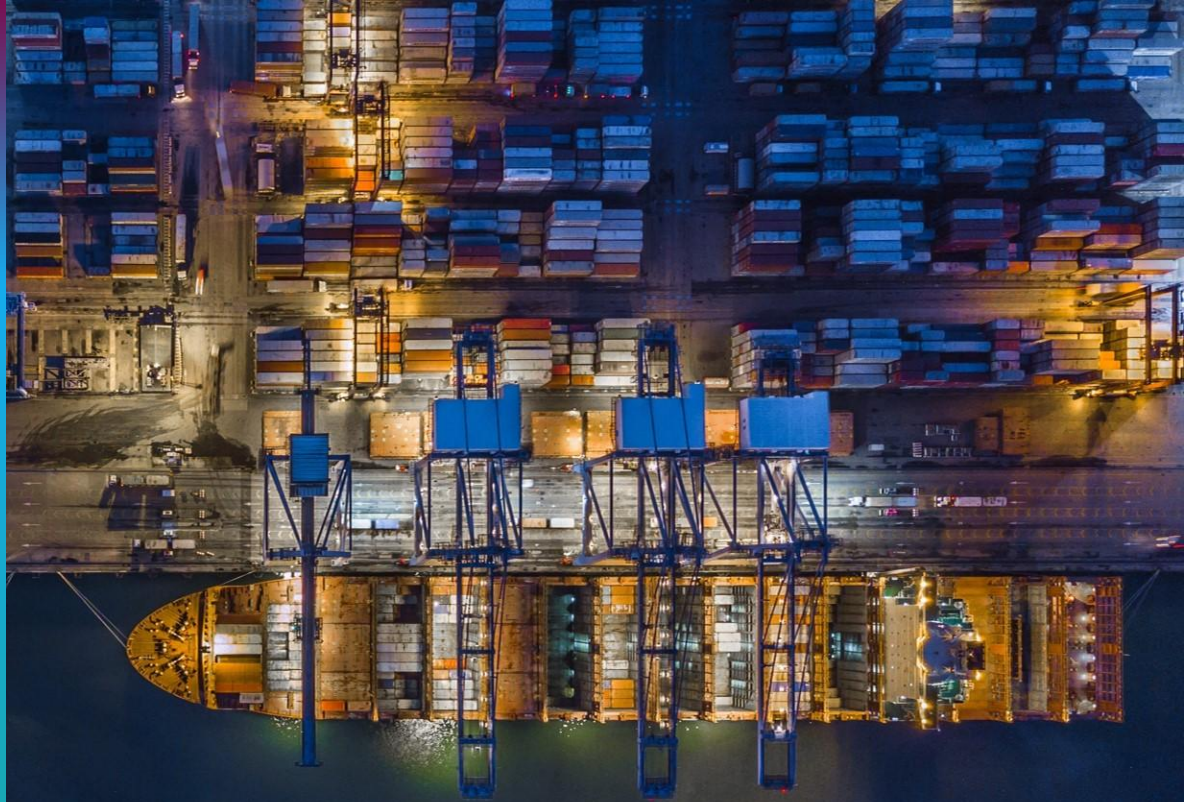




# Helping Terminals operate efficiently - In any Situation

Laks Krishnamoorthy



# Disaster Recovery , BCP And Remote Expertise

## Lockdown

In this Pandemic, though most portions of the world there is a lockdown, the functioning of ports is deemed essential.

## Terminal's need

With the restrictions on movement, the terminal operators need a way for their staff to come to work. The terminals would love to keep only essential staff and if they can let some of them operate from outside the terminal.

## Social Distancing

With social distancing being the norm the terminal operators have to find alternative working arrangements to accommodate the control and planning teams that are normally seated very close to each other.

## On Prem Environment

Traditionally our customers have the software installed on prem and most of the users have their desktops connected to on premise server. However these are not accessible remotely without a VPN infrastructure

## Connectivity Issues

Many of the planners and Ops control can do their work from home. However in most of the terminals, the operators and planners do not have company provided devices with VPN and might not have good connectivity.

## New ideas

Given that most of our customers have on premise install, how can we help them during this disaster and provide them a Business Continuity Plan and offer expertise remotely and solutions that would help right away?

# Remote Operations Suite

## Primary Offerings



COMPASS

- Visual workflow management application digitizes the vessel planning process.



BERTH WINDOW  
MANAGEMENT

- Digitizes and shares berth plans with your internal staff as well as customers and carrier partners.



OPSVIEW

- Provides real time KPI dashboards to monitor operations and identify operational bottlenecks

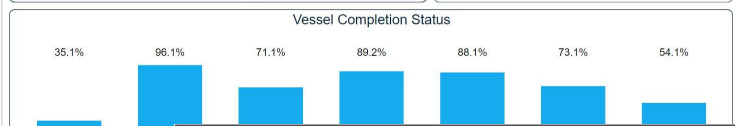
[Cancelled Vessel Visit Demo](#)



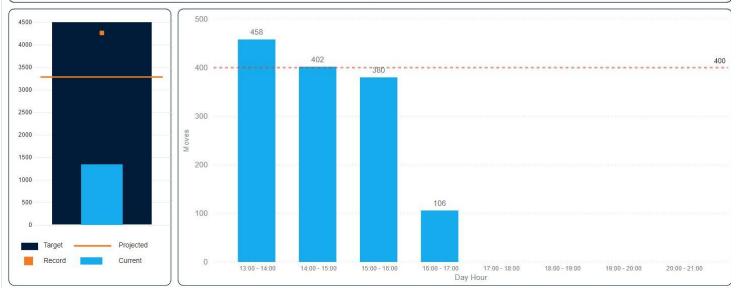
# What is Navis OpsView? Real-Time Operations Insights on Mobile Devices and Big Screens



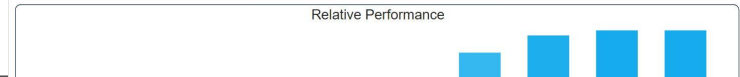
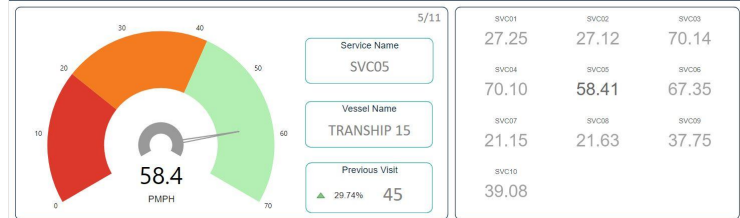
**navis O2** SLA Dashboard



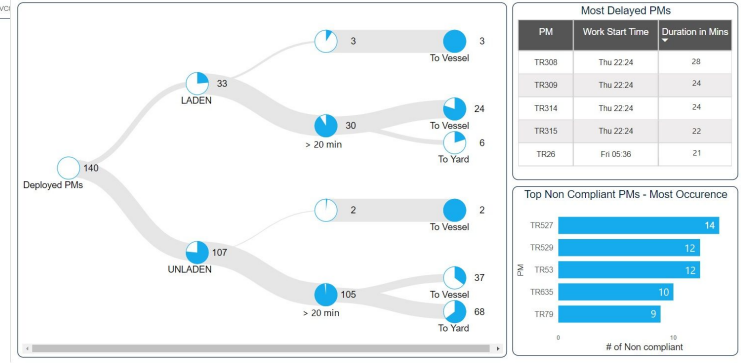
**navis O2** Container Moves - Current Shift



**navis O2** PMPH Live



**navis O2** PM Compliance





**Joe Schofield**

Just wanted to share that the o2 Navis team onsite are going above and beyond to deliver a first class product. I have gone from seeing productivity on a excel spreadsheet once every 25min to seeing it on my watch. First call result. Thank you 🎉🎉🎉

10:13 PM





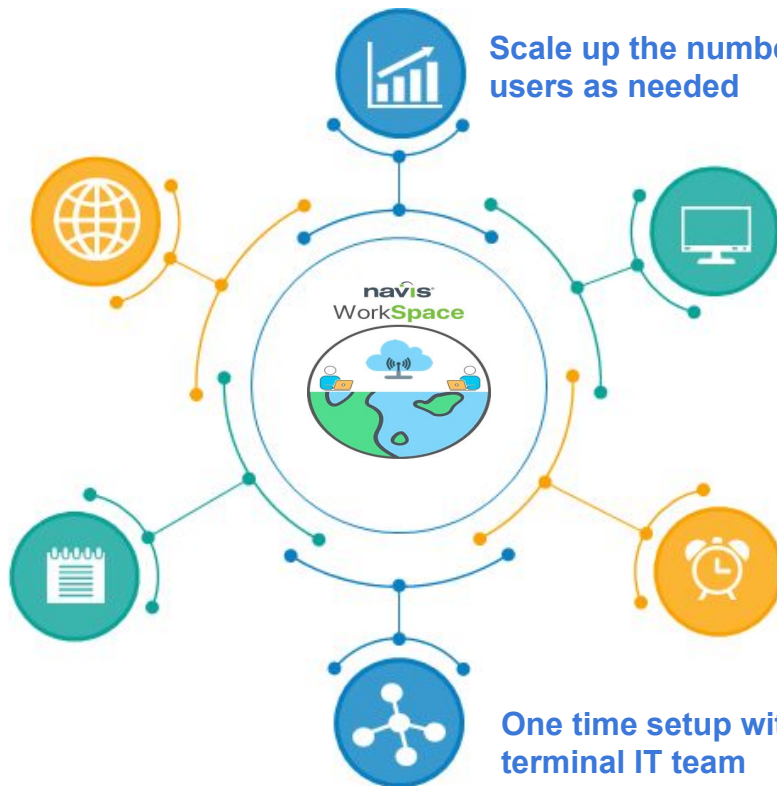
navis®

# navis® WorkSpace



Secure method of connecting from anywhere in the world and run operations

Leverage the on premise install. Need one 5mb/s connection to support 30 users from terminal to cloud setup.



Scale up the number of users as needed

Light footprint on the client desktop - Need less than 5mbps connection and an internet connected browser to start.

Allows remote monitoring

Always on or Activated on Demand

One time setup with the terminal IT team