



Global Macroeconomic Impact on Maritime Transport During COVID-19 and the Road to Economic Recovery

Thursday 16 April 2020 at 5pm - 6pm HKG

Dr Mark Yong



Our Play: Converged Solutions addressing all players in the global supply chain ecosystem



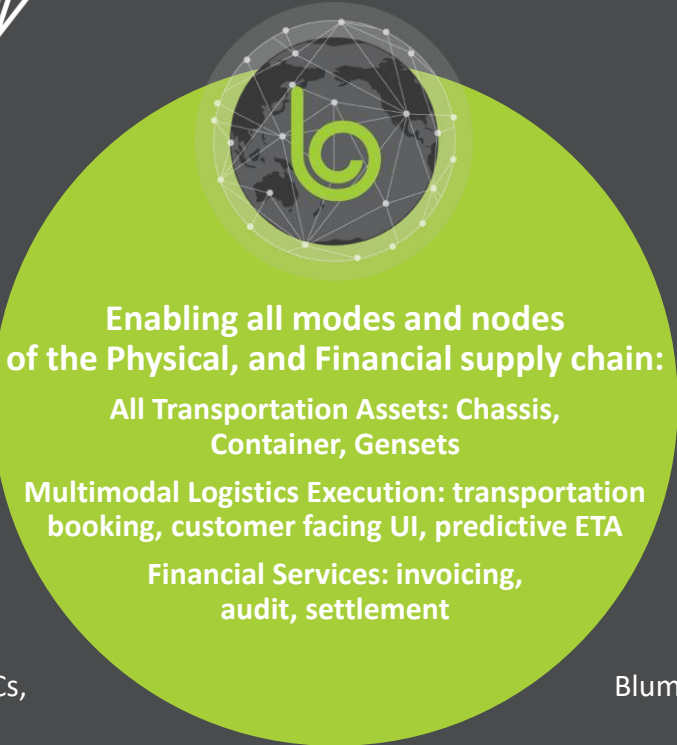
Blume can manage ULDs and other air assets, obtain information regarding flight status



Blume enables All U.S. Class 1 railroads including Union Pacific, Norfolk Southern, CSX, Canadian National, BNSF, Kansas City Southern Lines, Canadian Pacific



Blume enables 14 ocean carriers include Hapag Lloyd, ACL, ONE, CMA CGM, Evergreen, COSCO, etc



International Service Providers Including 3PLs, LSPs, IMCs, NVOCCs, Freight Forwarders, 4PLs
Blume enables Expeditors, Kuehne & Nagel, BNSF Logistics, Coyote Logistics, JB Hunt, CH Robinson

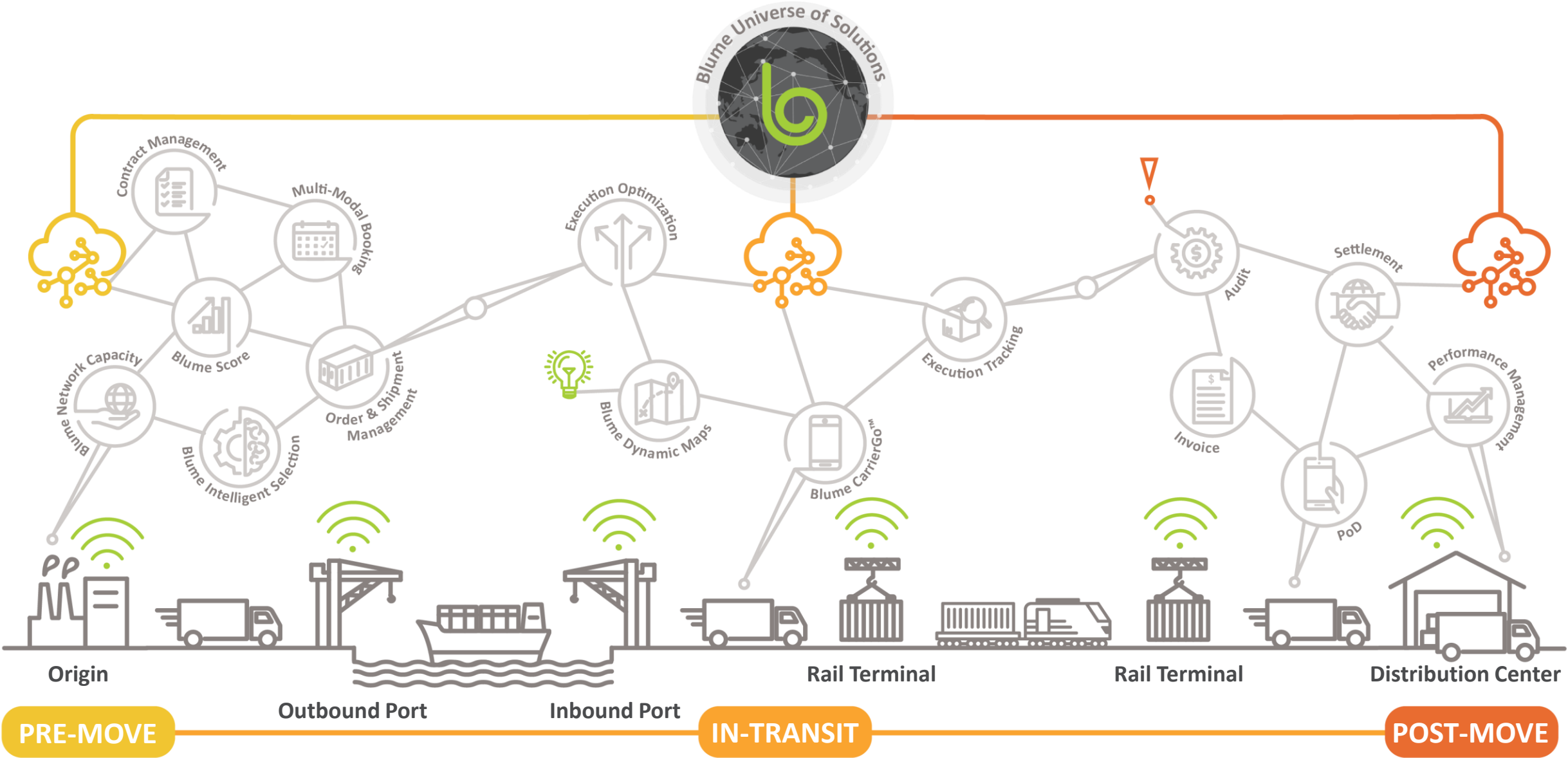


Blume enables a "white label" customer UI for major LSPs servicing the world's largest Retailers & Manufacturers



8000+ global motor carrier companies

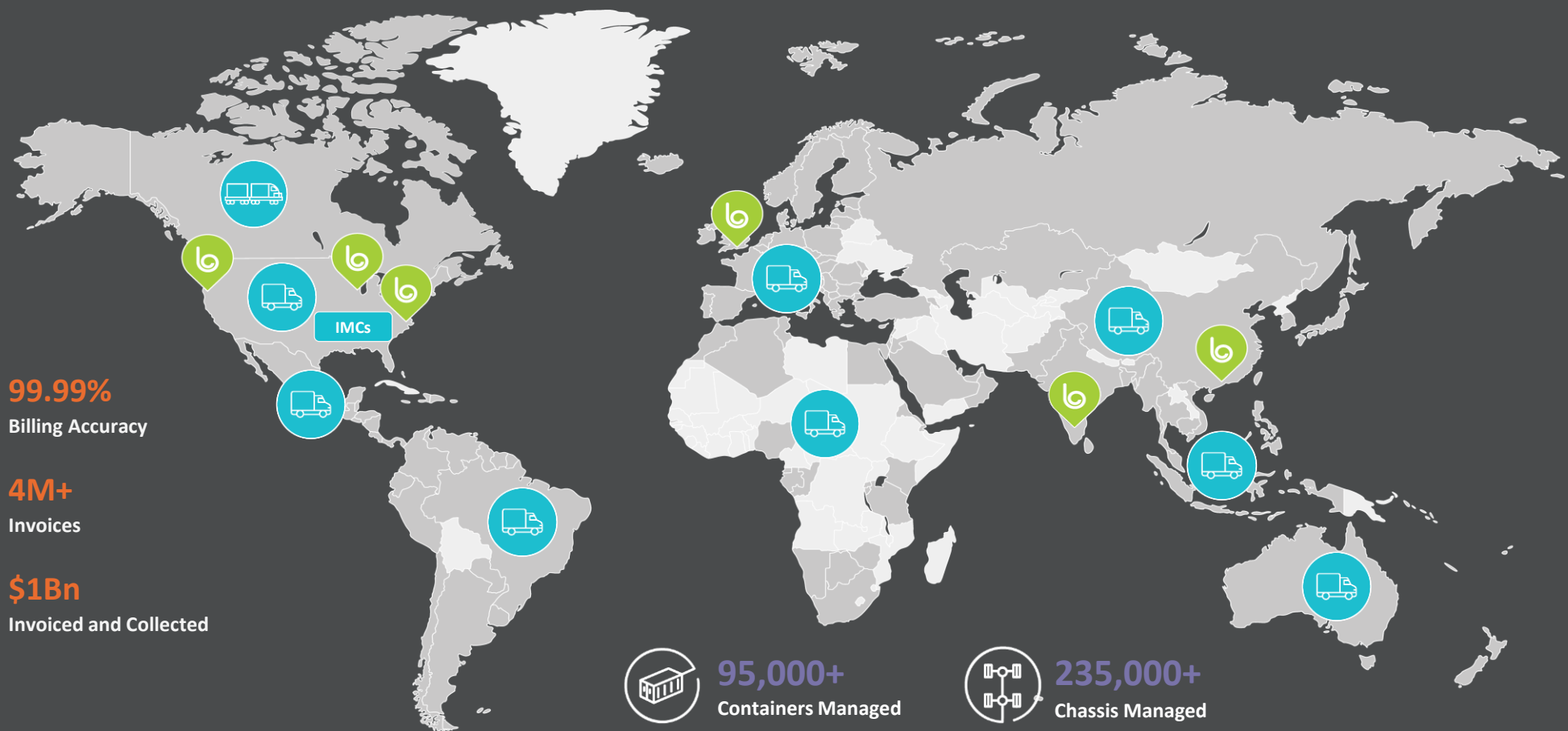
Multi-Modal Ecosystem on a Collaborative Digital Platform



Targeted Solutions for Every Point of a Shipment's Journey

A Growing, Intelligent, Connected Map for Global Trade

119 Countries **22** Languages **181M+** Annual Events **70+** TMS Integrations **All** Class 1 Railroads **1100+** Terminals Depots Rail Ramps **6** Offices Globally



24/7/365

Customer Support

9,100+ Motor Carriers

Top 19 Ocean Carriers

200+ Air Cargo Carriers

90,000+ Daily Flights

99.99% Billing Accuracy

4M+ Invoices

\$1Bn Invoiced and Collected

95,000+ Containers Managed

235,000+ Chassis Managed

● Modes and Nodes on Blume Network ● Physical Assets ● Network Strength ● Blume ● Connected Countries



Topics to Cover

1, Modes of transportation

- Shipping
- Air
- Inland- Rail and Road

2, Economic considerations

- Countries

3, Other considerations-Sourcing

Thank You!

Email: mark.yong@blumeglobal.com