



**NAMPORT: CARGO AND TRANSSHIPMENT
GATEWAY FOR HINTERLAND AND
LANDLOCKED COUNTRIES IN THE SADC
REGION WEBINAR**

11.11.2020



transnamib
rail it!

1. SOE

- **100% owned by GRN**
- **Rail Operations & Property service**

2. Current TN PPP's

- **Swakop Hotel**
- **GPT – Sleeper factory**
- **Namrail – Railway construction/rehabilitation**

3. Rail infrastructure & Rail Operations

- **GRN owns rail infrastructure**
- **TransNamib sole Rail operator**



KEY FIGURES

- **1,400 employees**
- **Locomotive km's pa. = 2,4m km**
- **Annual tonnage = 1,6 m**
- **Annual Turnover = USD 0.5 m**
- **Asset value = > USD 3 m (Undeveloped & old)**



- ***MoU with the Port***
- ***Institutional Cooperation***
- ***Strategic partnership***



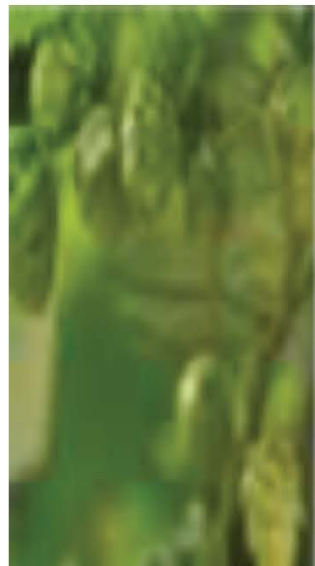
•Port Shunting

- *Dedicated shunting loco at WVB*
- *Automated shunting vehicle – 2021*
- *Container Yard- Provision for a full train length*

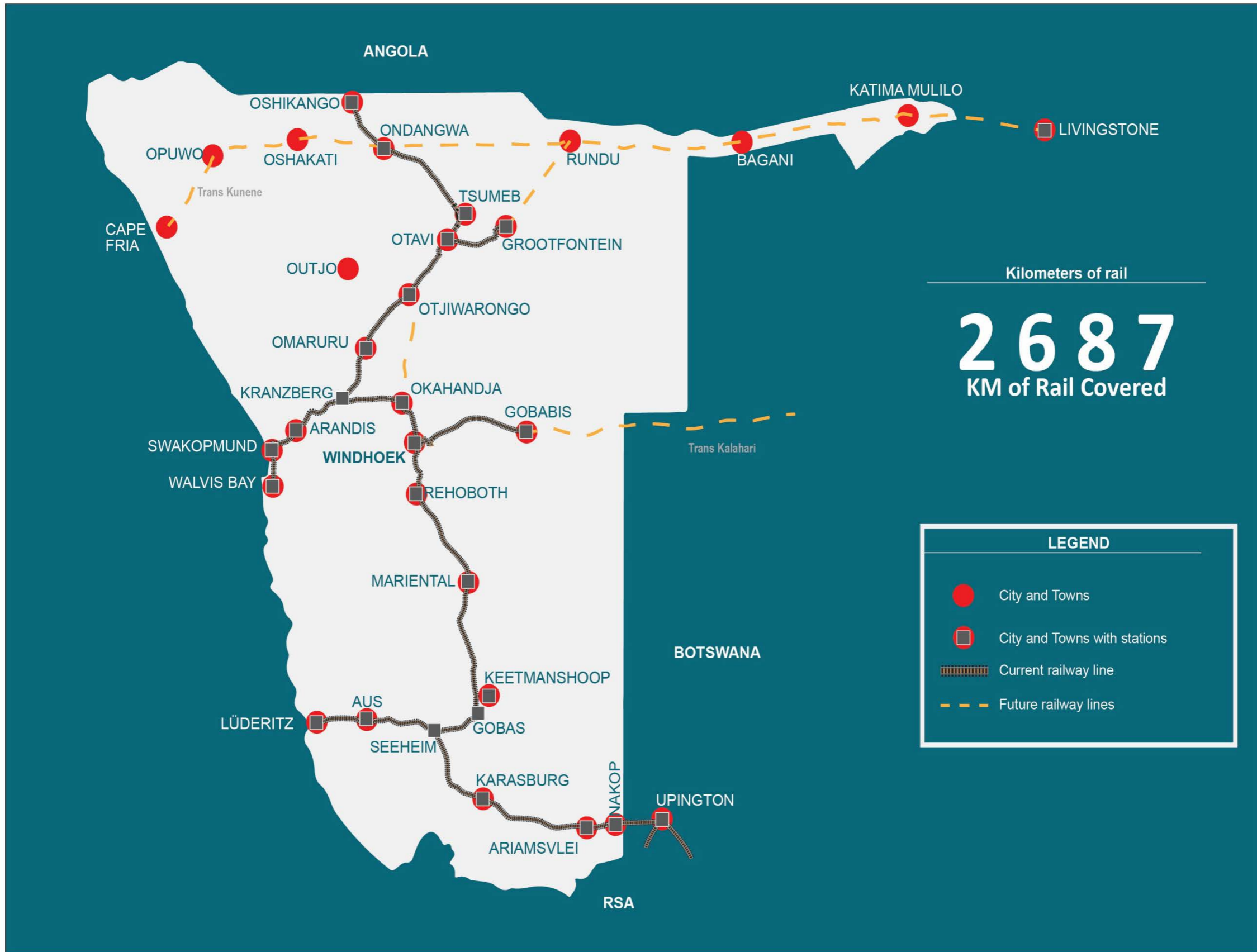
•Port movements

- *In and out of container depots*
- *Look at large volume commodities*
- *Block trains*
- *3-4 Trains per day from Walvis Bay*

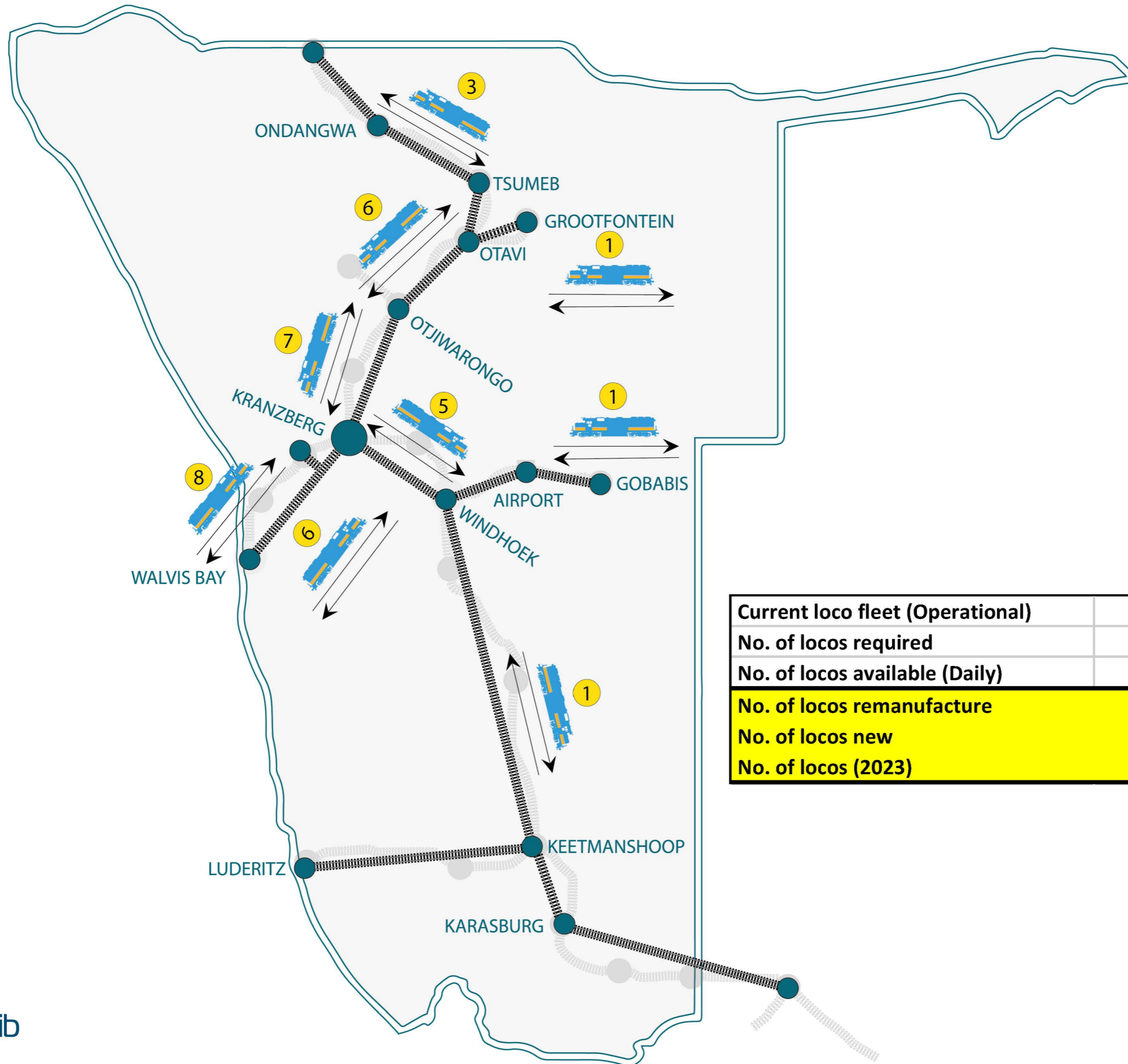
SO WHAT DO WE MOVE IN/OUT PORT?



NAMIBIA RAILWAY NETWORK



NO. OF LOCO'S



Current loco fleet (Operational)	43	
No. of locos required	55	1.5 mt
No. of locos available (Daily)	34	
No. of locos remanufacture	33	
No. of locos new	10	
No. of locos (2023)	86	3.1 mt



transnamib

2. RAIL OPERATIONS - BUSINESS PLAN

- 1. *5 year Business plan***
- 2. *Strategic focus on rail***
- 3. *Strategic objectives***
- 4. *Action plan***
- 5. *Build culture change – employees (PMS)***



STRATEGIC OBJECTIVES



Breakthrough financial performance



Trustworthy customer experience



Organisational excellence



Inspiring and accountable leadership

DELIVERABLES

Break-Even by 2023

3m metric tonnes by 2023

Certified ISO 9001

Best company to work for

STRATEGIC INITIATIVES

Restructure balance sheet

Implement robust Customer Engagement process

Restructure, streamline organisation to focus on core business

Development and implement the TransNamib leadership model

Secure N\$2.5 billion funding

Develop & execute Rail Transport Agreements

Implement TN process model – certify ISO 9001

Develop succession and retention strategies

Asset Management ROA 5%

Develop & execute the Road-Rail strategy

Fit-for-Purpose technology, equipment and infrastructure

Benchmark and participate in the best companies to work for survey

Cost containment; Strategic; Procurement; Eliminate waste

Aggressive Business Development - OTIF Project delivery

Embed safety & environmental care across the value-chain

Execute CAPEX

National Logistic Hub

Robust Corporate Governance & Risk Management

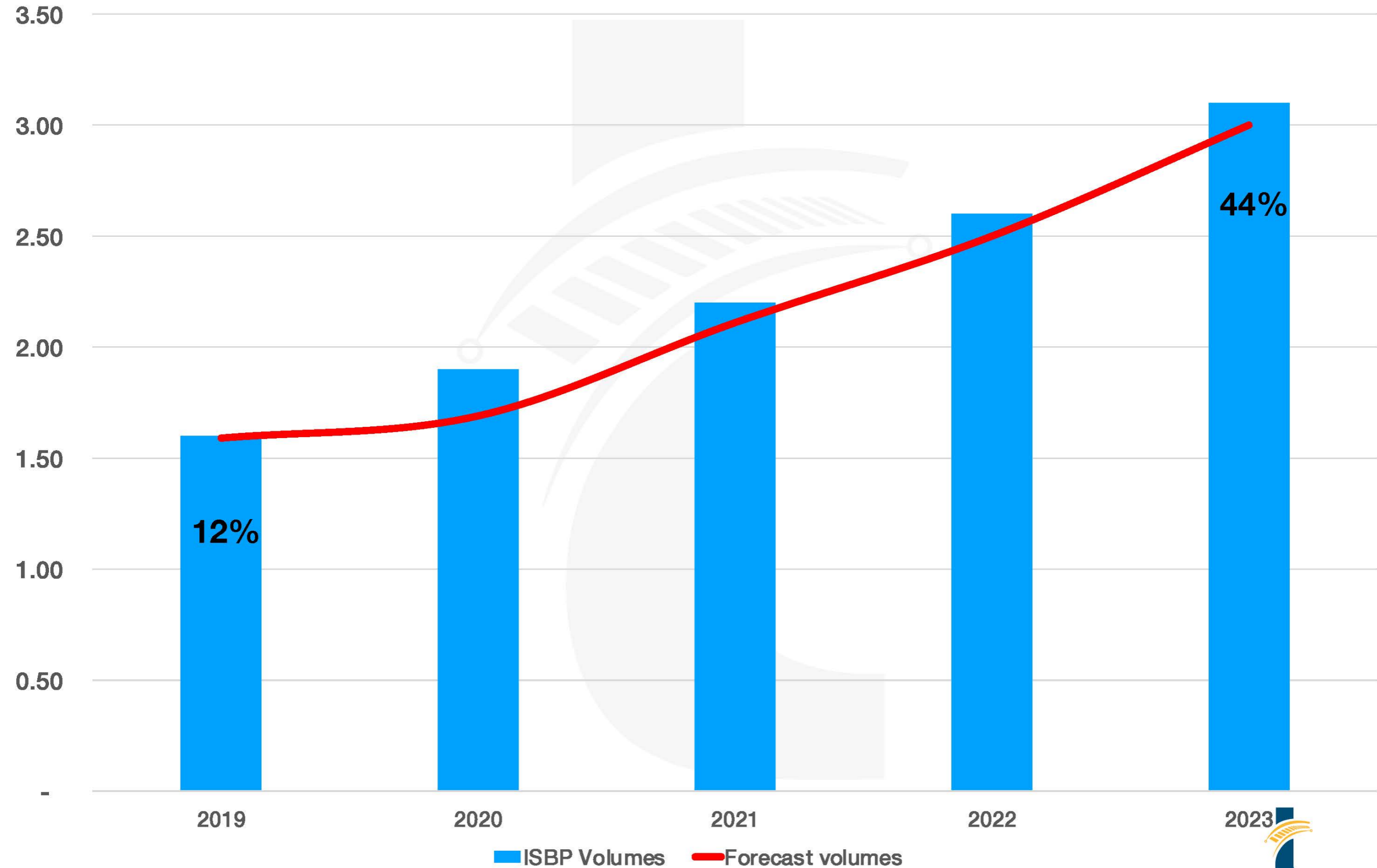
Implement Performance Management System

Recreate Corporate Identity

Implement Change Management

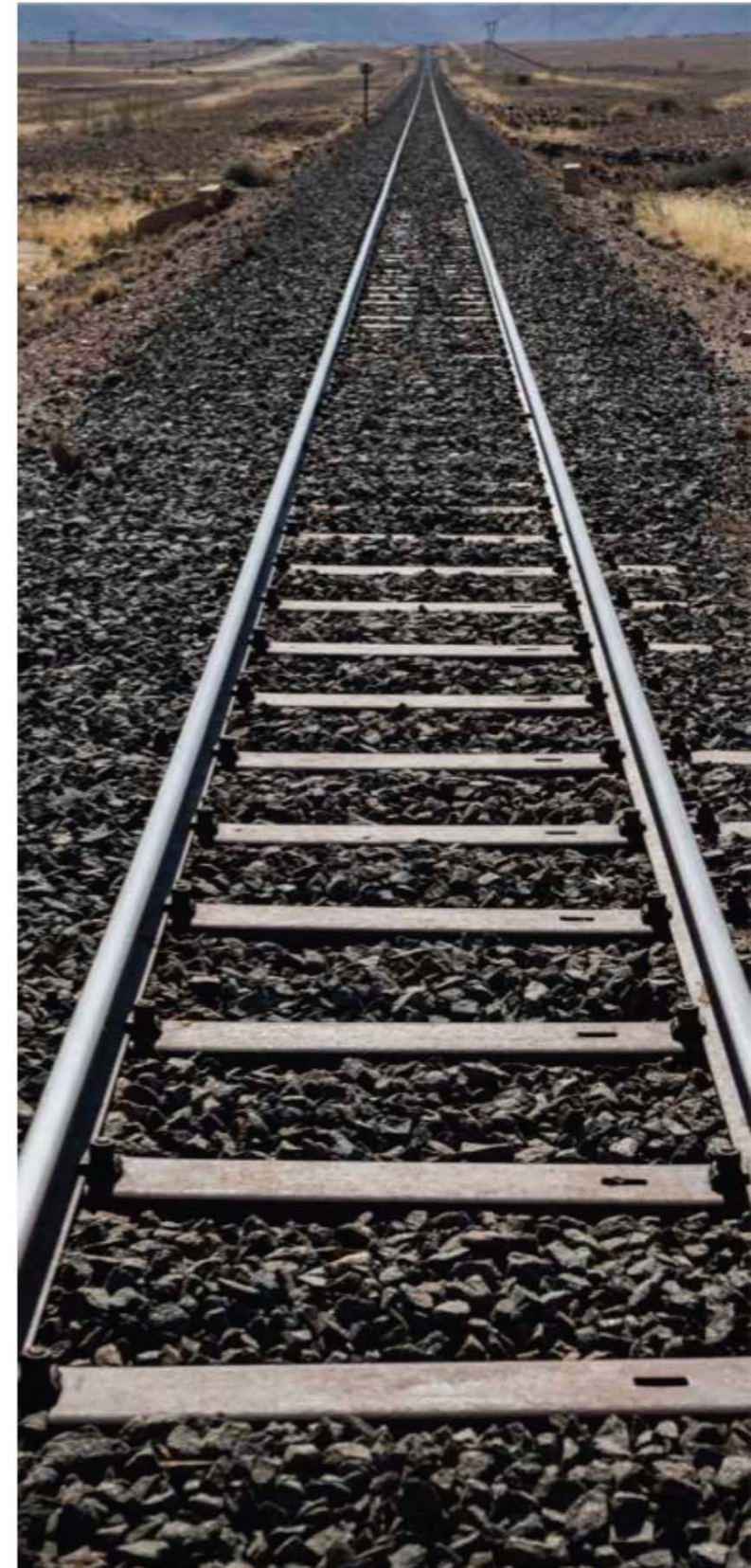
FORECAST BUSINESS GROWTH

Revised ISBP Volumes

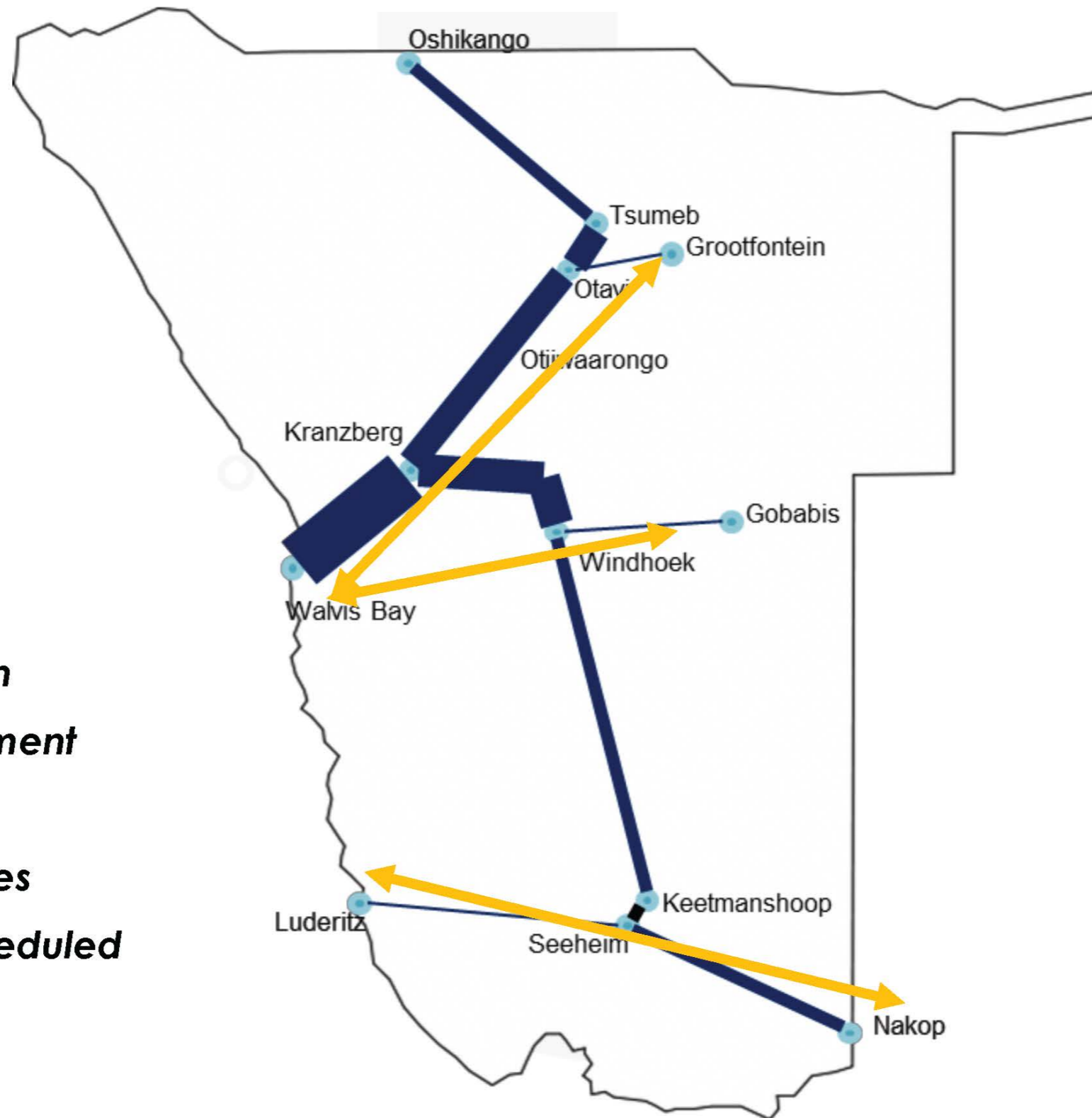


WHAT WE HAVE!

- 1. Can carry bulk cargo by rail**
 - a) 1 train =**
 - b) 30 road trucks**
- 2. GPS on locomotives**
- 3. RFID/Bar codes for wagons**
- 4. Develop control centre - visibility**



CONNECTING PORT VIA RAIL



No. of trains

1. Station to Station
2. Active engagement with clients
3. Increase volumes
4. Build block/scheduled trains



- ***Facilities – Outdoor/Indoor storage***
- ***Turnaround time***
- ***Transit time to Walvis Bay***
- ***Currently 2 services/week to Walvis Bay***
- ***Increase to 4 services/week to Walvis Bay***

- ***DRC/Zambia to Walvis Bay***
- ***Lubumbashi/Copperbelt/Lusaka to Grootfontein – by Road***
- ***Grootfontein – Walvis Bay – By Rail***
- ***Reduction in 1,400 km return leg – Improved turnaround time***
- ***Road service facilities in Grootfontein***
- ***Bulk, Breakbulk cargo***
- ***Fuel in transit facilities***



GROOTFONTEIN STATION

TRANSNAMIB'S GROOTFONTEIN CORRIDOR BUSINESS DEVELOPMENT HUB IS

THE GATEWAY TERMINAL FOR HANDLING BULK AND BREAKBULK COMMODITIES

THROUGH THE WALVIS BAY – NDOLA – LUBUMBASHI DEVELOPMENT CORRIDOR



GROOTFONTEIN STATION

SERVICES OFFERED:

- Offloading and unloading and storage of imported and exported goods.
- Packing and unpacking (stuffing and destuffing) of containerized export and imported goods.
- Container depot services.
- All the customs documentation can be done at Grootfontein instead of the Port of Walvis Bay. Importers can accomplish all the necessary documentation and take delivery of their cargo at Grootfontein as it provides a convenient interface for traffic to Zambia and the Democratic Republic of Congo.



SIDINGS

- Two Sidings
- Fuel- 8 RTC's 20x 176,000 litres
- Fuel- 6 RTC's

WAREHOUSE FACILITIES (ENCLOSED)

- 1 29 x 7m
- 1 66 x 9m

RAILWAY TRACK / MARSHALLING YARD

- 5 | 25 wagons

SUPPORTING EQUIPMENT

- 24Tons Cranes
- 12Tons Forklifts

TRUCK PORT PARKING

- 20+ Trucks

VEHICLE MAINTAINACNE WORKSHOP/FACILITY

- Office building for workshop personnel
- 15 Truck Parking spaces
- 2 x open pits for maintainance of truck tractors, as well as four areas without pits
- 1 long pit for trailer links check
- Storage room for spare parts and tyre store
- Tyre repair area
- Trailer maintainance (3 x trailer at a time)
- Albution facilities with toilets & shower
- Undercover waiting room/building for drivers



WALVIS BAY – GROOTFONTEIN	– OTJIWARONGO – OTAVI –	➤➤	631 KILOMETRES
OSHIKANGO – GROOTFONTEIN	– ONDANGWA – TSUMEB –	➤➤	308 KILOMETRES
WINDHOEK – GROOTFONTEIN	– OTJIWARONGO – OTAVI –	➤➤	468 KILOMETRES
WALVIS BAY – GROOTFONTEIN – RUNDU – KATIMA MULILO – LIVINGSTONE		➤➤	1593 KILOMETRES
WALVIS – GROOTFONTEIN – RUNDU – KATIMA MULILO – COPPERBELT PROVINCE		➤➤	2371 KILOMETRES
WALVIS BAY – GROOTFONTEIN – KATIMA MULILO – DEMOCRATIC REPUBLIC OF CONGO		➤➤	2242 KILOMETRES



1. Develop strategic partnerships:

- a) **Clients**
- b) **Railway companies;**
- c) **Logistics Companies**
- d) **Stakeholder groups**
- e) **Road Sector**

2. Link passenger to cargo trains

3. Combining core rail & property services

4. Station strategy (eg. Warehousing & Distribution)

5. Look at value added services

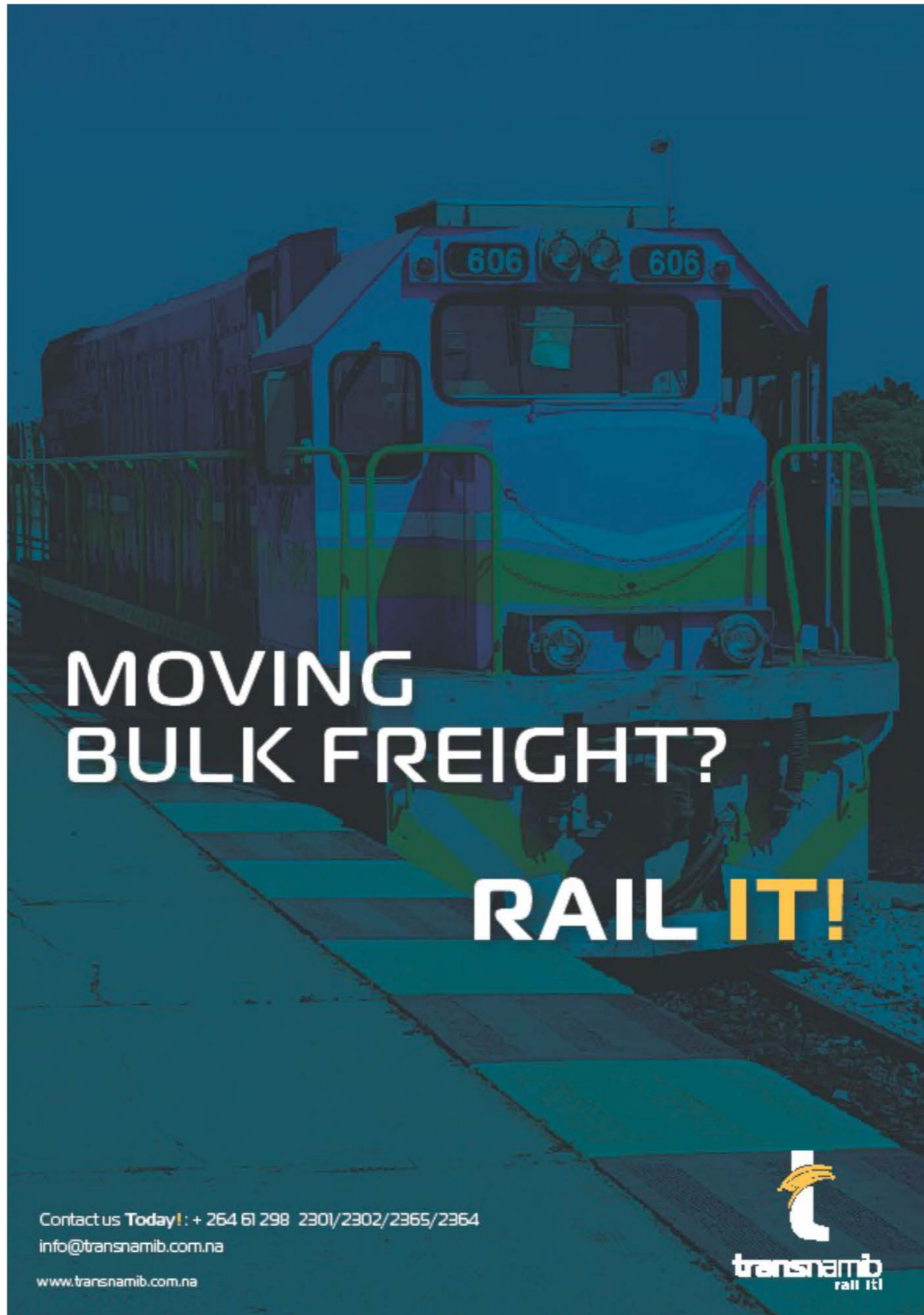
6. Explore new technology options



- 1. Build a sustainable rail operator***
 - 2. Successful Road to Rail strategy***
 - 3. Develop PPP's for commuter rail lines***
 - 4. Upgrade rail network to SADC standard***
 - 5. Develop rail line to Botswana/Zambia***
- TransNamib 5 year plan = N\$ 2.6 billion**
 - Complete upgrade of railway network = N\$ 15 billion**



THANK YOU



**MOVING
BULK FREIGHT?**

RAIL IT!

Contact us Today! : + 264 61 298 2301/2302/2365/2364
info@transnamib.com.na
www.transnamib.com.na



transnamib